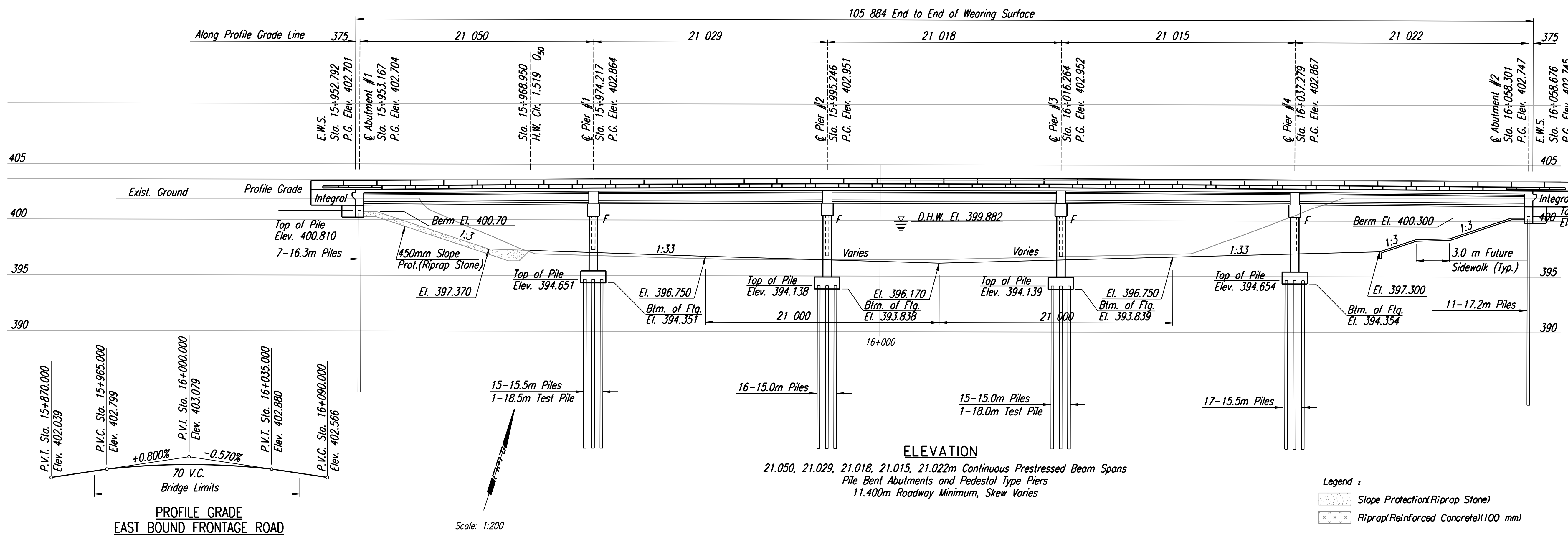


STATE	PROJECT NO.	YEAR	SHEET NO.	TOTAL SHEETS
KANSAS	54-87 K-6657-01	2002	534	1122

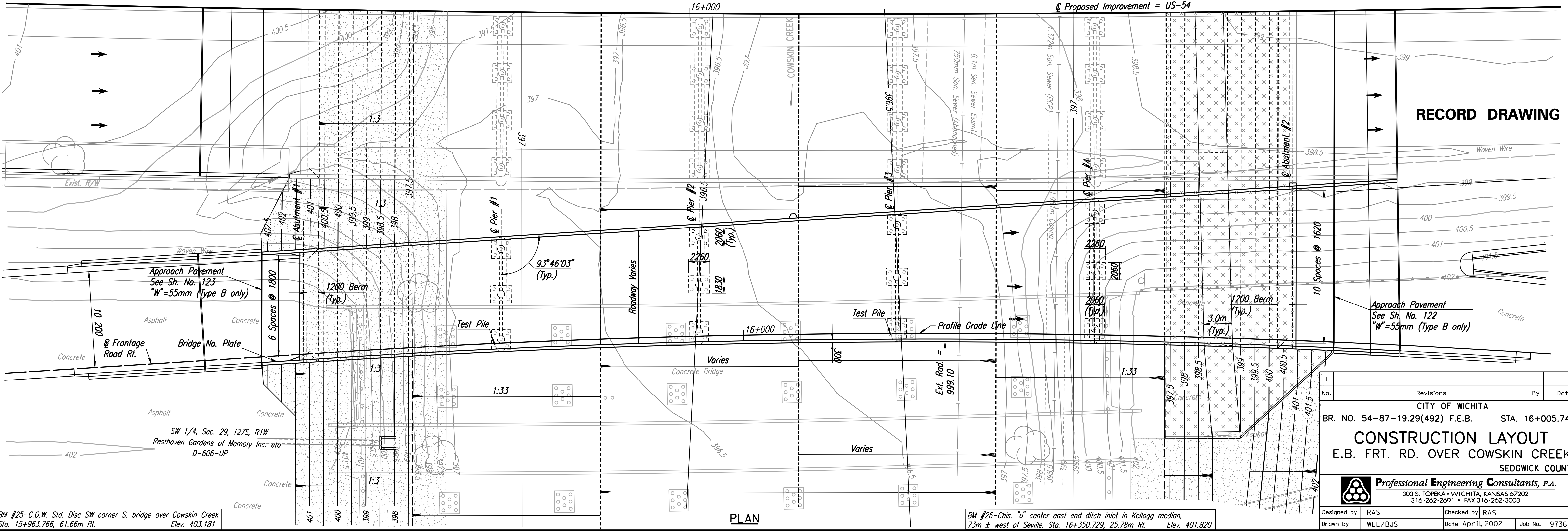


DRAINAGE DATA

Drainage Area	-----	277km ²
Design Frequency	-----	50 years
Design Discharge (Q50)	-----	399 m ³ /s
Design High Water Elevation	-----	399.882
Design Backwater	-----	0.183m
Design Backwater Elevation	-----	400.065
Overlapping Elevation	Sta. 15+847.778	---401.950
Overlapping Discharge	-----	1161 m ³ /s
Overlapping Frequency	-----	>500 years
Discharge at Q100	-----	493 m ³ /s
Backwater at Q100	-----	0.244m
Backwater Elevation at Q100	-----	400.321
Historic High Water Elevation	-----	400.964
Ordinary High Water Elevation	-----	398.068
Total Waterway Provided	-----	385.5 Sq. M
Design Waterway Provided	-----	275.3 Sq. M

Note:
The thermal movement at the Abutments is +/- 13mm.

**PROFILE GRADE
EAST BOUND FRONTAGE ROAD**



RECORD DRAWING

No.	Revisions	By	Date

CITY OF WICHITA
BR. NO. 54-87-19.29(492) F.E.B. STA. 16+005.740

CONSTRUCTION LAYOUT
E.B. FRT. RD. OVER COWSKIN CREEK
SEDGWICK COUNTY

Professional Engineering Consultants, P.A.
303 S. TOPEKA • WICHITA, KANSAS 67202
316-262-2691 • FAX 316-262-3003

Designed by RAS	Checked by RAS
Drawn by WLL/BJ/S	Date April, 2002 Job No. 97362

DSNR: RAS OPER: BUS SCALE: 1:200
 i:/1997/97362/As-Builts/dgn's/Vol_3/534-FRTRDEB.dgn Last Rev: 9-5-07 By: gdr

BM #25-C.O.W. Std. Disc SW corner S. bridge over Cowskin Creek
Sta. 15+963.766, 61.66m Rt. Elev. 403.181

BM #26-Chis. "d" center east end ditch inlet in Kellogg median,
73m ± west of Seville. Sta. 16+350.729, 25.78m Rt. Elev. 401.820