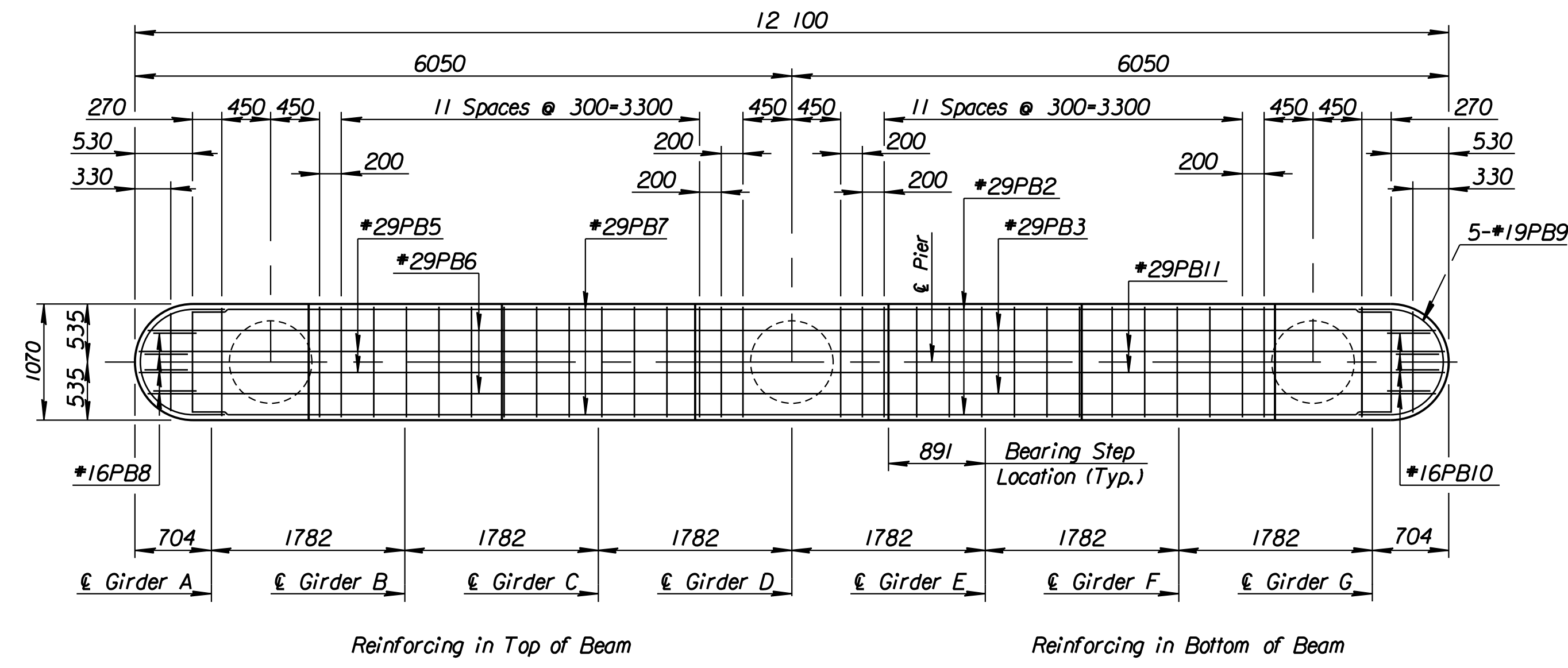


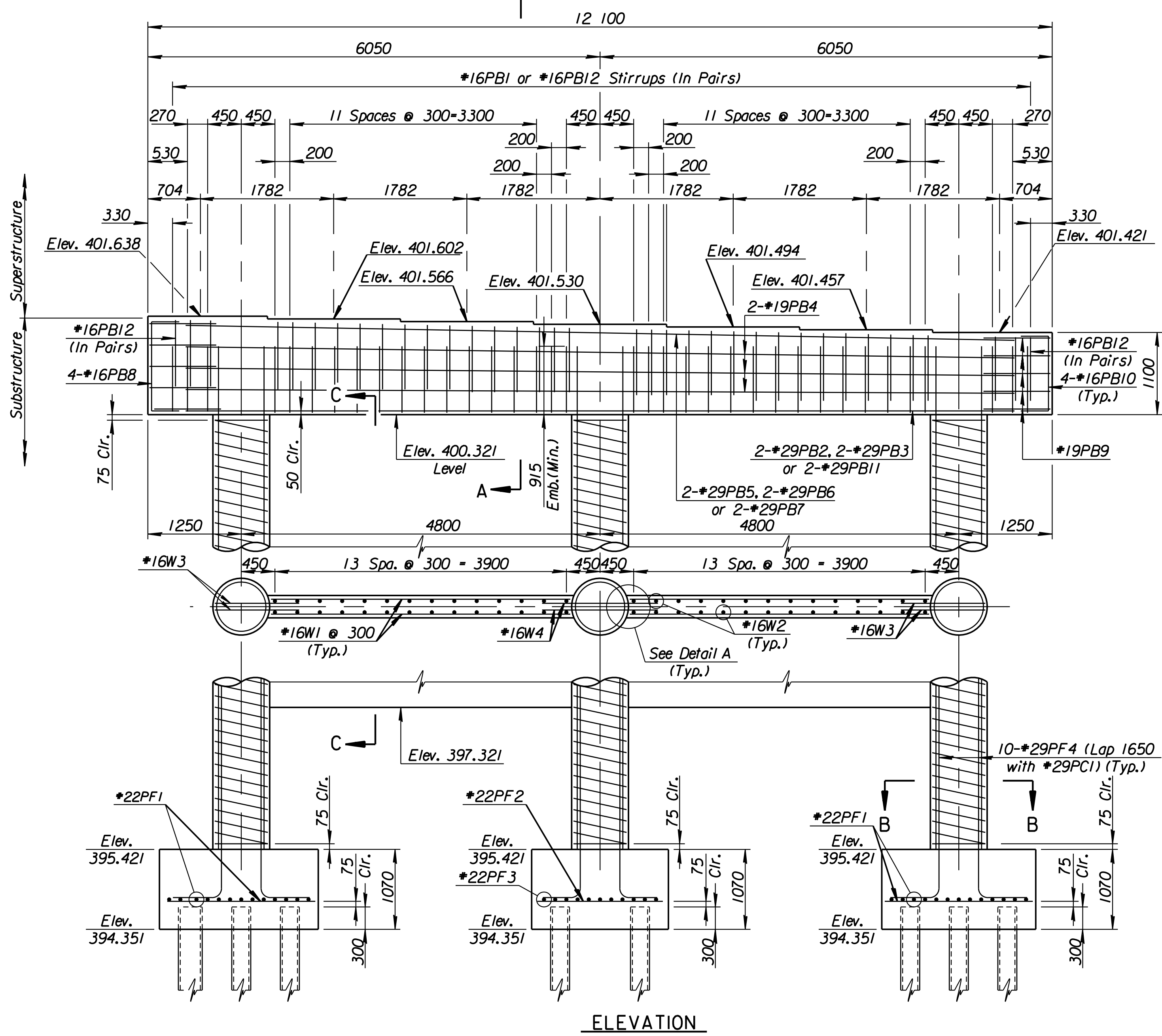
STATE	PROJECT NO.	YEAR	SHEET NO.	TOTAL SHEETS
KANSAS	54-87 K-6657-01	2002	539	1122



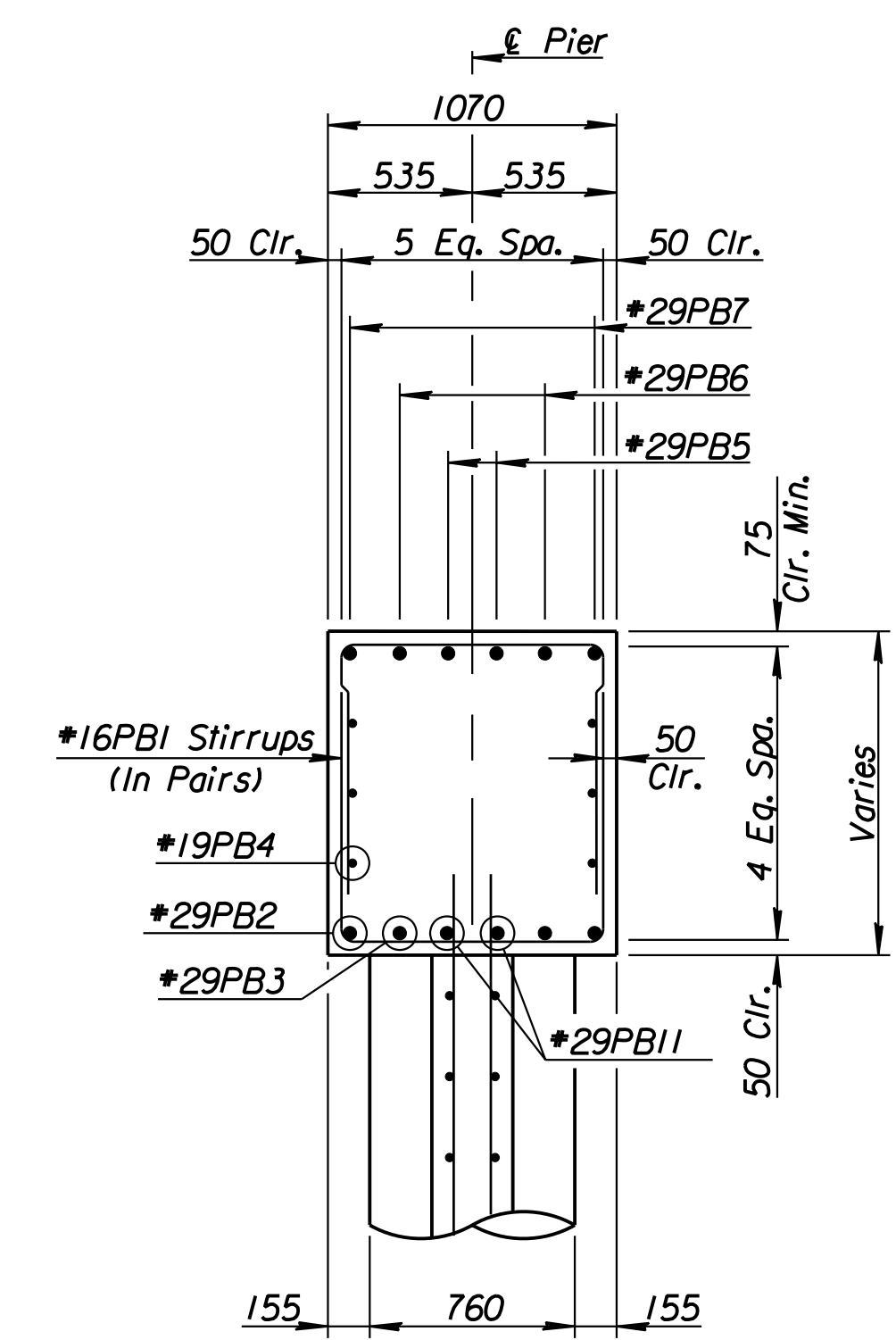
Reinforcing in Top of Beam

Reinforcing in Bottom of Beam

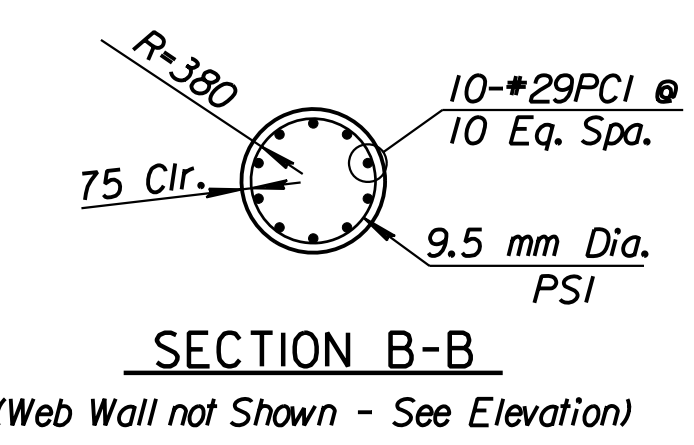
PLAN



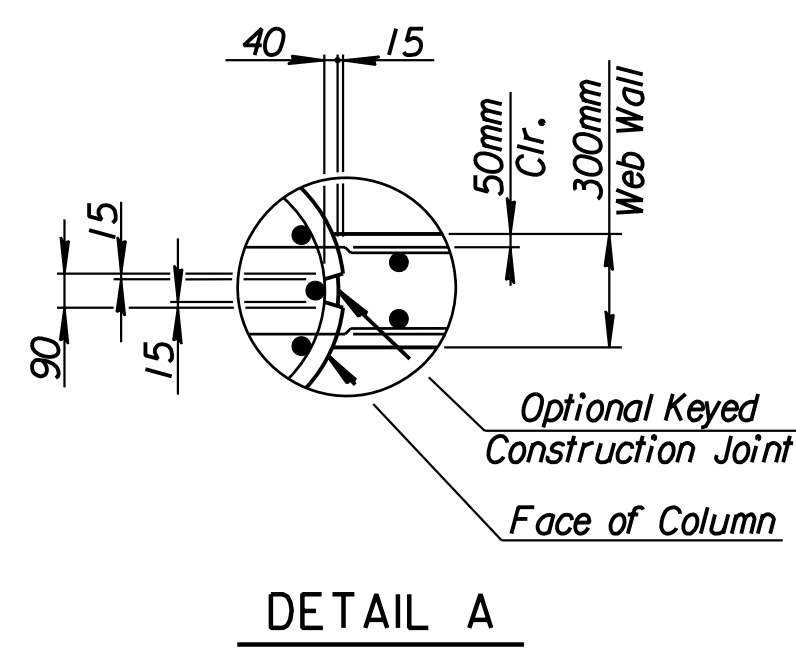
ELEVATION



SECTION A-A

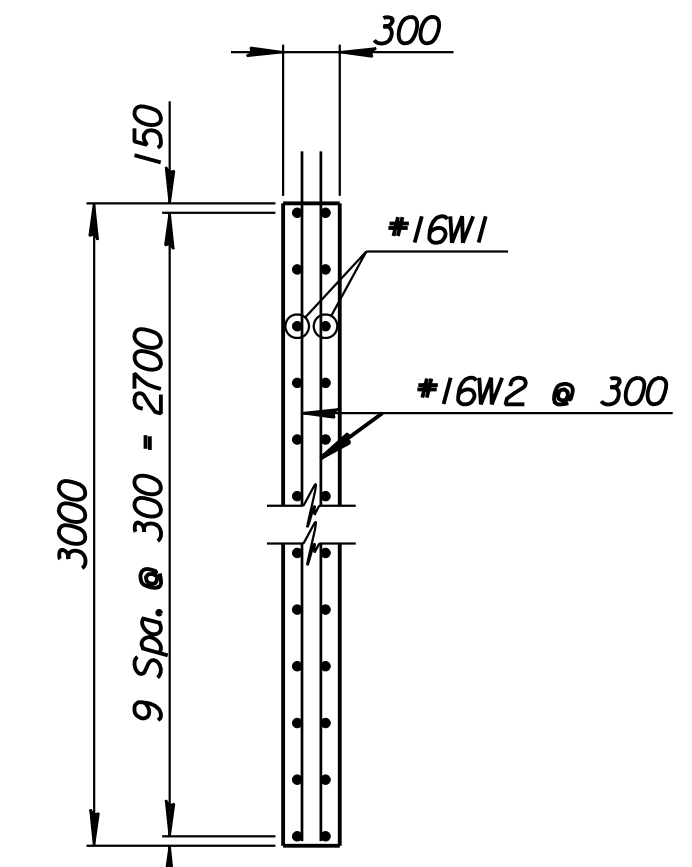


SECTION B-B
(Web Wall not Shown - See Elevation)

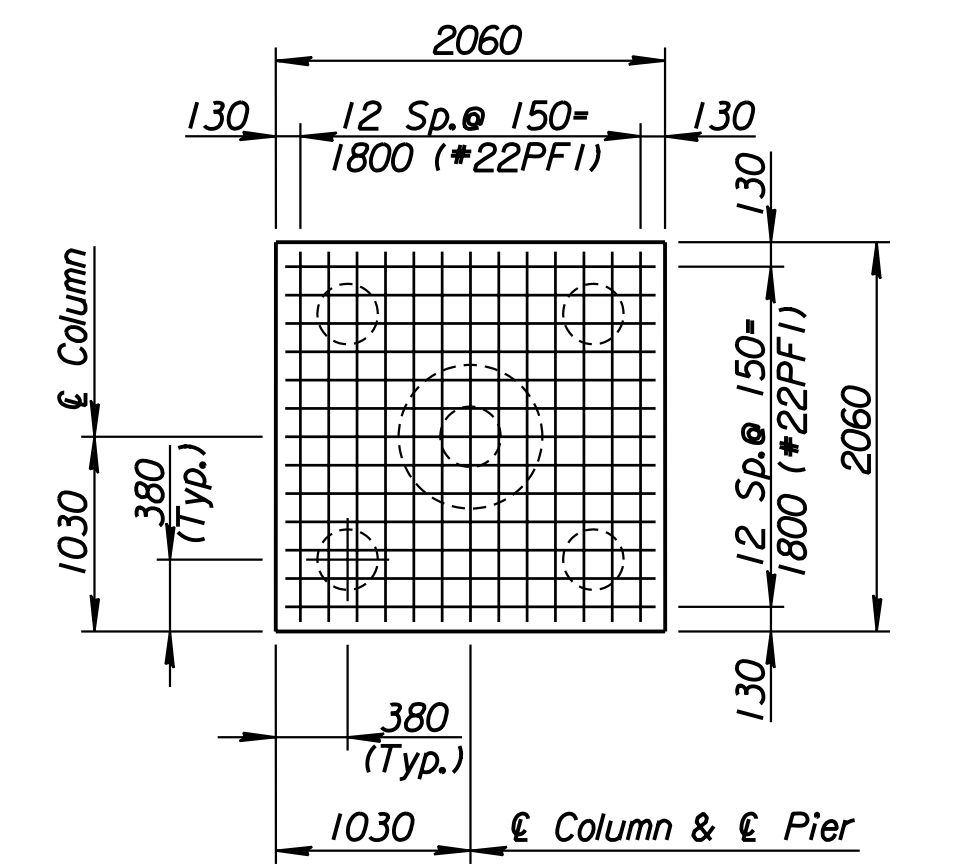


DETAIL A

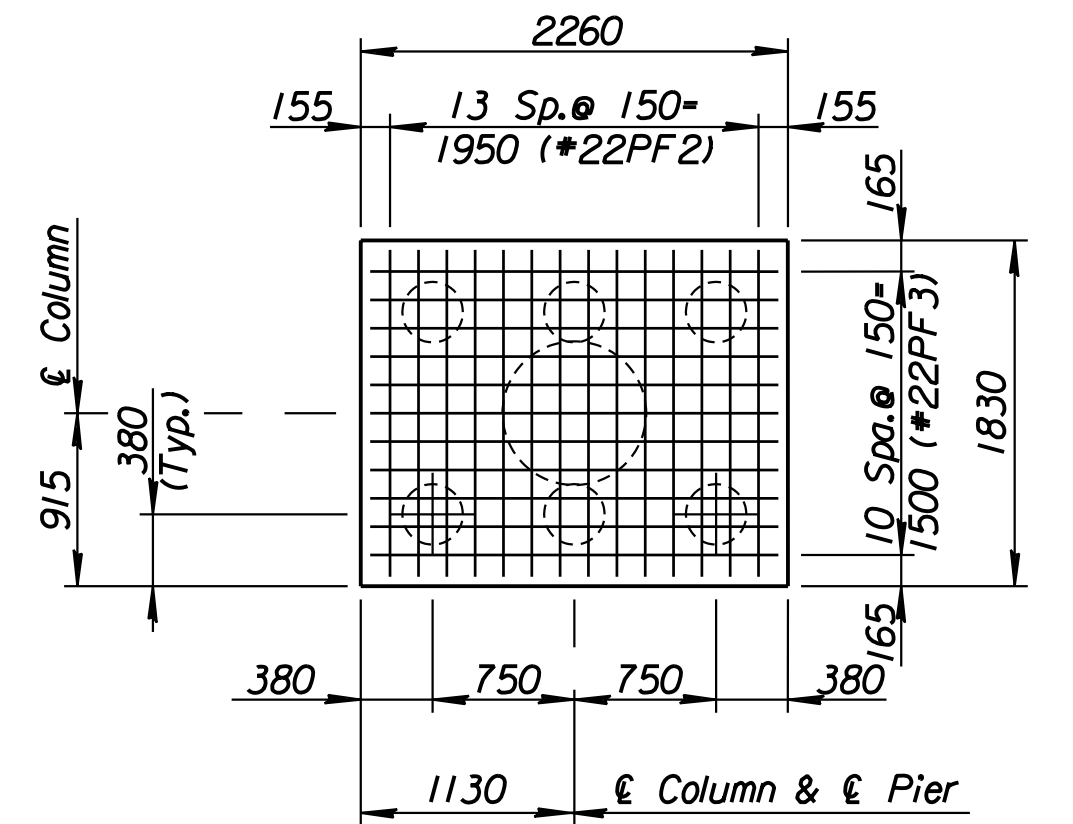
Note: Either cast the columns and pier web monolithically or cast the columns separately using keyed joint as shown in Detail A. If the columns are cast separately, use threaded deformed bars in lieu of W3 & W4 dowel bars. Bar diameter and embedment length into the web wall shall be as designated. The inserts shall develop the full yield strength of the bars. No change in compensation is allowed with the use of inserts. Coil inserts are not allowed.



SECTION C-C



FOOTING PLAN
(Exterior)



FOOTING PLAN
(Interior)

Longitudinal Direction of Bridge

	Pier Pile Loading (kN)	
	Computed	Allowable
Group I Loading	419	440
Group III Loading	503	550
Group IV Loading	542	550
Group V Loading	471	616

Note: See Diaphragm Detail Sheet for Number and Location of #19PB36 bars.

Revisions				By	Date
CITY OF WICHITA					
BR. NO. 54-87-19-29(492)(F.E.B.)			STA. 16+005.740		
PIER NO. 1 DETAILS					
EAST BOUND FRONTAGE ROAD OVER COWSKIN CREEK SEDGWICK COUNTY					
Professional Engineering Consultants, P.A.					
303 S. TOPEKA - WICHITA, KANSAS 67202 316-262-2691 • FAX 316-262-3003					
Designed by	R.W.A.	Checked by	R.A.S.		
Drawn by	GDR	Date	Apr 11, 2002	Job No.	97362

RECORD DRAWING

DSMR: RWA OPER: gdr SCALE: 25
12/19/97/197362/As-Built/dgnr/vol_3/151 539-pier1.dgn Last Rev. 9-5-07 By: gdr