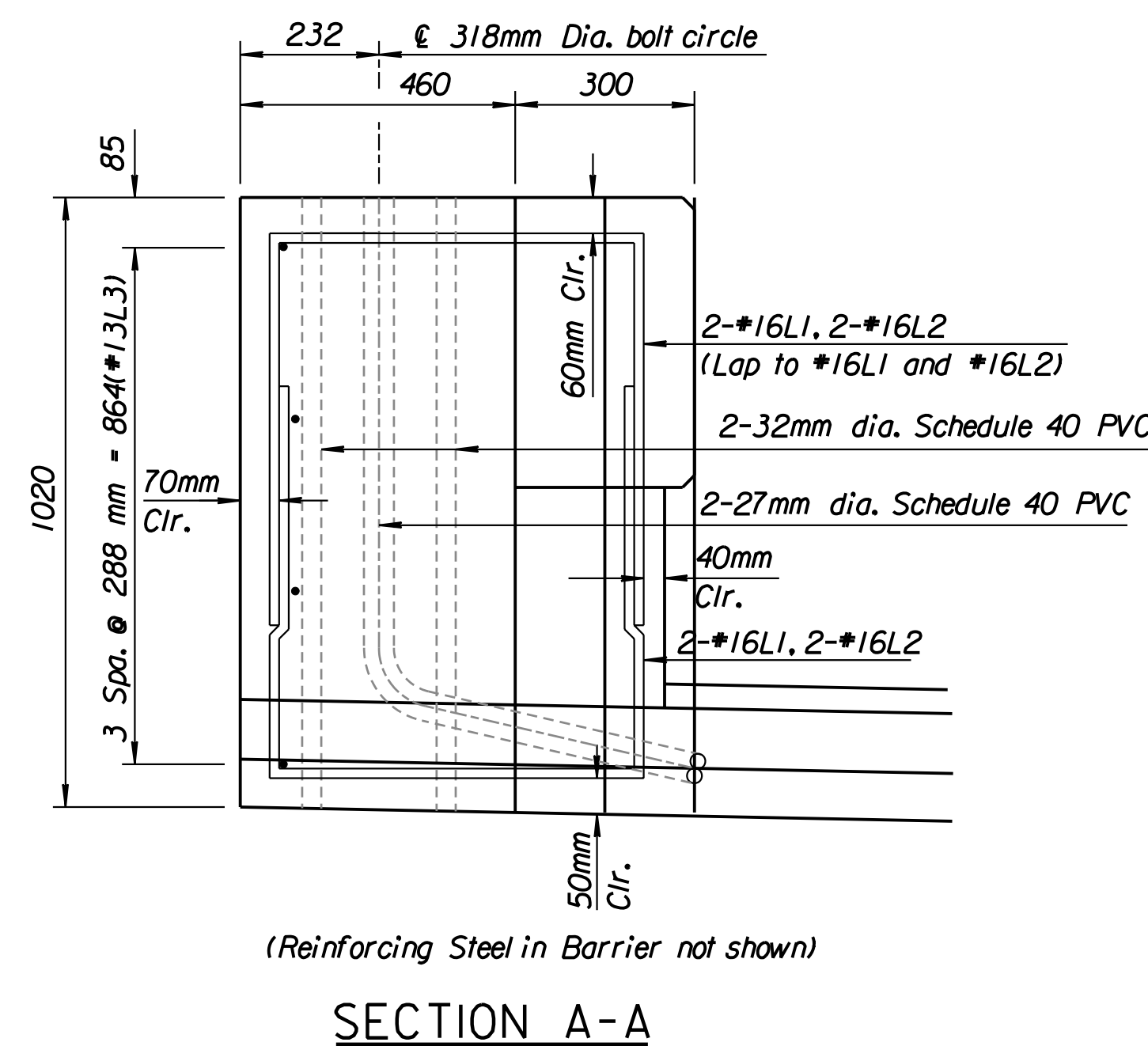
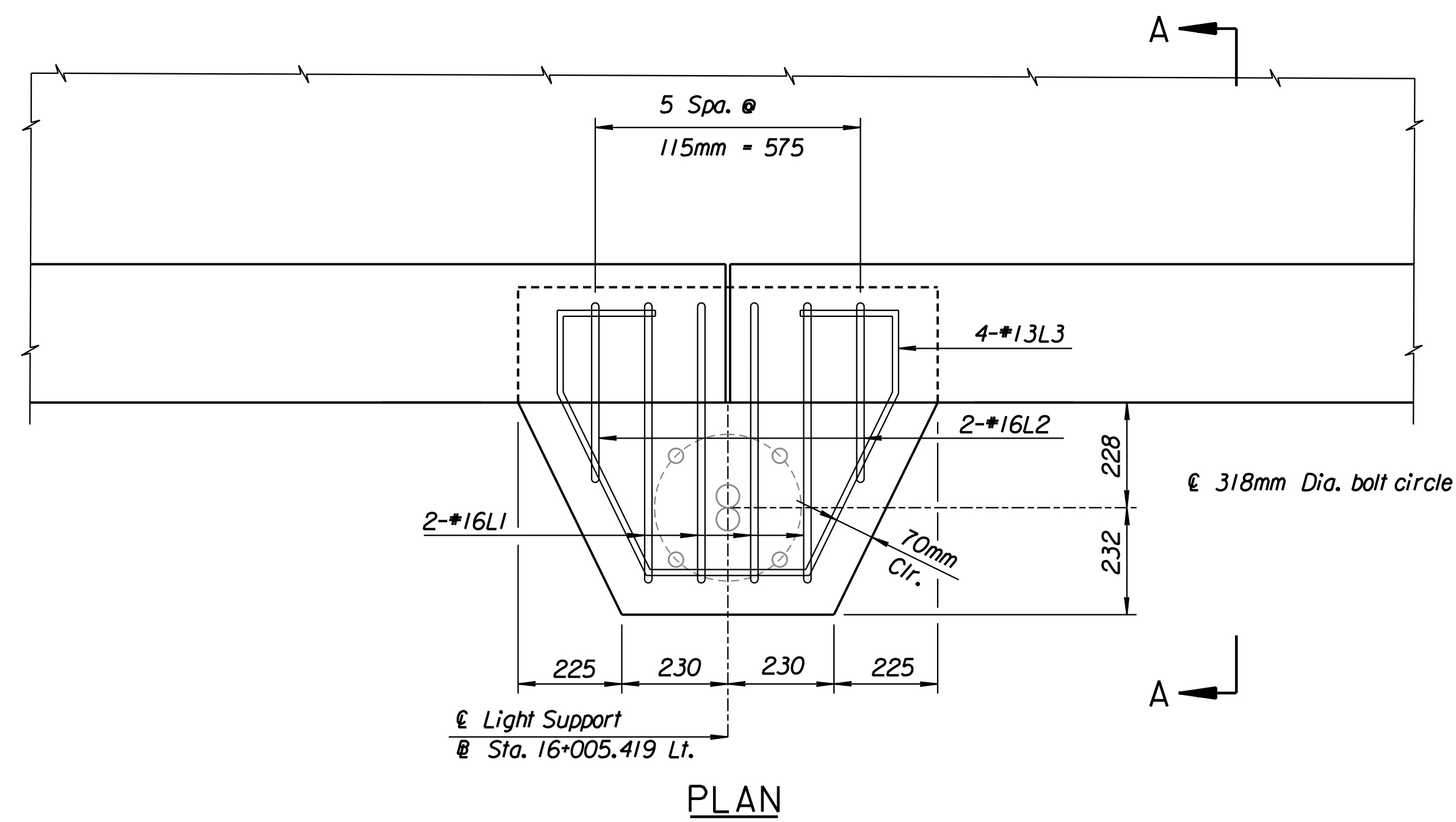



|        |                 |      |           |              |
|--------|-----------------|------|-----------|--------------|
| STATE  | PROJECT NO.     | YEAR | SHEET NO. | TOTAL SHEETS |
| KANSAS | 54-87 K-6657-01 | 2002 | 560       | 1122         |



Note: 1-27mm dia. PVC for conductor use  
 1-27mm dia. PVC for ground use  
 See Lighting Details for location.

Drawn by: ras  
 Plotted by: svb 3-27-2002  
 It:1997:97:362/As-Built/dgn:s/Vol...3/Sh 560-lightfbdgn Last Rev: 9-5-07 By: gdr

**RECORD DRAWING**

|   |           |            |             |
|---|-----------|------------|-------------|
| 1   |           |            |             |
| No.   | Revisions | By         | Date        |
| CITY OF WICHITA<br>BR. NO. 54-87-19.29 (492) F.E.B. STA. 16+005.740   |           |            |             |
| <b>MISCELLANEOUS RAIL DETAIL</b><br>KELLOGG (US-54) OVER COWSKIN CREEK<br>SEDGWICK COUNTY   |           |            |             |
|  <b>Professional Engineering Consultants, P.A.</b><br>303 S. TOPEKA • WICHITA, KANSAS 67202<br>316-262-2691 • FAX 316-262-3003 |           |            |             |
| Designed by   | RAS       | Checked by | RAS         |
| Drawn by  | BJS       | Date       | April, 2002 |
|   |           | Job No.    | 97362       |