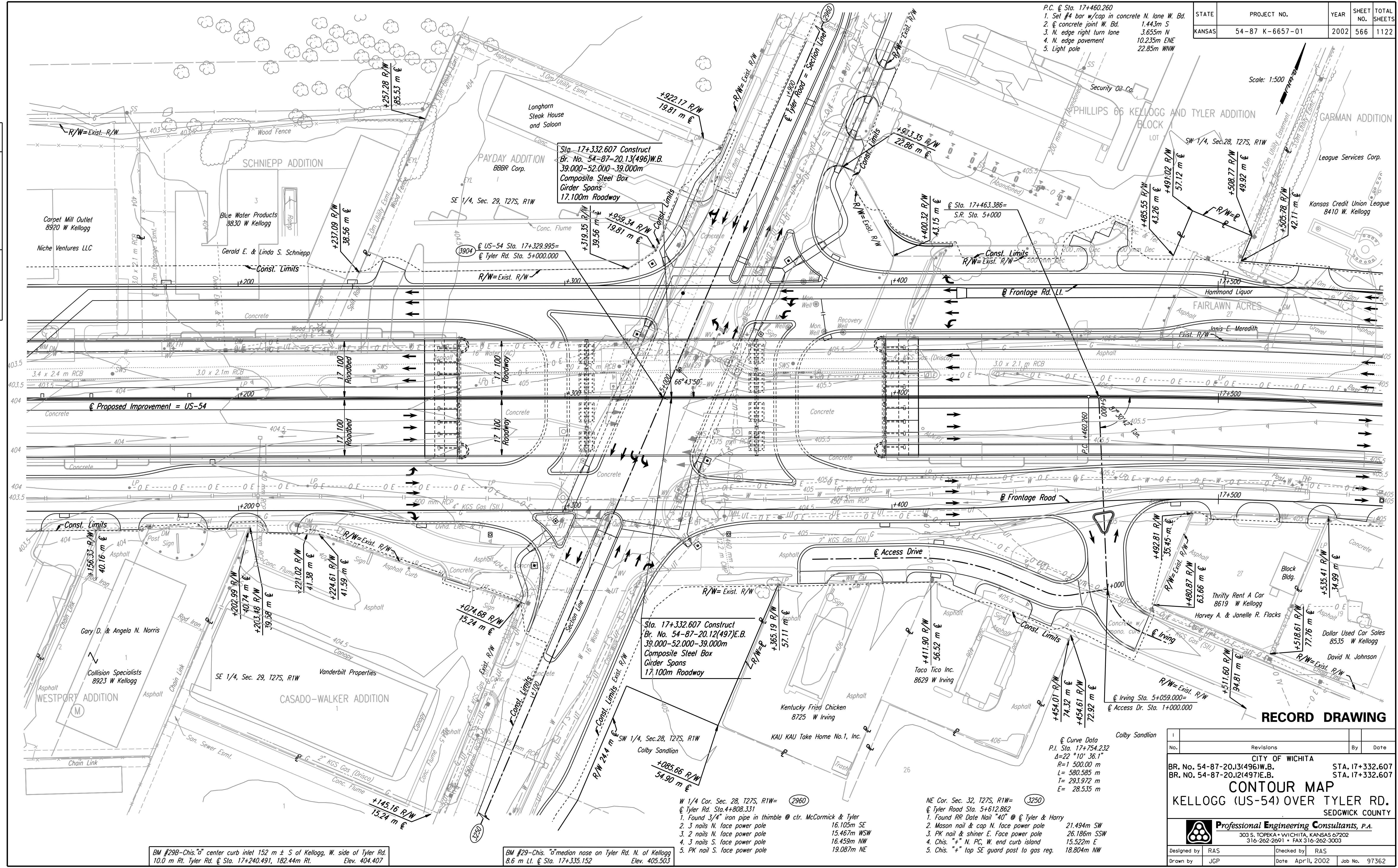


STATE	PROJECT NO.	YEAR	SHEET NO.	TOTAL SHEETS
KANSAS	54-87 K-6657-01	2002	566	1122

- P.C. @ Sta. 17+460.260
 1. Set #4 bar w/cap in concrete N. lane W. Bd. 1.443m S
 2. Concrete joint W. Bd. 3.635m N
 3. N. edge right turn lane 10.235m ENE
 4. N. edge pavement 22.85m WNW
 5. Light pole

Scale: 1:500

DATE	
BY	
REFERENCES NOTED	
REFERENCES CHECKED	



DSNR: RAS OPER: JGP SCALE: 1:500
 i:/1997/97362/As-Built/dgn s/Vol_3/Sh_566-TYLERCON.dgn Last Rev: 9-5-07 By: gdr

BM #29B-Chis. "d" center curb inlet 152 m ± S of Kellogg, W. side of Tyler Rd. 10.0 m Rt. Tyler Rd. @ Sta. 17+240.491, 182.44m Rt. Elev. 404.407

BM #29-Chis. "d" median nose on Tyler Rd. N. of Kellogg 8.6 m Lt. @ Sta. 17+335.152 Elev. 405.503

Sta. 17+332.607 Construct
 Br. No. 54-87-20.12(497)E.B.
 39.000-52.000-39.000m
 Composite Steel Box
 Girder Spans
 17.100m Roadway

Sta. 17+332.607 Construct
 Br. No. 54-87-20.13(496)W.B.
 39.000-52.000-39.000m
 Composite Steel Box
 Girder Spans
 17.100m Roadway

Curve Data
 P.I. Sta. 17+754.232
 Δ=22°10'36.1"
 R=1500.00 m
 L=580.585 m
 T=293.972 m
 E=28.535 m

- NE Cor. Sec. 32, T27S, R1W= (3250)
 @ Tyler Road Sta. 5+612.862
- Found RR Date Nail "40" @ Tyler & Harry
 - Mason nail & cap N. face power pole 21.494m SW
 - PK nail & shiner E. Face power pole 26.186m SSW
 - Chis. "+" N. PC, W. end curb island 15.522m E
 - Chis. "+" top SE guard post to gas reg. 18.804m NW

RECORD DRAWING

No.	Revisions	By	Date

CITY OF WICHITA
 BR. No. 54-87-20.13(496)W.B. STA. 17+332.607
 BR. No. 54-87-20.12(497)E.B. STA. 17+332.607

CONTOUR MAP
KELLOGG (US-54) OVER TYLER RD.
 SEDGWICK COUNTY

Professional Engineering Consultants, P.A.
 303 S. TOPEKA • WICHITA, KANSAS 67202
 316-262-2691 • FAX 316-262-3003

Designed by RAS checked by RAS
 Drawn by JGP Date April, 2002 Job No. 97362