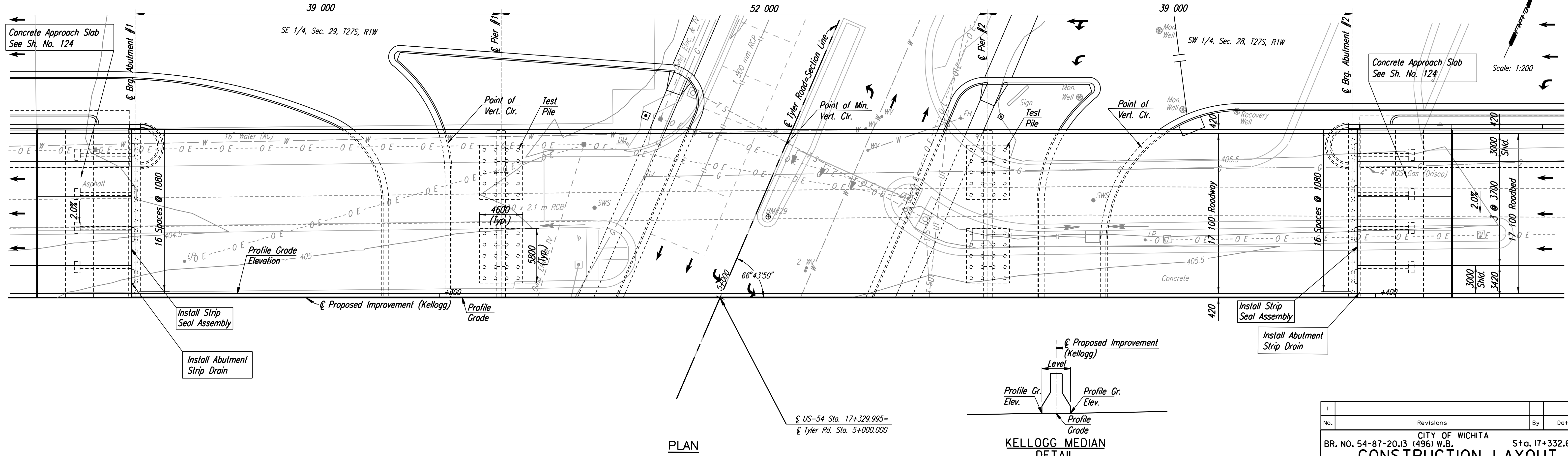
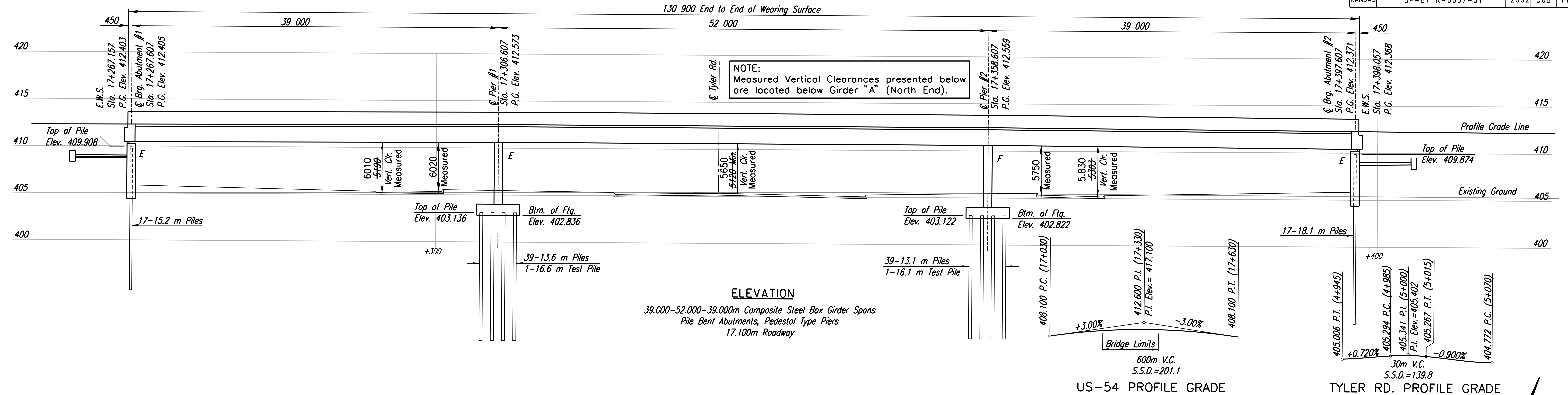


STATE	PROJECT NO.	YEAR	SHEET NO.	TOTAL SHEETS
KANSAS	54-87 K-6657-01	2002	568	1122

DATE	
BY	
REFERENCES NOTED	
REFERENCES CHECKED	



BM #29B-Chis. "a" center curb inlet 152 m ± S of Kellogg, W. side of Tyler Rd. 10.0 m Rt. Tyler Rd. Sta. 5+202.9 Elev. 404.407

BM #29-Chis. "a" median nose on Tyler Rd. N. of Kellogg 8.6 m Lt. @ Sta. 17+335.1 Elev. 405.503

Note:  
The thermal movement at Abutment #1 and Abutment #2 is +/- 32mm.

**RECORD DRAWING**

No.	Revisions	By	Date

CITY OF WICHITA  
BR. NO. 54-87-20,13 (496) W.B. S+a. 17+332.607  
**CONSTRUCTION LAYOUT**  
KELLOGG (US54)  
OVER TYLER RD.,  
SEDGWICK COUNTY

**Professional Engineering Consultants, P.A.**  
303 S. TOPEKA • WICHITA, KANSAS 67202  
316-262-2691 • FAX 316-262-3003

Designed by RAS Checked by RAS  
Drawn by JGP Date April, 2002 Job No. 97362

DSNR: RAS OPER: JGP SCALE: 1:200  
 i:/1997/97362/As-Builts/dgn s/VoL\_3/Sh 568-TYLA\WBD.dgn Last Rev: 9-6-07 By: gdr