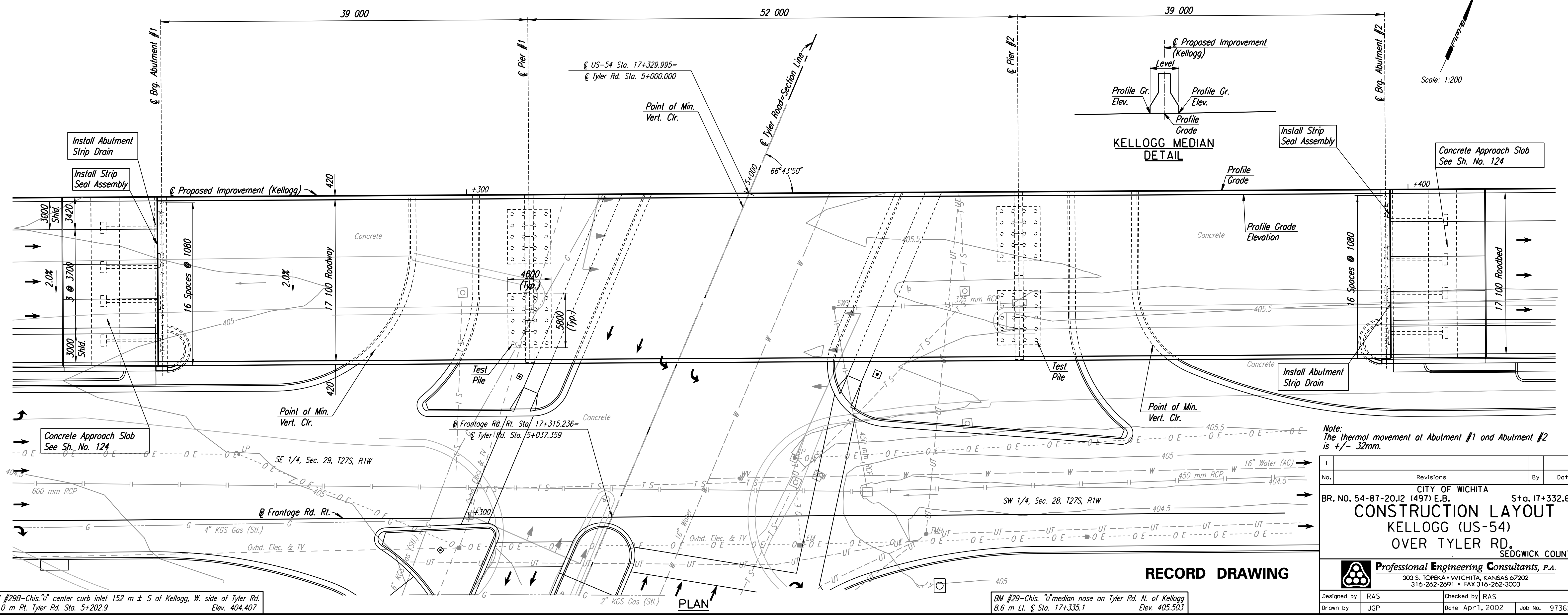
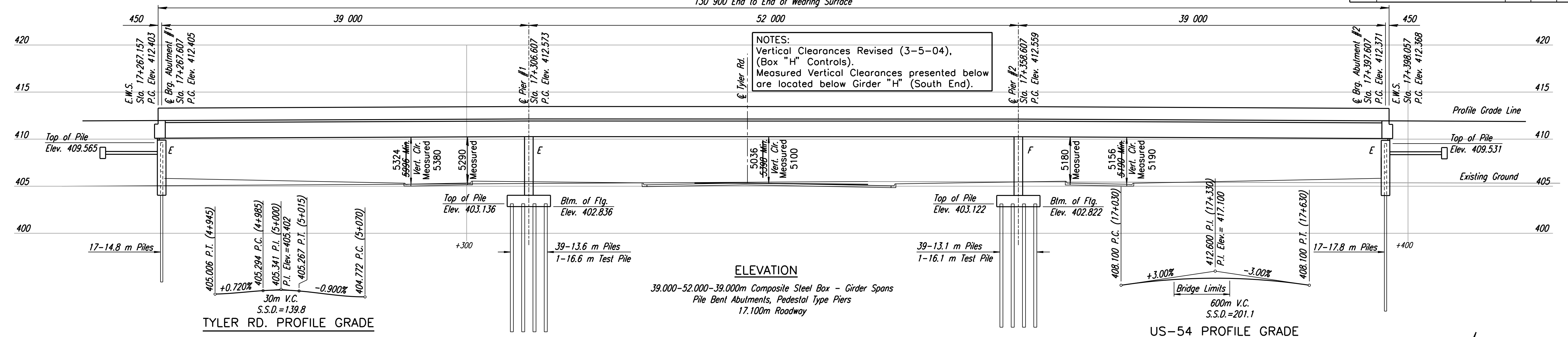


130 900 End to End of Wearing Surface

DATE	
BY	
REFERENCES NOTED	
REFERENCES CHECKED	



DSWR: RAS OPER: JGP SCALE: 1:200  
 i:/1997/97362/As-Built/dgn's/Vol\_3/Sh\_569-TYLAYEBD.dgn Last Rev: 9-6-07 By: gdr

**Note:**  
The thermal movement at Abutment #1 and Abutment #2 is +/- 32mm.

No.	Revisions	By	Date

CITY OF WICHITA  
BR. NO. 54-87-20J2 (497) E.B. Sta. 17+332.607

**CONSTRUCTION LAYOUT**  
**KELLOGG (US-54)**  
**OVER TYLER RD.**  
SEDGWICK COUNTY

**Professional Engineering Consultants, P.A.**  
303 S. TOPEKA • WICHITA, KANSAS 67202  
316-262-2691 • FAX 316-262-3003

Designed by	RAS	Checked by	RAS
Drawn by	JGP	Date	April, 2002
		Job No.	97362

BM #298-Chis. "a" center curb inlet 152 m ± S of Kellogg, W. side of Tyler Rd. 10.0 m Rt. Tyler Rd. Sta. 5+202.9 Elev. 404.407

BM #29-Chis. "a" median nose on Tyler Rd. N. of Kellogg 8.6 m Lt. @ Sta. 17+335.1 Elev. 405.503