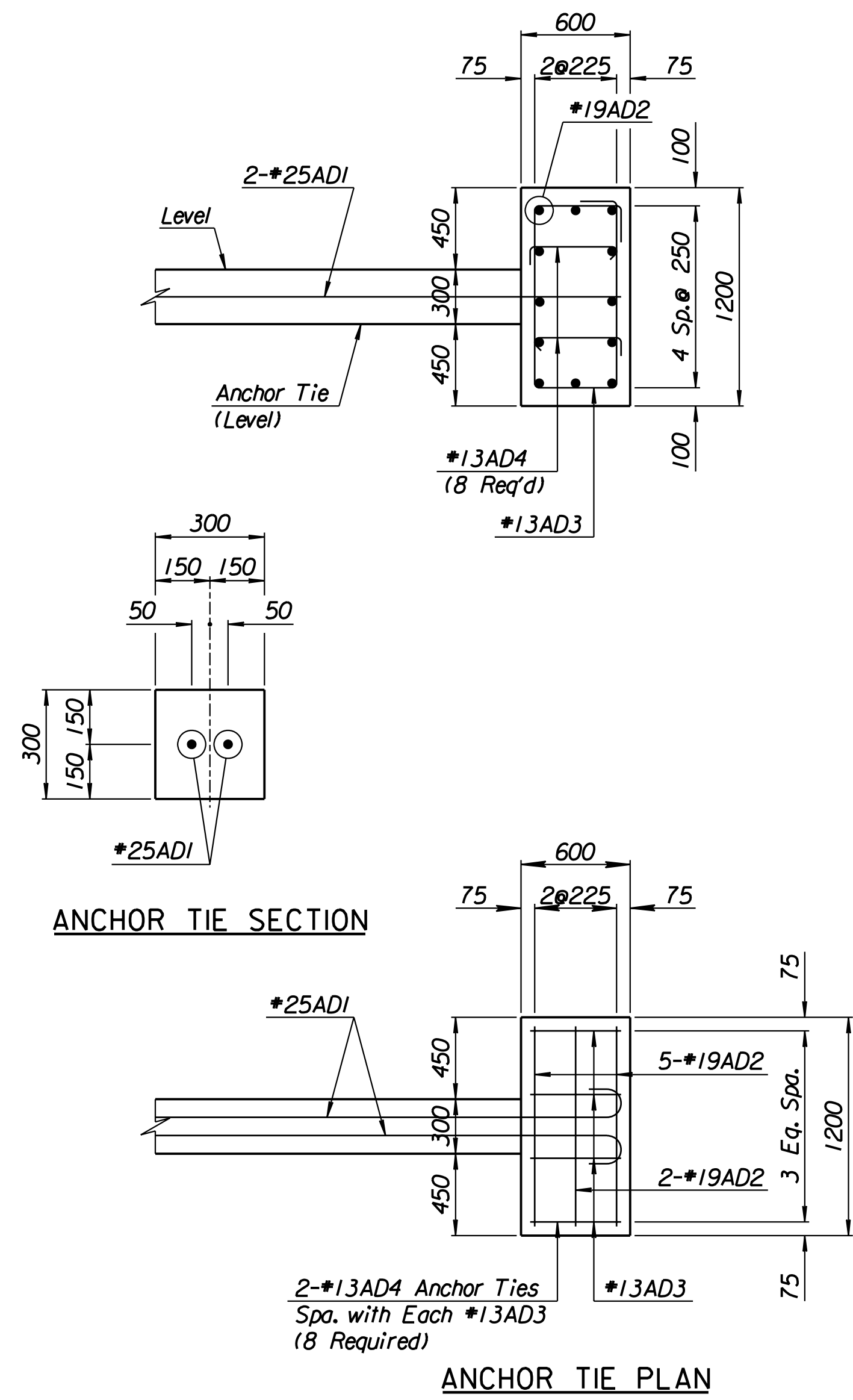
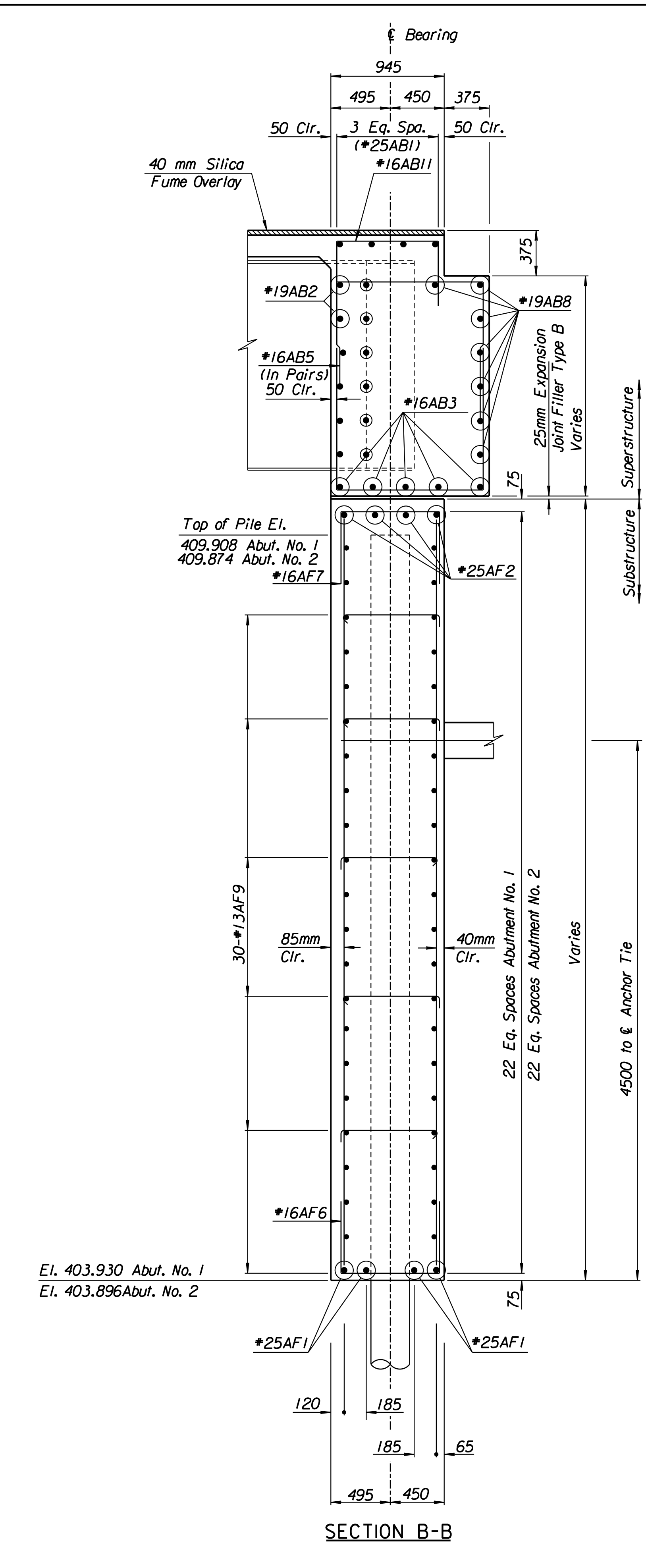
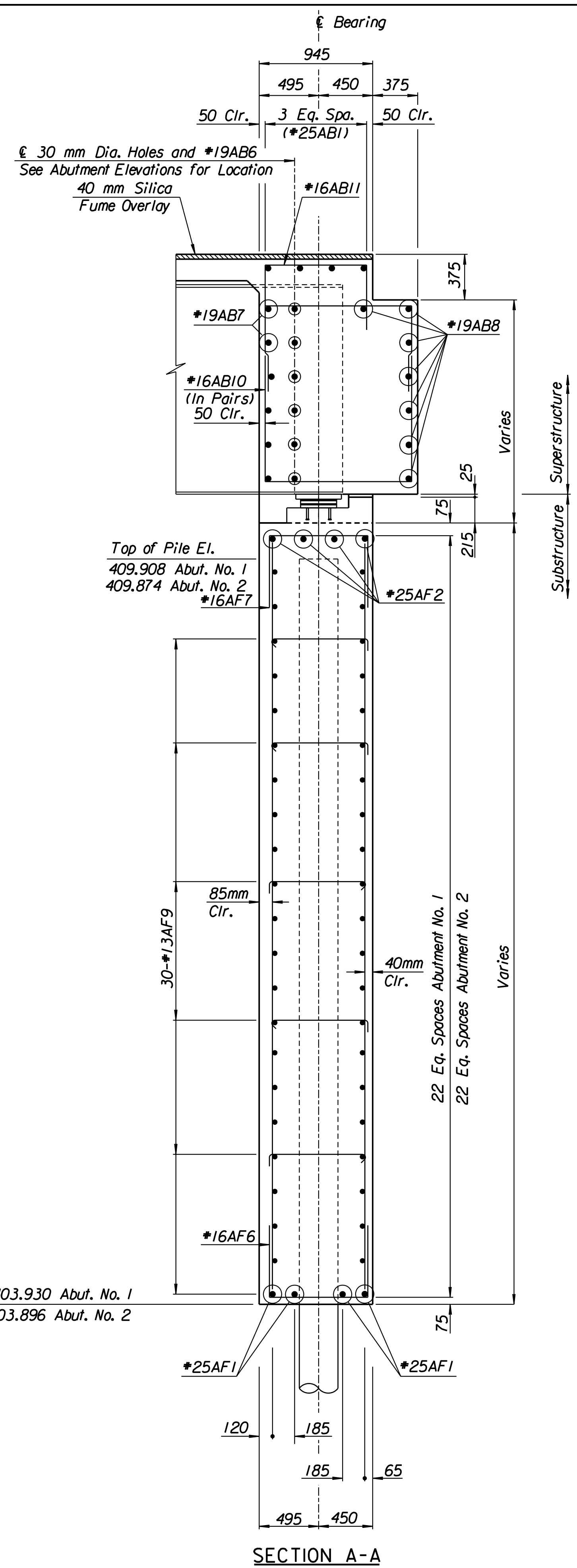


| STATE | PROJECT NO. | YEAR | SHEET NO. | TOTAL SHEETS |
|--------|-----------------|------|-----------|--------------|
| KANSAS | 54-87 K-6657-01 | 2002 | 574 | 1122 |



RECORD DRAWING

Scale 25
Drawn By: ras
Plotted By: gdr
i:/1997/97362/As-Builts/dgn's/Vol_3/Sh 574-ABUT1WB.dgn Last Rev: 9-6-07 By: gdr

| | | | |
|--|-----------|-----------------|-------------|
| No. | Revisions | By | Date |
| CITY OF WICHITA | | | |
| BR. NO. 54-87-20.13(496) W.B. | | STA. 17+332.607 | |
| KELLOGG OVER TYLER ROAD ABUTMENT SECTIONS | | | |
| SEDGWICK COUNTY | | | |
| Professional Engineering Consultants, P.A. 303 S. TOPEKA • WICHITA, KANSAS 67202 316-262-2691 • FAX 316-262-3003 | | | |
| Designed by | RAS | Checked by | RAS |
| Drawn by | RAS | Date | April, 2002 |
| | | Job No. | 97362 |