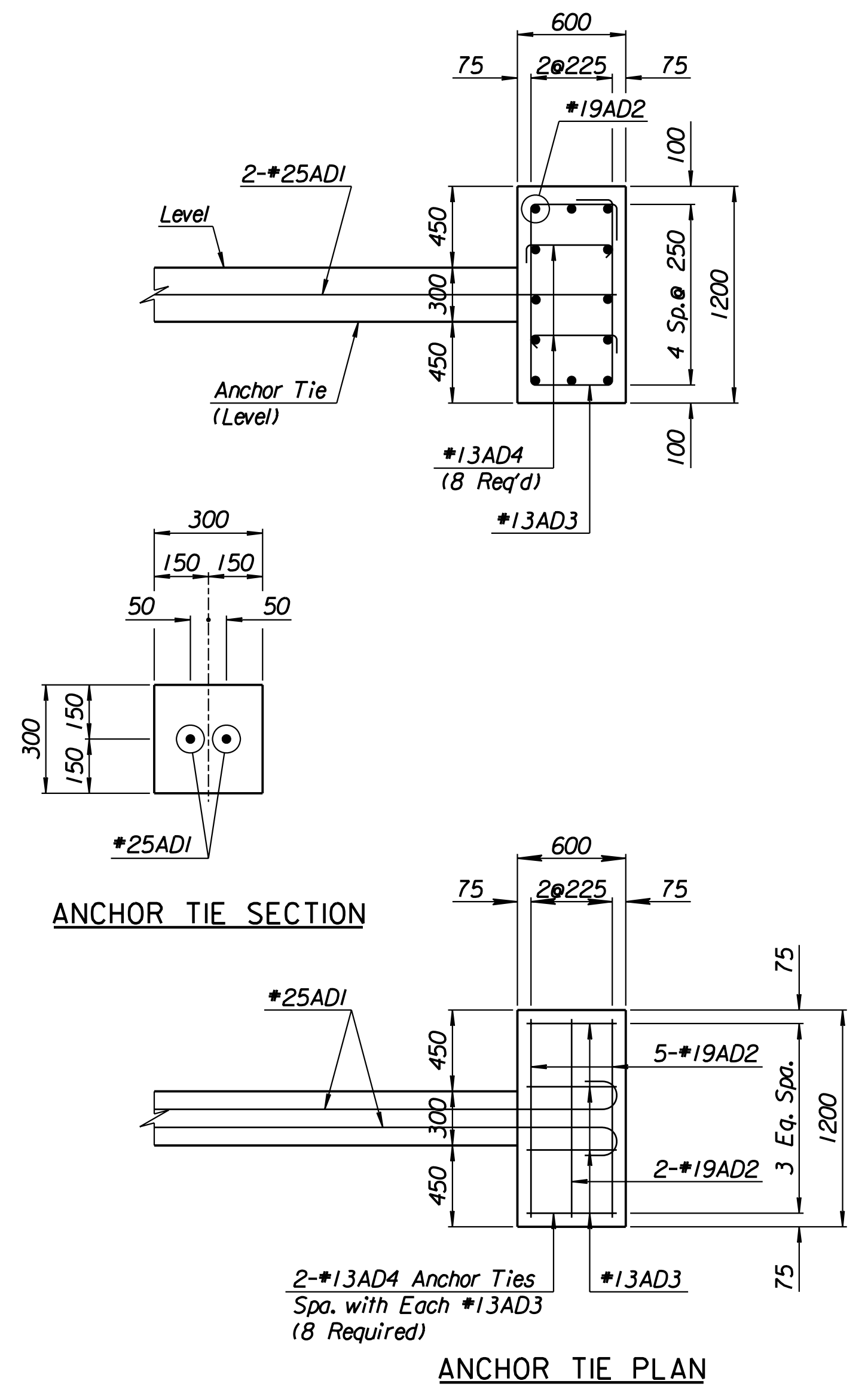
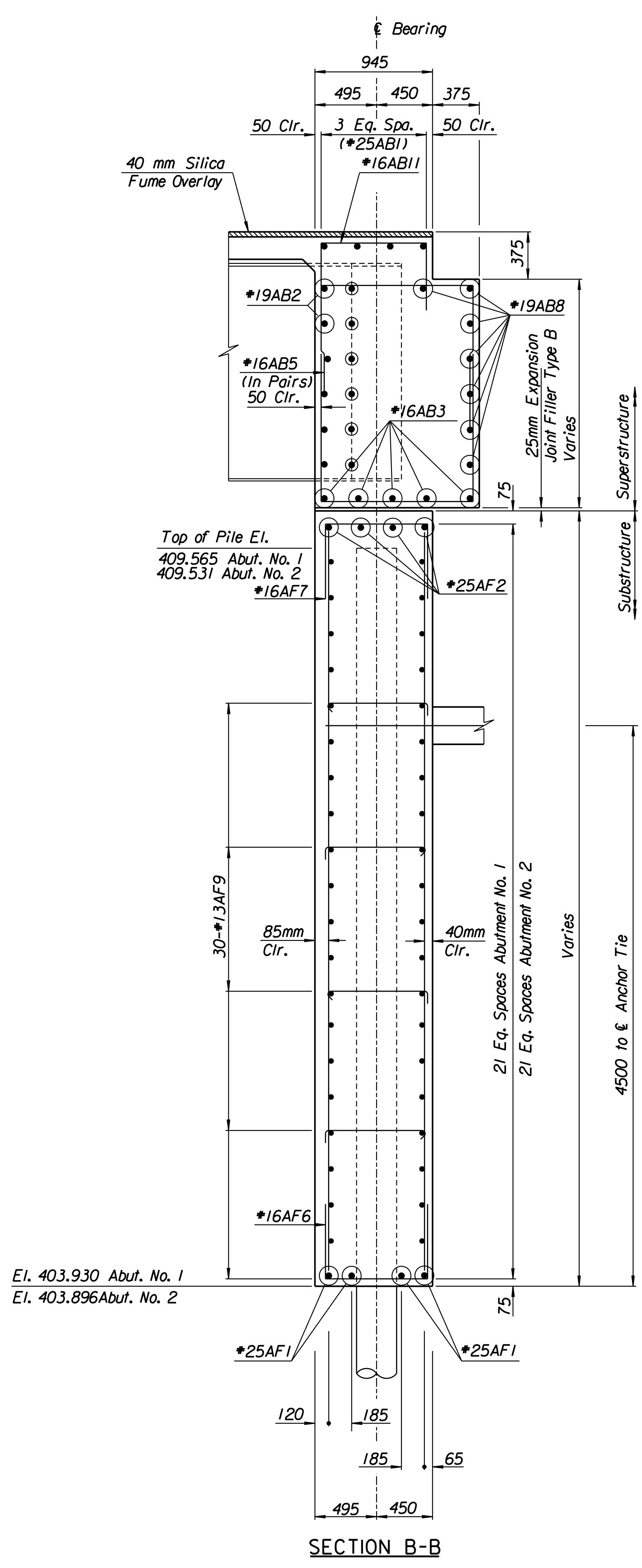
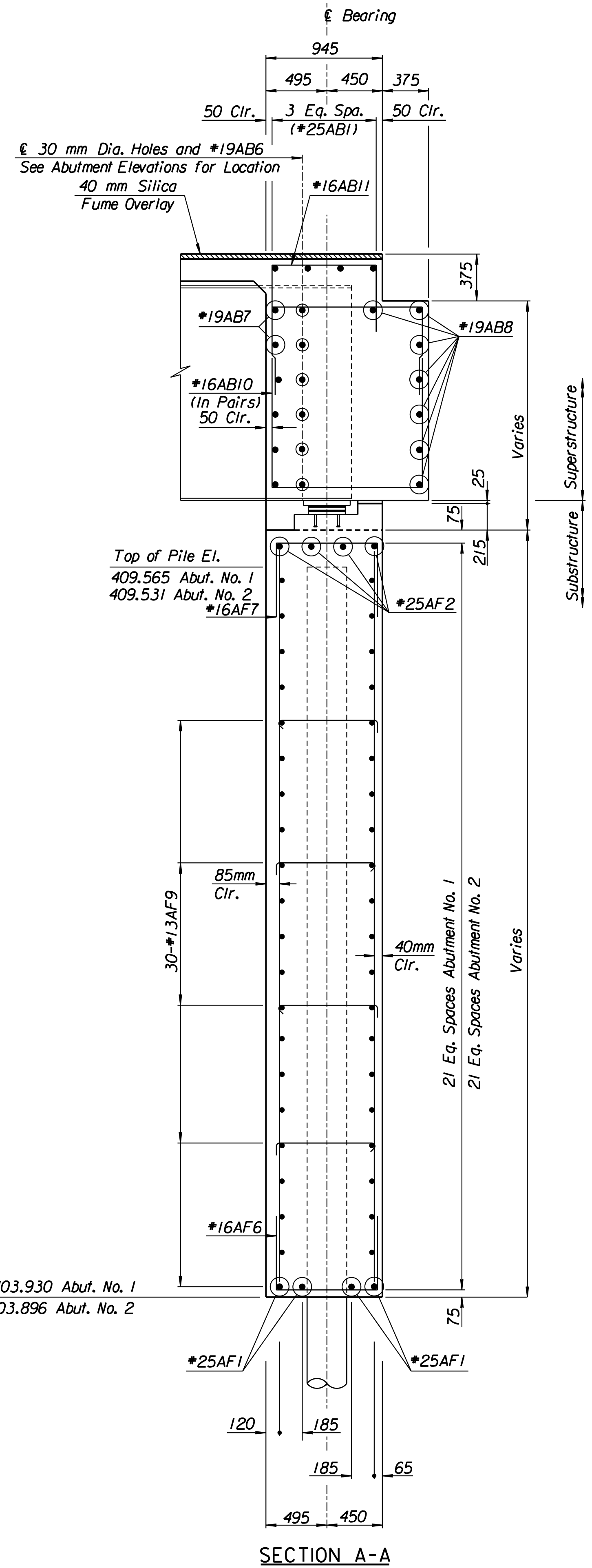


STATE	PROJECT NO.	YEAR	SHEET NO.	TOTAL SHEETS
KANSAS	54-87 K-6657-01	2002	577	1122



RECORD DRAWING

Scale 25  
 Drawn By: ras  
 Plotted By: gdr  
 I:/1997/97362/As-Builts/dgn's/Vol\_3/Sh 577-ABUT1EB.dgn Last Rev: 9-6-07 By: gdr

No.	Revisions	By	Date
CITY OF WICHITA BR. NO. 54-87-20.12(497) E.B. STA. 17+332.607			
KELLOGG OVER TYLER ROAD ABUTMENT SECTIONS SEDGWICK COUNTY			
Professional Engineering Consultants, P.A. 303 S. TOPEKA - WICHITA, KANSAS 67202 316-262-2691 • FAX 316-262-3003			
Designed by	RAS	Checked by	RAS
Drawn by	RAS	Date	April, 2002
		Job No.	97362