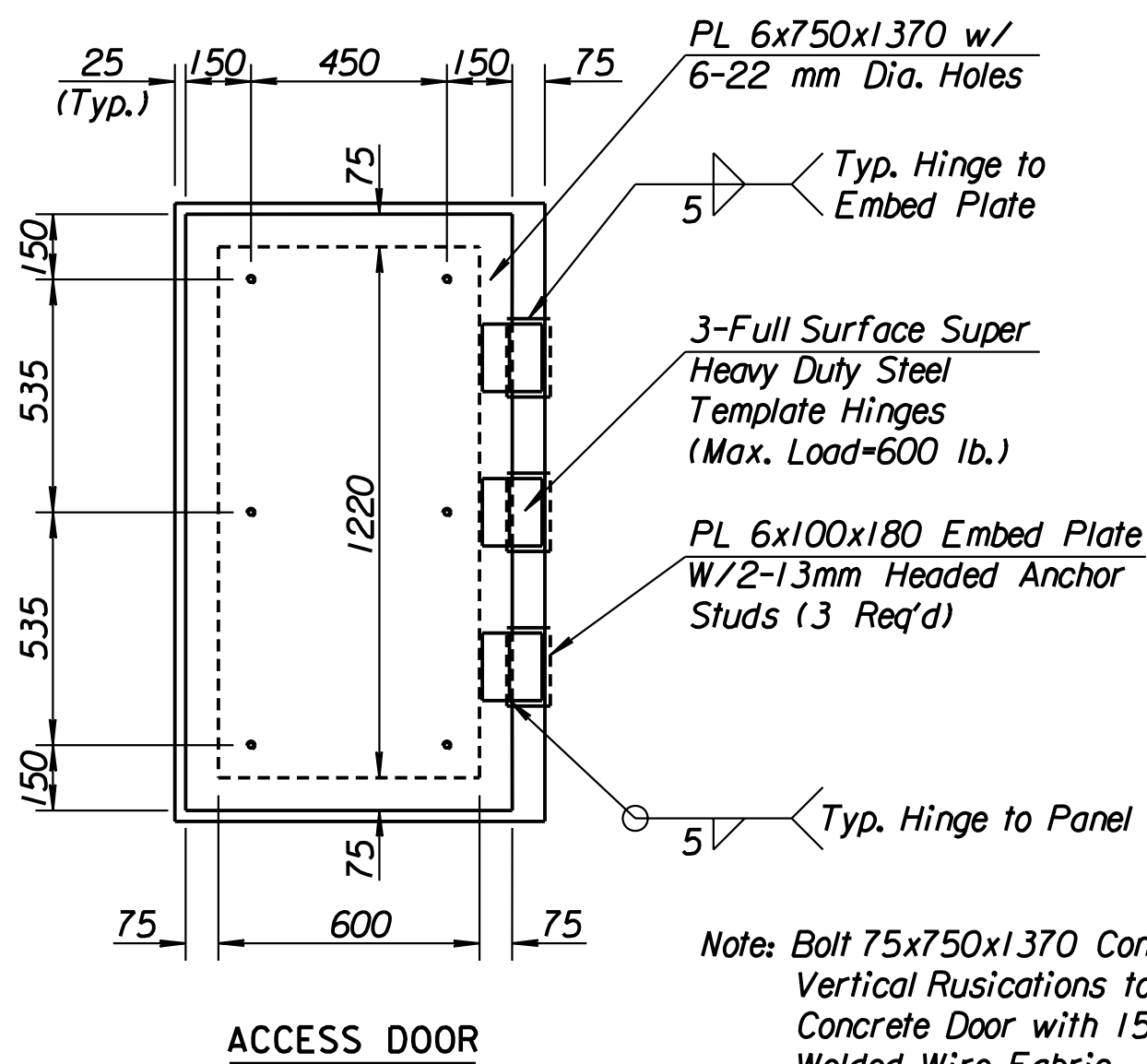
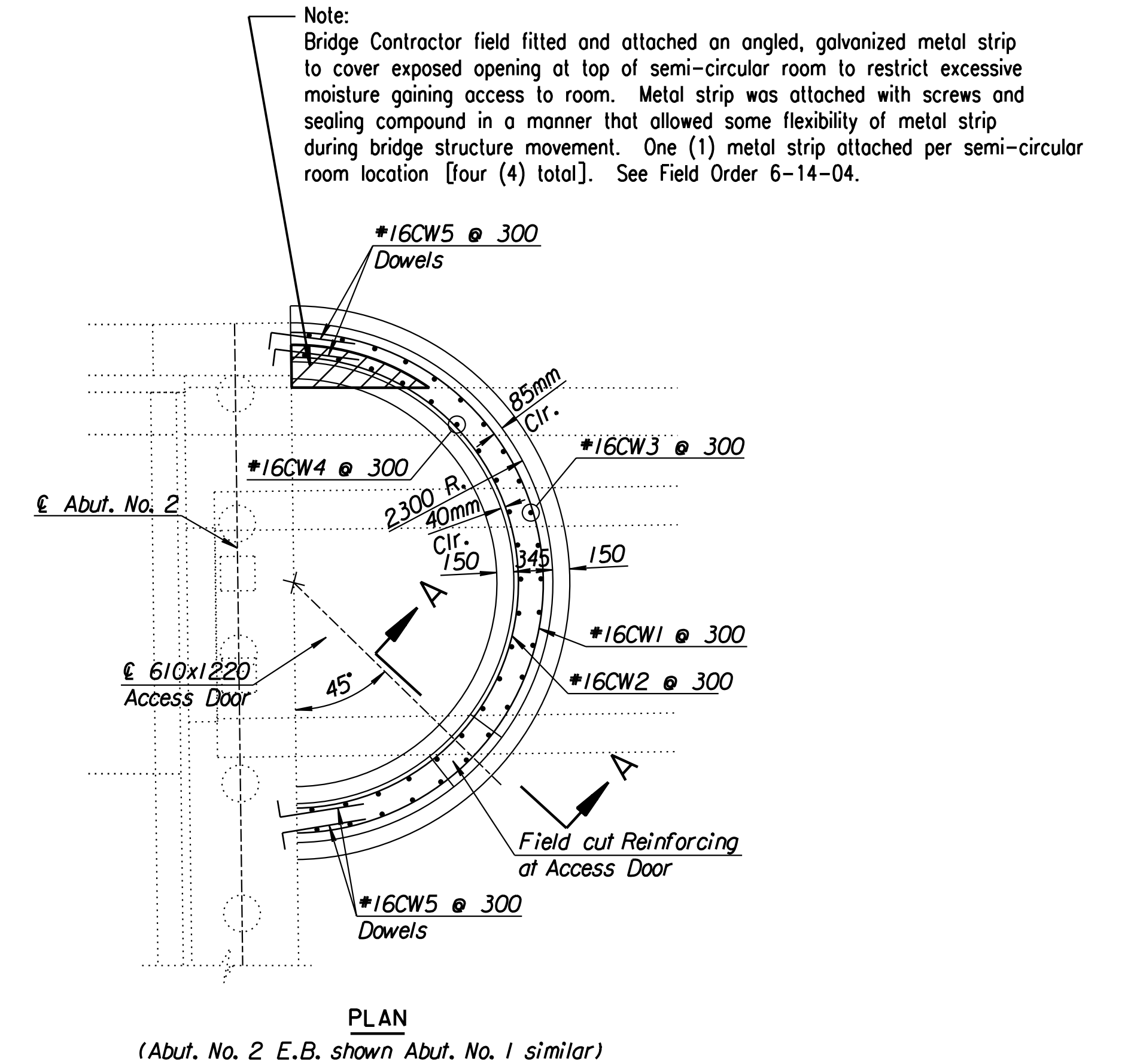
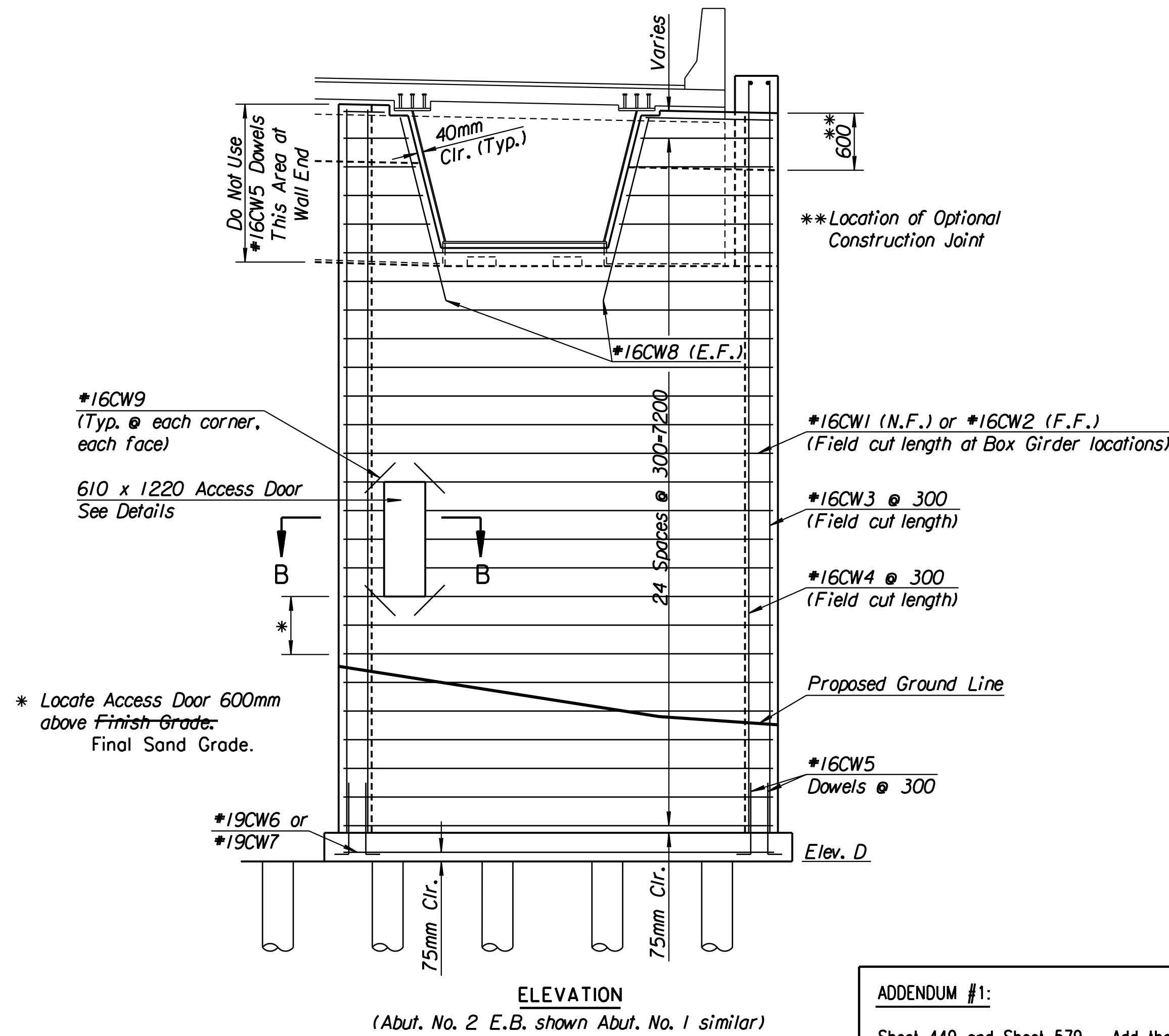
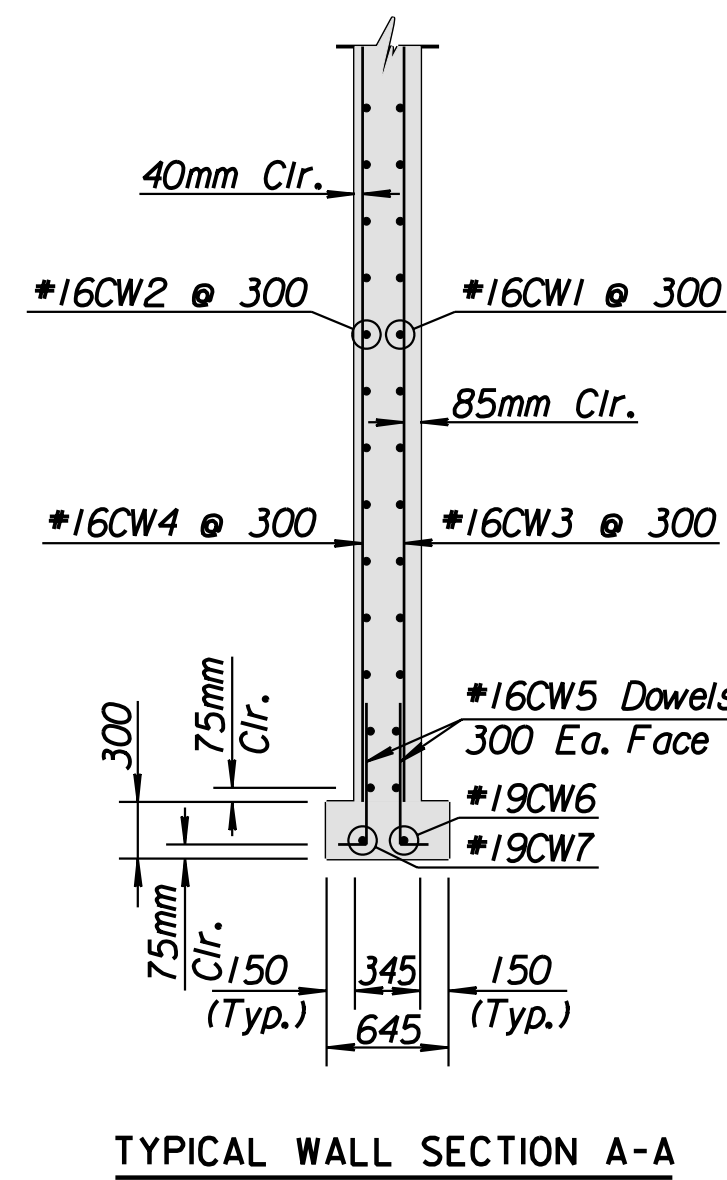
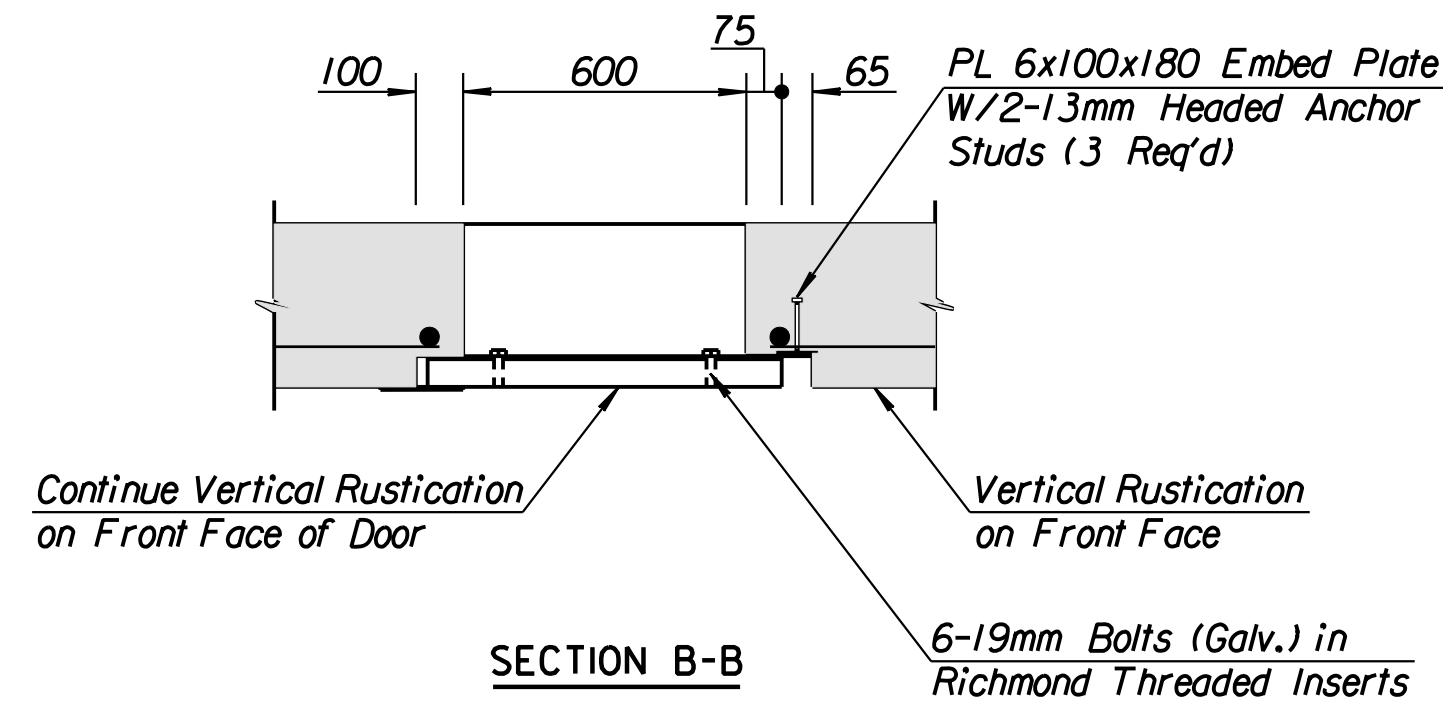
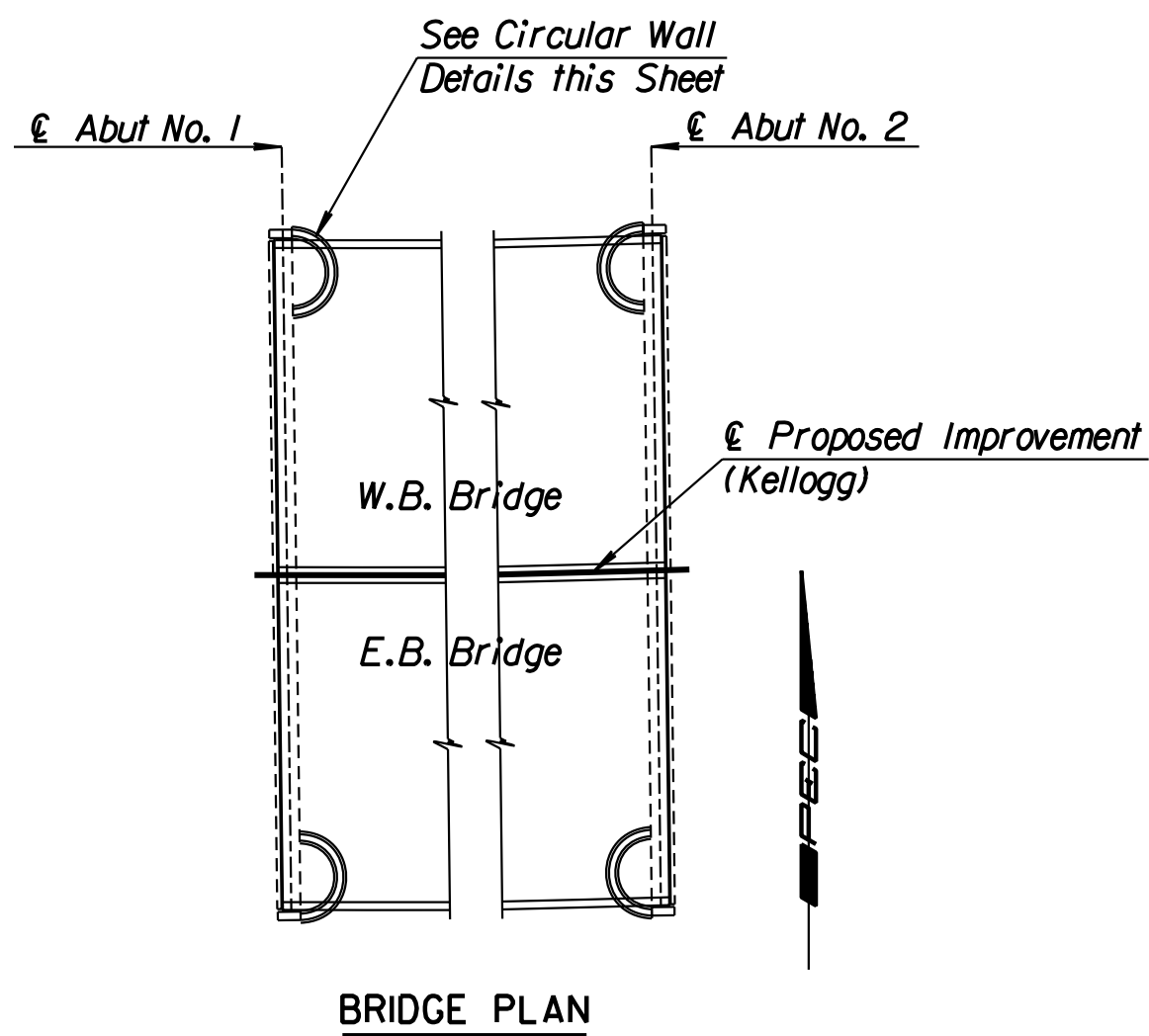


STATE	PROJECT NO.	YEAR	SHEET NO.	TOTAL SHEETS
KANSAS	54-87 K-6657-01	2002	579	1122

DATE	
BY	
REFERENCES NOTED	
REFERENCES CHECKED	



Note: Bolt 75x750x1370 Concrete Panel with Vertical Rustications to PL 6x750x1370. Reinforce Concrete Door with 150x150-MW10xMW10 Welded Wire Fabric.

**ADDENDUM #1:**  
 Sheet 449 and Sheet 579 Add the following notes:  
 1. The exterior exposed face of the circular walls including the access door shall be a smooth textured surface and stained with the "Surface Coating Finish" in accordance with the specifications. Circular walls shall be measured and paid for at the unit prices bid for "Concrete (Grade 30)(AE) and Reinforcing Steel (Gr. 420). Quantities are included in the Substructure Quantities.

Access Door at Circular Wall locations is subsidiary to bid item Reinforced Concrete-Circular Walls. Quantities for Circular Walls are listed in the Substructure Quantities on the General Notes sheets. No deductions in Concrete and Reinforcing were made for Access Door openings.

See Circular Wall Dimensions Sheet for Dimensions and Elevations.

**RECORD DRAWING**

Revisions		By	Date
No.			
CITY OF WICHITA BR. NO. 54-87-20.13 (496) W.B. STA. 17+332.607 BR. NO. 54-87-20.12 (497) E.B. STA. 17+332.607			
<b>CIRCULAR WALL DETAILS</b>			
TYLER ROAD SEDGWICK COUNTY			
<b>Professional Engineering Consultants, P.A.</b>			
303 S. TOPEKA • WICHITA, KANSAS 67202 316-262-2691 • FAX 316-262-3003			
Designed by	RWA	Checked by	RAS
Drawn by	DRP	Date	April, 2002
		Job No.	97362

DSWR: RWA OPER: DRP SCALE: 40:1  
 i:/1997/97362/As-Built/dgn's/VoL\_3/5h 579-circularwall.dgn Last Rev: 9-6-07 By: gdr