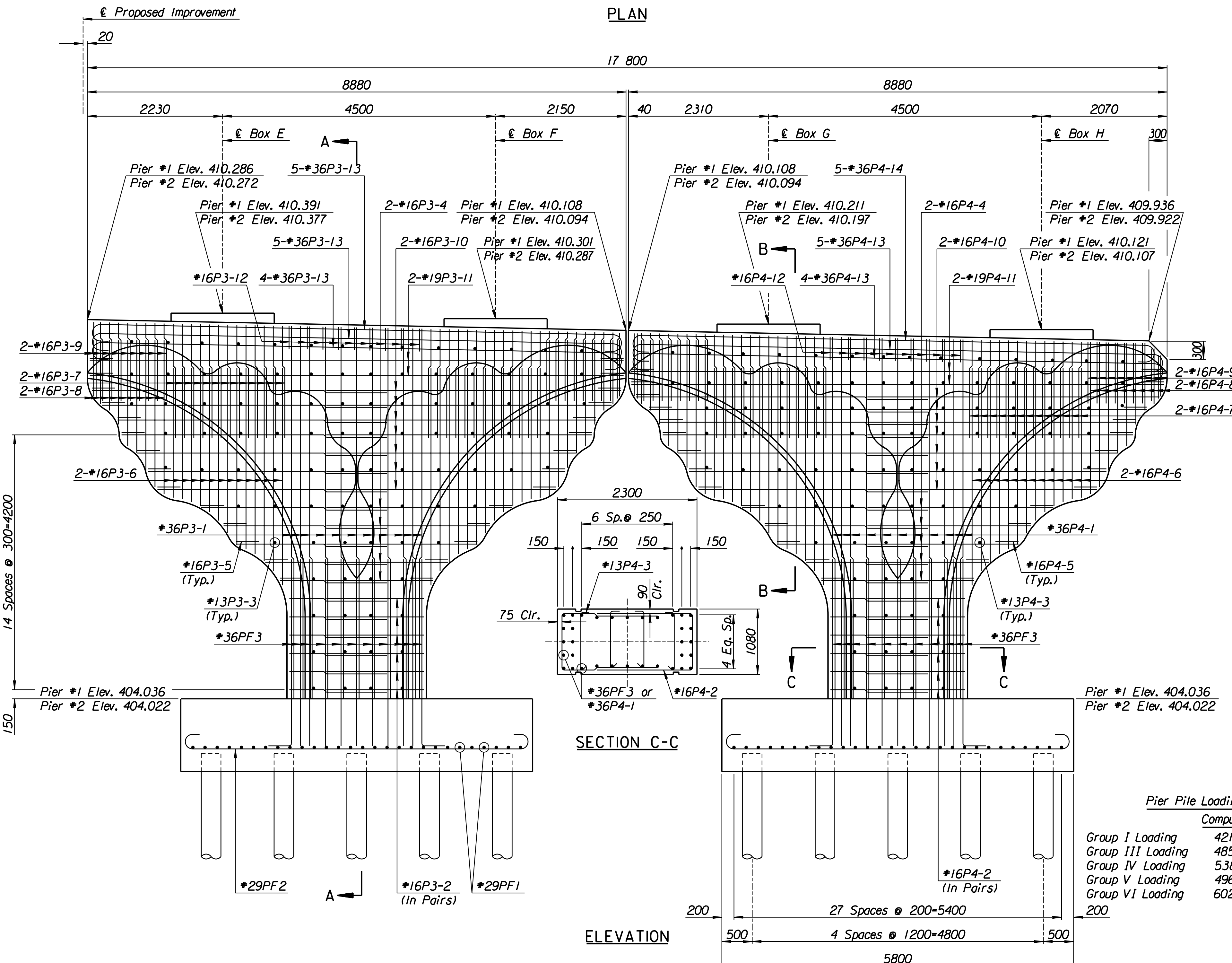
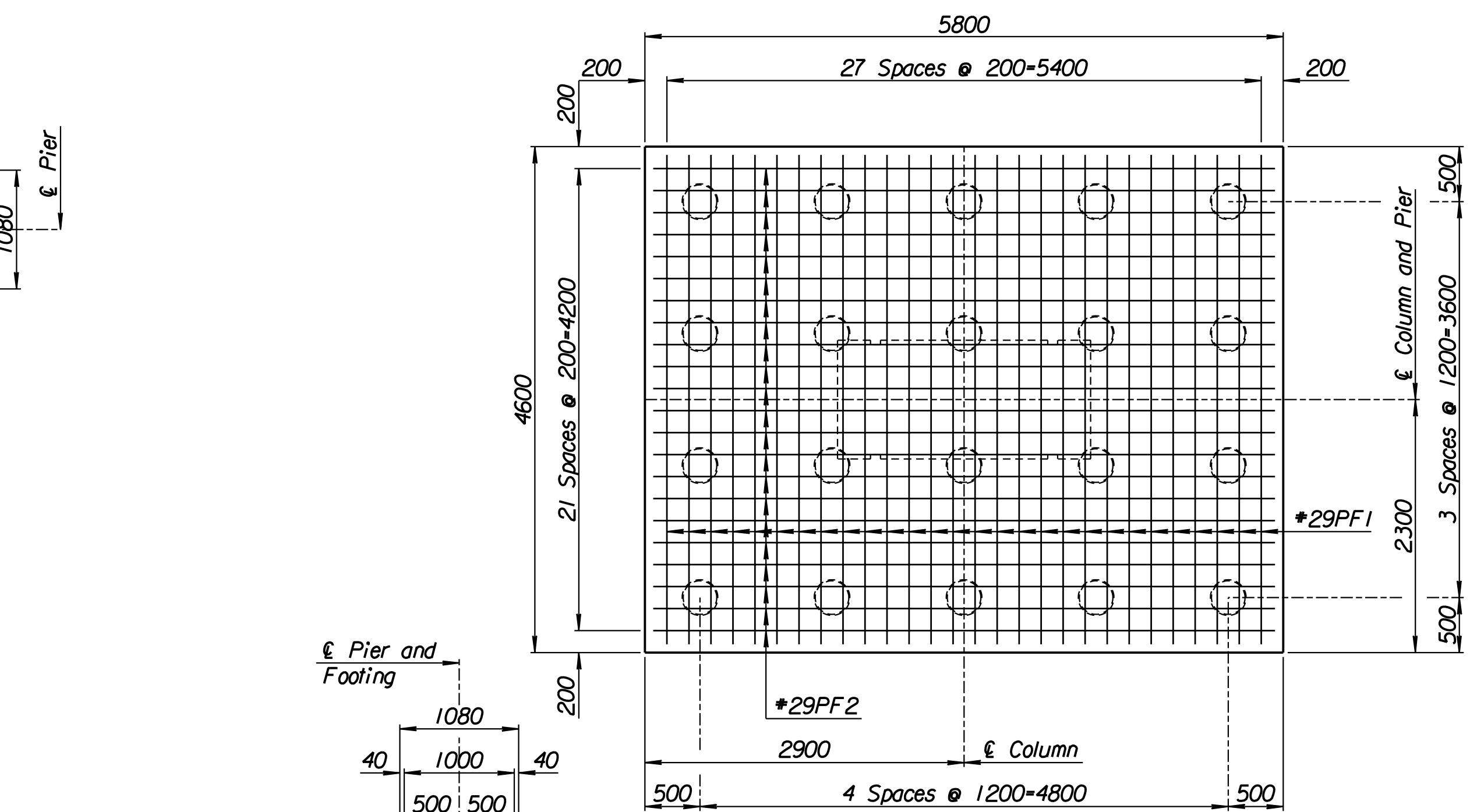


PLAN

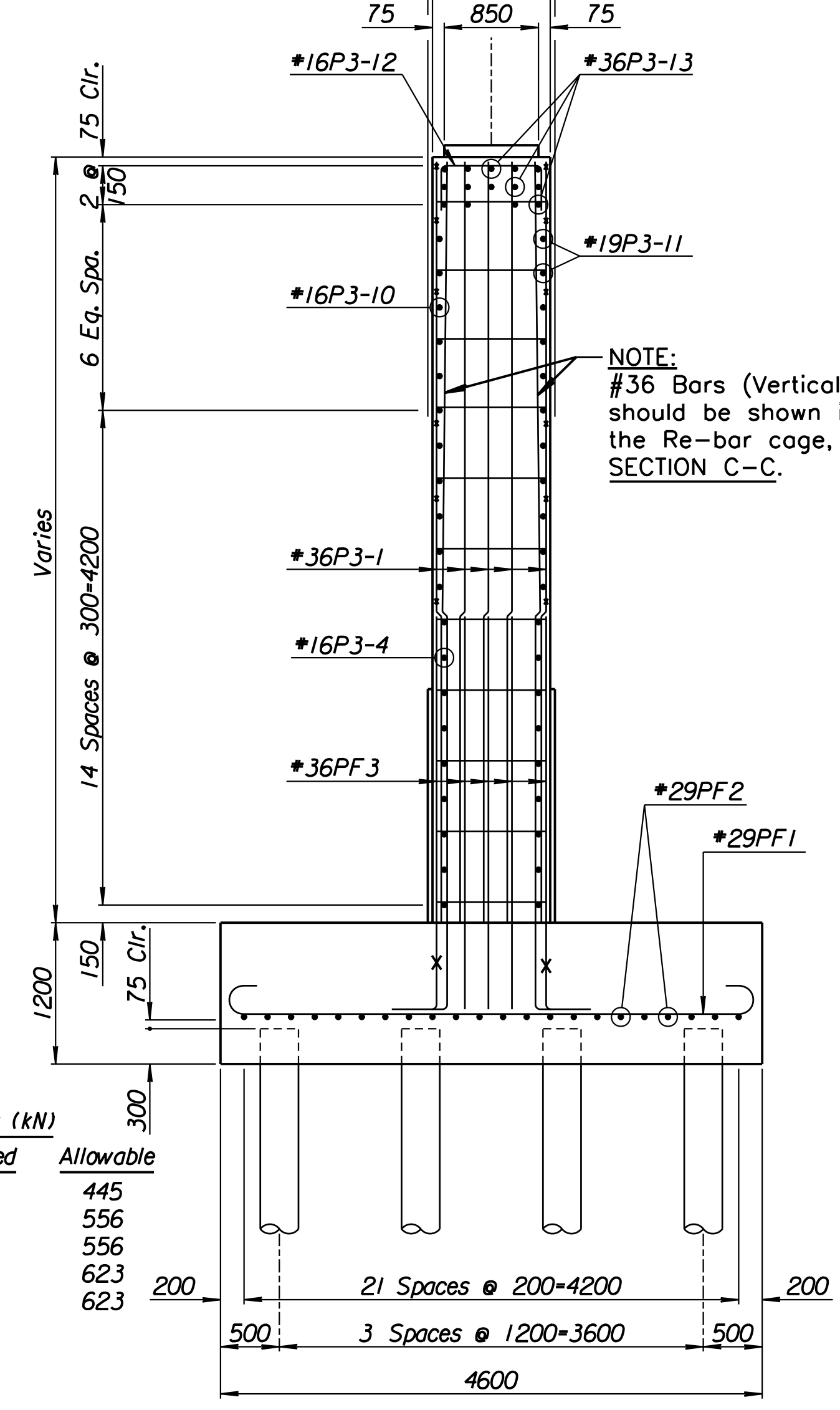


SECTION C-C

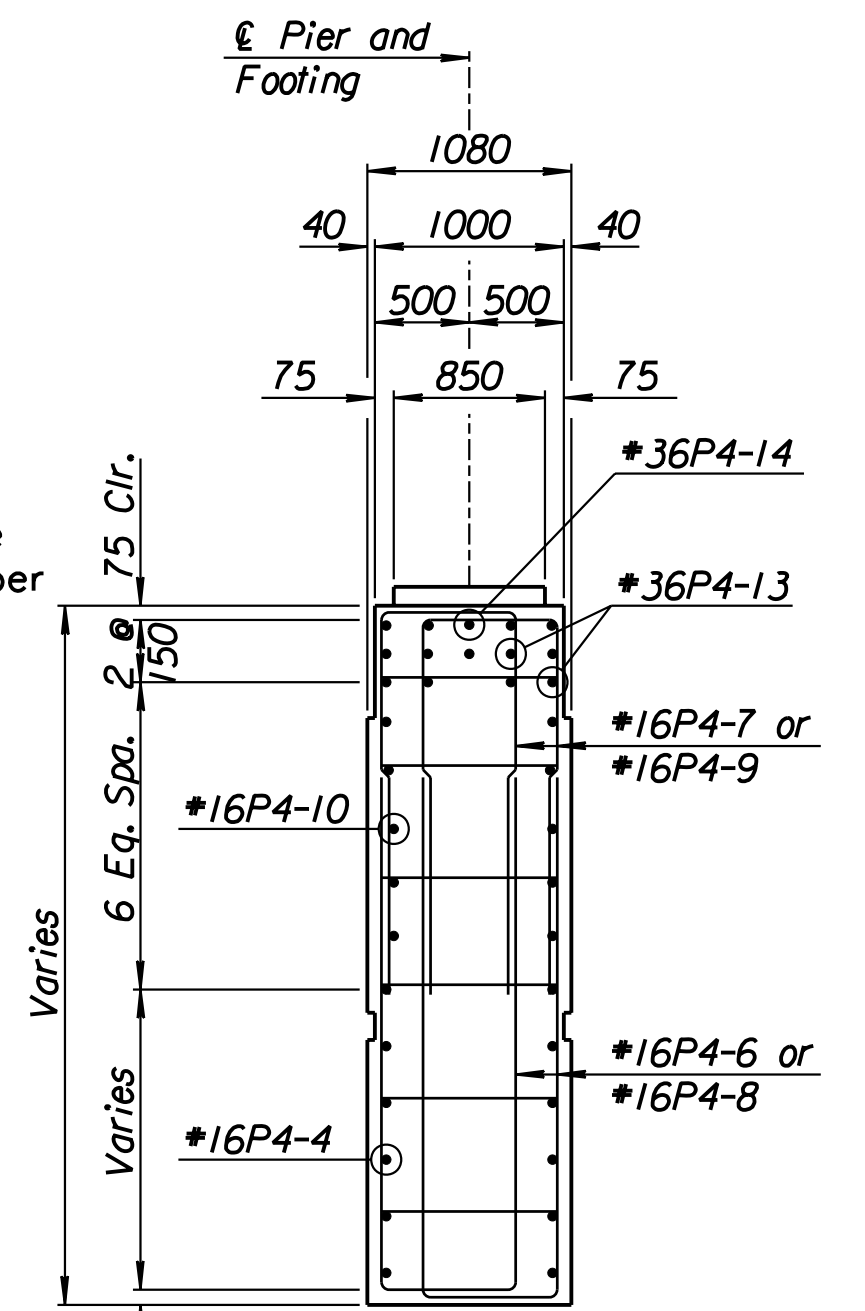
ELEVATION



FOOTING PLAN



SECTION A-A



SECTION B-B

Pier Pile Loading (kN)

	Computed	Allowable
Group I Loading	421	445
Group III Loading	485	556
Group IV Loading	538	556
Group V Loading	496	623
Group VI Loading	602	623

NOTE:
#36 Bars (Vertical)
should be shown inside
the Re-bar cage, as per
SECTION C-C.

RECORD DRAWING

1			
No.	Revisions	By	Date
CITY OF WICHITA			
BR. NO. 54-87-20.12 (497) E.B.		STA. 17+332.607	
PIER DETAILS			
KELLOGG (US-54)			
OVER TYLER ROAD			
SEDGWICK COUNTY			
Professional Engineering Consultants, P.A.			
303 S. TOPEKA • WICHITA, KANSAS 67202			
316-262-2691 • FAX 316-262-3003			
Designed by	P.D.F.	Checked by	R.A.S.
Drawn by	W.L.L.	Date	April 11, 2002
		Job No.	97362

Drawn by: wil
 Plotted by: gdr
 1/1997/97362/As-Built/dgn/vol_3/Sh 585-pier.dgn Last Rev: 9-6-07 By: gdr