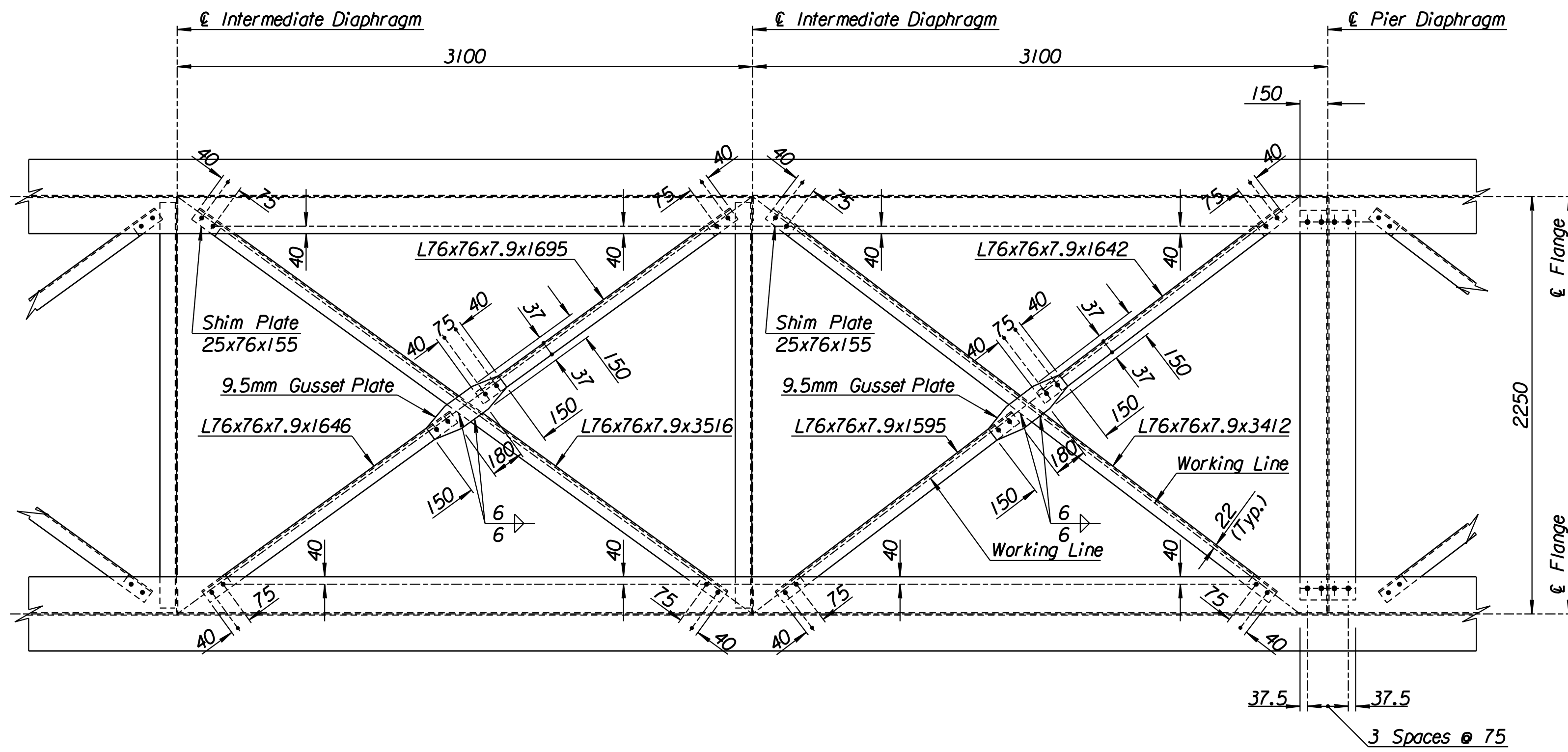
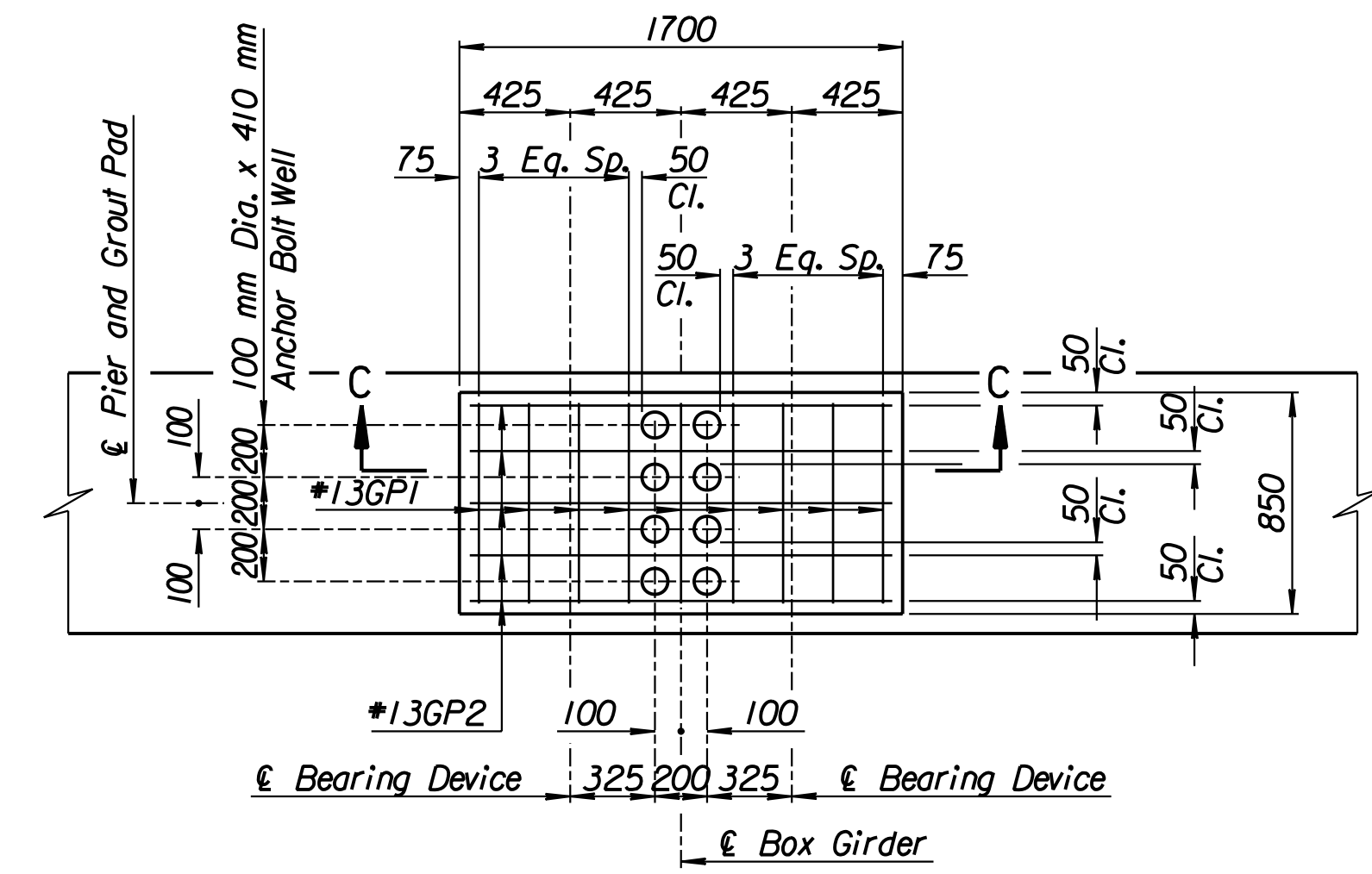


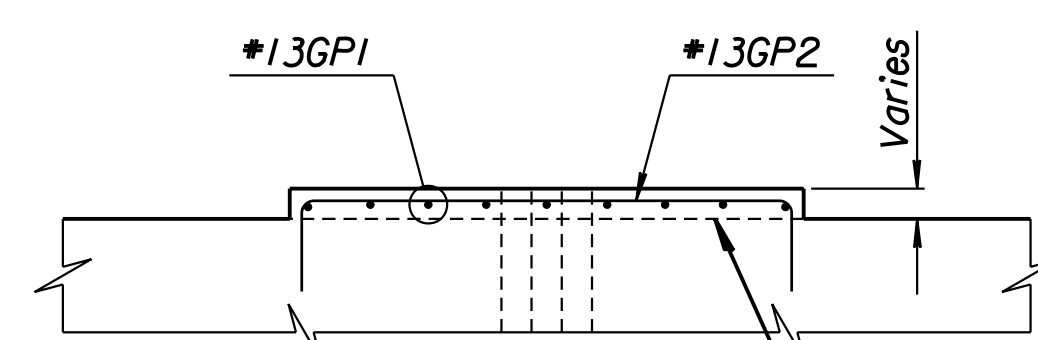
STATE	PROJECT NO.	YEAR	SHEET NO.	TOTAL SHEETS
KANSAS	54-87 K-6657-01	2002	591	1122



LATERAL BRACING

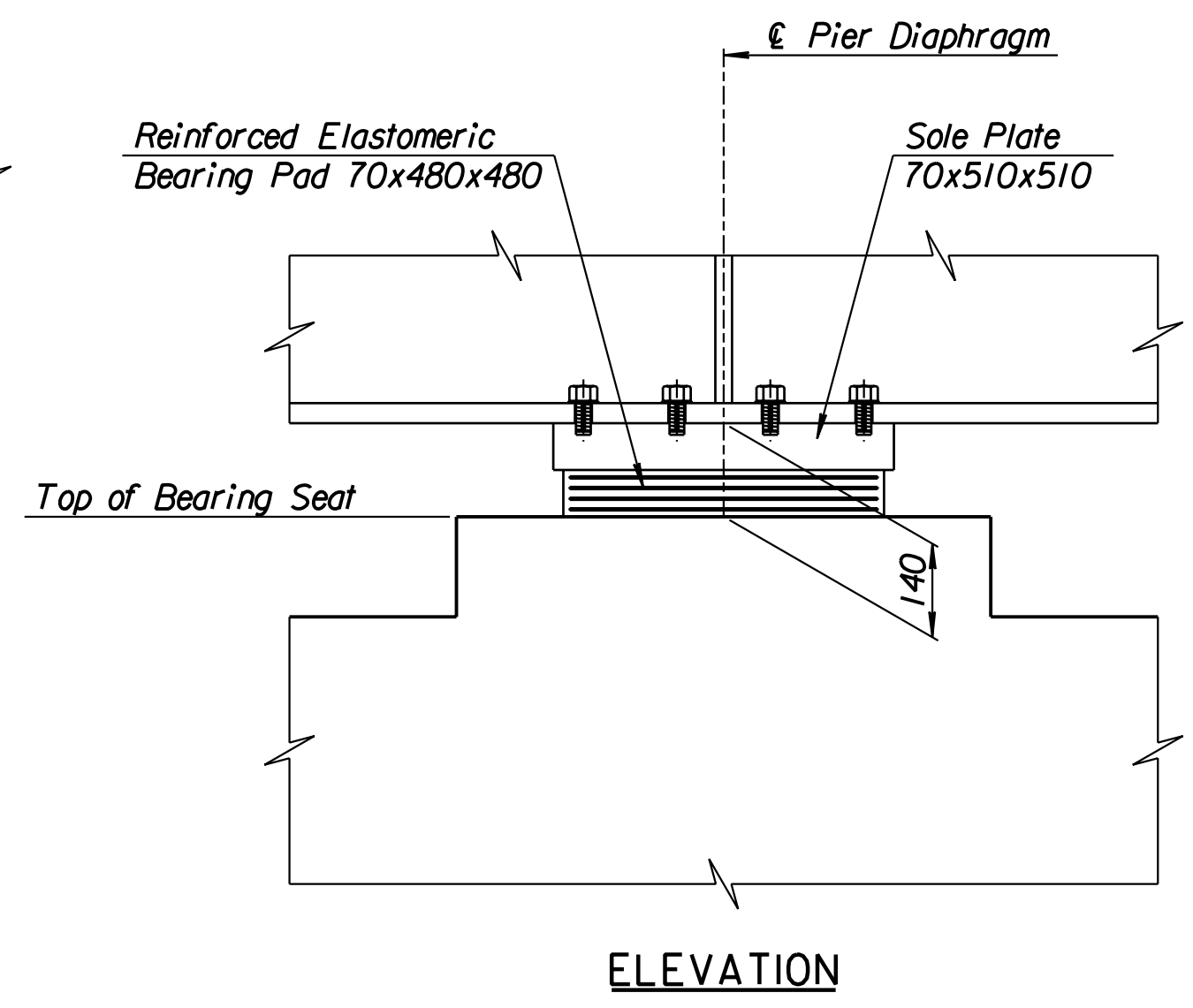


GROUT PAD PLAN

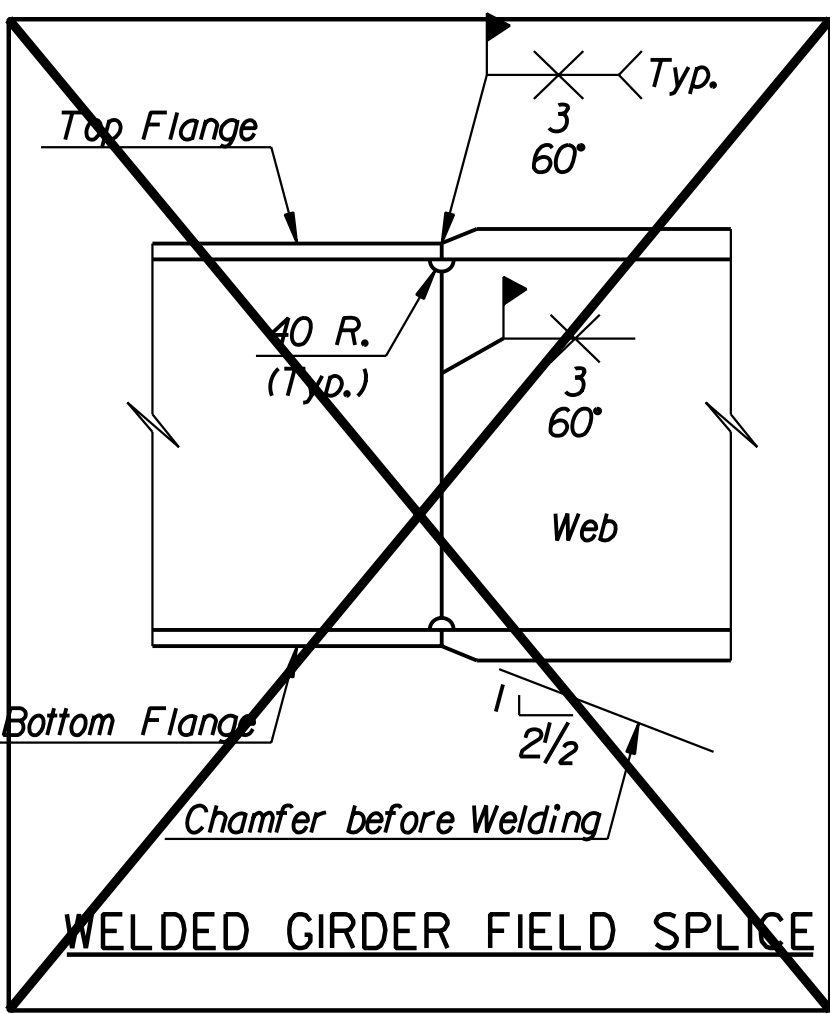
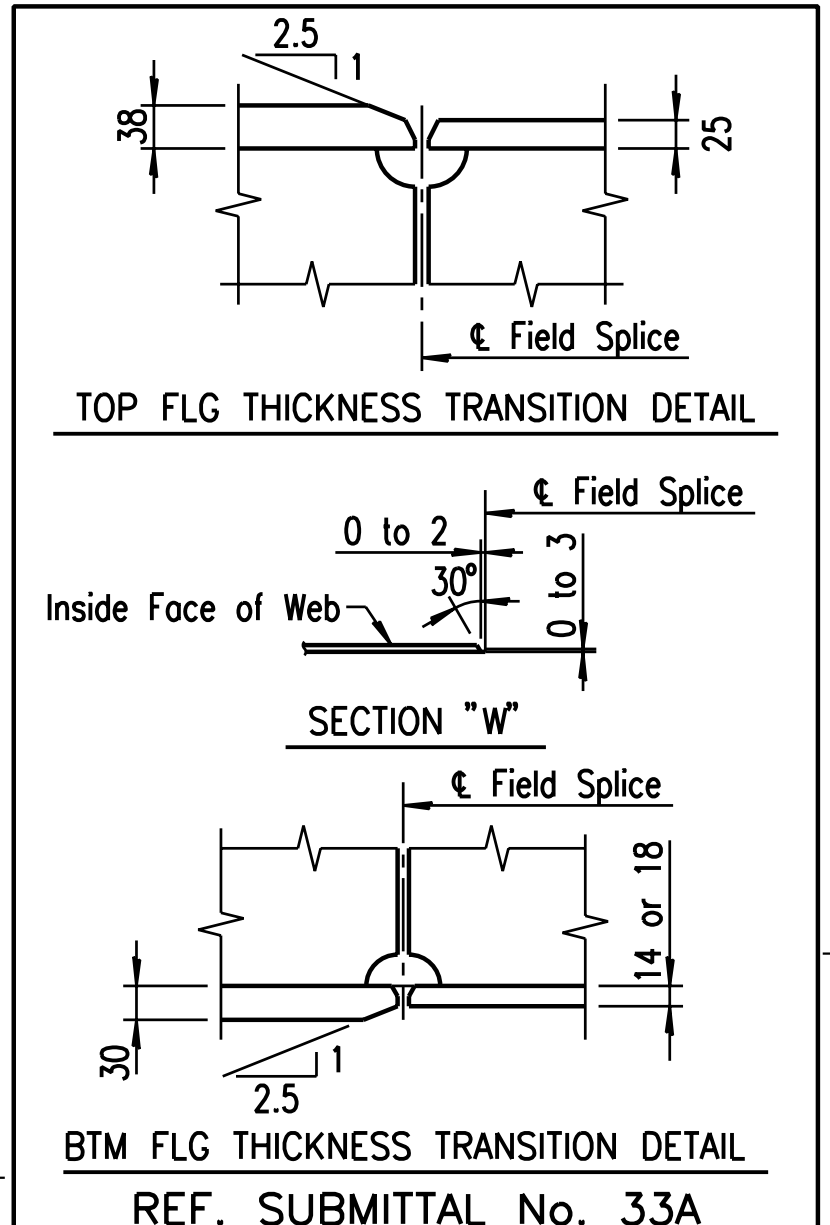


SECTION C-C

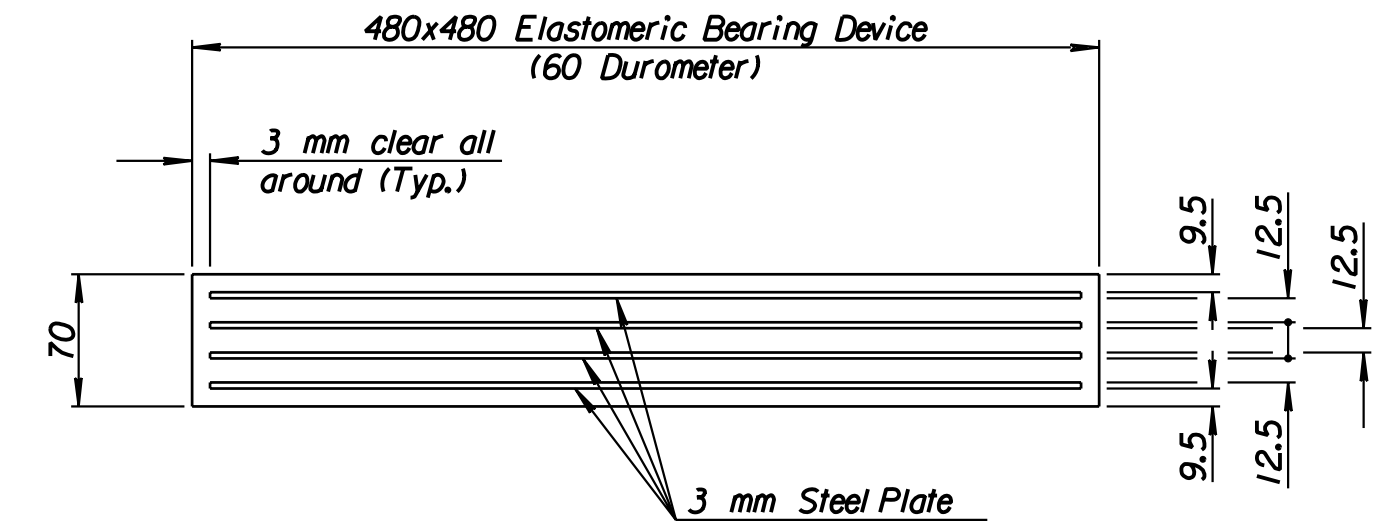
NOTE:
A "roughened" construction joint is acceptable between the "top of pier" and "grout pad". The #13GP1 and #13GP2 bars should extend into the top of pier, when pier structure is cast.



ELEVATION



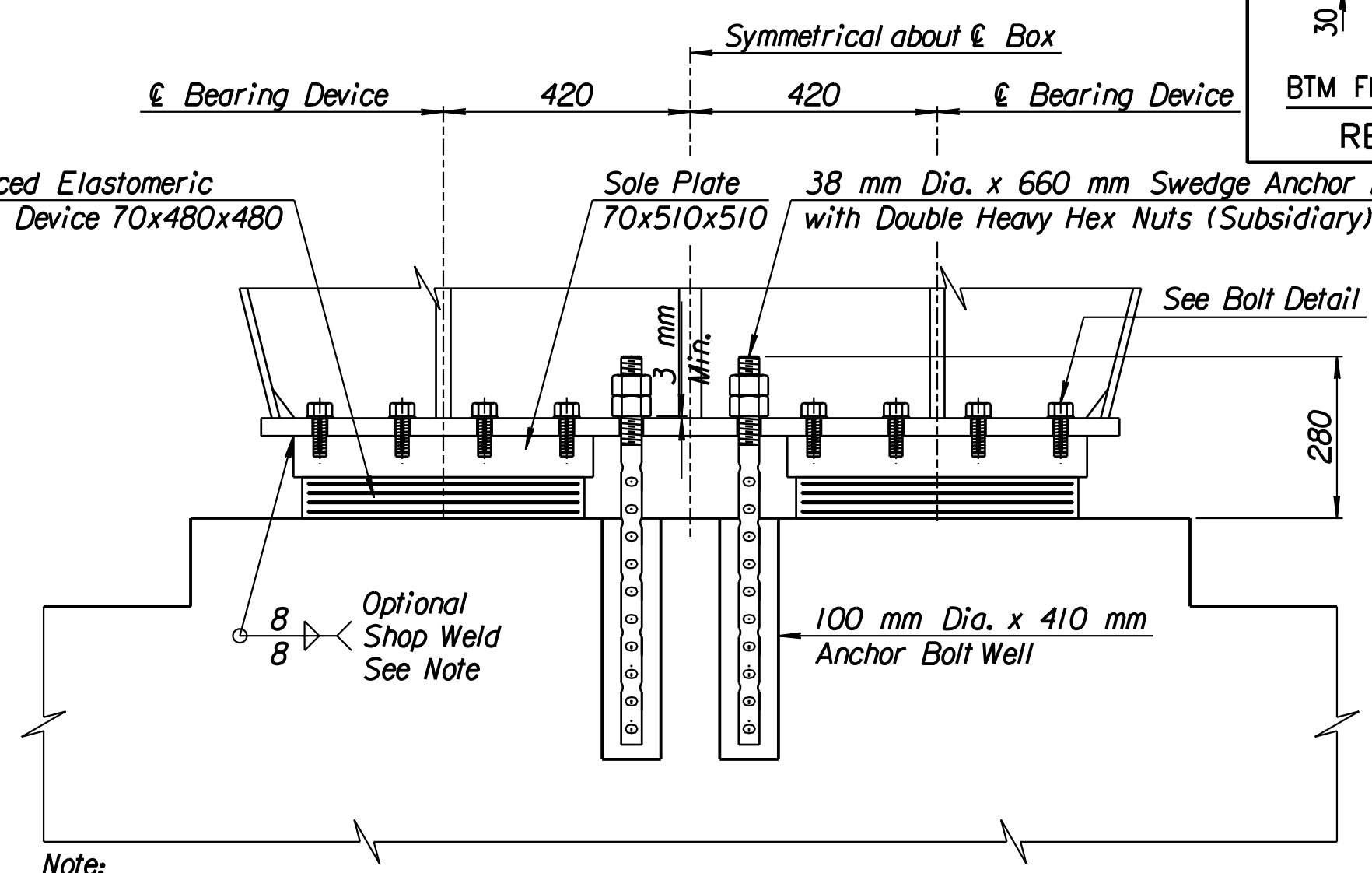
WELDED GIRDER FIELD SPlice



ELASTOMERIC BEARING DEVICE (16 Required per Bridge)

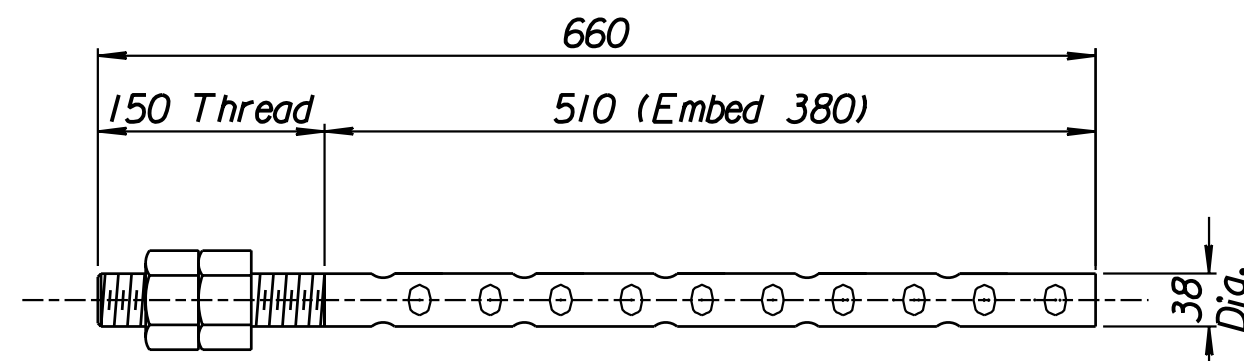
ELASTOMERIC BEARING DEVICES:
The Elastomeric Bearing Devices shall be bonded to the (A709M Gr. 345) steel sole plates by a vulcanizing process after which the sole plates shall receive a shop coat of Inorganic Zinc Primer. All exposed surfaces of the sole plates shall receive the water-borne acrylic finish coat after the plates have been welded to the bottom of the girder. The sole plate is to be included in the bid item "Elastomeric Bearing Devices" and furnished by the bearing device fabricator.

STEEL REINFORCED ELASTOMERIC BEARINGS:
Bearings were designed using the provisions of Method A of the AASHTO Specifications.



ELEVATION

Note:
Sole Plate may be Shop Welded to the Bottom Flange in lieu of using bolts or by Plug Welds in the field.

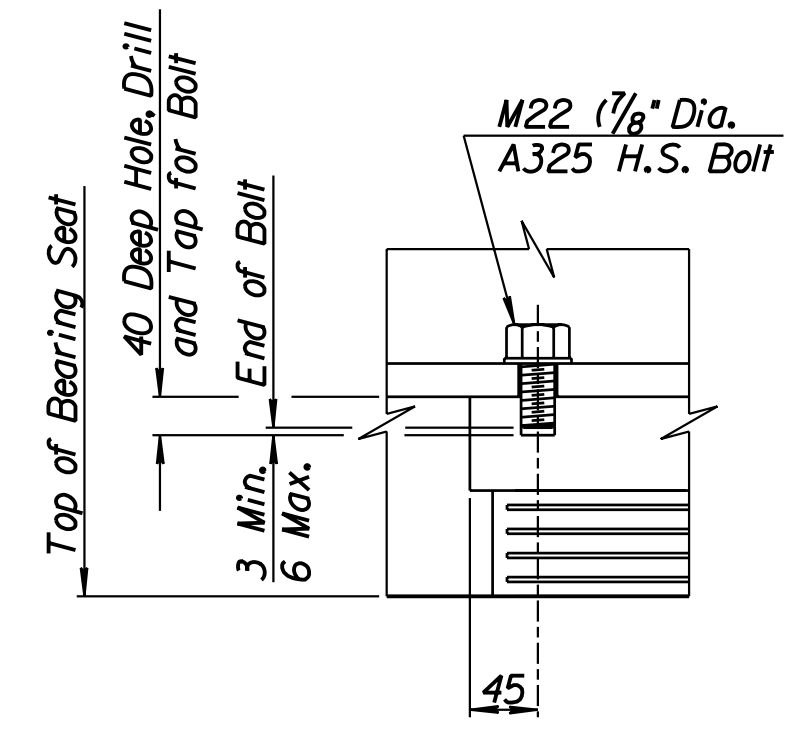


SWEDGE ANCHOR BOLT (64 Required per Bridge)

ANCHOR BOLTS: Place the reinforcing bars below the bearing devices to clear the anchor bolts.

Anchor bolt placements must be adjusted based on Ambient Temperature. Anchor bolts should be centered in the Slotted Holes at 15°C. Relative adjustments shall be made based on 0.60mm of contraction or expansion per degree Celsius.

PREFORMED ANCHOR BOLT HOLES: Preform 100 mm diameter holes using corrugated polyethylene tubing (Type C) at the locations shown. Seal the preformed holes to prevent water from accumulating in the holes and freezing prior to the time of grouting the anchor bolts. The holes will be free of water or foreign materials at the time of grouting. This work and bolts shall be subsidiary to Concrete Grade 30 (AE) (SA).



BOLT DETAIL

Drawn by: wil
 Plotted by: gdr
 1/1997/97/362/As-Built/dgn/s/Vol_3/Sh_591-miscdet.dgn Last Rev: 9-6-07 By: gdr
 Sept. 07

1			
No.	Revisions	By	Date
CITY OF WICHITA BR. NO. 54-87-20.13 (496) W.B. STA. 17+332.607 BR. NO. 54-87-20.12 (497) E.B. STA. 17+332.607 MISCELLANEOUS DETAILS KELLOGG (US-54) OVER TYLER ROAD SEDGWICK COUNTY			
Professional Engineering Consultants, P.A. 303 S. TOPEKA • WICHITA, KANSAS 67202 316-262-2691 • FAX 316-262-3003			
Designed by	P.D.F.	Checked by	R.A.S.
Drawn by	W.L.L.	Date	Apr 11 2002
		Job No.	97362

RECORD DRAWING