

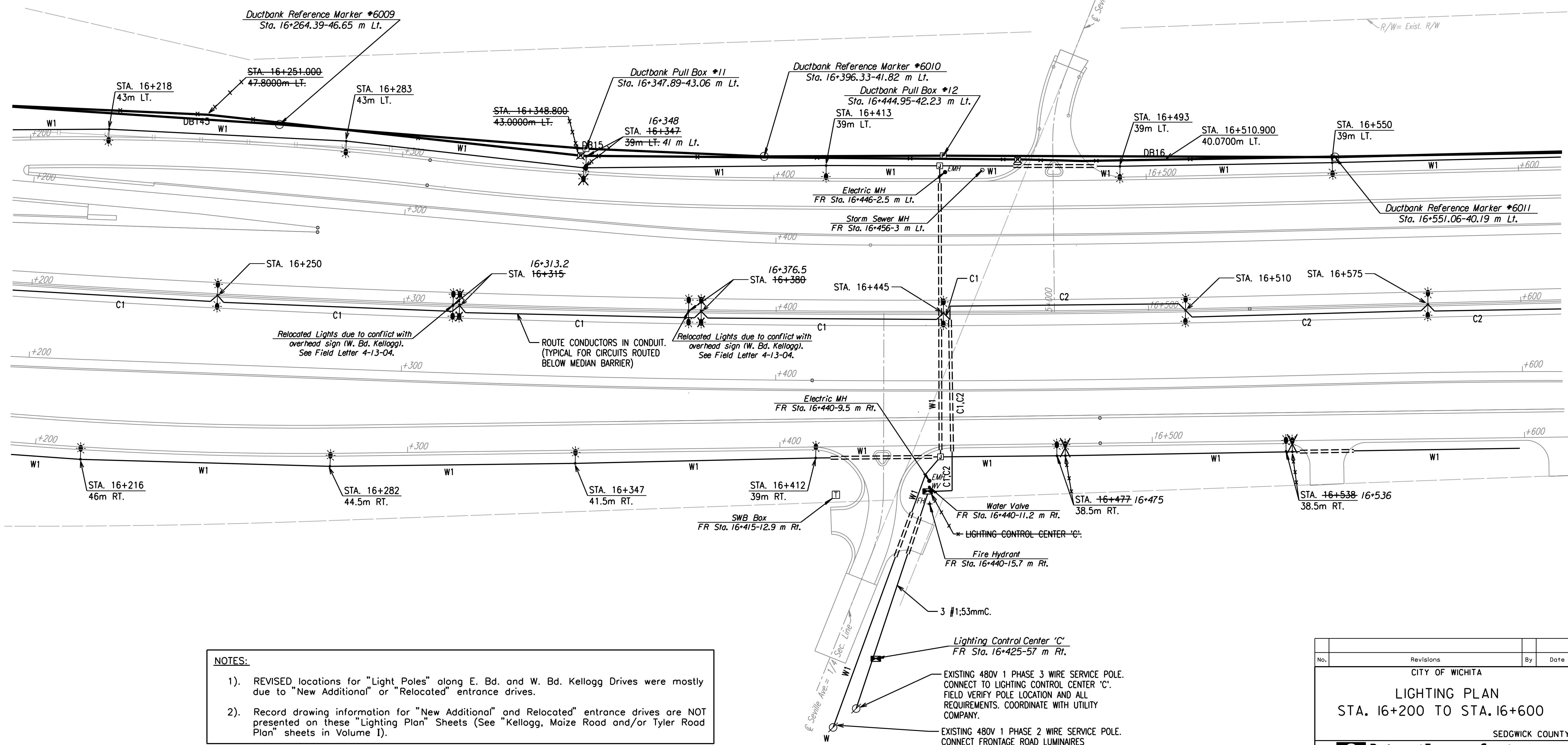
FHWA REGION NO.	STATE	PROJECT NO.	YEAR	SHEET NO.	TOTAL SHEETS
7	KANSAS	54-87 K-6657-01	2002	639	1122

CONTROL CENTER 'C' CIRCUIT SCHEDULE					
CIRCUIT I.D.	LOAD (AMPS)	CKT. BKR. SIZE (AMPS)	WIRE SIZE	GROUND SIZE	CONTACTOR SIZE
C1	8.8	20	#6	#6	30A
C2	7.5	20	#6	#6	30A
-	-	-	-	-	-
-	-	-	-	-	-
MAIN CIRCUIT BREAKER SIZE: 2-POLE, 60 AMP, 480V					

FRONTAGE ROAD 'W' CIRCUIT SCHEDULE			
CIRCUIT I.D.	LOAD (AMPS)	WIRE SIZE	GROUND SIZE
W1	15	#6	#6
-	-	-	-
-	-	-	-
480V, 1 PHASE, 2 WIRE			

NOTE:
SEE PLAN SHEETS FOR UTILITIES. THE INFORMATION SHOWN ON THE PLAN SHEETS CONCERNING TYPE AND LOCATION OF UNDERGROUND UTILITIES IS NOT GUARANTEED TO BE ACCURATE OR ALL INCLUSIVE. THE CONTRACTOR IS RESPONSIBLE FOR MAKING HIS OWN VERIFICATION AS TO THE TYPE AND LOCATION OF UNDERGROUND UTILITIES AS MAY BE NECESSARY TO AVOID DAMAGE THERETO. THE CONTRACTOR IS RESPONSIBLE FOR REPAIRING ANY DAMAGE TO UNDERGROUND UTILITIES.

DATE	
BY	
REFERENCES NOTED	
REFERENCES CHECKED	



NOTES:

- REVISED locations for "Light Poles" along E. Bd. and W. Bd. Kellogg Drives were mostly due to "New Additional" or "Relocated" entrance drives.
- Record drawing information for "New Additional" and Relocated" entrance drives are NOT presented on these "Lighting Plan" Sheets (See "Kellogg, Maize Road and/or Tyler Road Plan" sheets in Volume I).

RECORD DRAWING

No.	Revisions	By	Date
CITY OF WICHITA			
LIGHTING PLAN			
STA. 16+200 TO STA. 16+600			
SEDGWICK COUNTY			
Professional Engineering Consultants, P.A. 303 S. TOPEKA • WICHITA, KANSAS 67202 316-262-2691 • FAX 316-262-3003			
Designed by	SMS	Checked by	SMS
Drawn by	WAN	Date	APRIL, 2002
		Job No.	97362

DSNR: WAN OPER: WAN SCALE: 500
 4/1997/97362/As-Built/s/dgn's/Vol.3/Sh 639-WK4639.dgn Lost Rev: 9-14-07 By: gdr