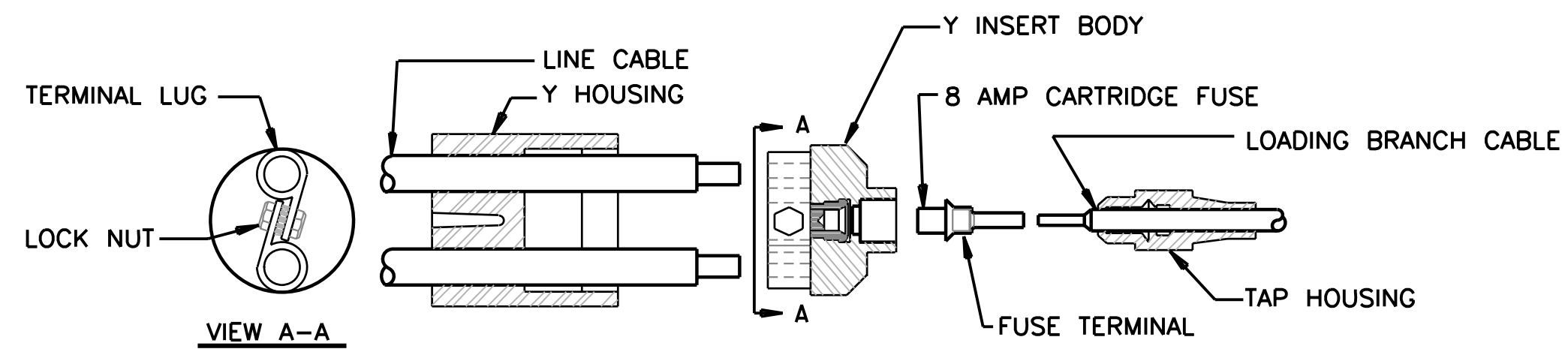
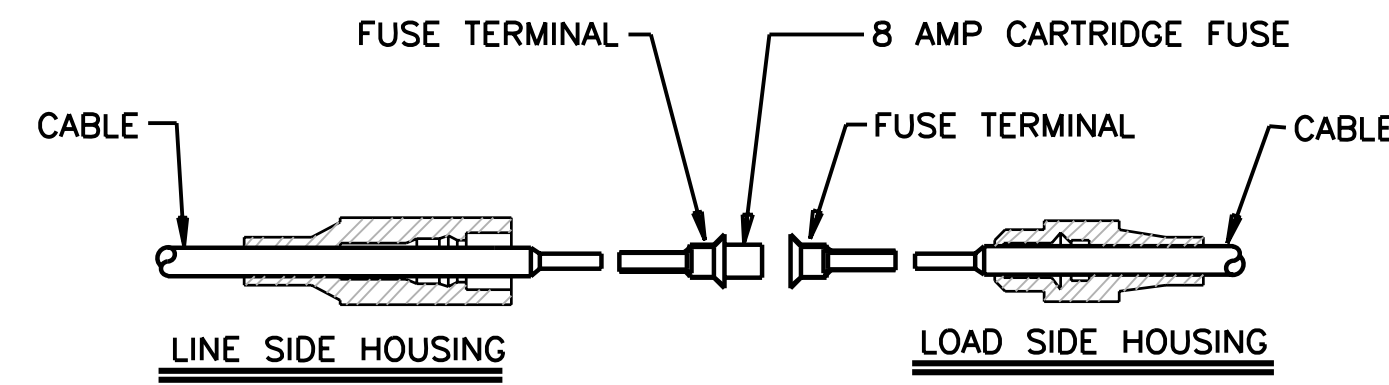


FHWA REGION NO.	STATE	PROJECT NO.	YEAR	SHEET NO.	TOTAL SHEETS
7	KANSAS	54-87 K-6657-01	2002	650	1122

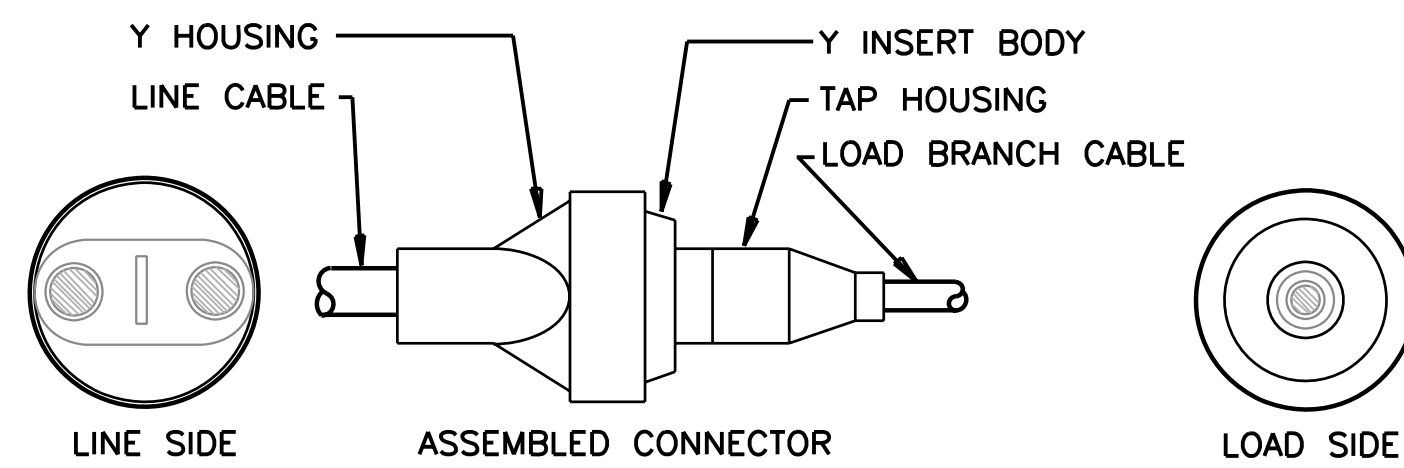


DETAILS OF TYPE Y-1 CONNECTOR

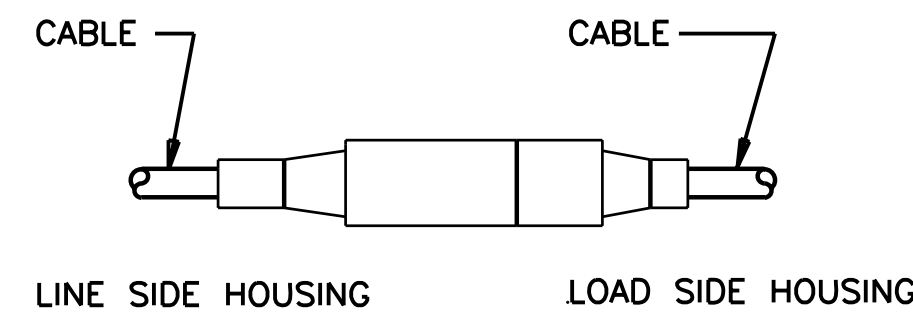
NOTE:
Y-1 CONNECTORS ARE FUSED
Y-2 AND Y-3 CONNECTORS
ARE UNFUSED



DETAILS OF TYPE L-1 CONNECTOR

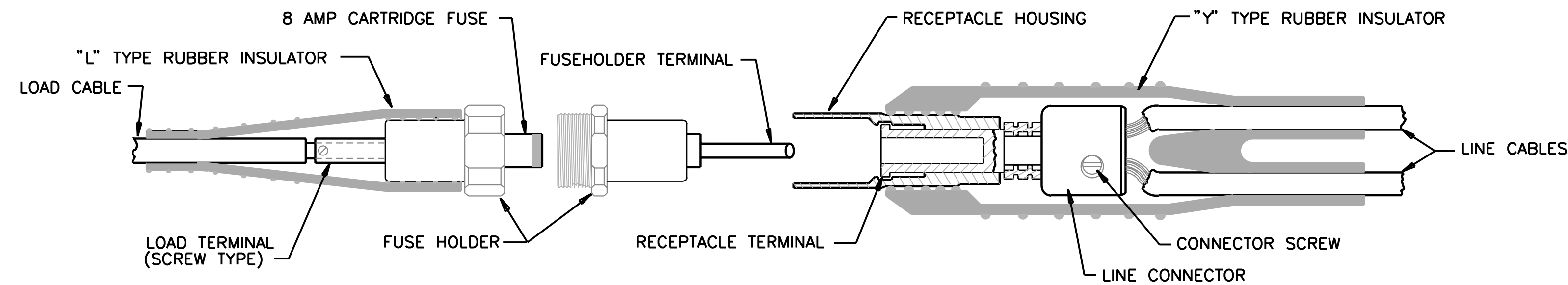


TYPE Y-1 OR Y-2 CONNECTOR SHOWN

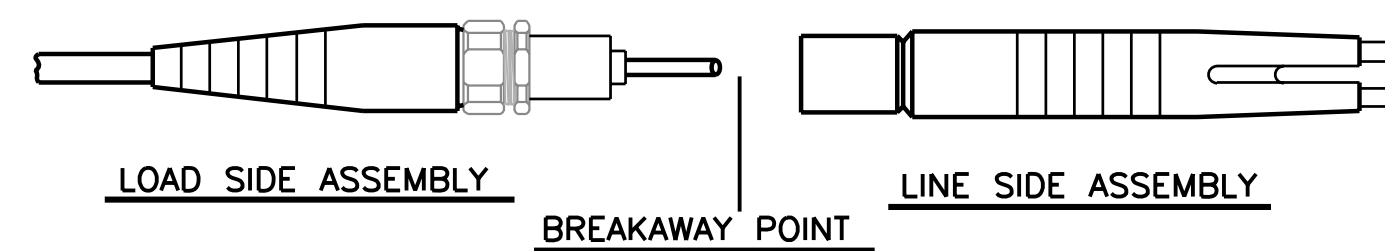


TYPE L-1 OR L-2 CONNECTOR SHOWN

NOTE:
L-1 CONNECTORS ARE FUSED
L-2 CONNECTORS ARE UNFUSED



DETAILS OF TYPE HEB-JW-RYH CONNECTOR



TYPE HEB-JW-RYH CONNECTOR SHOWN

NOTE:

WHENEVER THE SPECIFICATION CONFLICTS WITH THE STANDARD SPECIFICATIONS, THE PLAN SPECIFICATIONS SHALL GOVERN.

CONNECTORS:

1. DETAILS SHOWN HEREON ARE TYPICAL. ALTERNATE DESIGNS MAY BE SUBMITTED TO THE ENGINEER FOR APPROVAL. MINIMUM REQUIREMENTS AND SIMILAR MATERIALS MUST BE USED.
2. ALL CONNECTOR ASSEMBLIES SHALL BE OF WATERPROOF CONSTRUCTION, DESIGNED FOR DIRECT BURIAL IN THE EARTH AND EXPOSURE TO SUNLIGHT, AND SHALL BE CAPABLE OF REPEATED DISCONNECTIONS WITHOUT DAMAGE TO THE WATERTIGHT SEALS AND TERMINALS, OR REDUCING THE CONDUCTIVITY BELOW SPECIFICATIONS. IT SHALL BE THE RESPONSIBILITY OF THE CONTRACTOR TO FURNISH CONNECTORS RECOMMENDED FOR THE REQUIRED CABLE SIZES.
3. TYPES L-1 AND L-2 CONNECTORS SHALL BE OF THE FRICTION TYPE, AND SHALL DISCONNECT WITHOUT STRESSING THE CABLE OR ITS ATTACHMENT BEYOND RECOMMENDED LIMITS WHEN AXIAL TENSION IS APPLIED TO THE CABLE OR HOUSING.
4. THE TAP HOUSING OF Y-1, Y-2, AND HEB-JW-RYH CONNECTORS SHALL BE FRICTION-CONNECTED TO Y INSERT BODIES, AND SHALL MEET THE DISCONNECTING REQUIREMENTS OF L-1 AND L-2 CONNECTORS.
5. LOADSIDE TERMINALS OF TYPE Y-1, Y-2, AND HEB-JW-RYH CONNECTORS SHALL BE OF THE SEMI-PERMANENT TYPE, AND SHALL NOT BE DESIGNED TO DISCONNECT UNDER TENSION.
6. EACH CONNECTOR SHALL INCLUDE ALL PARTS AND MATERIALS NECESSARY TO COMPLETE ITS INSTALLATION, SUCH AS FUSES WHEN REQUIRED, LUBRICATING COMPOUND, AND ASSEMBLY DEVICES.
7. CABLE CONNECTOR TO BE USED IN POLE BASE ONLY.
8. MINIMUM OF 8 AMP CARTRIDGE FUSE SHALL BE USED.

DSMR: WAN OPER: WAN SCALE: 500
li-1997/97362/As-Built/s/dgn's/Vol_3/Sh 650-WKA650.dgn Last Rev: 9-18-07 By: gdr

3					
2					
1					
NO.	DATE	REVISION	BY	APP'D	
KANSAS DEPARTMENT OF TRANSPORTATION					
CABLE CONNECTOR DETAIL SHEET					
TE20551					
FHWA APPROVAL	8/16/94	APP'D	LINDA G. VOSS		
DESIGNED	KG	DETAILED	M.KLENSCHMIDT	QUANTITIES	TRACED
DESIGN CK.		DETAIL CK.	KG	QUAN. CK.	TRACE CK.

RECORD DRAWING