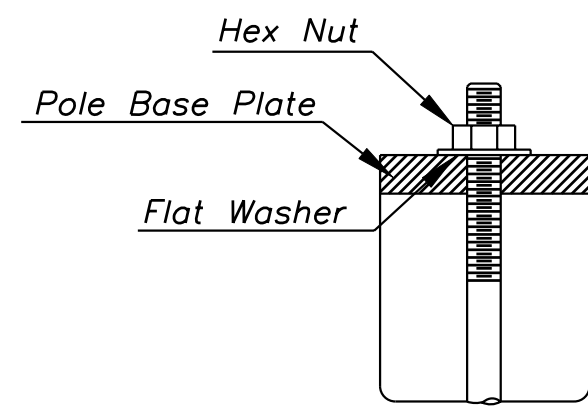
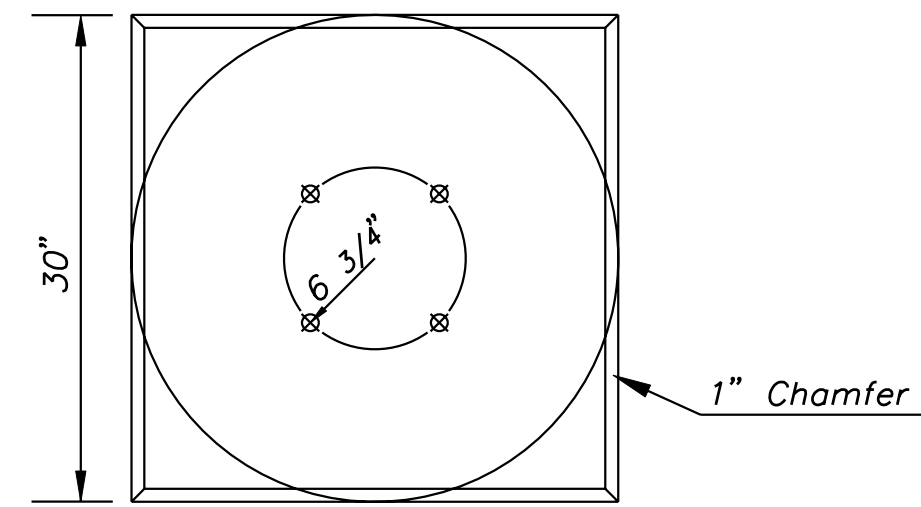


DSNR: RPG OPER: JCP Scale: +/-40
 i:/1997/97362/As-Built/dgn's/Vol_3/Sh 666-pedestal.dgn Last Rev: 9-19-07 By: gdr

Use Keystone "No-Weld Number 1 Anti-Seize Compound" on all bolts & nuts.

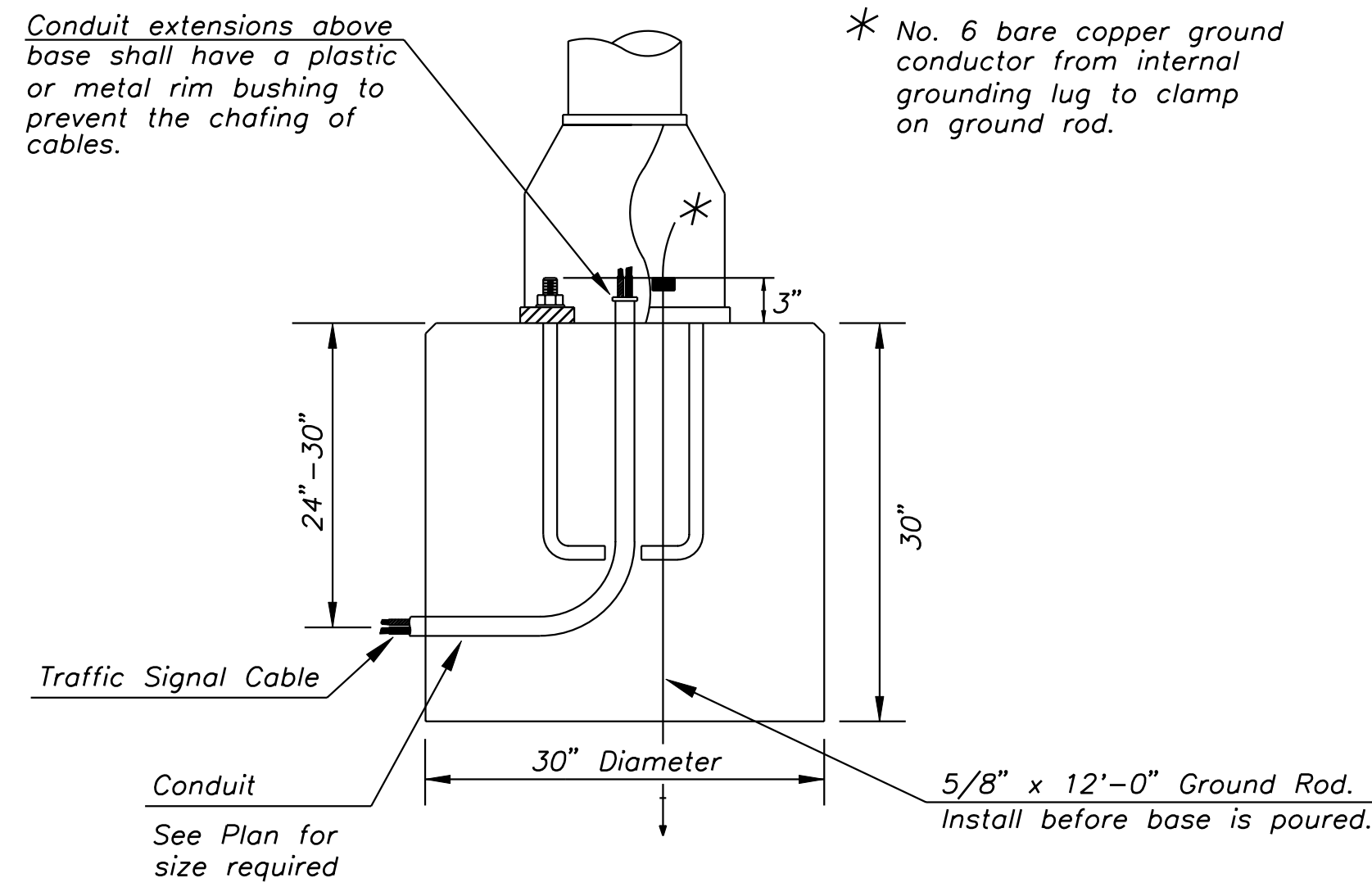


ANCHOR BOLT DETAIL

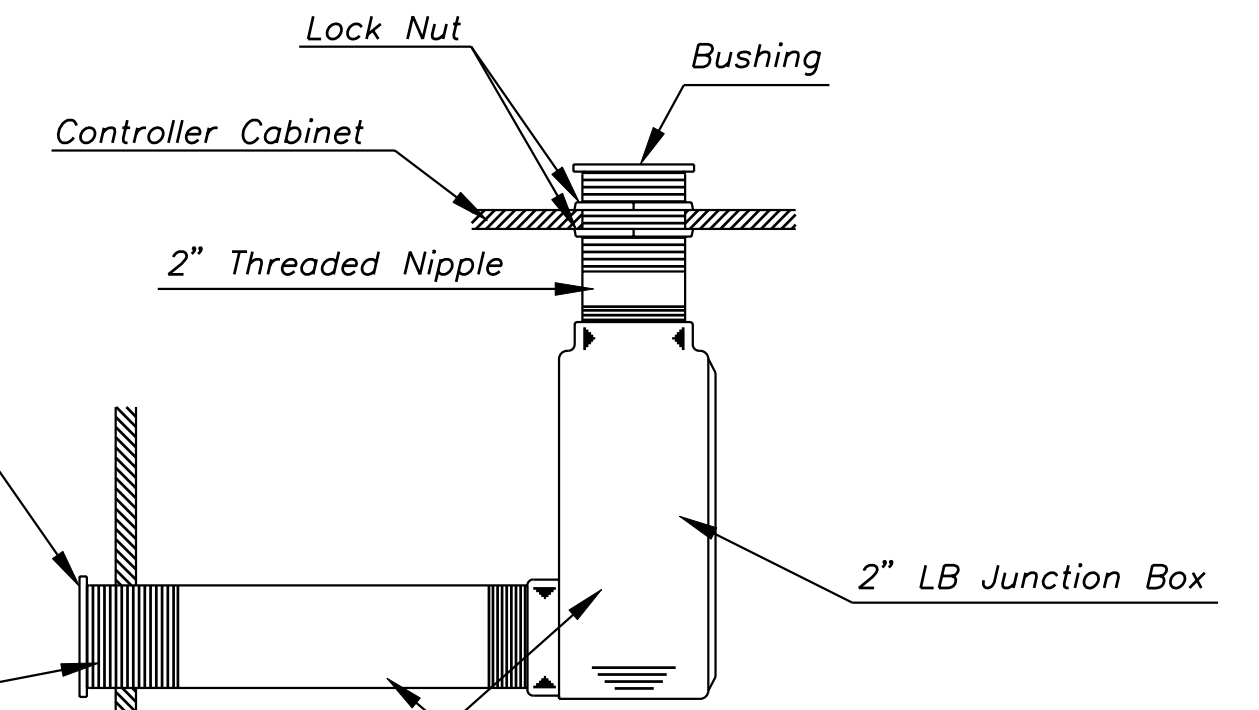


Conduit extensions above base shall have a plastic or metal rim bushing to prevent the chafing of cables.

* No. 6 bare copper ground conductor from internal grounding lug to clamp on ground rod.



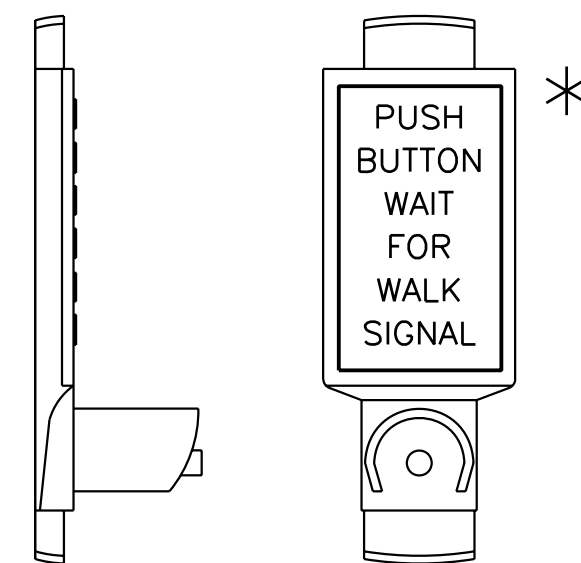
CONCRETE BASE DETAIL



A hole shall be drilled in the signal pole & threaded to receive the 2" nipple.

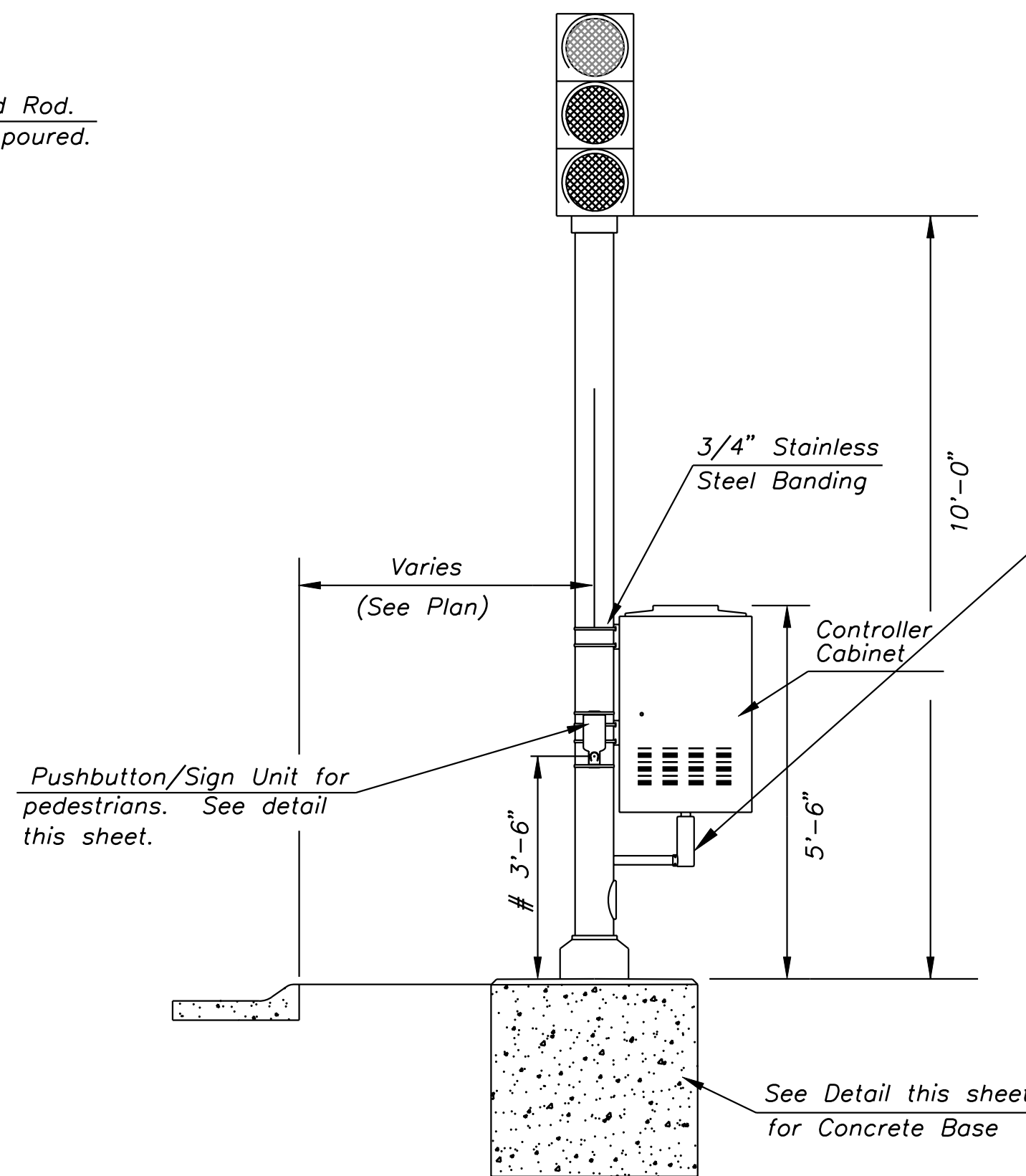
2" Threaded Nipple, Length to be as required to fit Controller Cabinet.

*NOTE: MESSAGE TO BE CAST WITH HOUSING (ONE PIECE)



PEDESTRIAN PUSHBUTTON/SIGN UNIT DETAIL

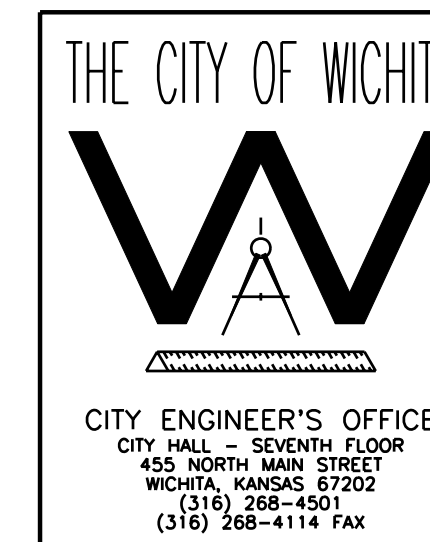
INSTALL PEDESTRIAN PUSHBUTTON UNDERNEATH CORRESPONDING PEDESTRIAN SIGNAL HEAD ON SIDE OF POLE NEAREST CROSSWALK. UNIT SHALL BE FIRMLY ATTACHED TO THE SIDE OF POLE WITH 3/4" STEEL BANDS. SHARP ENDS SHALL BE FOLDED UNDER TO PREVENT INJURY TO PEDESTRIANS.



TRAFFIC SIGNAL PEDESTAL

From Sidewalk Finish Grade to Center of Pushbutton.

RECORD DRAWING



PROJECT DESCRIPTION		
TRAFFIC SIGNAL PEDESTAL & CONCRETE BASE		
DETAIL SHEET		
PROJECT NUMBER		
DRAWN BY: T.M.	SCALE: NO SCALE	REVISED BY:
DATE: April, 2002		DATE:
CITY OF WICHITA		
DEPARTMENT OF PUBLIC WORKS		
DIVISION OF TRAFFIC ENGINEERING		SHEET 666 OF 1122
WM. G. MCKINLEY P.E.	TRAFFIC ENGINEER	