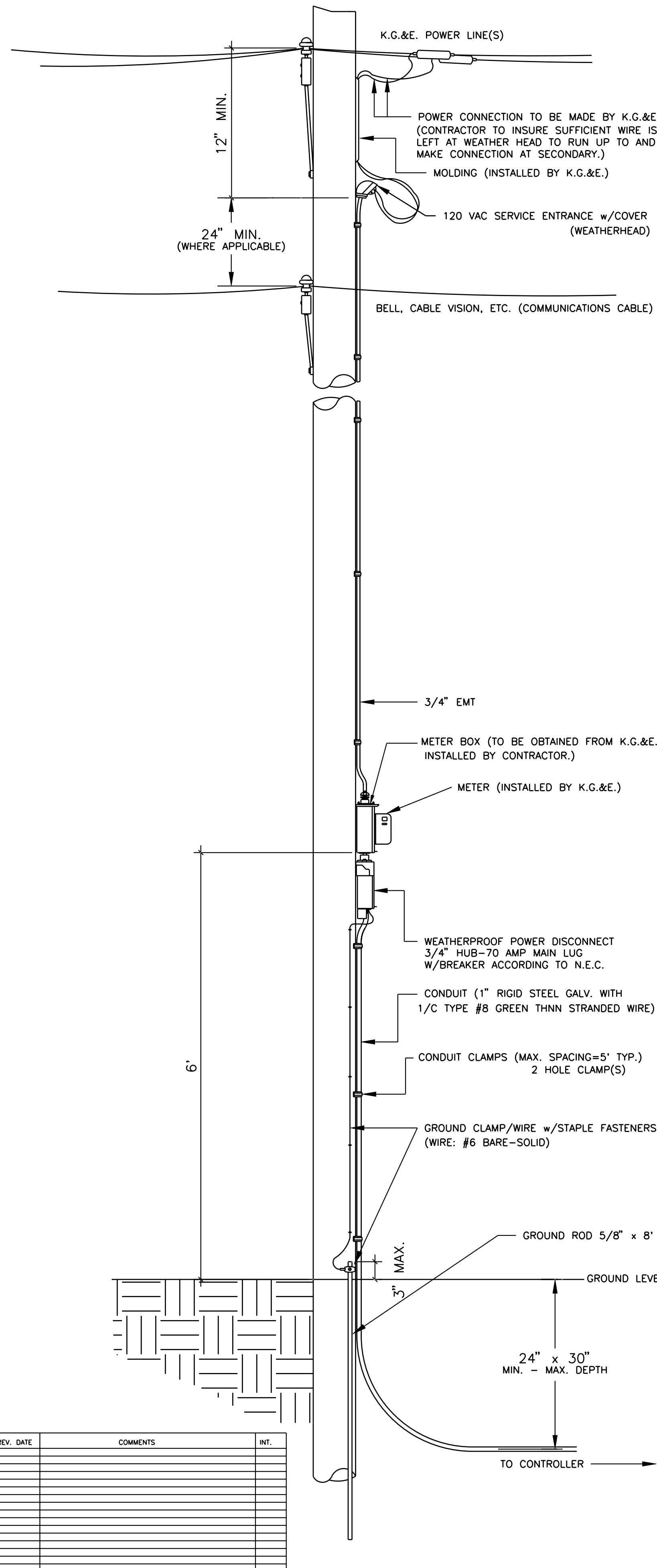
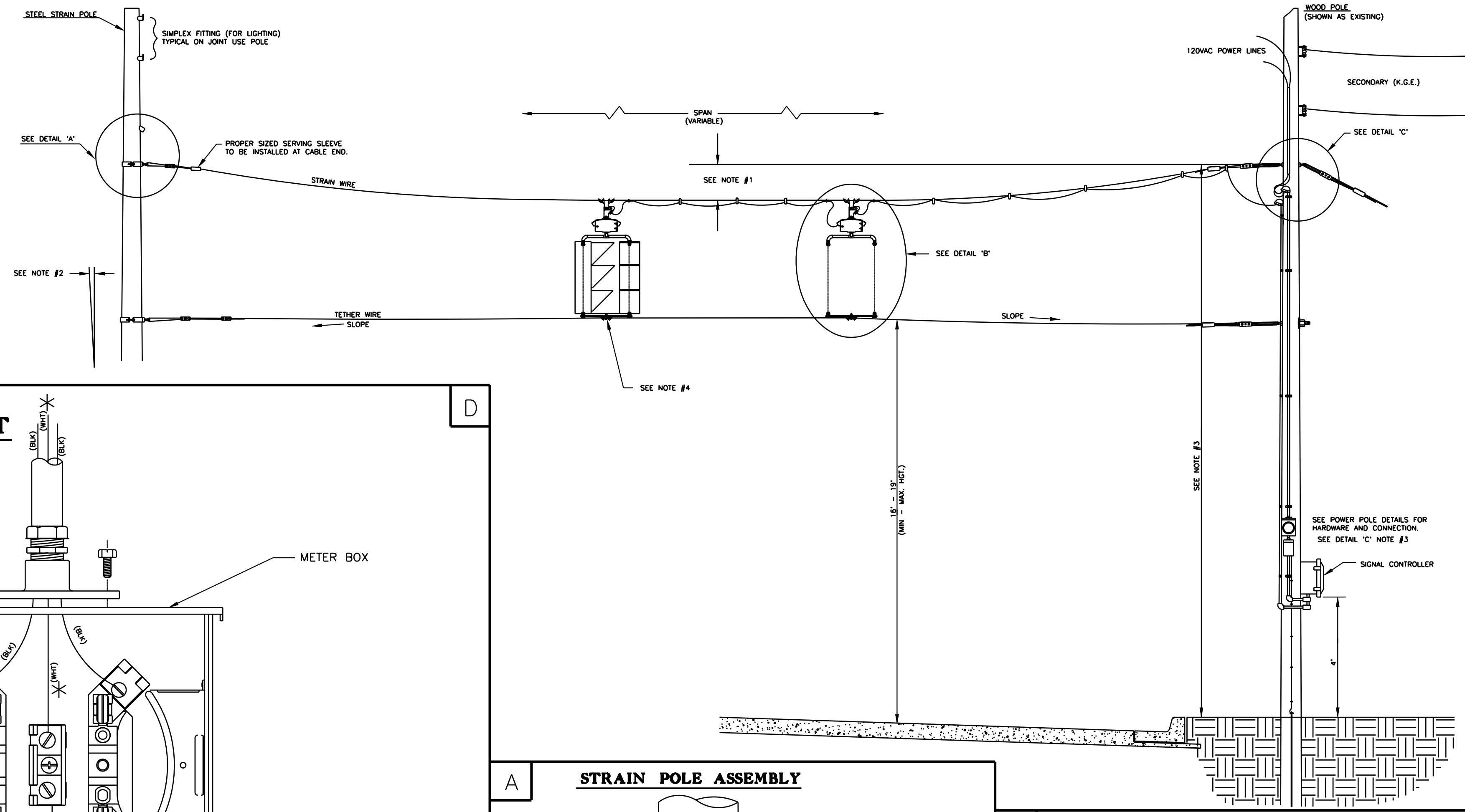


**POWER POLE DETAILS**



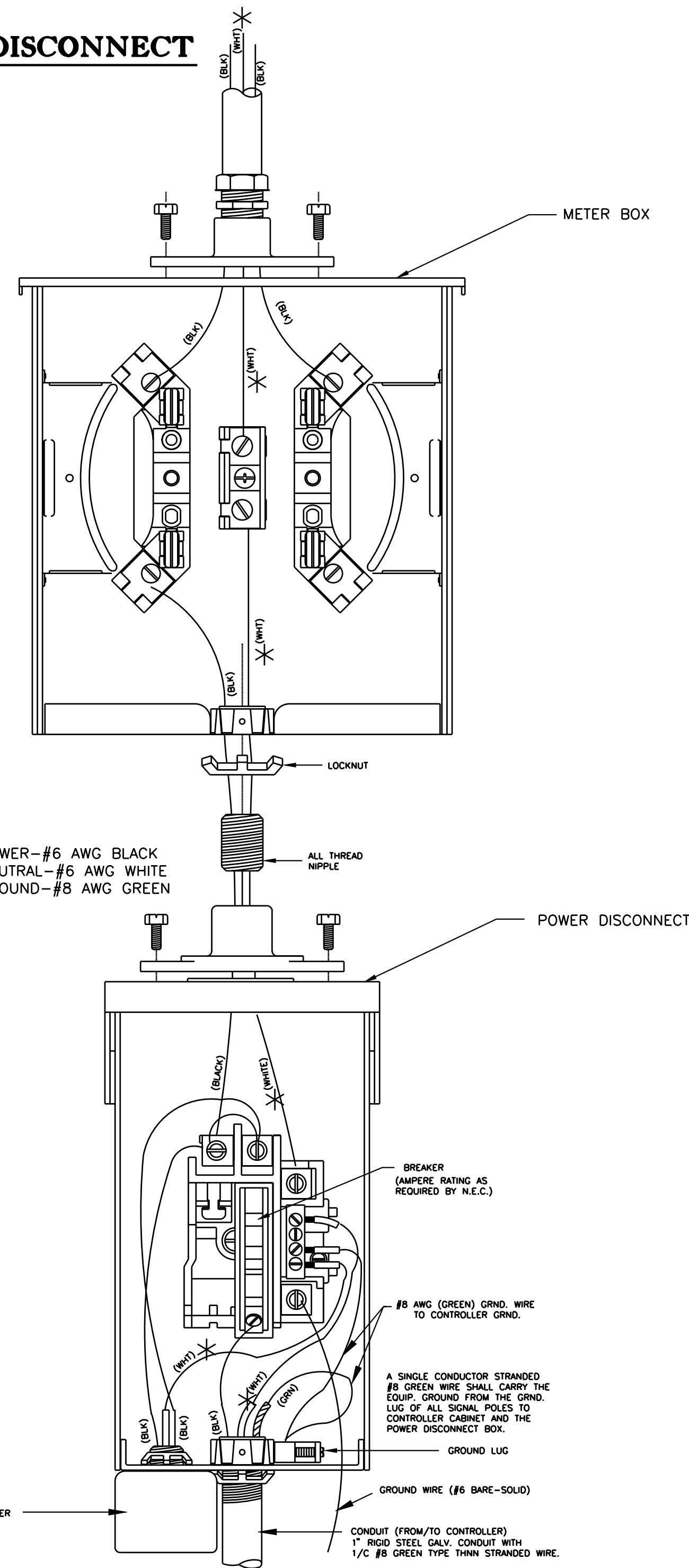
**SPANWIRE ASSEMBLY DETAILS**

1. MAX. SAG = 5% OF SPAN.
2. STANDARD BACKRAKE = 1.5\*
3. HEIGHT OF STRAIN WIRE HOOK-UP TO BE DETERMINED BY FIELD ENGINEER. TRAFFIC SIGNAL CABLE TO BE SECURED TO STRAIN (SPAN) WIRE WEATHERABLE NYLON CABLE HANGERS (12" CTR.) DETAIL 'B'
4. TETHER CLAMP TO BE DESIGNED TO RELEASE UNDER 'HIGH WIND LOAD' TO PERMIT SIGNAL 'FREE SWING'.

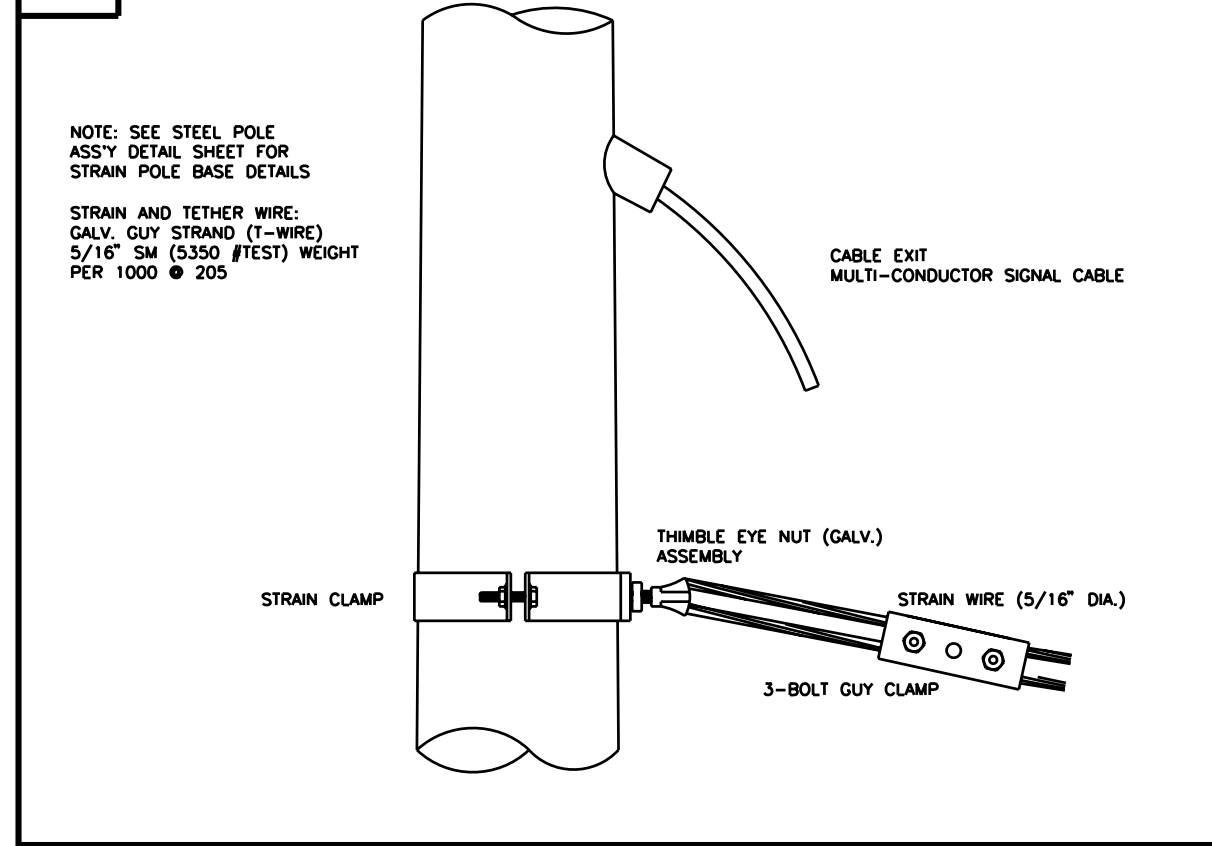


**METER BOX & POWER DISCONNECT DETAILS**

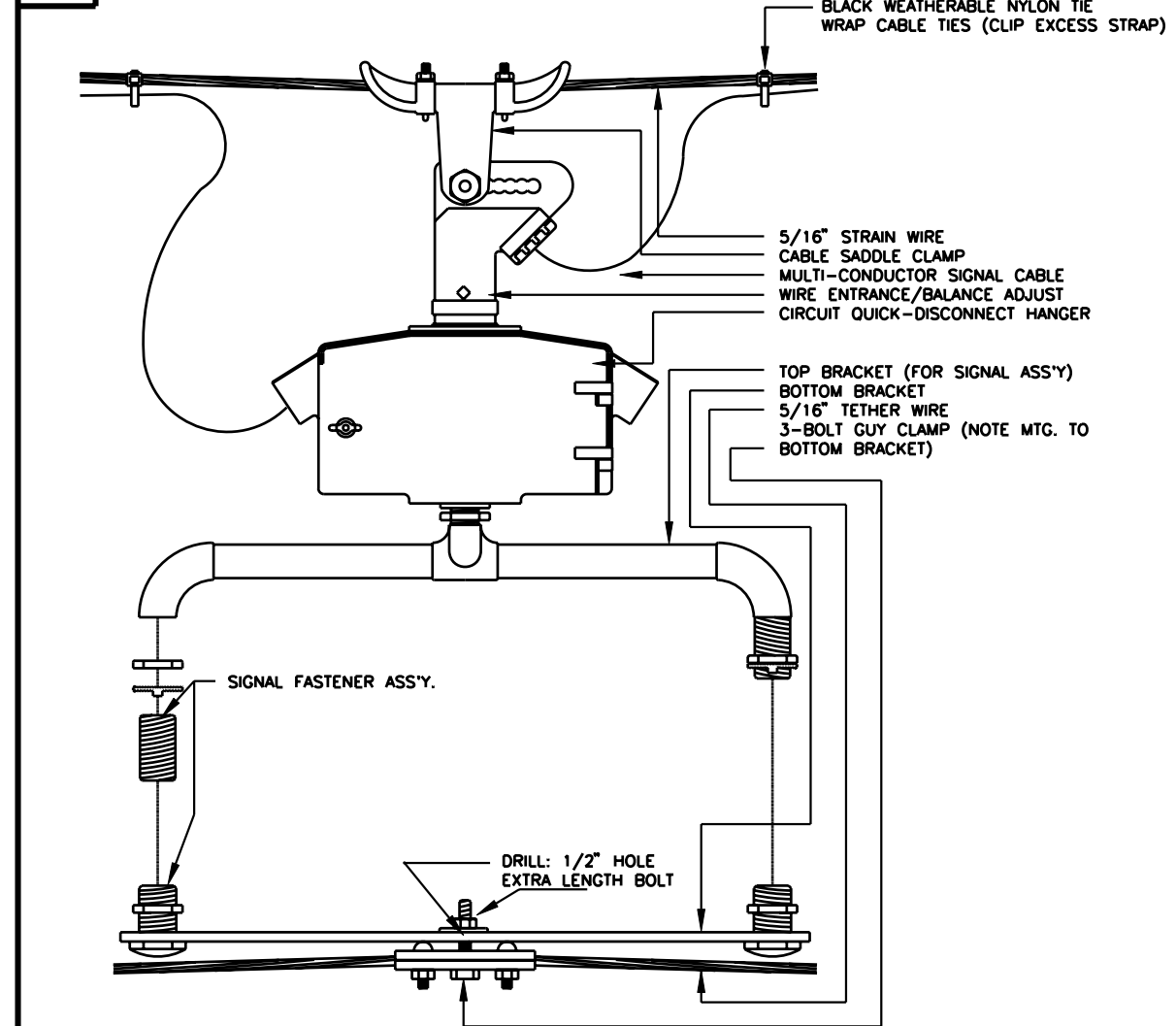
NOTE:  
\* TO BE MARKED WITH WHITE TAPE



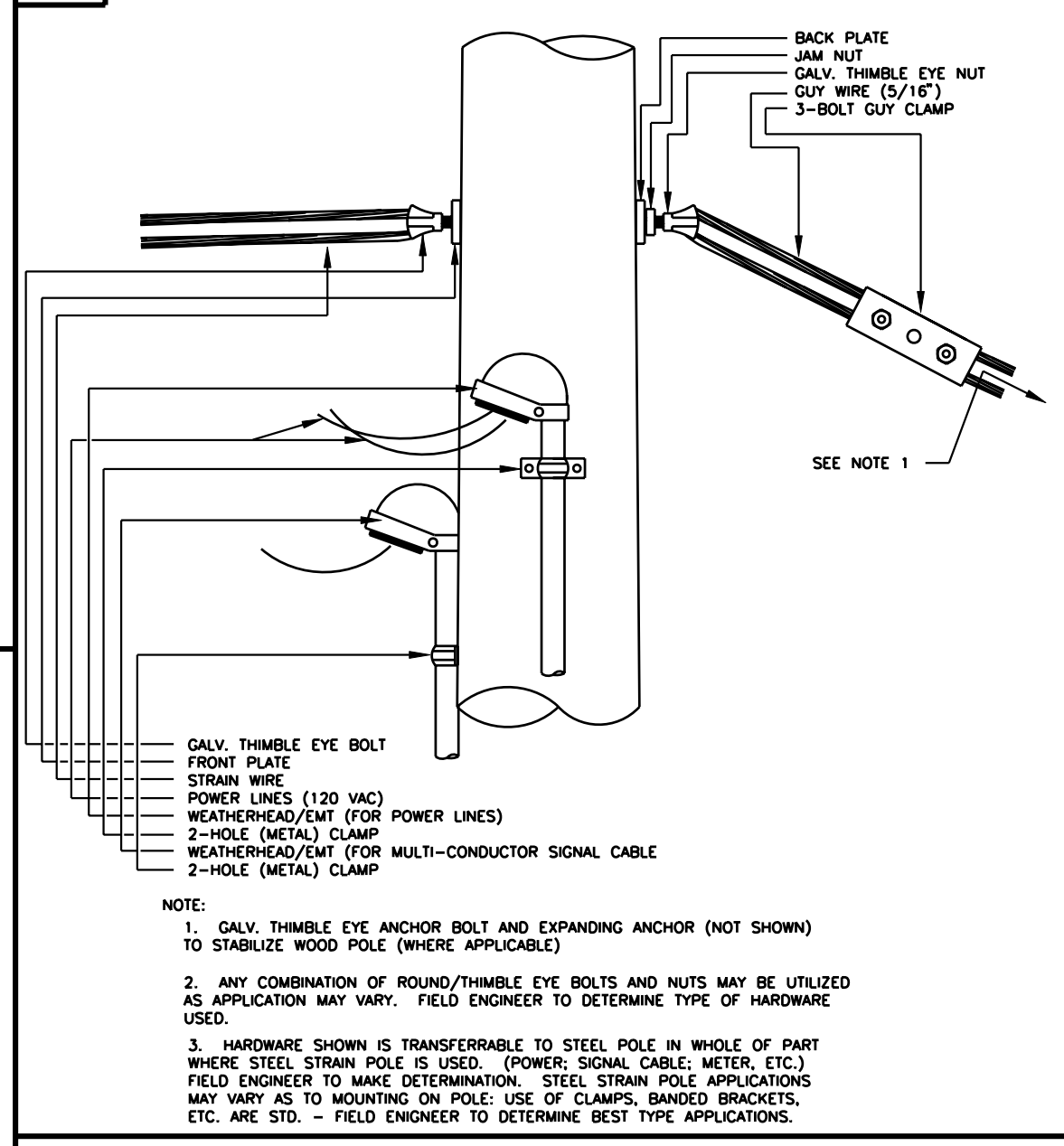
**A STRAIN POLE ASSEMBLY**



**B SIGNAL BRACKET ASSEMBLY DETAILS**



**C WOOD POLE ASSEMBLY DETAILS**



**RECORD DRAWING**

PROJECT DESCRIPTION		
<b>POWER POLE AND SPAN POLE ASSEMBLY DETAILS</b>		
PROJECT NUMBER		
DRAWN BY: T.M.	APPROVED BY:	REVISION BY:
DATE: April, 2002	DATE:	DATE:
CITY OF WICHITA DEPARTMENT OF PUBLIC WORKS		
DIVISION OF TRAFFIC ENGINEERING		SCALE
WM. G. MCKINLEY P.E. TRAFFIC ENGINEER		NO SCALE X

DSNR: RFG OPER: JGP Scale: +/-40  
 i:/1997/97362/As-Builds/dgr's/Vol\_3/Sh 667-ppspdtls.dgn Last Rev: 9-19-07 By: gdr