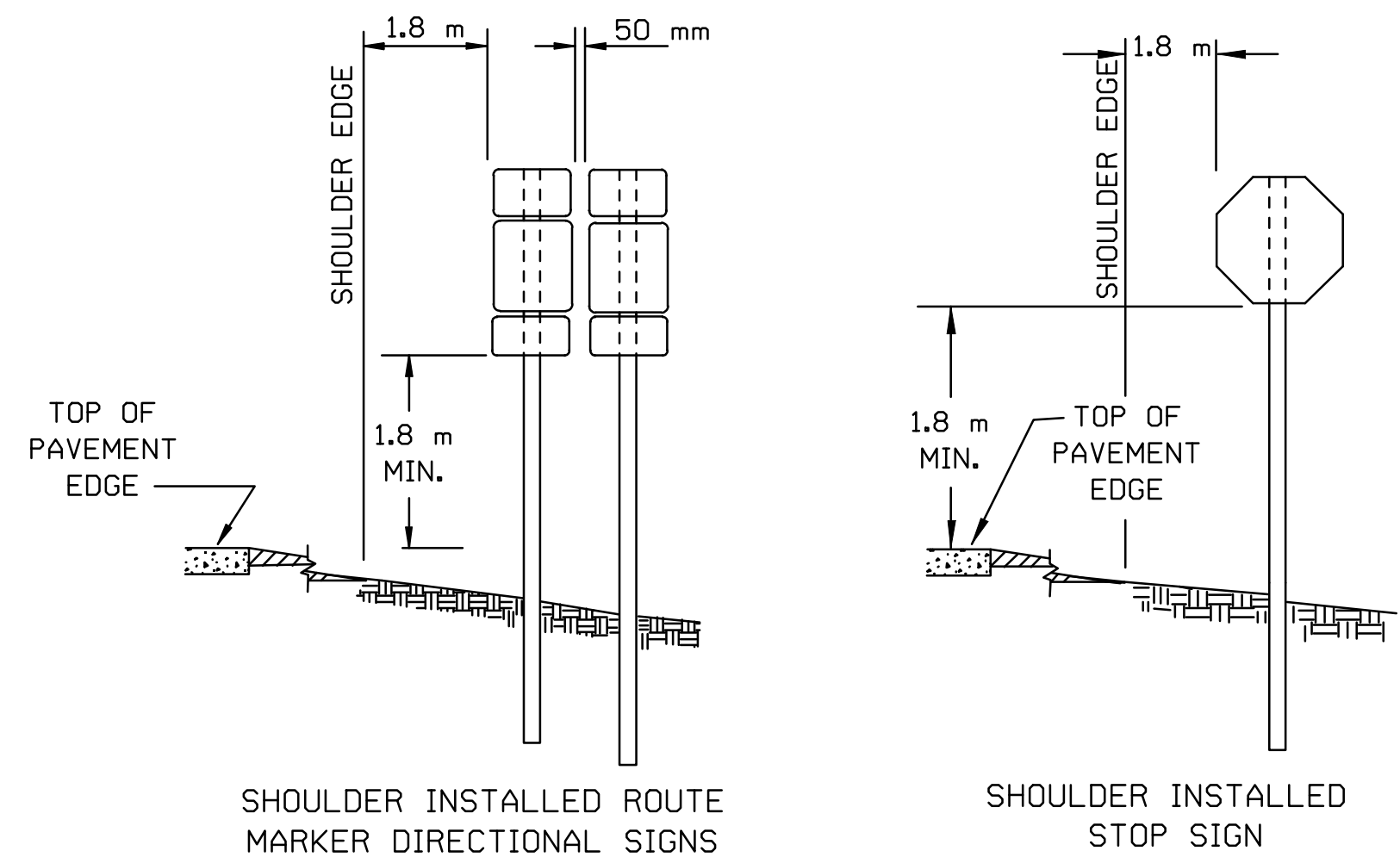
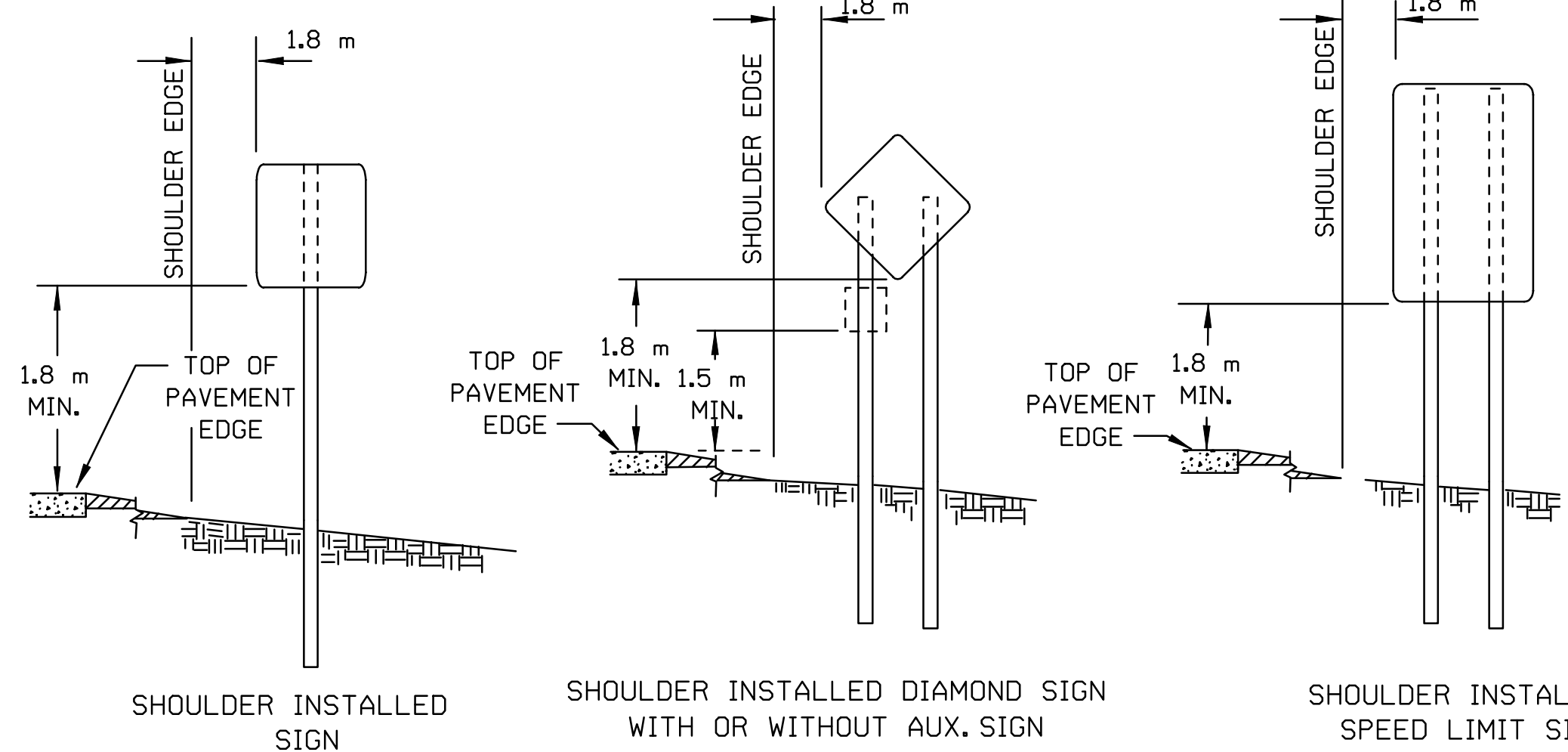


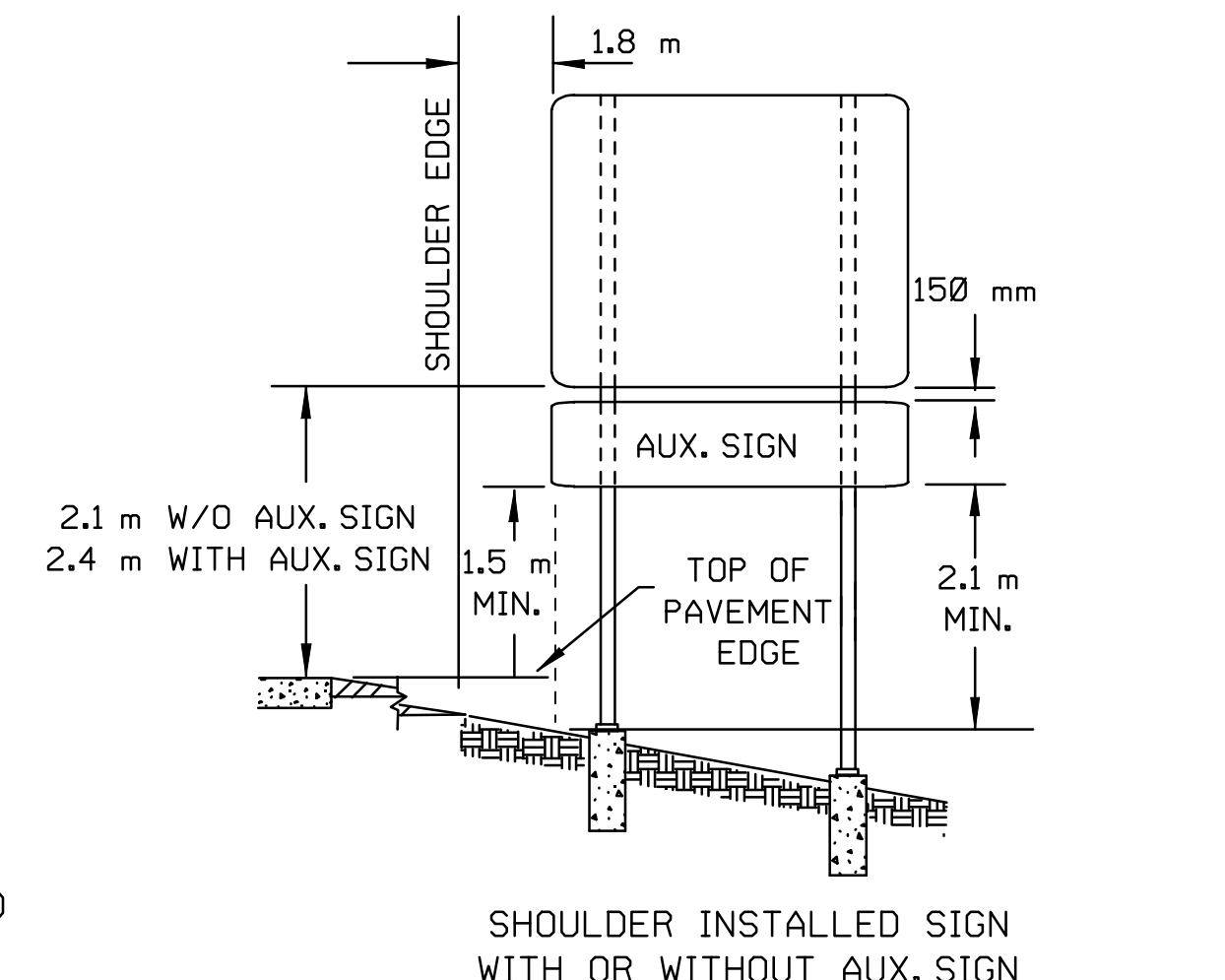
FHWA REGION NO.	STATE	PROJECT NO.	YEAR	SHEET NO.	TOTAL SHEETS
7	KANSAS	54-87 K-6657-01	2002	672	1122



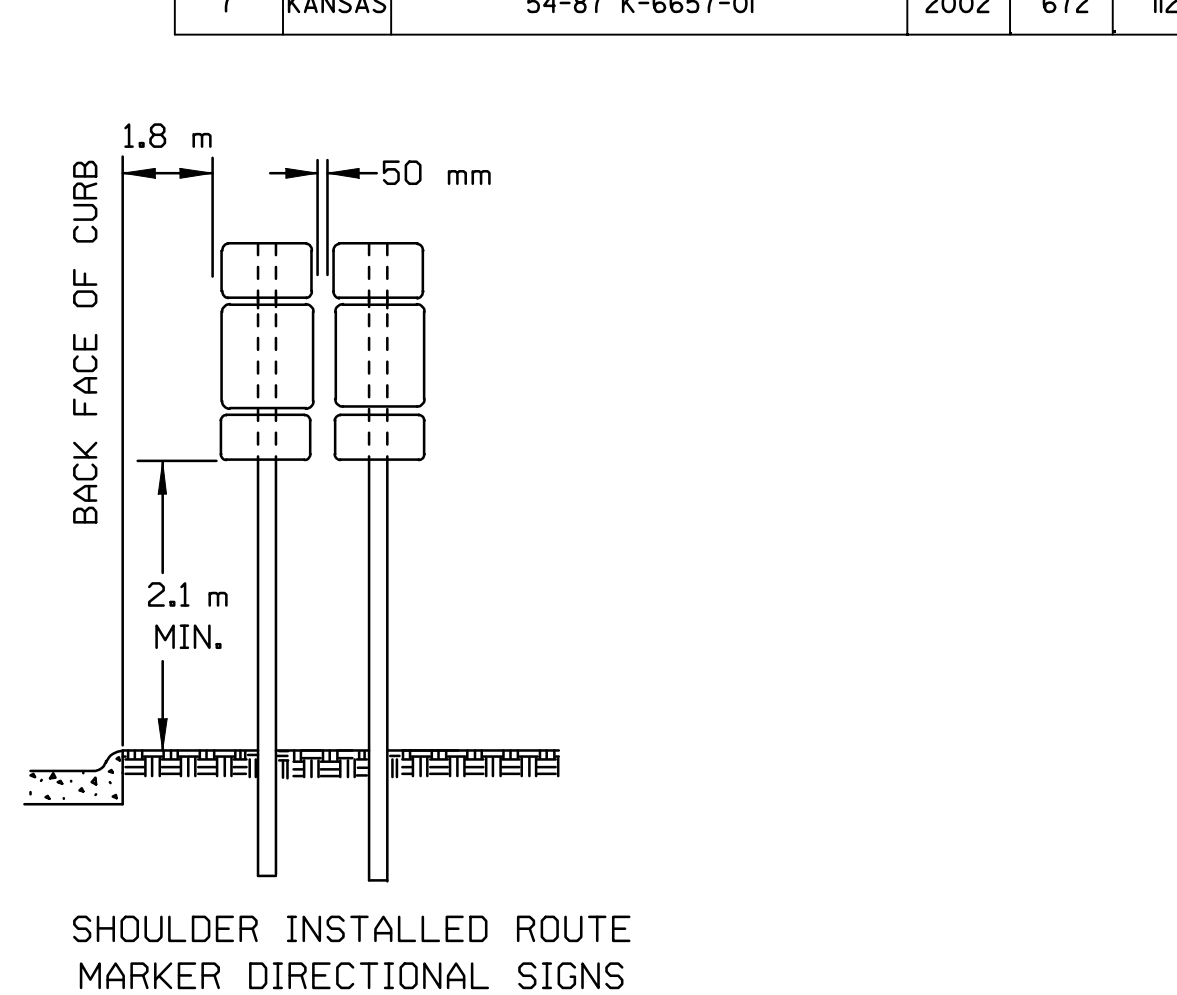
SHOULDER INSTALLED ROUTE MARKER DIRECTIONAL SIGNS
SHOULDER INSTALLED STOP SIGN



SHOULDER INSTALLED SIGN
SHOULDER INSTALLED DIAMOND SIGN WITH OR WITHOUT AUX. SIGN
SHOULDER INSTALLED SPEED LIMIT SIGN



SHOULDER INSTALLED SIGN WITH OR WITHOUT AUX. SIGN



SHOULDER INSTALLED ROUTE MARKER DIRECTIONAL SIGNS

DESIRABLE LOCATIONS FOR MAINLINE SIGNING
LATERAL AND LONGITUDINAL LOCATION

THE LATERAL DISTANCE FOR ADVANCE GUIDE, EXIT DIRECTION, SUPPLEMENTAL, MILEAGE, AND GENERAL MOTORIST SIGNS SHALL BE 12 m TO 18 m FROM PAVEMENT EDGE TO NEAR EDGE OF SIGN WITH A MINIMUM OF 3 m FROM THE OUTSIDE EDGE OF SIGN TO THE RIGHT OF WAY LINE. THE MINIMUM DISTANCE BETWEEN THESE SIGNS SHALL BE APPROXIMATELY 250 m . THE LONGITUDINAL ADJUSTMENT FROM PLAN STATION FOR ALL ABOVE MENTIONED SIGNS WITH THE EXCEPTION OF EXIT DIRECTION AND MILEAGE SIGNS SHALL BE DETERMINED BY THE ENGINEER. THE LONGITUDINAL ADJUSTMENT FROM PLAN STATION FOR THE EXIT DIRECTION SIGN SHALL NOT EXCEED 30 m . THE LONGITUDINAL ADJUSTMENT FROM PLAN STATION FOR THE MILEAGE SIGN SHALL NOT EXCEED 800 m .

THE LATERAL DISTANCE FOR THE MERGE SIGN SHOULD BE THE NORMAL SHOULDER INSTALLATION WITH THE LONGITUDINAL ADJUSTMENT FROM PLAN STATION NOT TO EXCEED 15 m .

THE ROUTE MARKER ASSEMBLY AND SPEED LIMIT SIGNS SHALL BE 12 m TO 18 m FROM PAVEMENT EDGE TO NEAR EDGE OF SIGN WITH A MINIMUM OF 3 m FROM THE OUTSIDE EDGE OF SIGN TO THE RIGHT OF WAY LINE. THE MINIMUM DISTANCE BETWEEN THESE TWO SIGNS SHALL BE APPROXIMATELY 300 m . THE LONGITUDINAL ADJUSTMENT FROM PLAN STATION TO BE DETERMINED BY THE ENGINEER. WHEN USED IN AN INTERCHANGE AREA, THESE SIGNS SHOULD BE THE NORMAL SHOULDER INSTALLATION WITH THE LONGITUDINAL ADJUSTMENT FROM PLAN STATION NOT TO EXCEED 15 m .

DESIRABLE LOCATIONS FOR RAMP SIGNING
LATERAL AND LONGITUDINAL LOCATION

THE LATERAL LOCATION FOR ALL SIGNS SHALL BE THE NORMAL SHOULDER INSTALLATION. THE LONGITUDINAL ADJUSTMENT FROM THE PLAN STATION TO BE DETERMINED BY THE ENGINEER.

DESIRABLE LOCATIONS FOR SIDE ROAD SIGNING
LATERAL AND LONGITUDINAL LOCATION

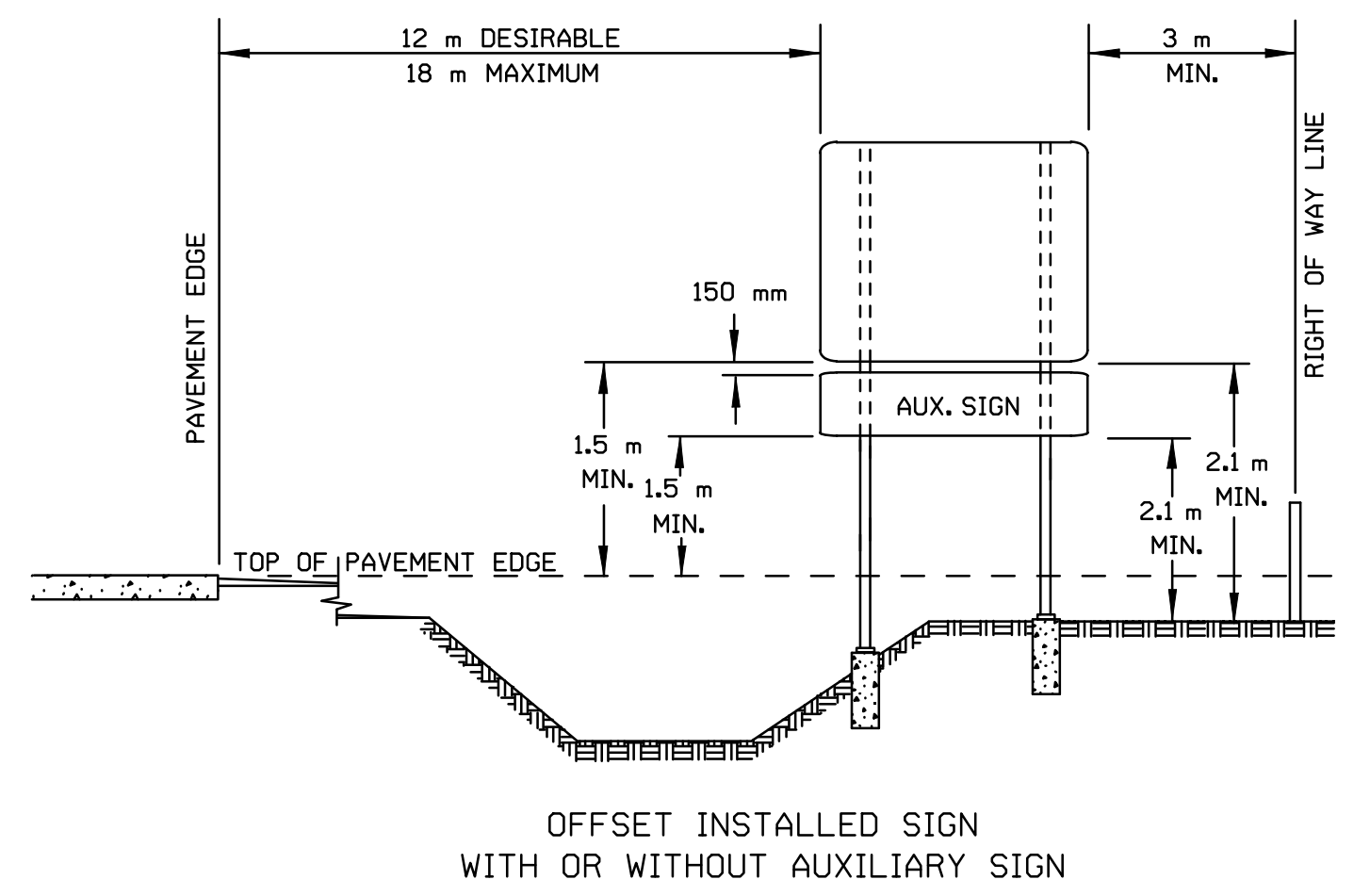
THE LATERAL LOCATION FOR ALL SIGNS, EXCEPT THE E4-1a SIGN, SHALL BE THE NORMAL SHOULDER INSTALLATION. THE LATERAL LOCATION FOR THE E4-1a SIGN SHALL BE 20' FROM PAVEMENT EDGE TO NEAR EDGE OF SIGN. THE LONGITUDINAL ADJUSTMENT FROM PLAN STATION FOR ALL SIGNS TO BE DETERMINED BY THE ENGINEER. WHEN THERE IS NO SHOULDER, THE VERTICAL CLEARANCE FROM THE BOTTOM OF THE SIGN TO THE NEAR EDGE OF THE TRAVELING SURFACE SHALL BE AT LEAST 1.8 m, WITH A MINIMUM LATERAL CLEARANCE OF 3.6 m .

VARIATION OF SIGN MOUNTING HEIGHT AND LATERAL CLEARANCE

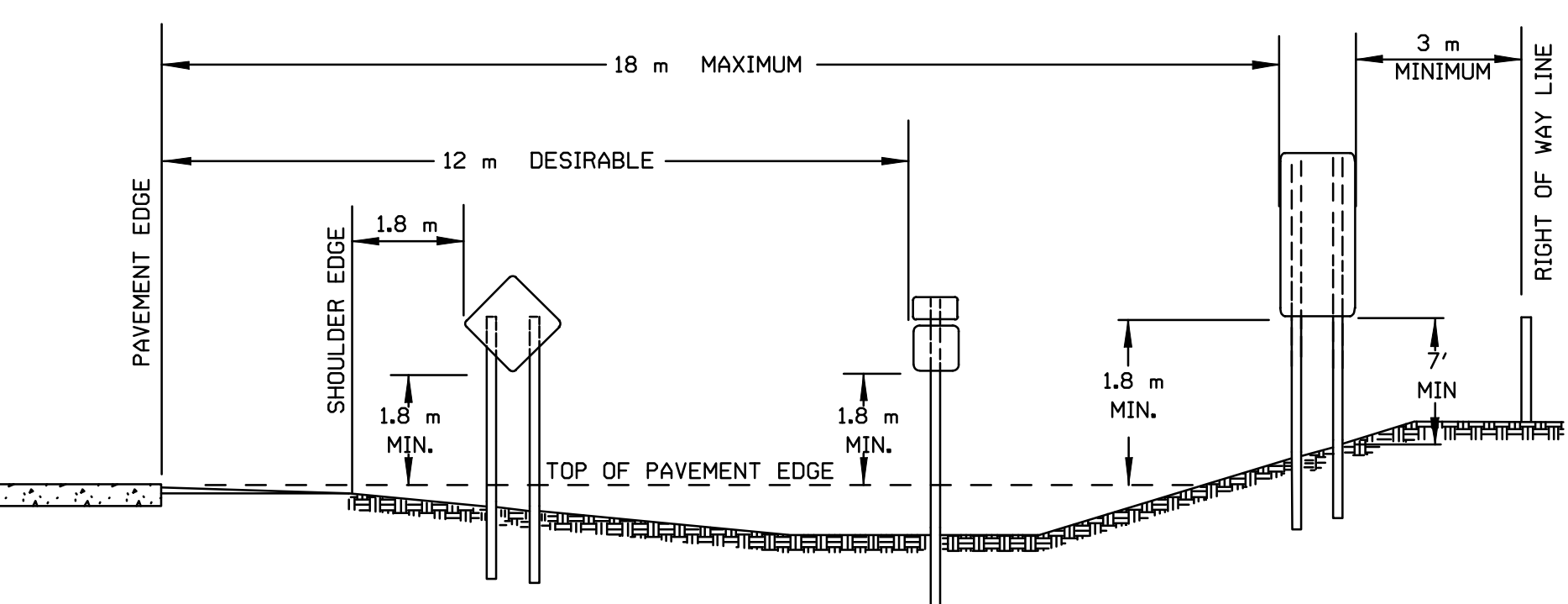
IN BUSINESS, COMMERCIAL, AND RESIDENTIAL DISTRICTS WHERE PARKING AND/OR PEDESTRIAN MOVEMENT IS LIKELY TO OCCUR OR WHERE THERE ARE OTHER OBSTRUCTIONS TO VIEW, THE VERTICAL CLEARANCE TO THE BOTTOM OF THE SIGN SHALL BE AT LEAST 2.1 m, WITH A MINIMUM LATERAL CLEARANCE OF 600 mm .

ERECTION OF SIGNS BEHIND GUARD FENCE

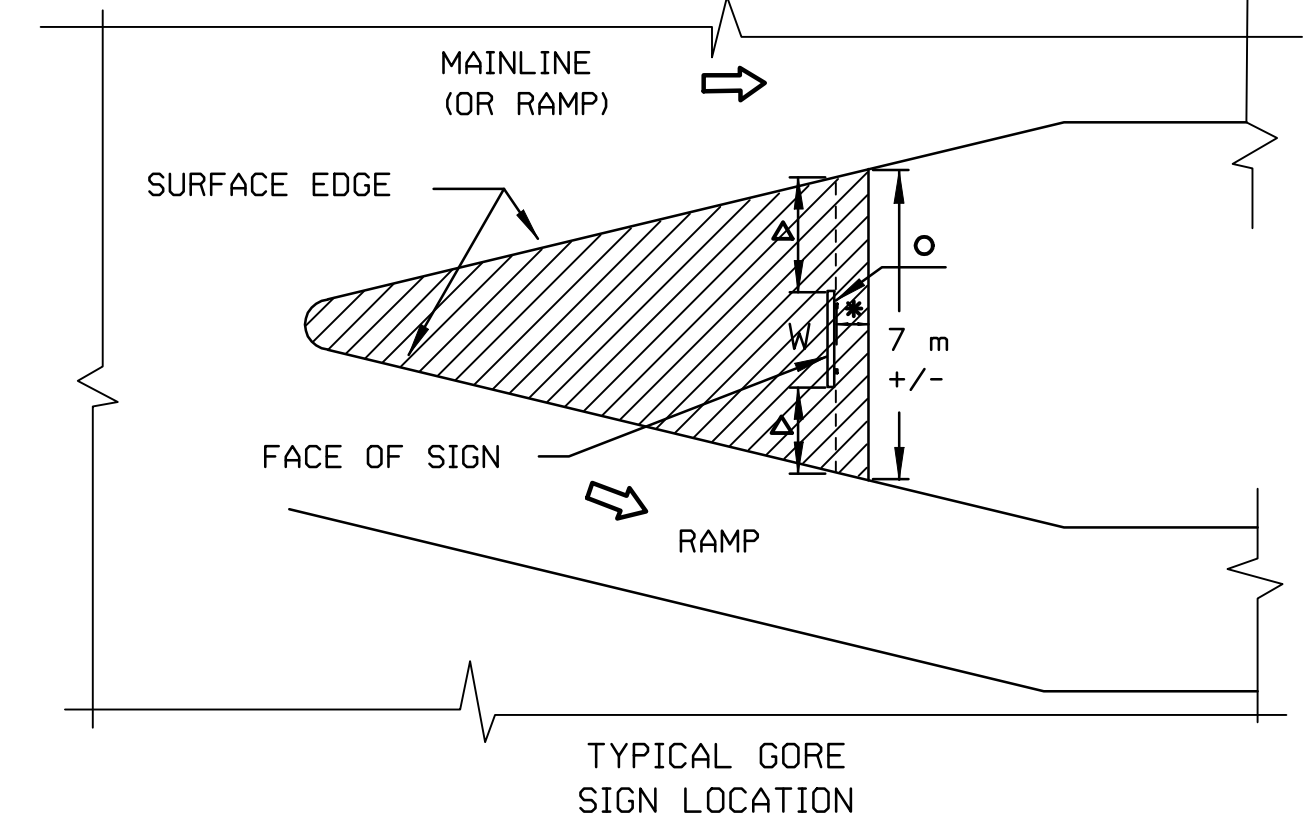
GUARD FENCE IS TO BE UTILIZED AS MUCH AS POSSIBLE FOR FINAL PLACEMENT OF SIGNS. USING THE LONGITUDINAL LOCATION CRITERIA FOR THE SIGNS IDENTIFIED ABOVE, ANY SIGN MAY BE ADJUSTED FROM THE PLAN STATION TO BE ERECTED BEHIND GUARD FENCE. NO SIGNS SHALL BE LOCATED BETWEEN 30 m IN ADVANCE OF THE NOSE OF THE GUARD FENCE AND 15 m BEHIND THE THE NOSE OF THE GUARD FENCE. IN NO CASE IS THE ROADSIDE END OF THE SIGN(S) TO EXTEND BEYOND THE BACK SIDE OF THE GUARD FENCE AND NO POST SHALL BE LOCATED CLOSER THAN 1.5 m FROM THE FACE OF THE GUARD FENCE.



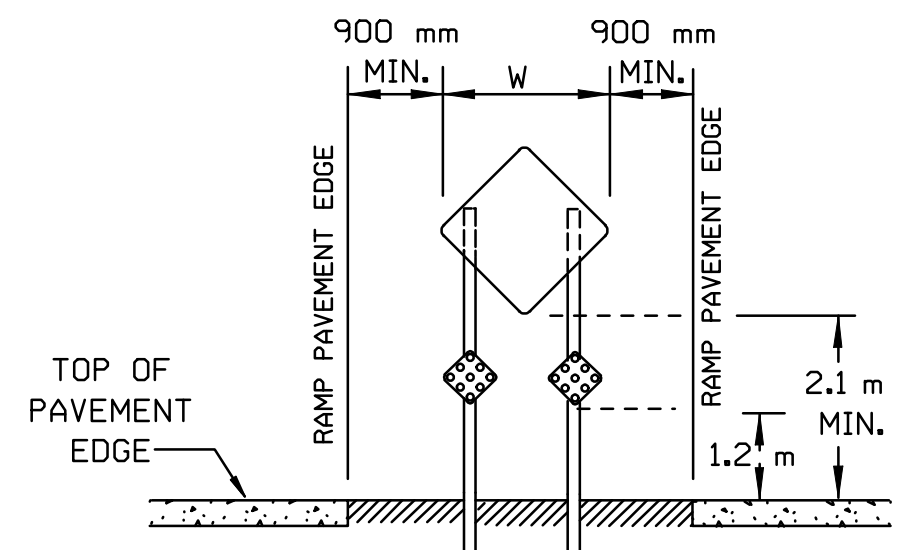
OFFSET INSTALLED SIGN WITH OR WITHOUT AUXILIARY SIGN



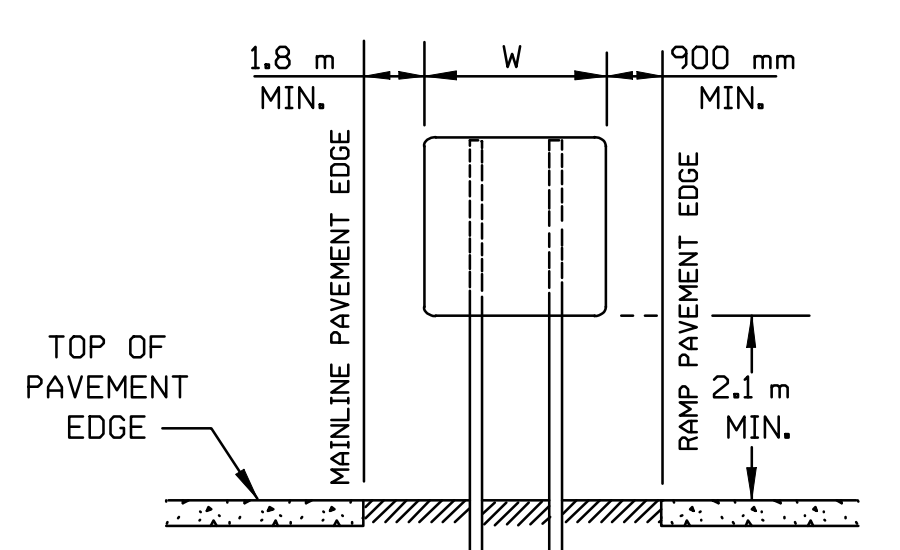
MAINLINE INSTALLED REGULATORY SIGNS, WARNING SIGNS OR ROUTE MARKERS



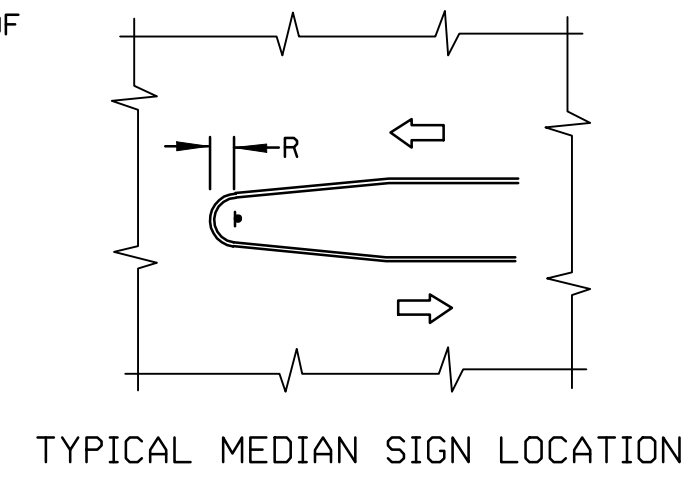
TYPICAL GORE SIGN LOCATION



GORE INSTALLED SIGN WITH TWO T1/OM'S (BETWEEN TWO RAMP)

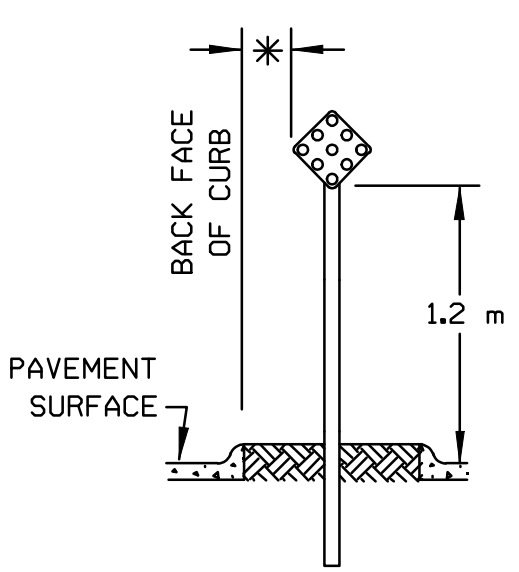


GORE INSTALLED SIGN (BETWEEN MAINLINE AND RAMP)

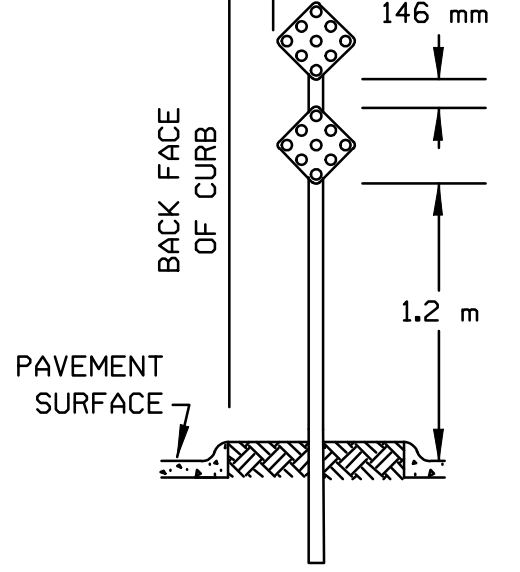


TYPICAL MEDIAN SIGN LOCATION

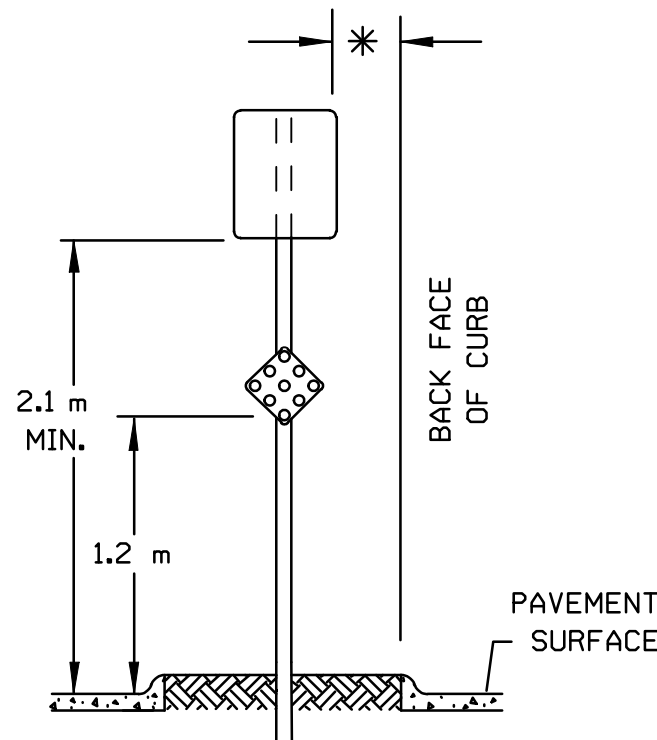
* NOTE: A RAISED MEDIAN INSTALLED SIGN SHALL NOT EXTEND BEYOND THE BACK FACE OF CURB. NORMAL CLEARANCE SHOULD BE 600 mm FROM SIGN EDGE TO BACK FACE OF CURB.



MEDIAN INSTALLED ONE T1/OM



MEDIAN INSTALLED TWO T1/OM



MEDIAN INSTALLED SIGN WITH ONE T1/OM

- o THE STATION SHOWN ON THE PLAN SHEETS IS AN APPROXIMATED STATION. THE LONGITUDINAL ADJUSTMENT FROM PLAN STATION TO BE DETERMINED BY THE ENGINEER.
- W SIGN WIDTH
- Δ FOR LATERAL POSITIONING, SEE SKETCHES OF GORE INSTALLED SIGN
- * MIN. OF 900 mm CLEAR DISTANCE
- ▨ PAVED AREA

3					
2					
1	5-8-96	CHANGED GUARD FENCE NOTE	TCP	NAB	
NO.	DATE	REVISION	BY	APP'D	

KANSAS DEPARTMENT OF TRANSPORTATION
TYPICAL HEIGHTS, LATERAL LOCATIONS,
AND LONGITUDINAL ADJUSTMENTS FOR
SIGN INSTALLATION (US OR K-ROUTE)
TE410ASI 9-1-94

FHWA APPROVAL	8-1-96	APP'D	Nelda A. Buckley
DESIGNED	KH	DETAILED	KH
DESIGN CK.	DETAIL CK.	QUANTITIES	TRACED KH
			TRACE CK.

RECORD DRAWING

DSNR: OPER: SVB SCALE: 1:1997/97362/As-Built/s/dgn/s/Vol.4/Sh 672-KDOT.-STD.-TE410ASI.dgn Last Rev: 9-20-07 By: gdr