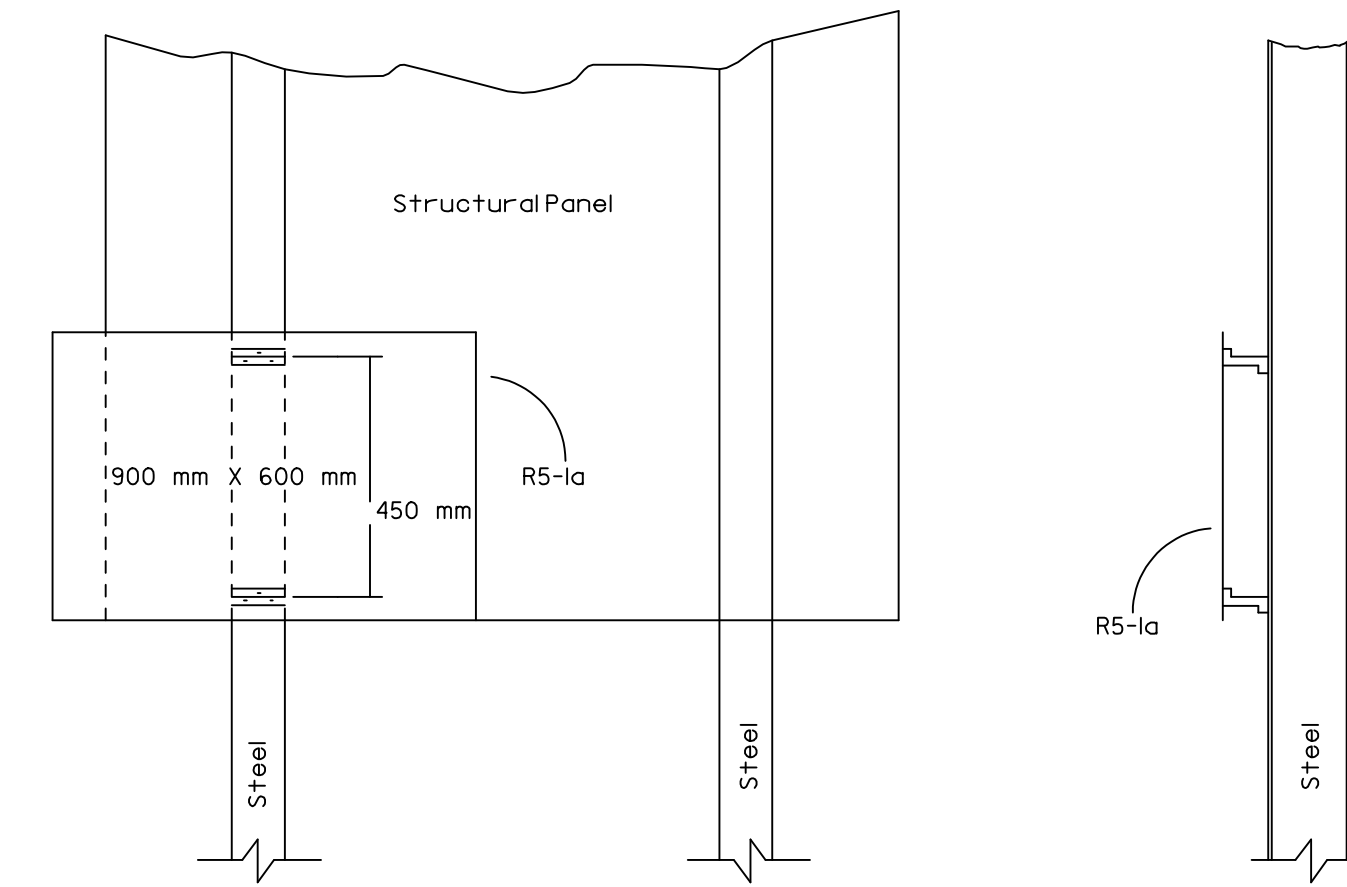
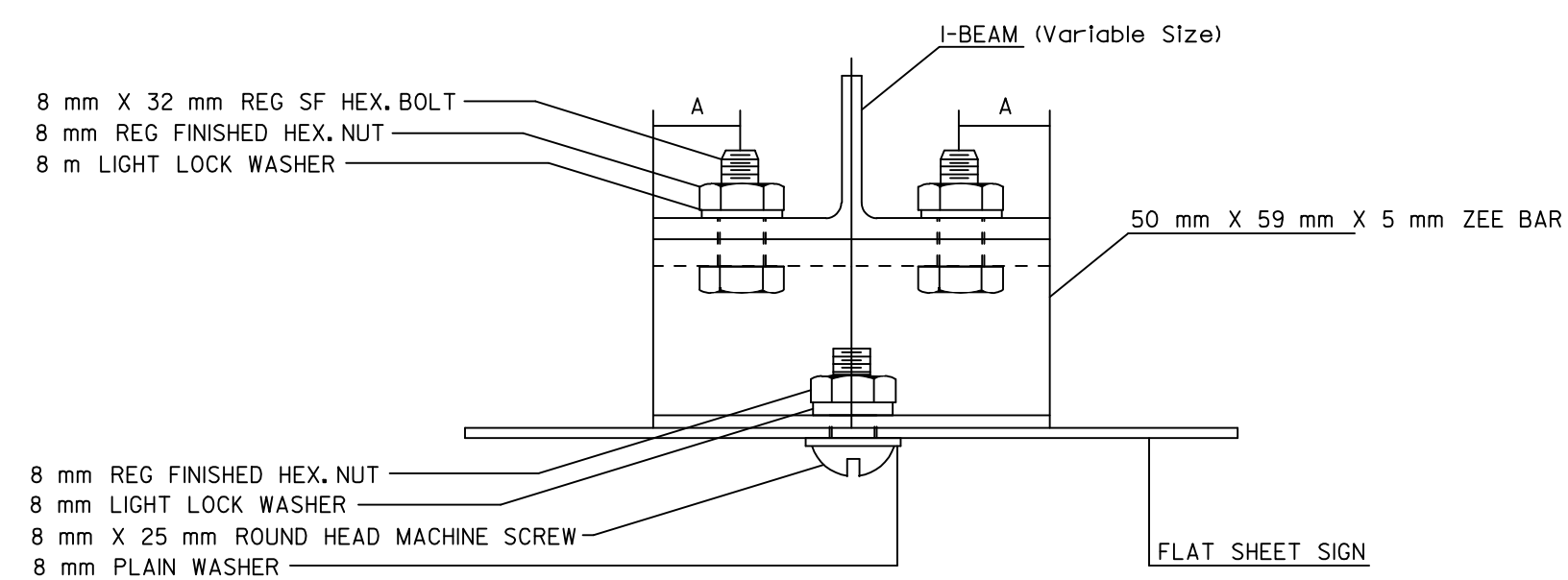
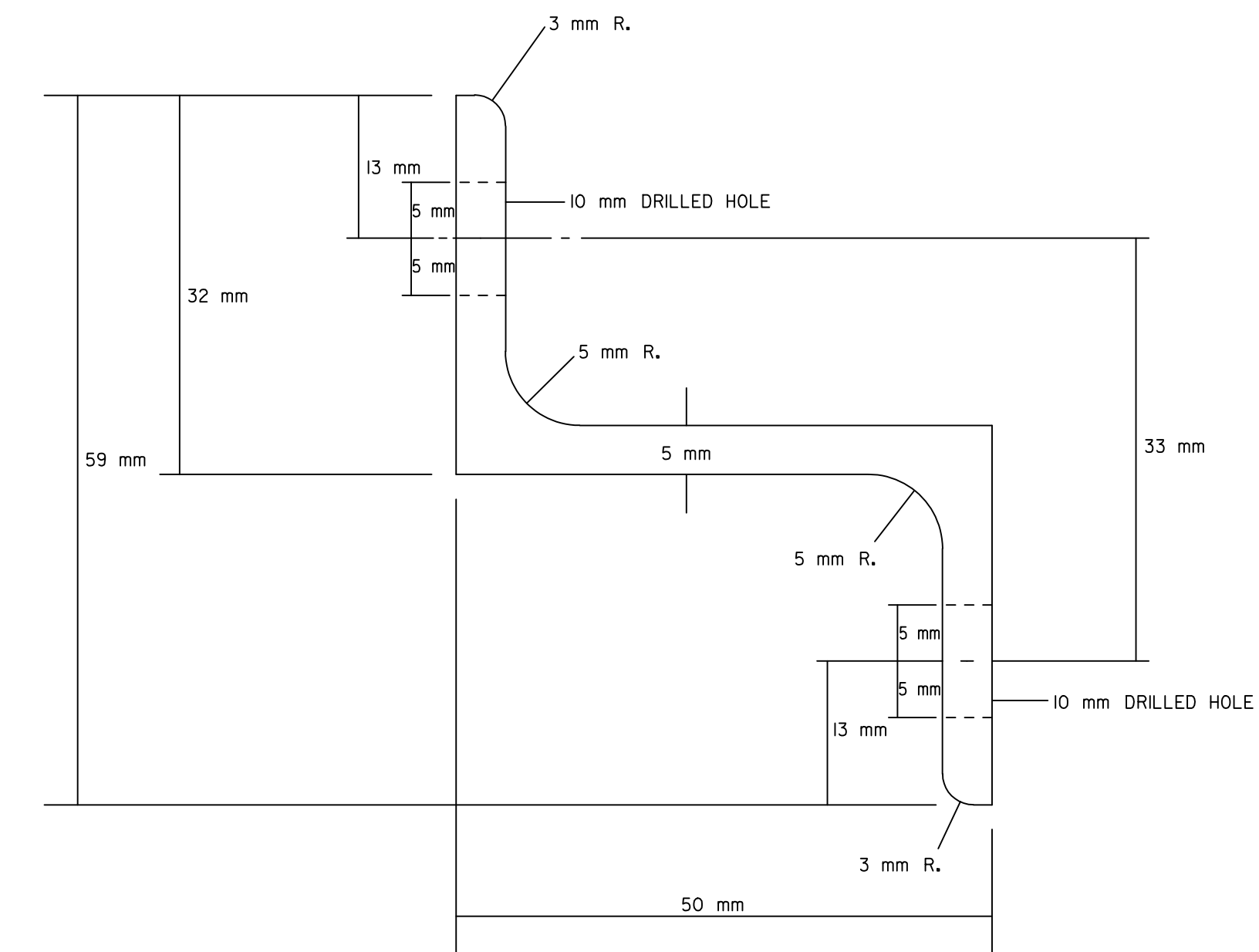


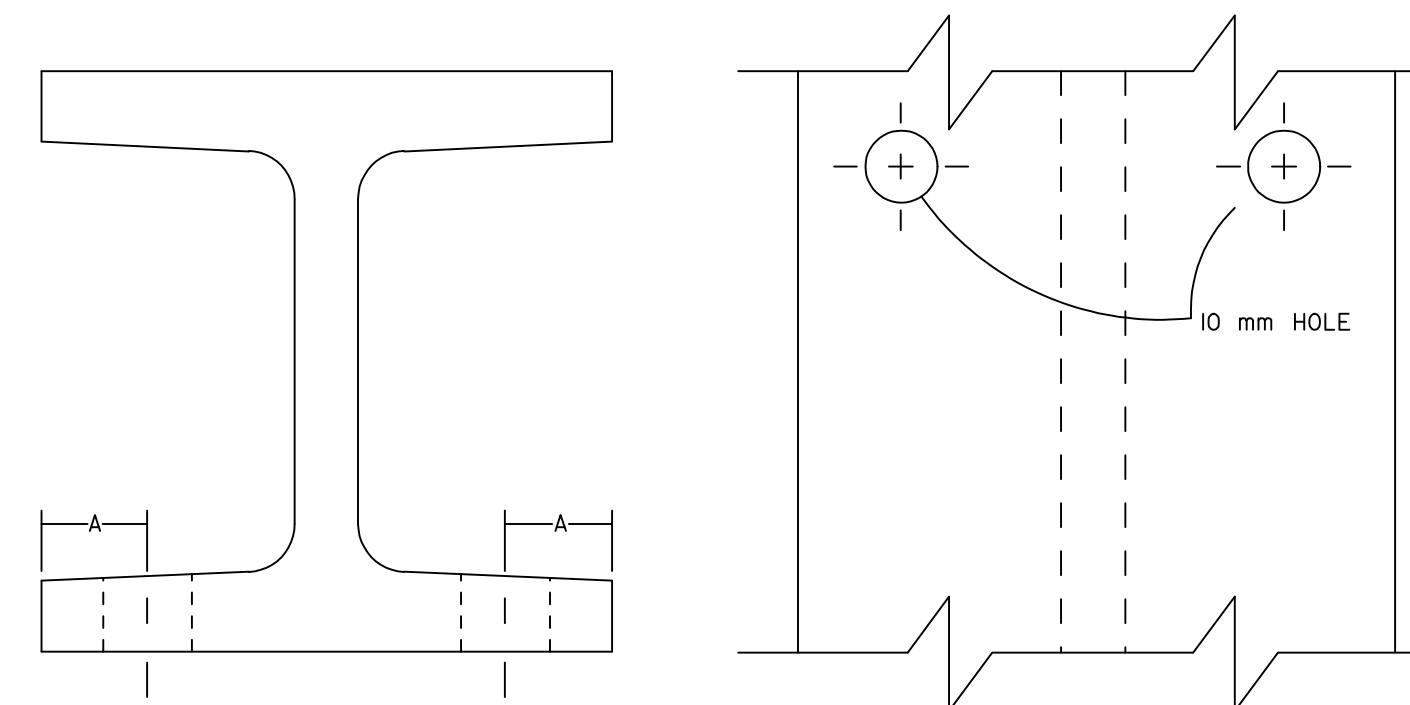
BEAM	A
S75X8.5	11 mm
W150X13	19 mm
W250X18	32 mm
W250X33	32 mm



Mounting of R5-1a on Steel



TYPICAL ZEE BAR
(ASTM B308)



TYPICAL I-BEAM

NOTE:
ALL BOLTS, NUTS, WASHERS & MACHINE SCREWS SHALL BE STEEL
FASTENING ACCESSORIES:

All items of fastening accessories are required to be Zinc or Cadmium plated. The machine screws, nuts and washers shall comply with Sec. 1614 of the Standard Specifications For State Road and Bridge Construction (1990 Edition).

RECORD DRAWING

All dimensions are in millimeters.

3					
2					
1					
NO.	DATE	REVISION	BY	APP'D	
KANSAS DEPARTMENT OF TRANSPORTATION MOUNTING DETAILS FOR FLAT SHEET SIGN ON STEEL I-BEAM POST TE632SI 7-13-93					
FHWA APPROVAL 1-10-95			APP'D NELDA A BUCKLEY		
DESIGNED	DETAILED	KS	QUANTITIES	TRACED	
DESIGN CK.	DETAIL CK.		QUAN. CK.	TRACE CK.	