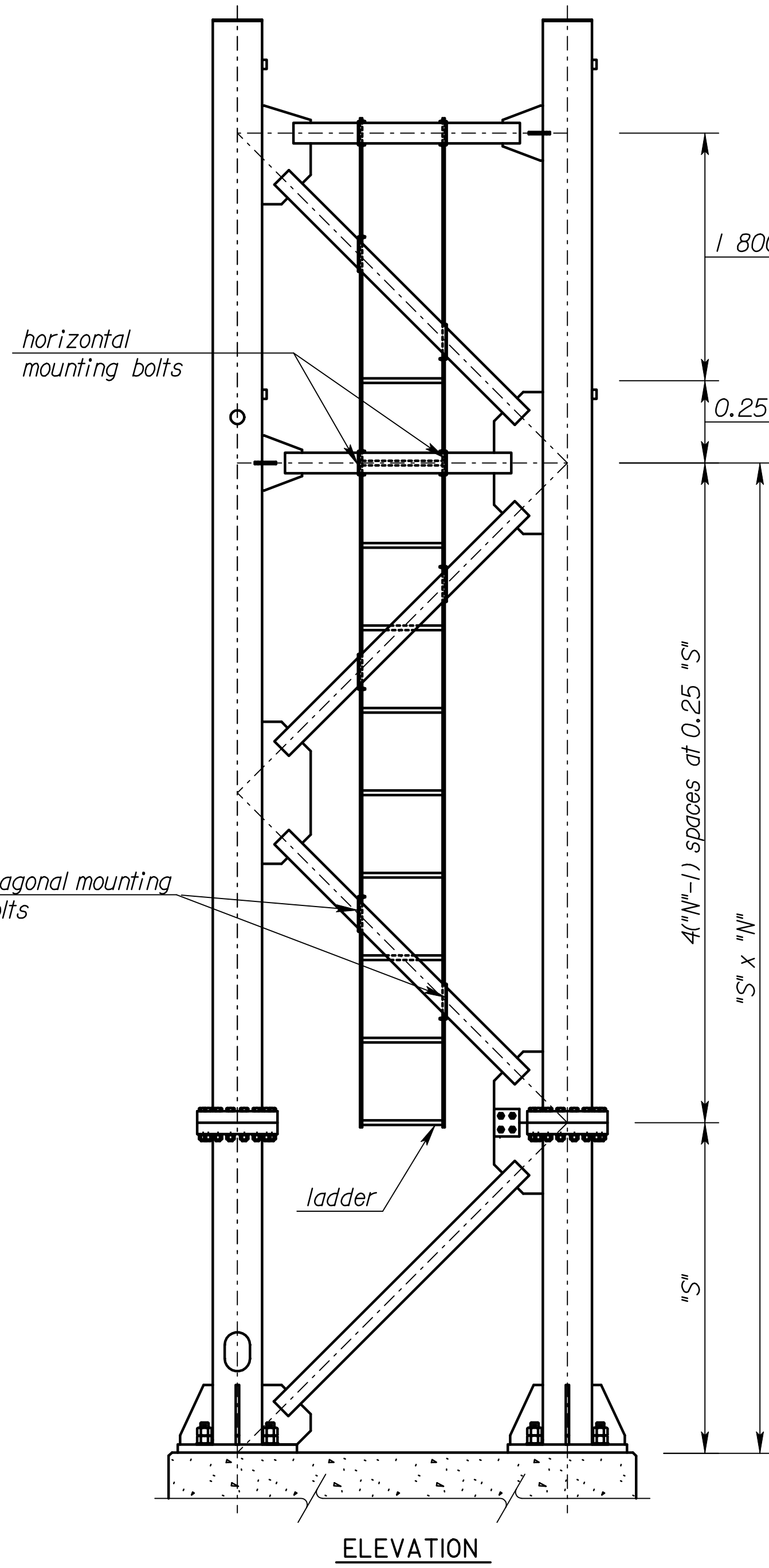
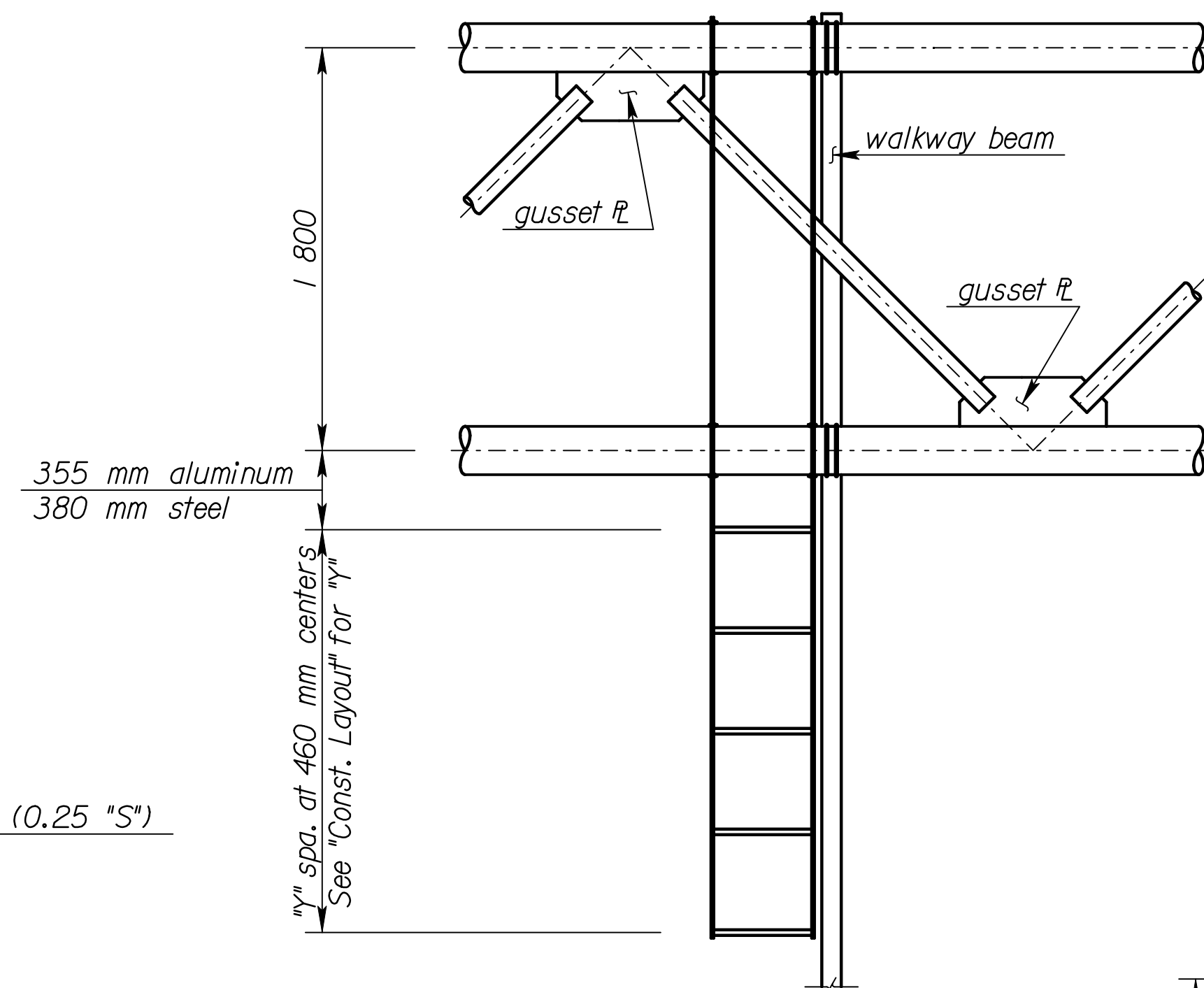


DIMENSION "X"			
Location	Horizontal Connection	Diagonal Connection	Special Ladder Connection
Aluminum	125	190	225
Steel	100	150	175

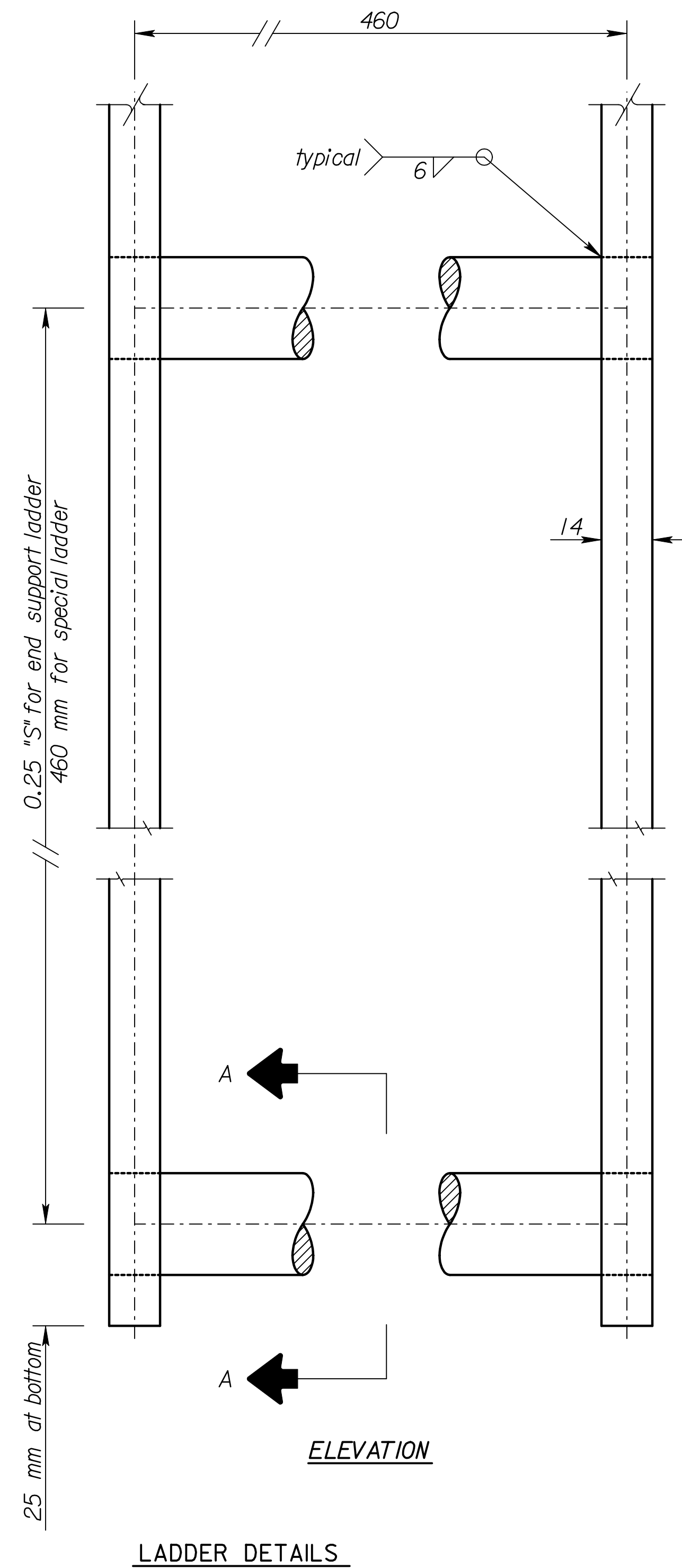


Note: Always mount ladder on outside of end support.
See "Construction Layout" for end support(s) to be used and dimensions "S" and "N".

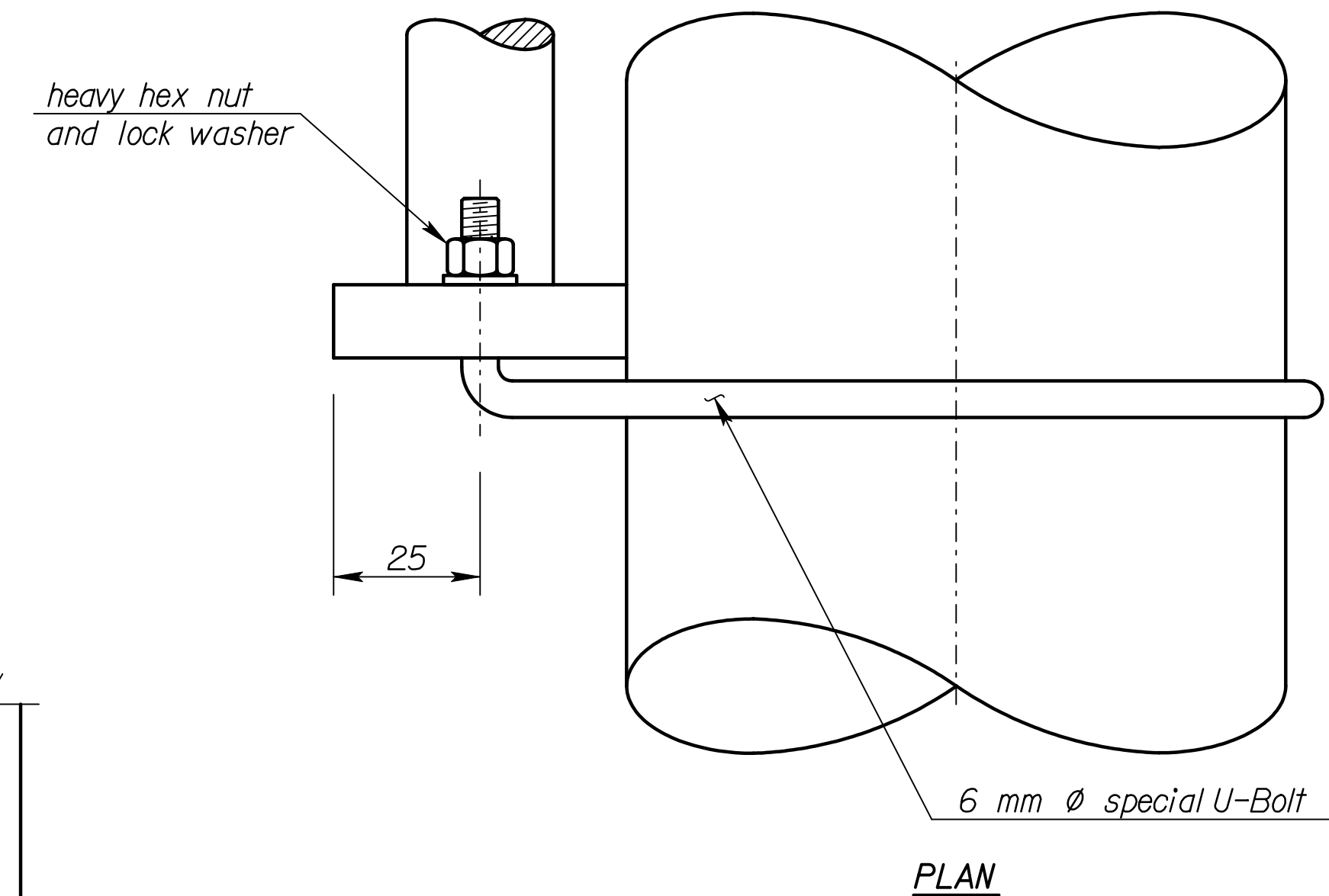


SPECIAL LADDER CONNECTION
(only front truss members shown)

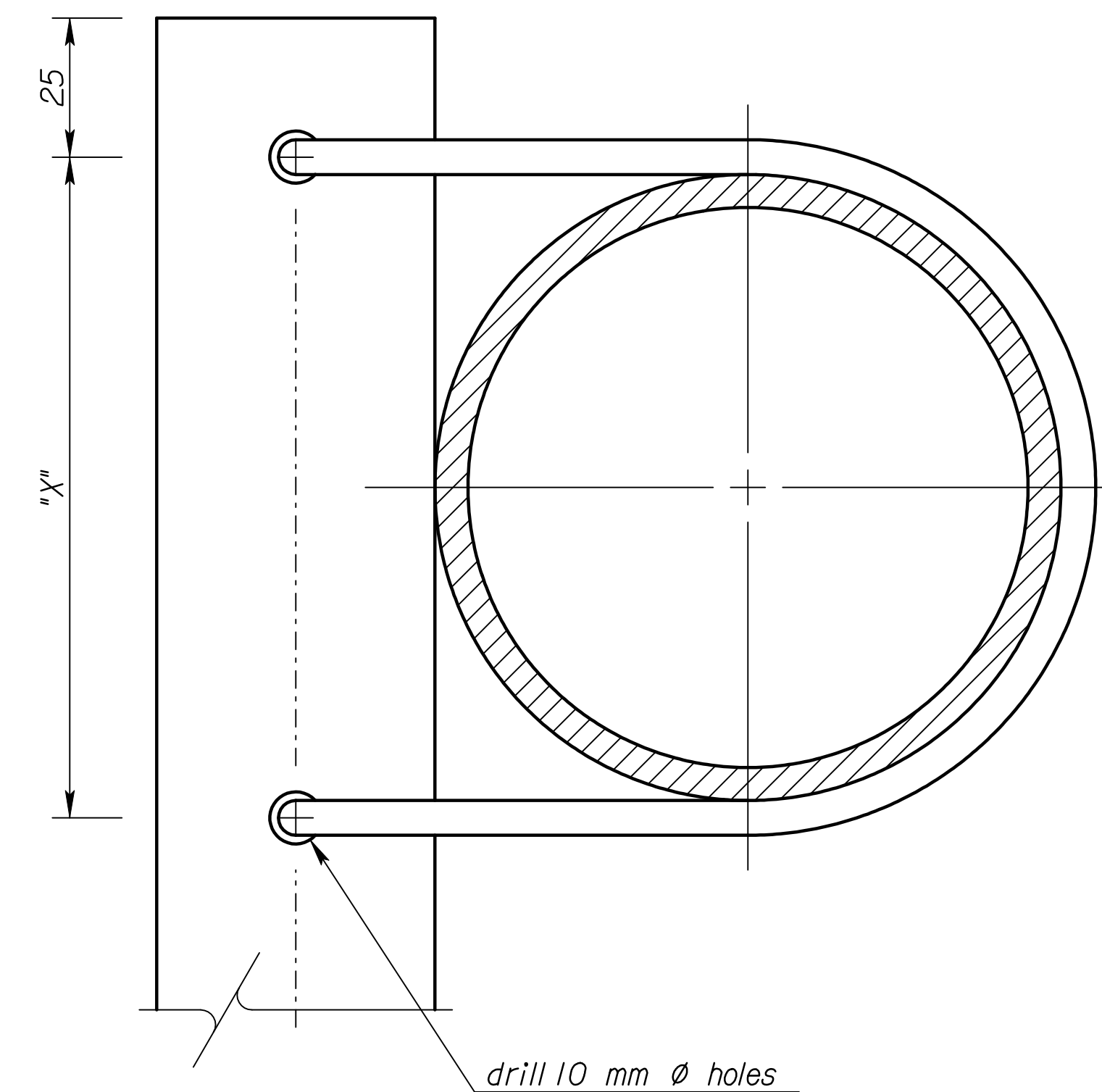
Note: Center the ladder approximately between the walkway beam and the adjacent gusset plate.



LADDER DETAILS



PLAN



SIDE ELEVATION
MOUNTING DETAILS
(top shown, other connections similar)

NO.	DATE	REVISIONS	BY	APP'D
KANSAS DEPARTMENT OF TRANSPORTATION STANDARD STRUCTURAL SIGN SUPPORTS SPAN TYPE OVERHEAD LADDER DETAILS				
SL151A-04 SI			SEDGWICK CO.	
DESIGNED	DATE	4-10-97	APP'D	Kenneth F. Hurst
DESIGN CK.	DETAIL CK.	DRE	QUAN. CK.	CADD CK.
LES	DRE	LES	QUAN. CK.	CADD CK.

RECORD DRAWING