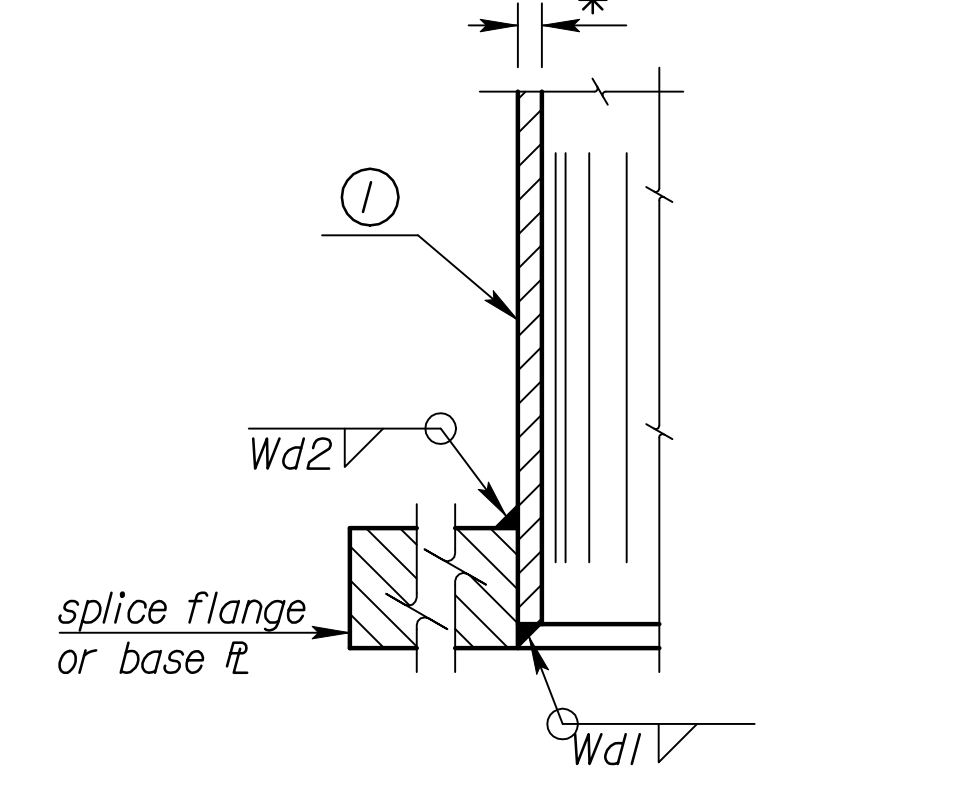
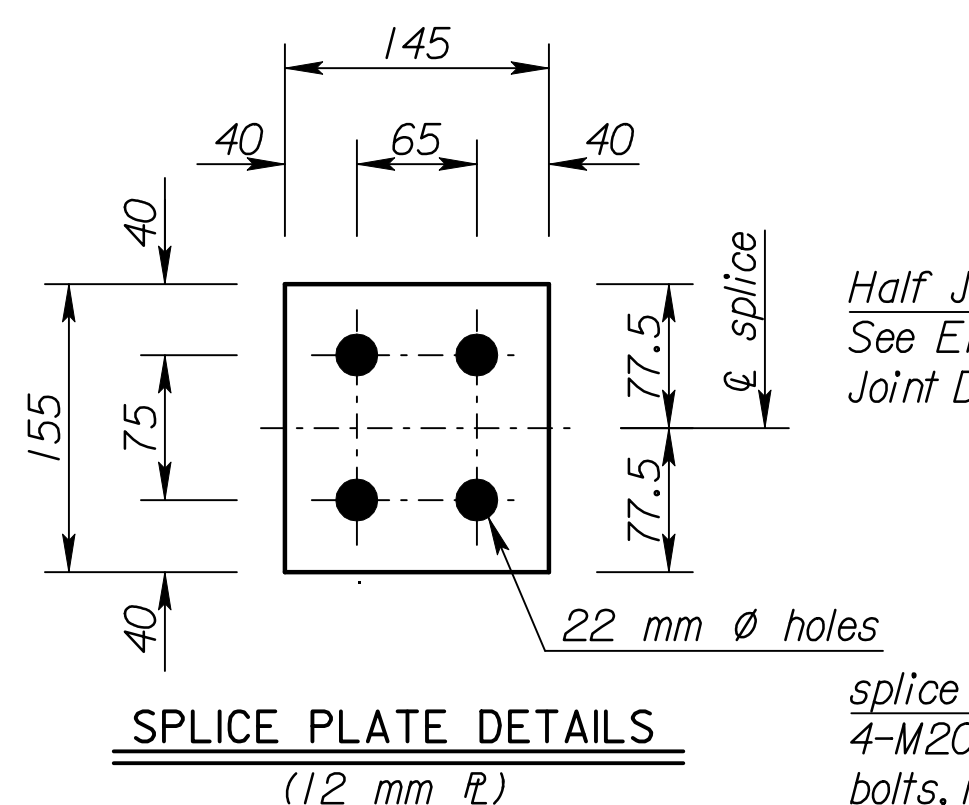
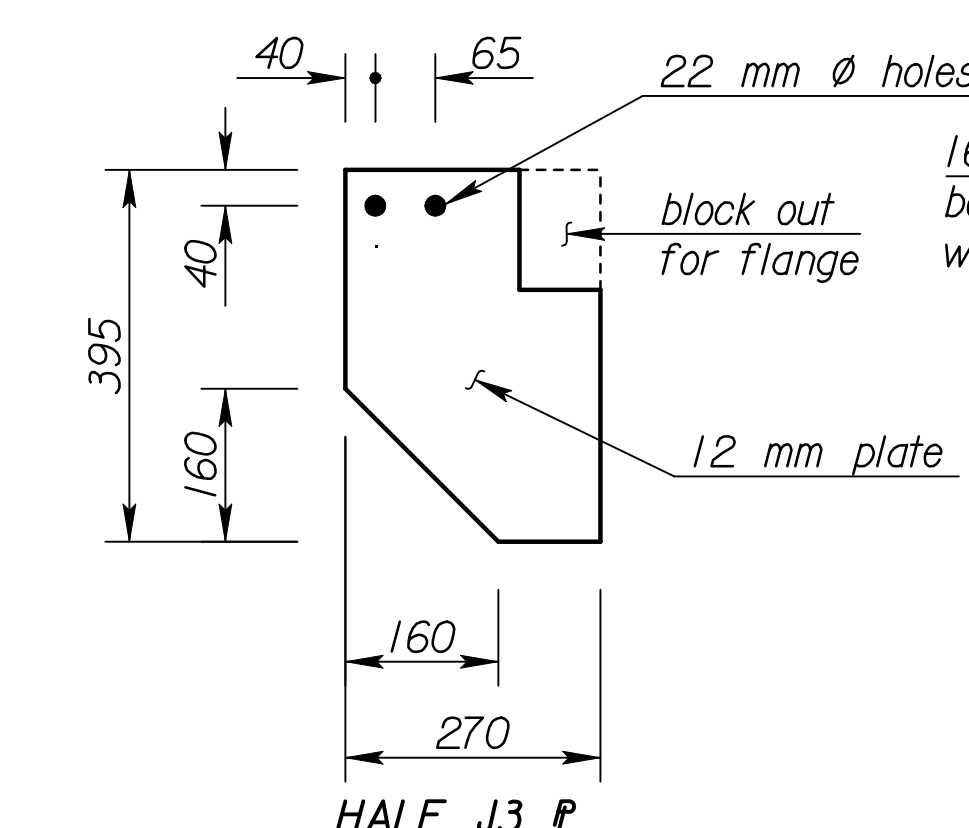
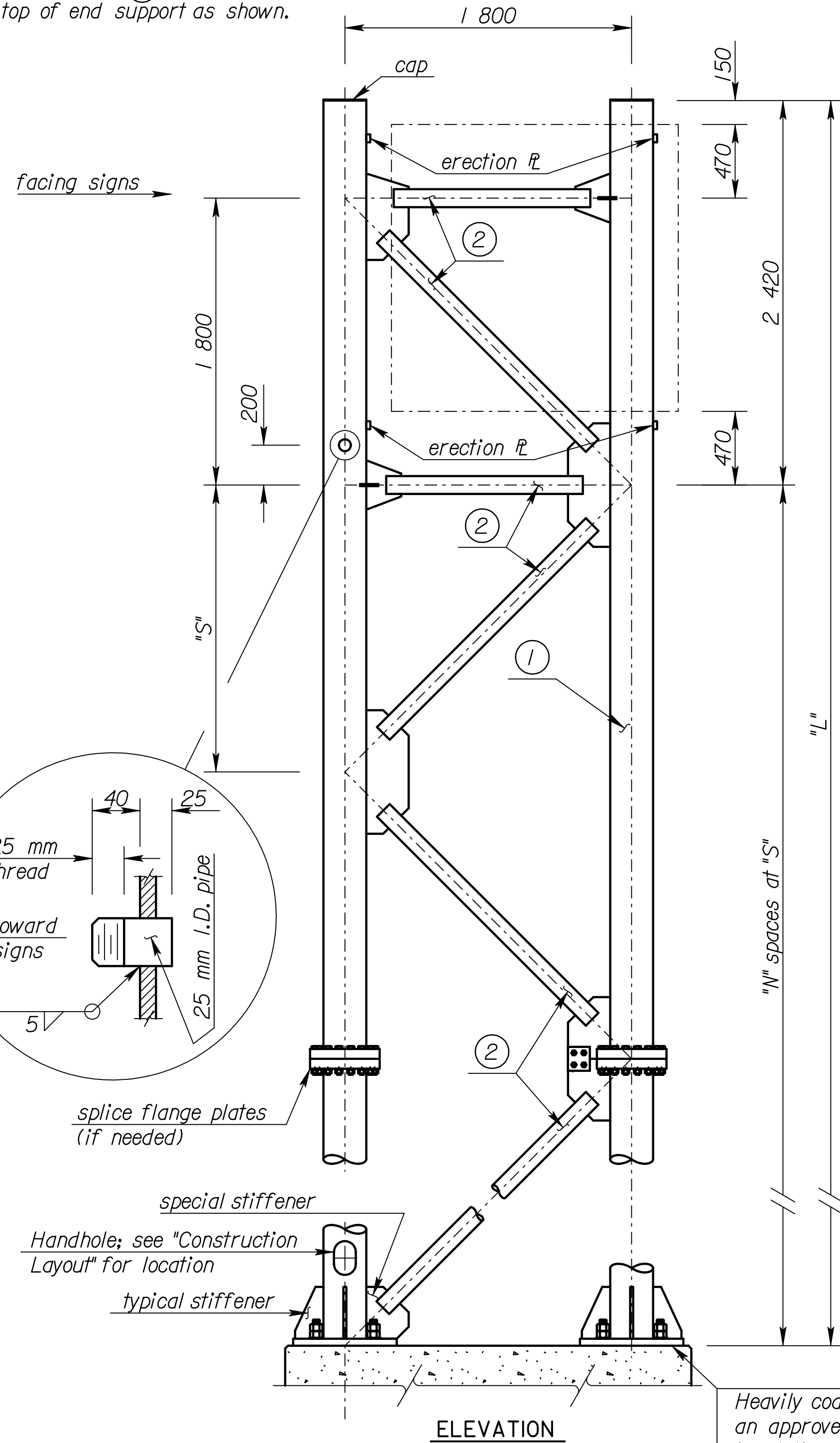
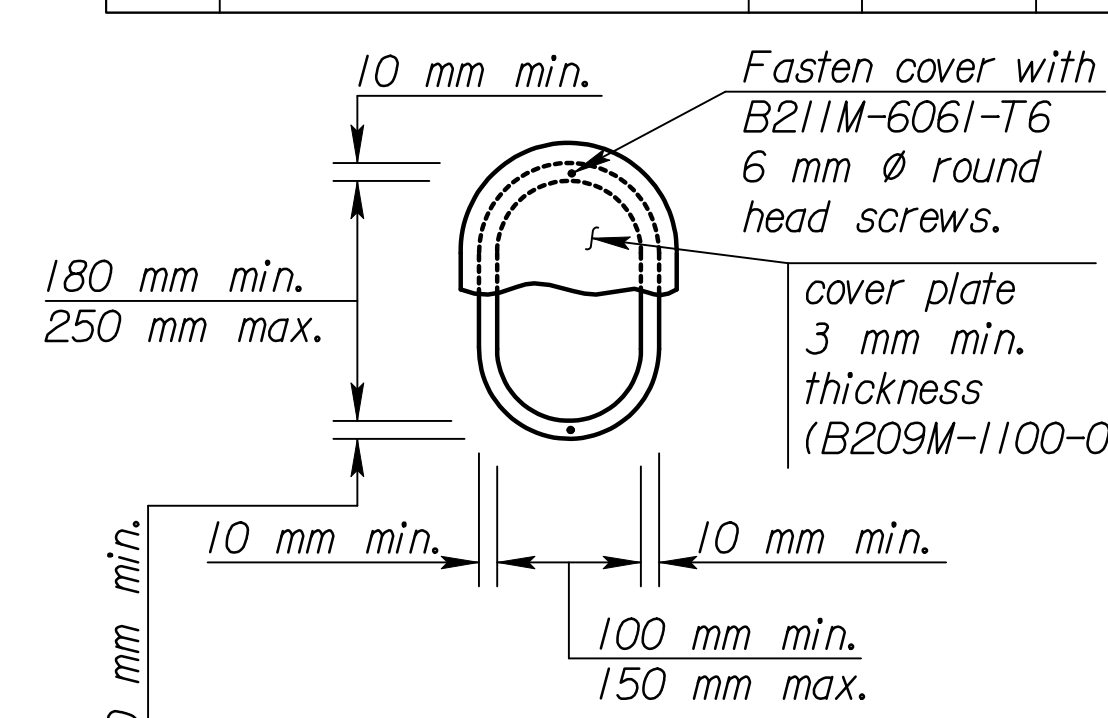
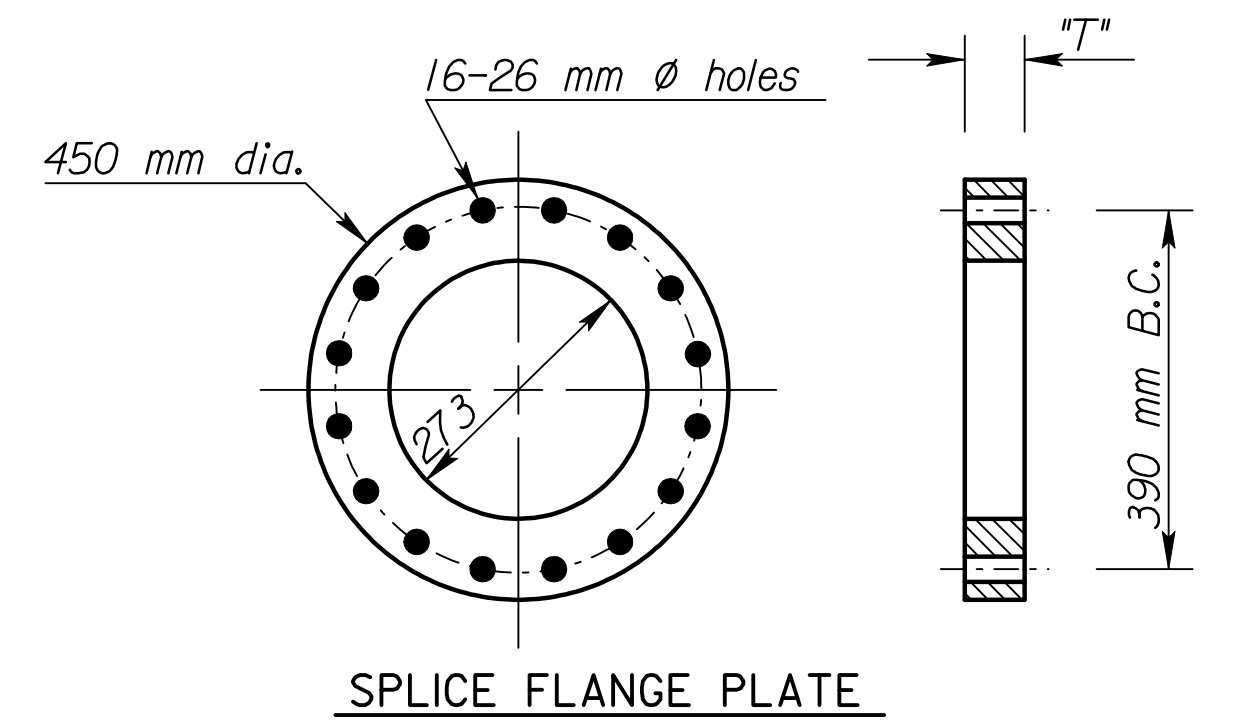
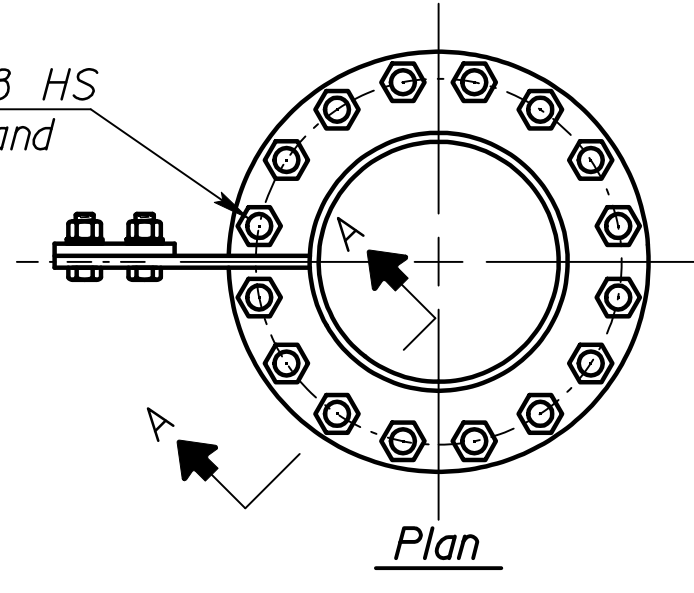


Note: Always start ② diagonal from top of end support as shown.

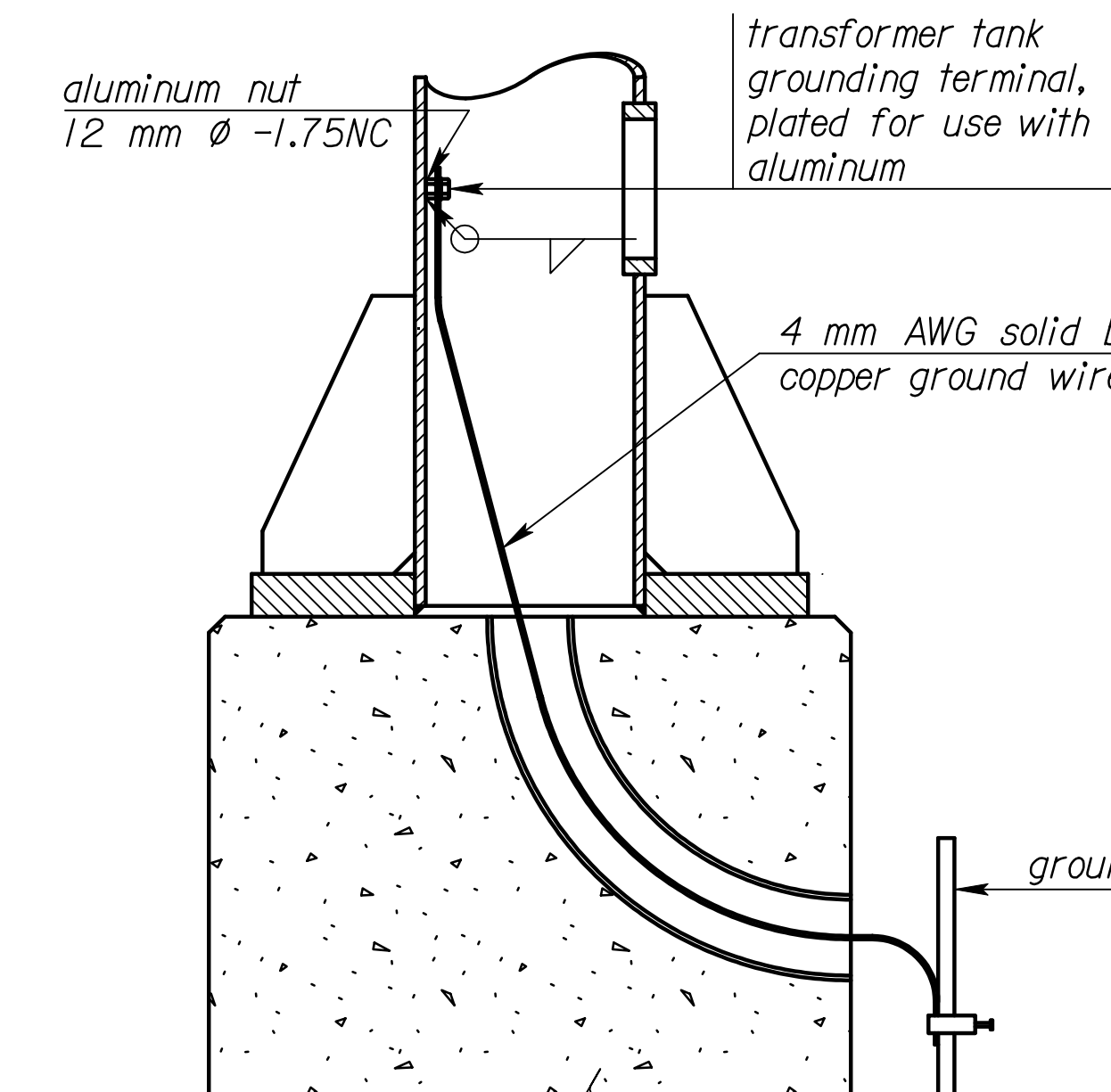
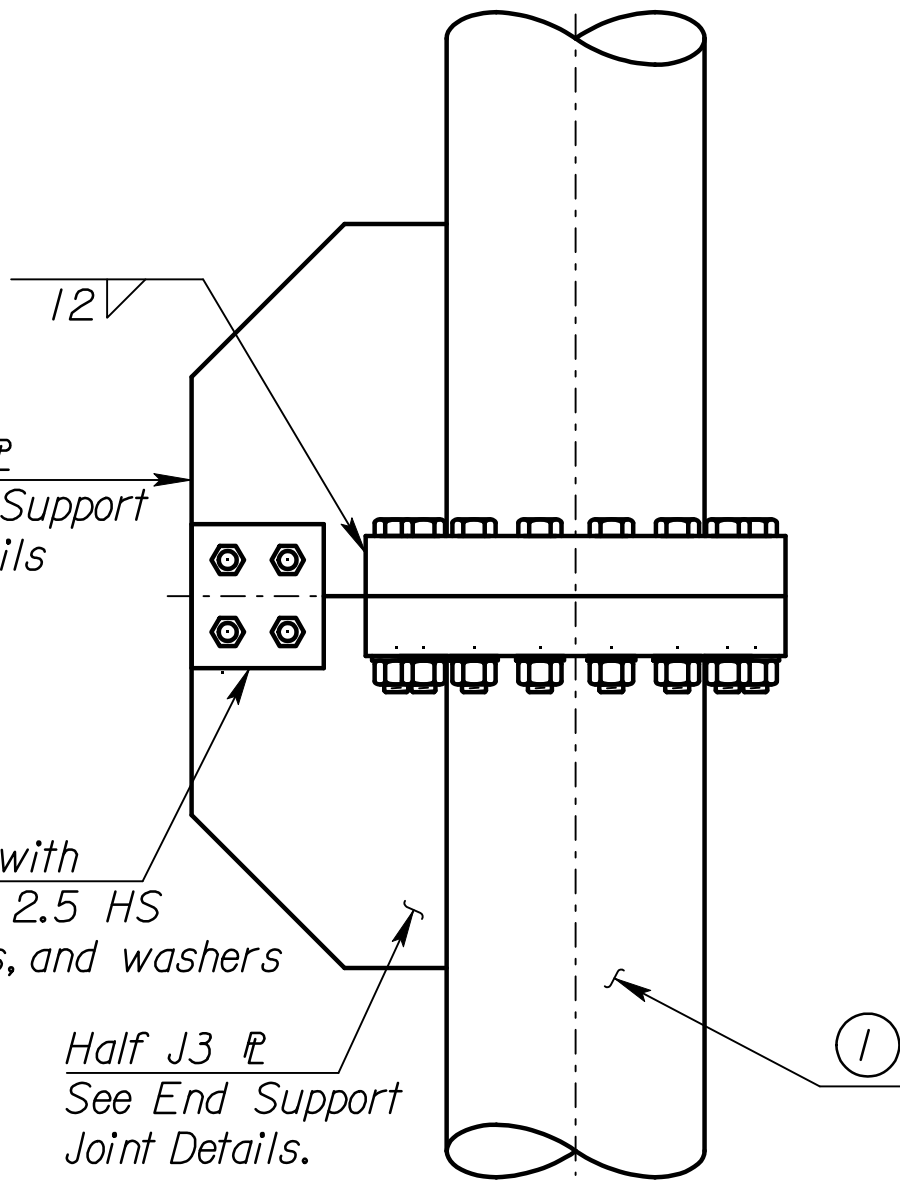
STATE	PROJECT NO.	YEAR	SHEET NO.	TOTAL SHEETS
KANSAS	54-87 K-6657-01	2002	768	1122



Section A-A
Make Wd1 depth equal to pipe wall thickness, build out to obtain full throat.



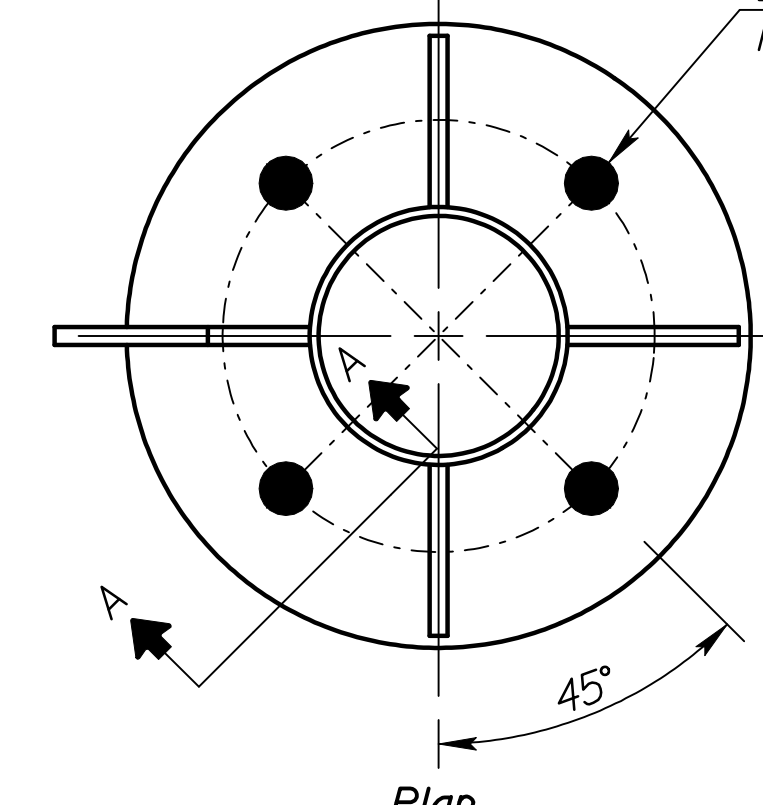
Note: Use a handhole frame bar whose net area is at least 60 percent of the pole section removed. Maintain the pole section properties at the handhole. Build the frame from a bar conforming to ASTM B209M-6061-T6 or a casting conforming to ASTM B26-356-T6.



END SUPPORT SPLICE DETAIL (Optional)

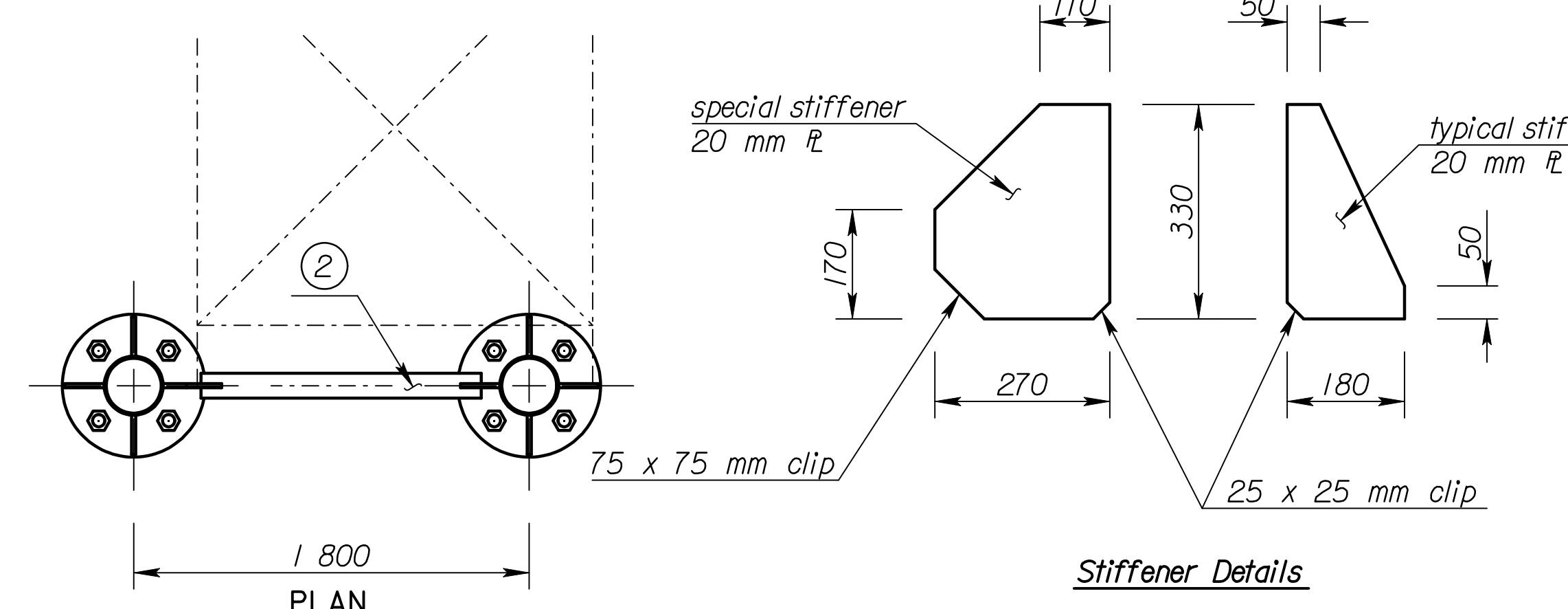
GROUNDING DETAILS

Member ① is 273 mm O.D. pipe.
Member ② is 114 mm O.D. pipe.

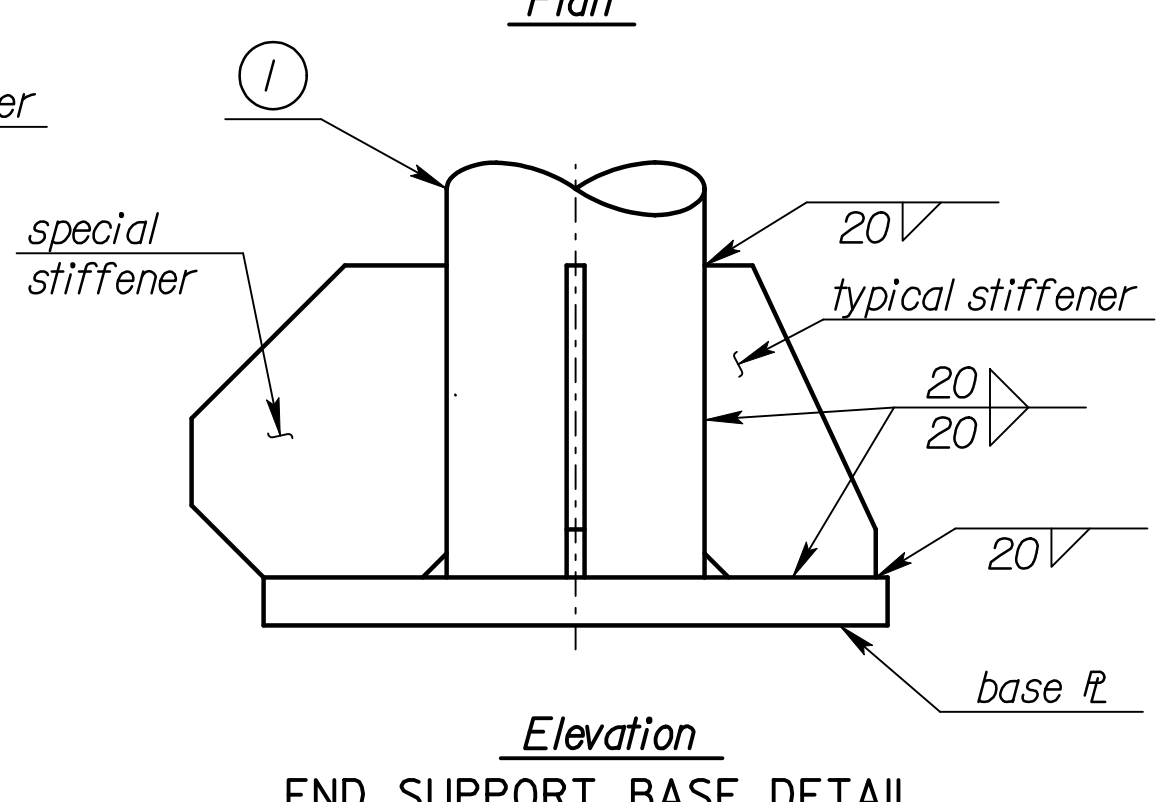


Member ①* wall thickness	Fillet Weld size Wd2	Anchor Bolt "d"	Base flange "t"	Splice flange "T"
4.19	6	30	30	40
7.80	10	36	45	50
9.27	11	42	50	55
12.7	14	48	50	65
15.1	16	56	60	70
18.2	20	56	70	80

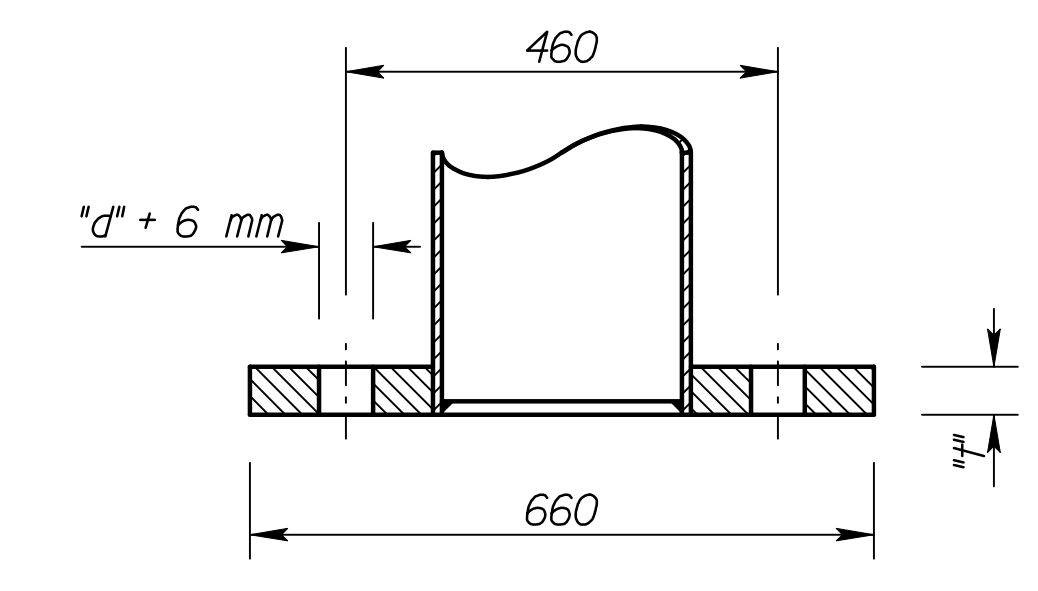
* See "Construction Layout" for wall thickness, "N", "S", and "L".



Stiffener Details



END SUPPORT BASE DETAIL



Section

RECORD DRAWING

NO.	DATE	REVISIONS	BY	APP'D
KANSAS DEPARTMENT OF TRANSPORTATION STANDARD STRUCTURAL SIGN SUPPORTS SPAN TYPE OVERHEAD ALUMINUM ALTERNATE END SUPPORT FRAMING PLAN AND SPLICE DETAILS SL151B-01S1				
DESIGNED	BFM	DETAILED	DDP	QUANTITIES
DESIGN CK.	RDH	DETAIL CK.	RDH	QUAN. CK.

FWHA APPROVAL 4-10-97 APP'D Kenneth F. Hurst
 CADD DJE
 LES

Scale = 1/8" = 1'-0"
 12/1997/97362/As-Builts/dgn/s/Vol 4/SH 768-KDOT STD-Sign-151bsi.dgn Last Rev: 10-4-07 Bjs: gdr