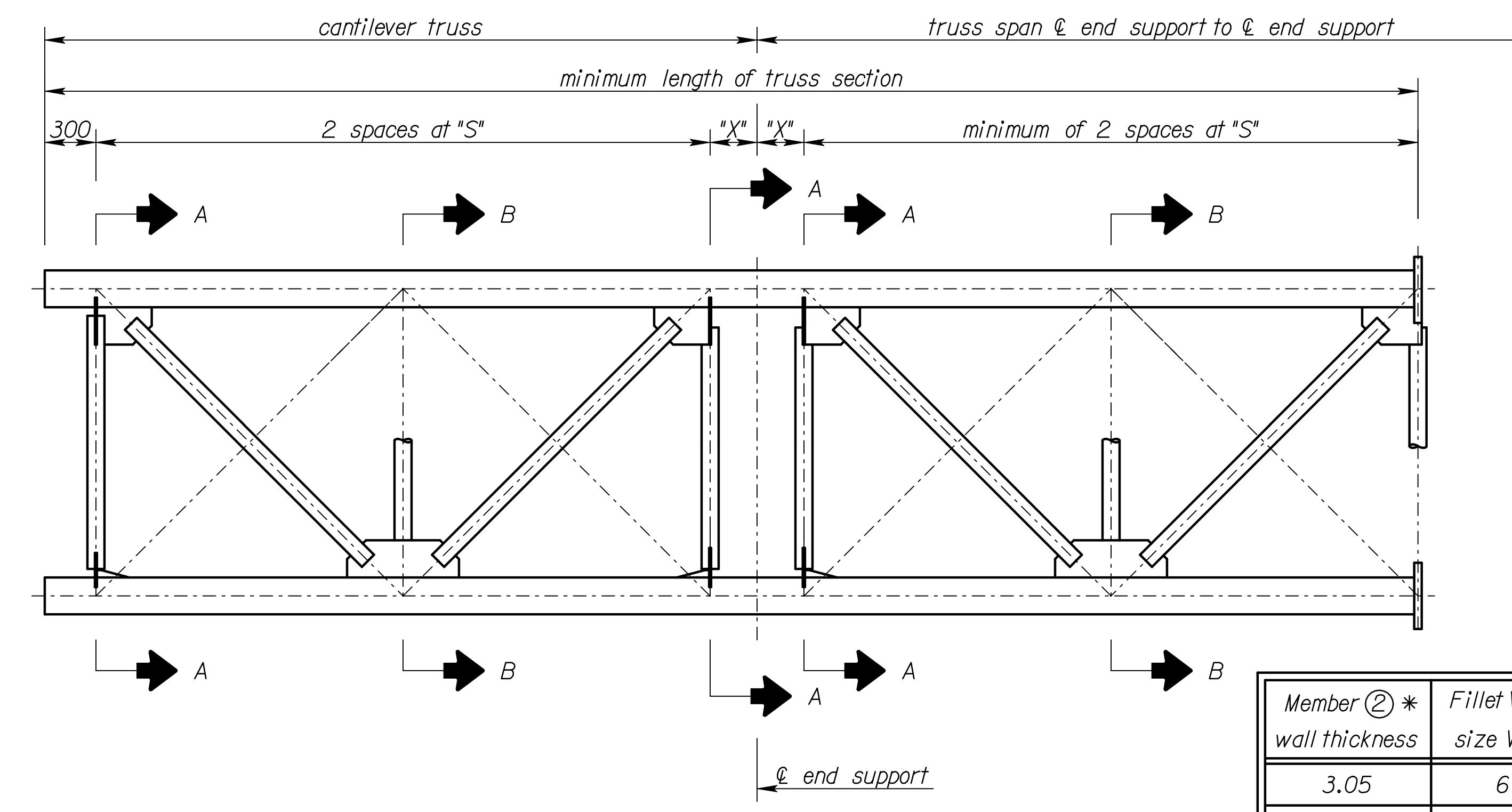
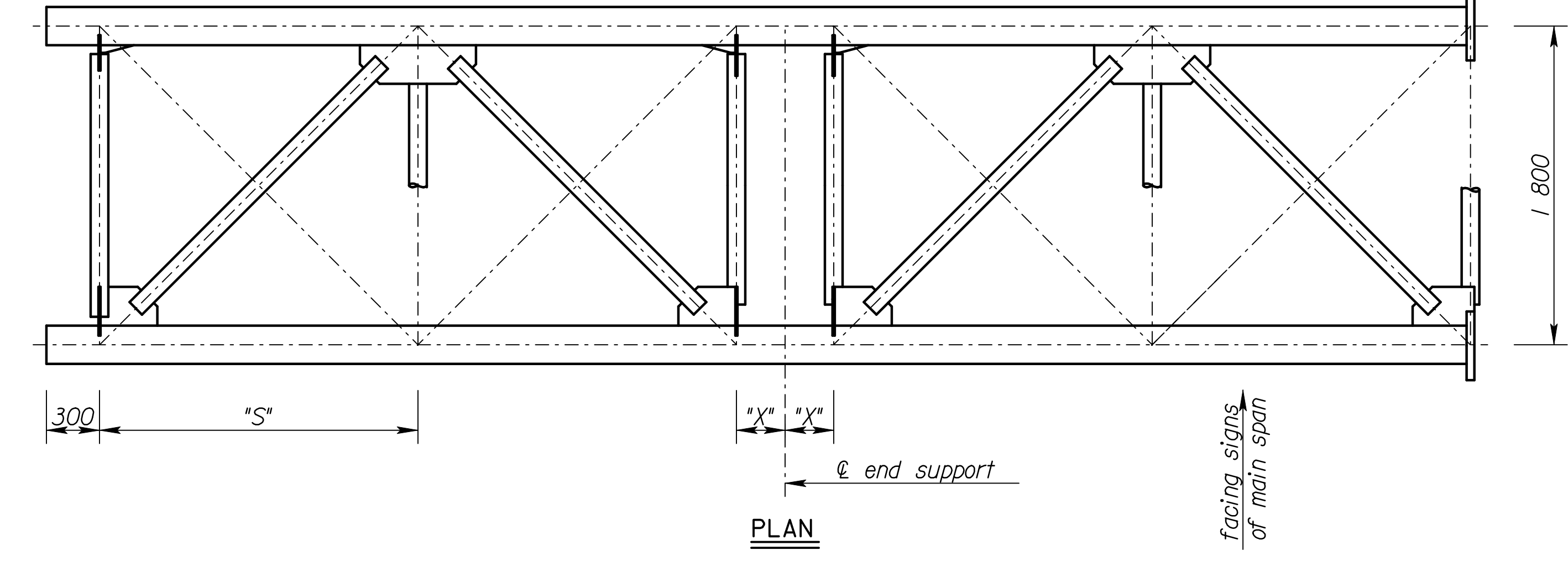
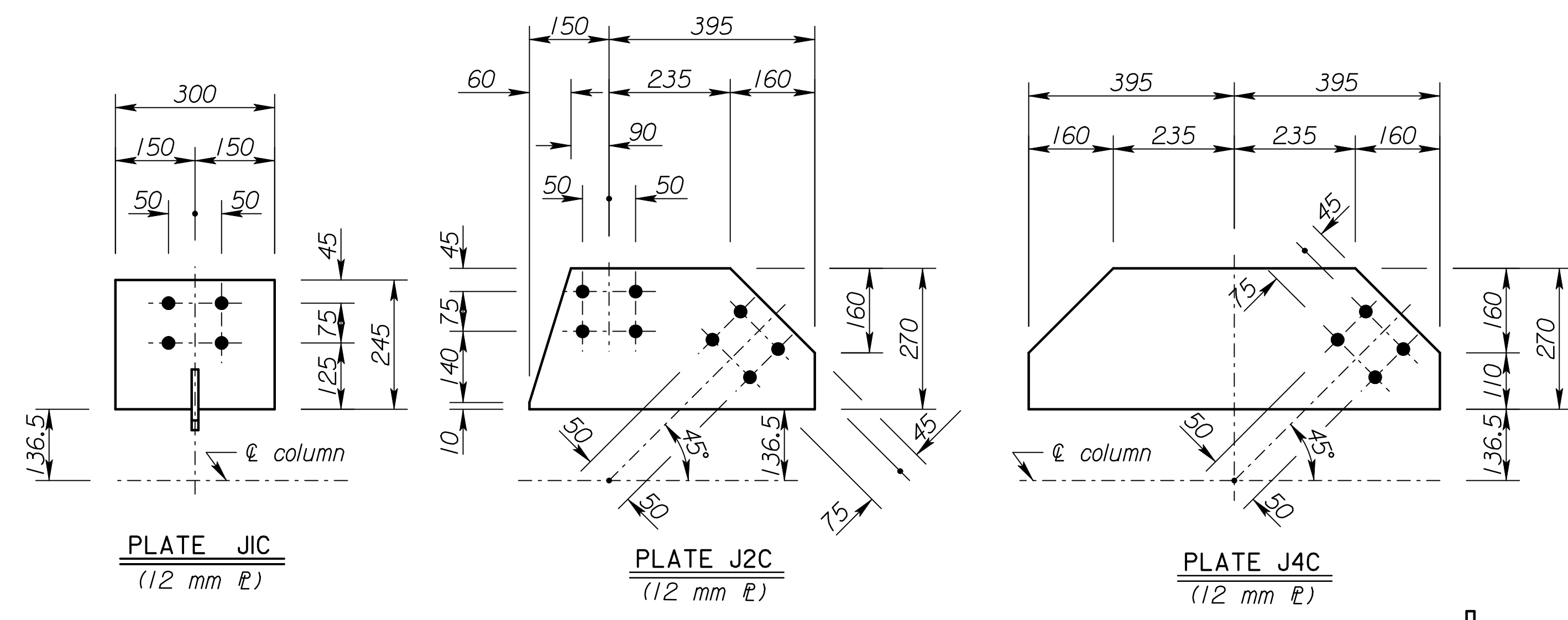


Note: This sheet shows only those details of the cantilever-truss that differ from the standard truss details. Refer to the standard truss details for any details not shown on this sheet.

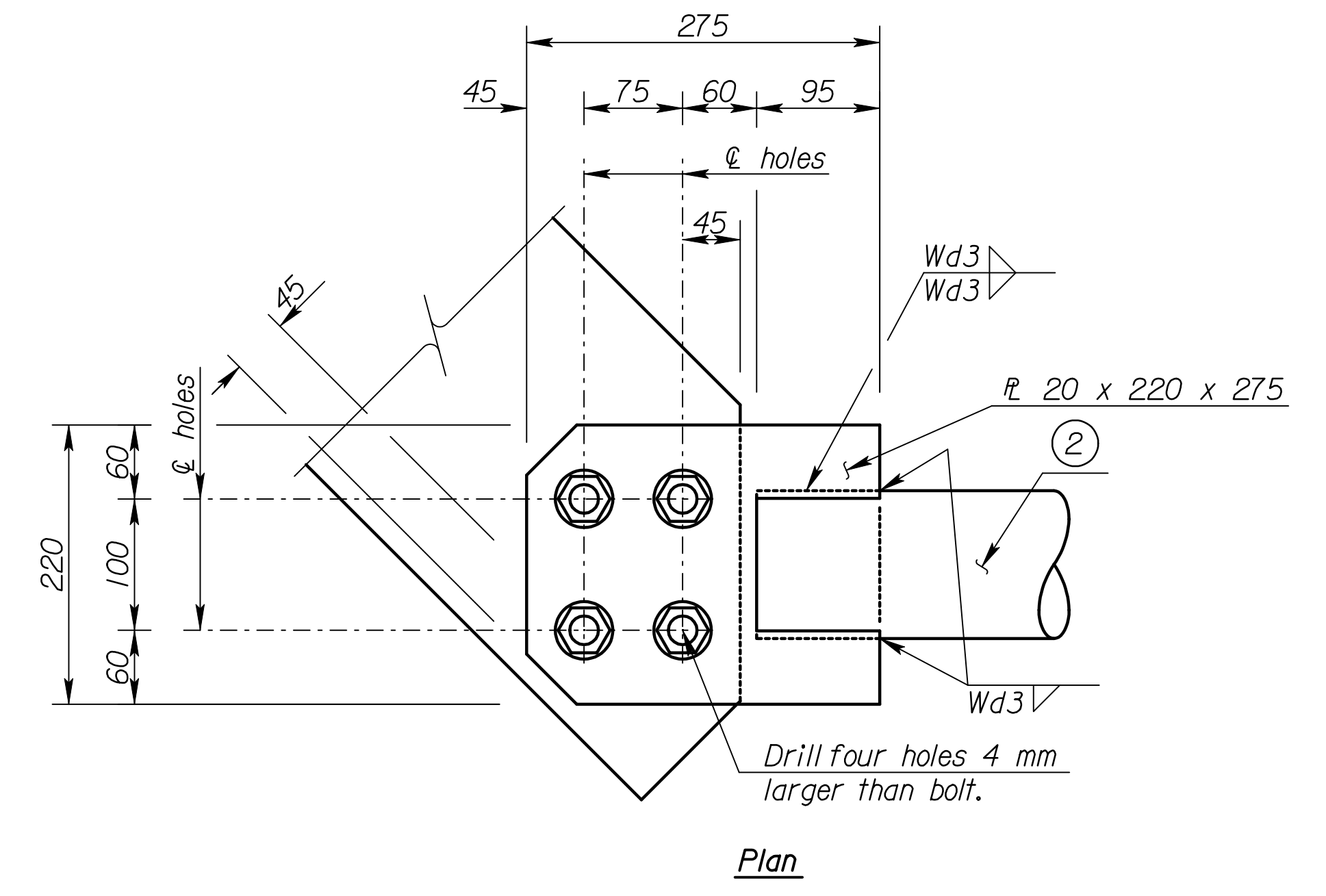
Note: This sheet shows the bolted option for the cantilever end support. The Contractor may choose to fabricate the end support exactly as shown for the standard truss, except that the top two secondary members would be welded into place in the field after the truss is erected.



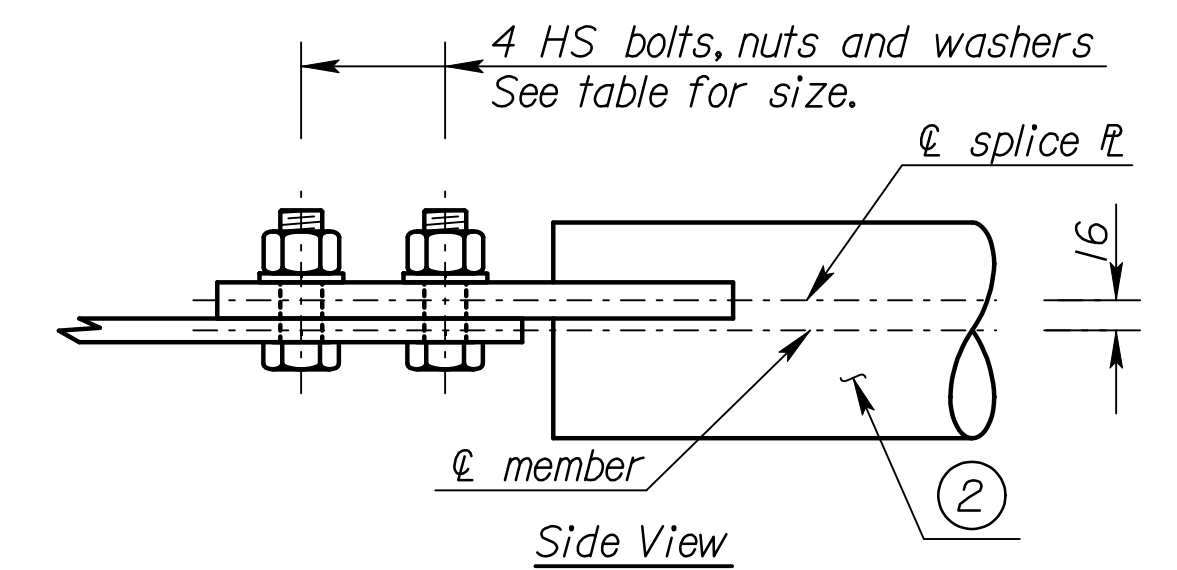
ELEVATION

Member ② * wall thickness	Fillet Weld size Wd3	Bolt Size
3.05	6	M16 x 2 x 60
6.02	11	M22 x 2.5 x 65
8.56	16	M24 x 3 x 70

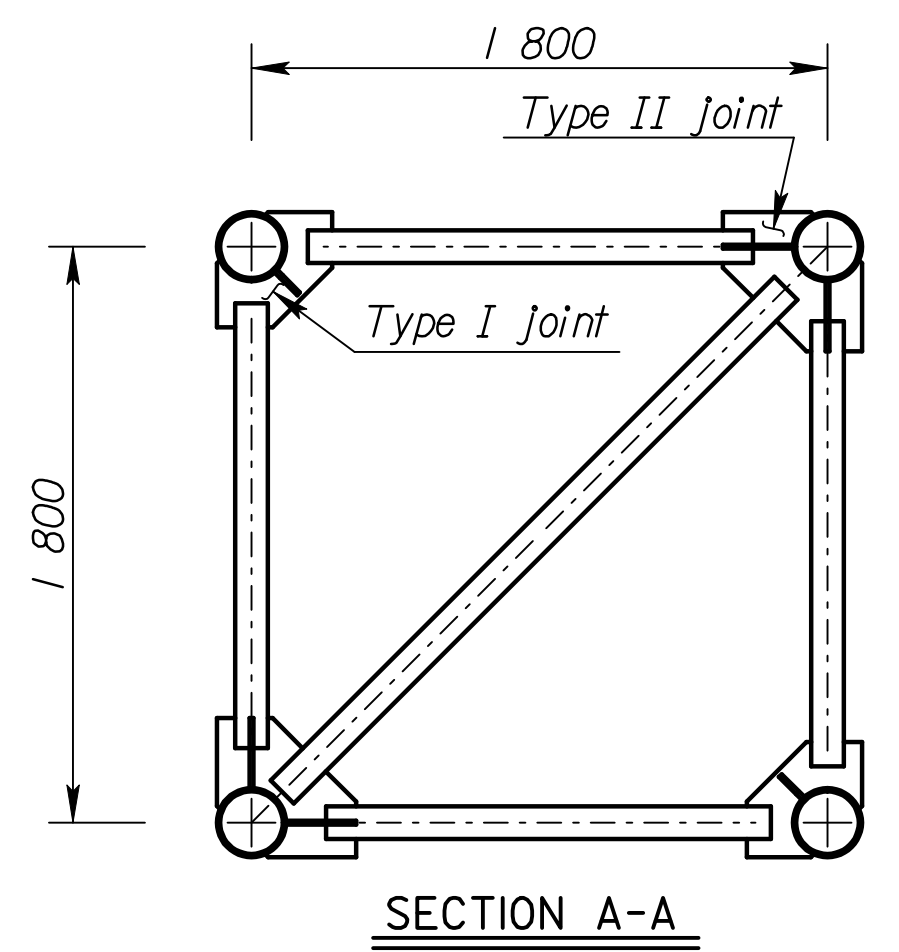
* See "Construction Layout" for wall thickness, "S" and "X".



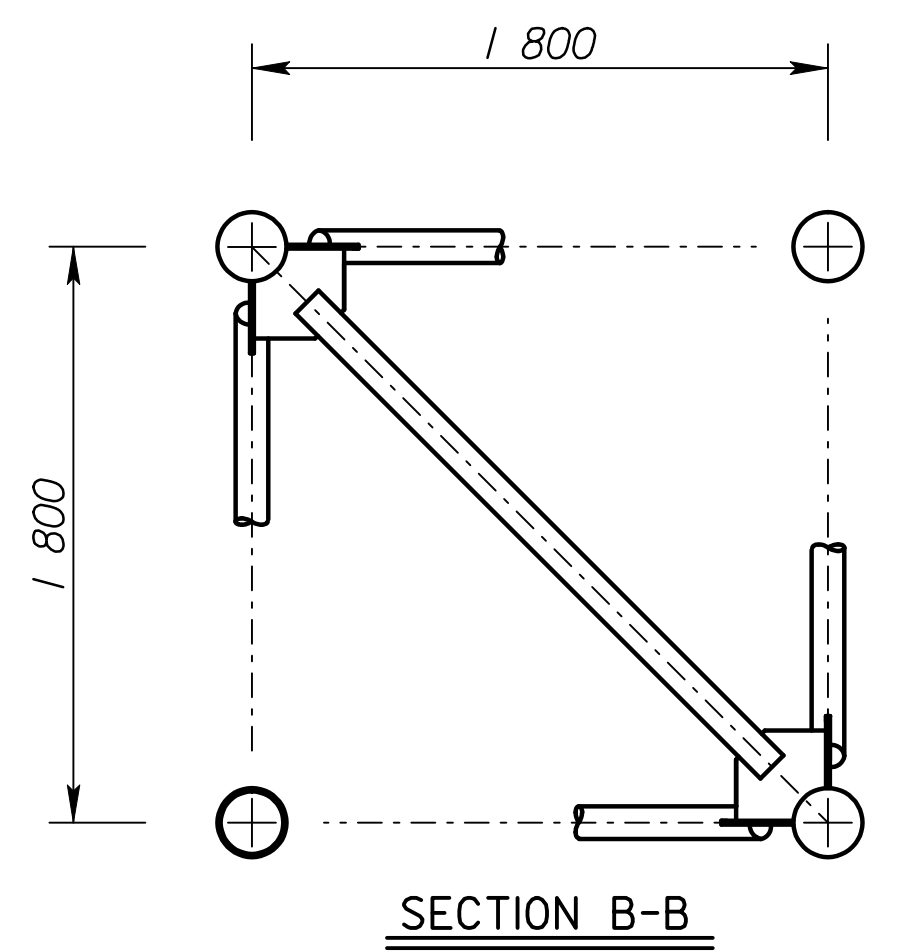
Plan



TYPICAL BOLTED JOINT



SECTION A-A



SECTION B-B

RECORD DRAWING

NO.	DATE	REVISIONS	BY	APP'D
KANSAS DEPARTMENT OF TRANSPORTATION STANDARD STRUCTURAL SIGN SUPPORTS CANTILEVER-SPAN TYPE OVERHEAD ALUMINUM ALTERNATE END SUPPORT AND TRUSS SPECIAL DETAILS SL151B-07 SI				
DESIGNED	LES	DESIGNED	LES	APP'D
DESIGN CK.	LRR	DETAIL CK.	LRR	QUAN. CK.

Scale = 1/8" = 1'-0"
12/1997/97362/As-Builts/dgn/s/Vol 4/SH 774-KDOT STD-Sign-151bsi.dgn Last Rev: 10-4-07 By: gdr