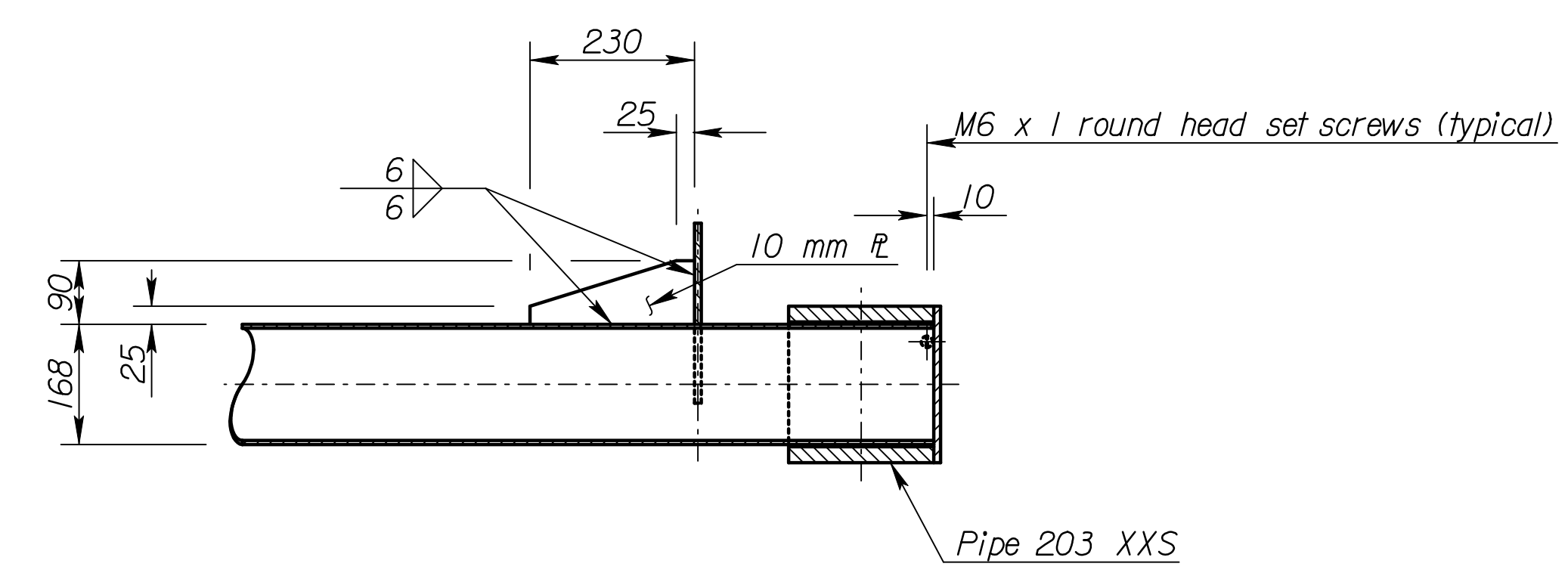
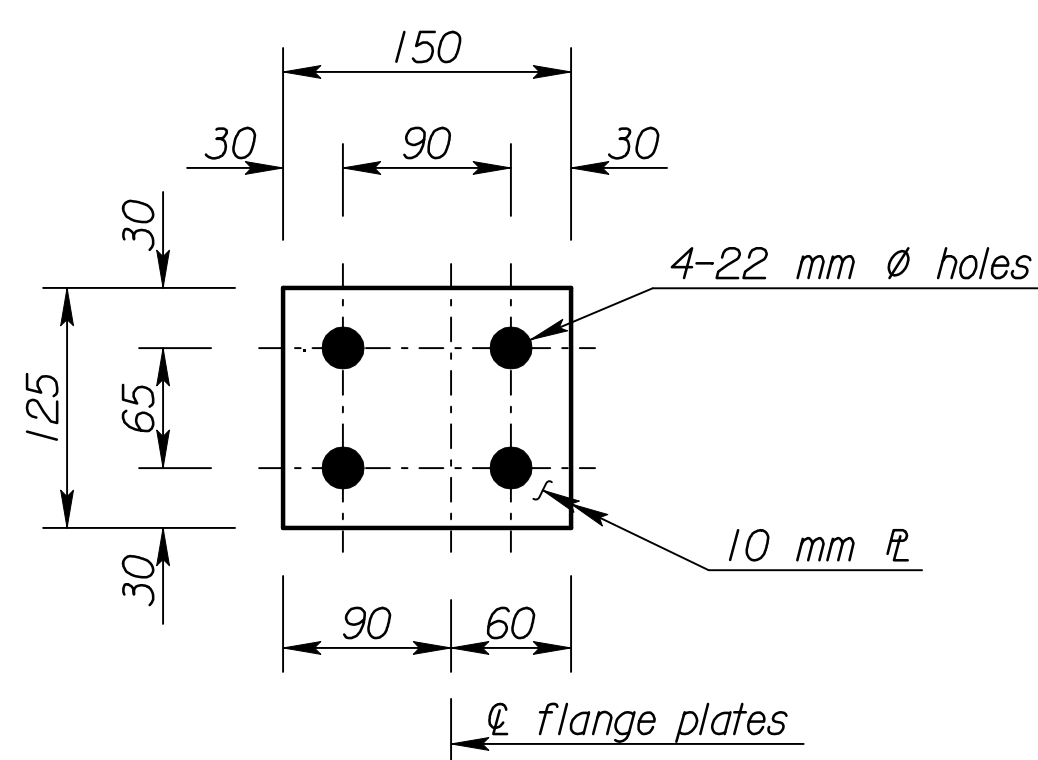


End View

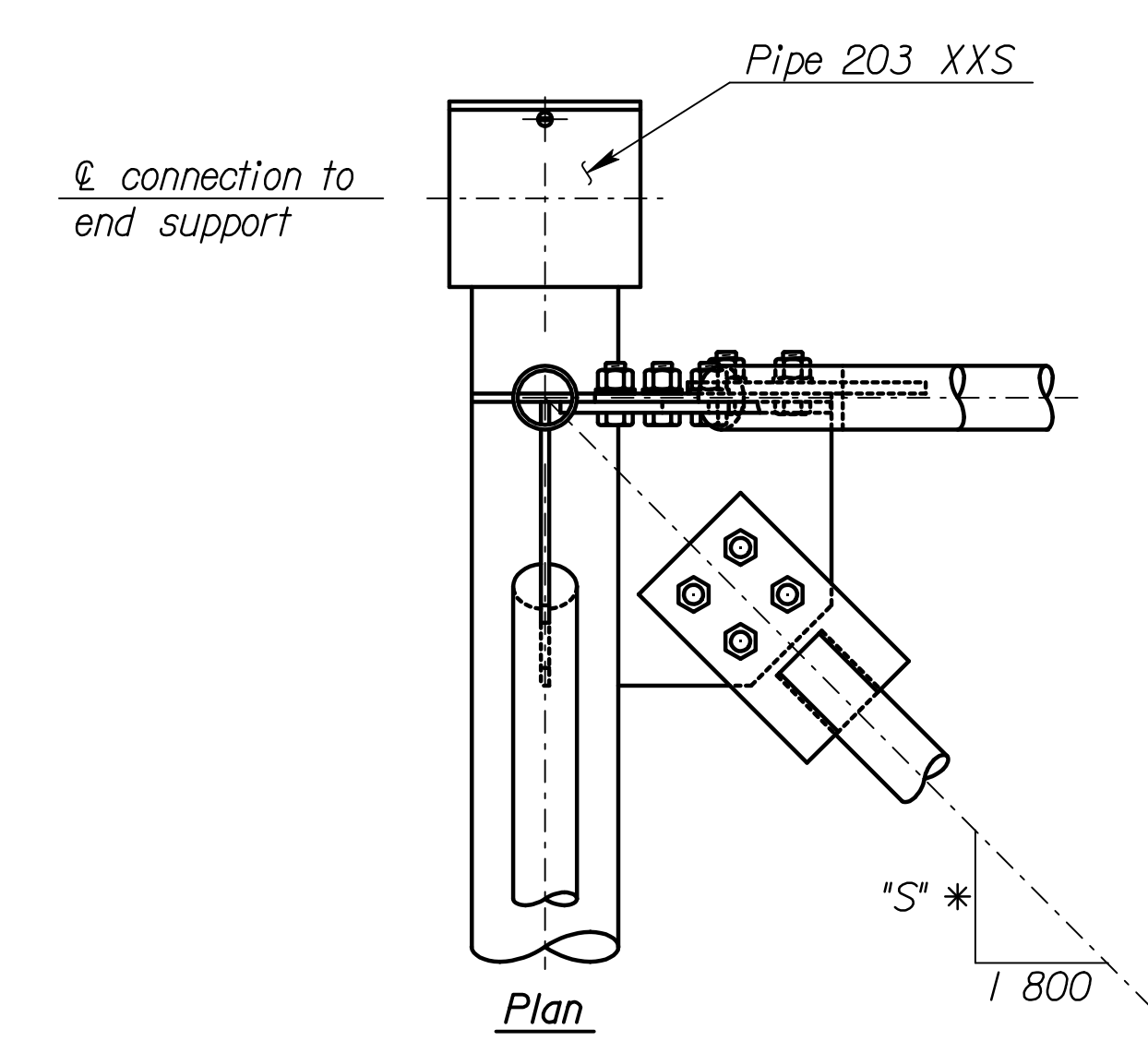
**TYPE I JOINT DETAILS**



Section A-A

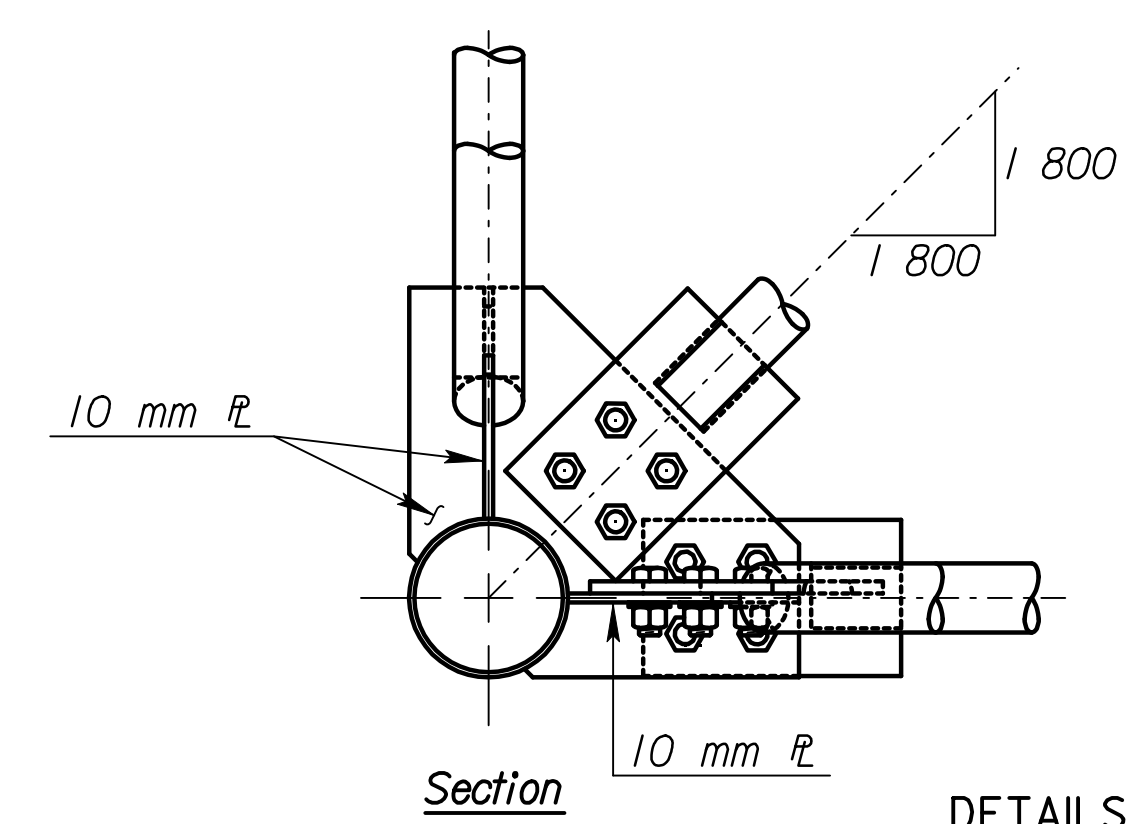


SPLICE PLATE DETAILS

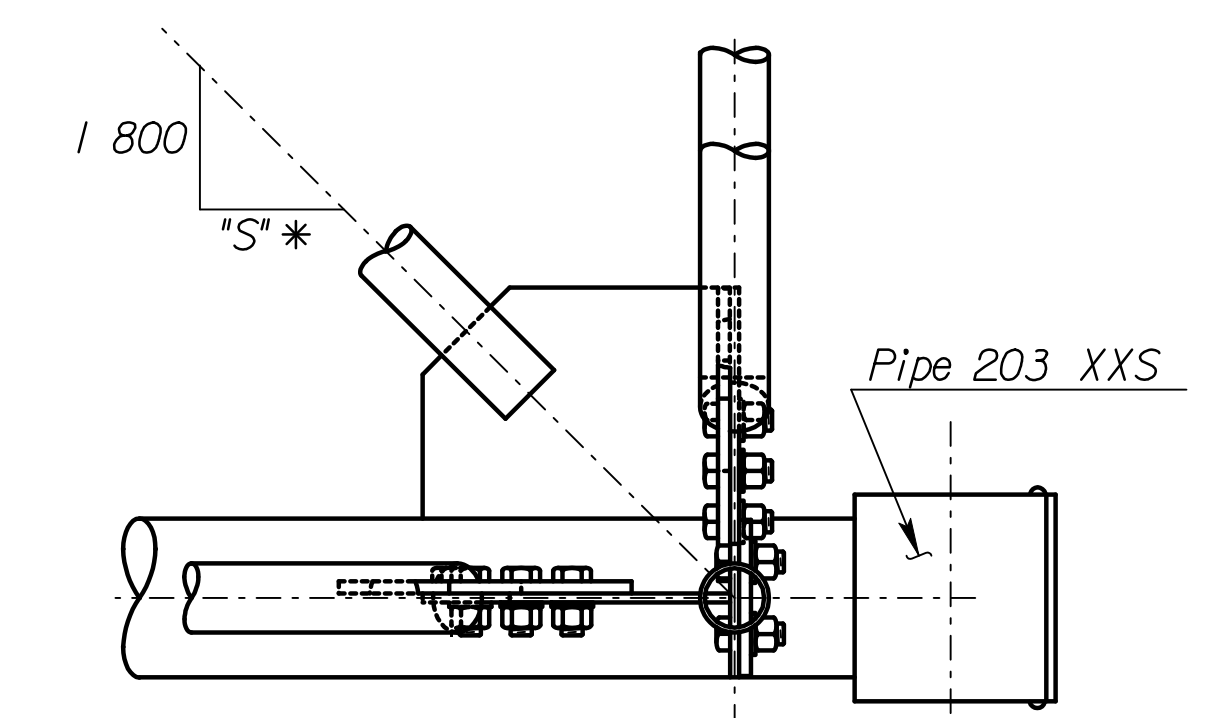


Plan

NOTE: Clip 3 mm from the washers for the M24 x 3 bolts in the Type II joints to clear weld.

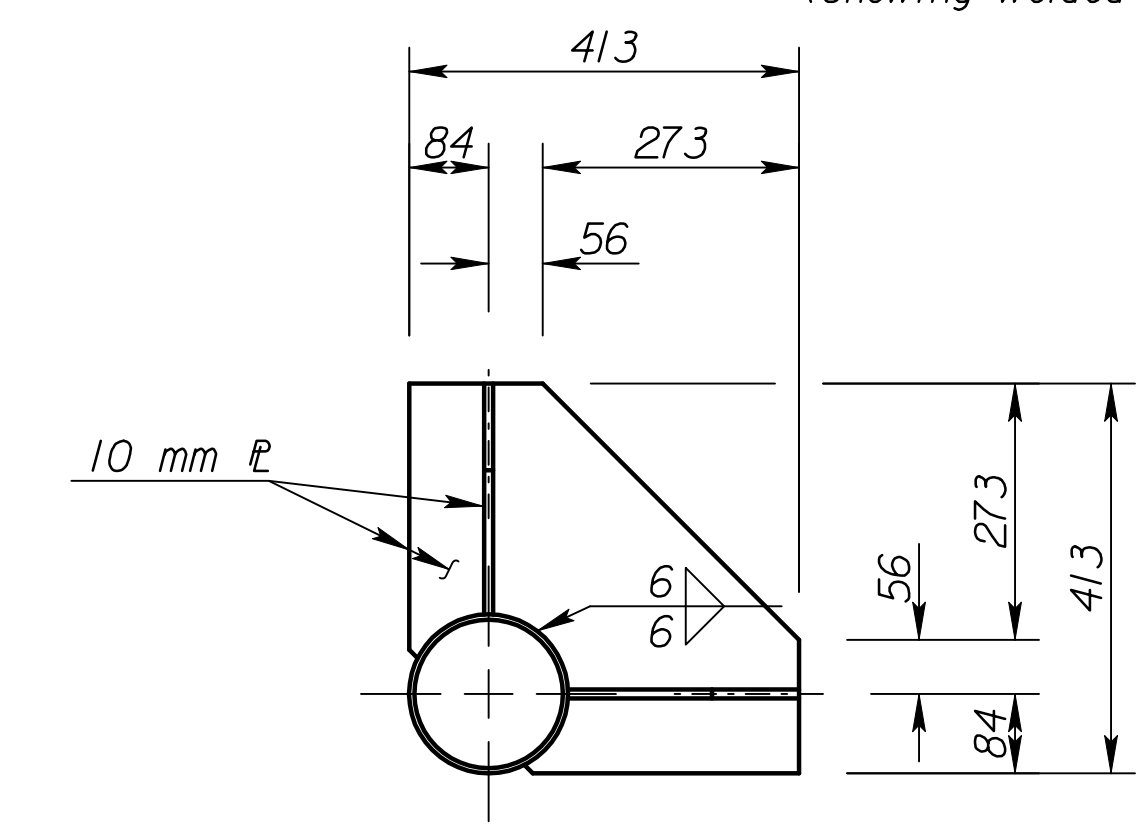


Section

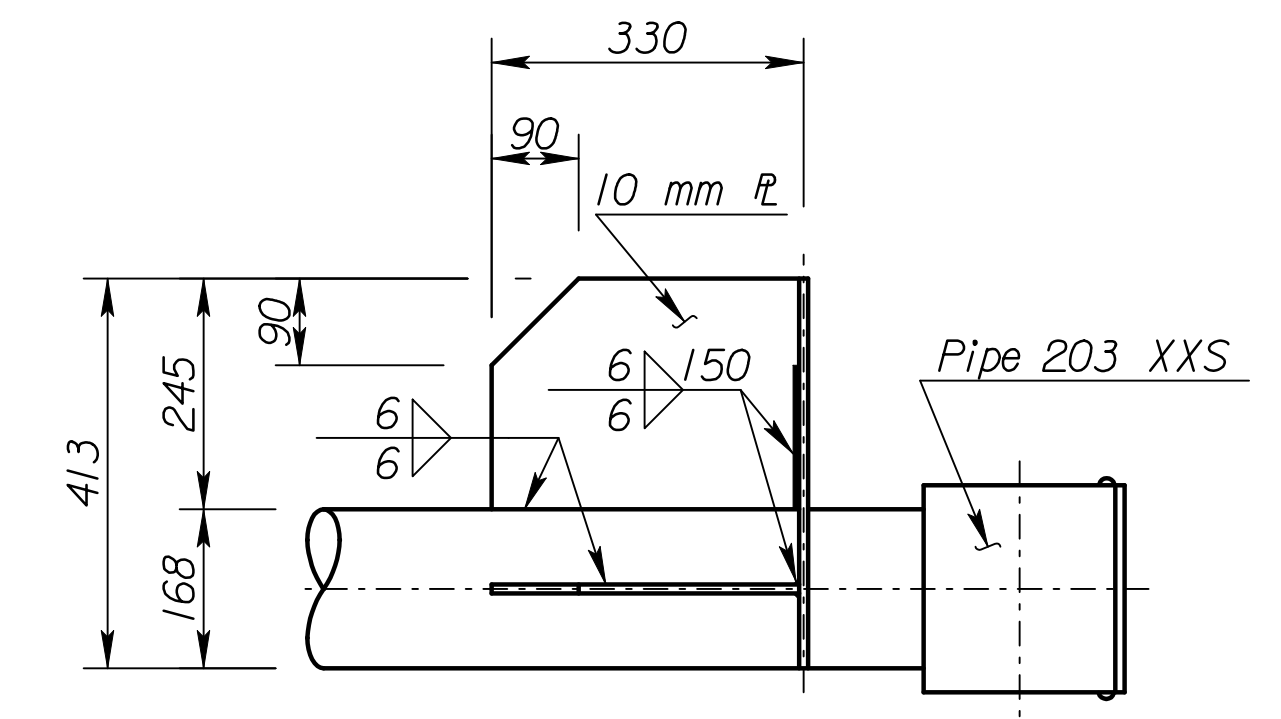


Side Elevation

**DETAILS END JOINT TYPE II**  
(showing welded and bolted connections mixed)

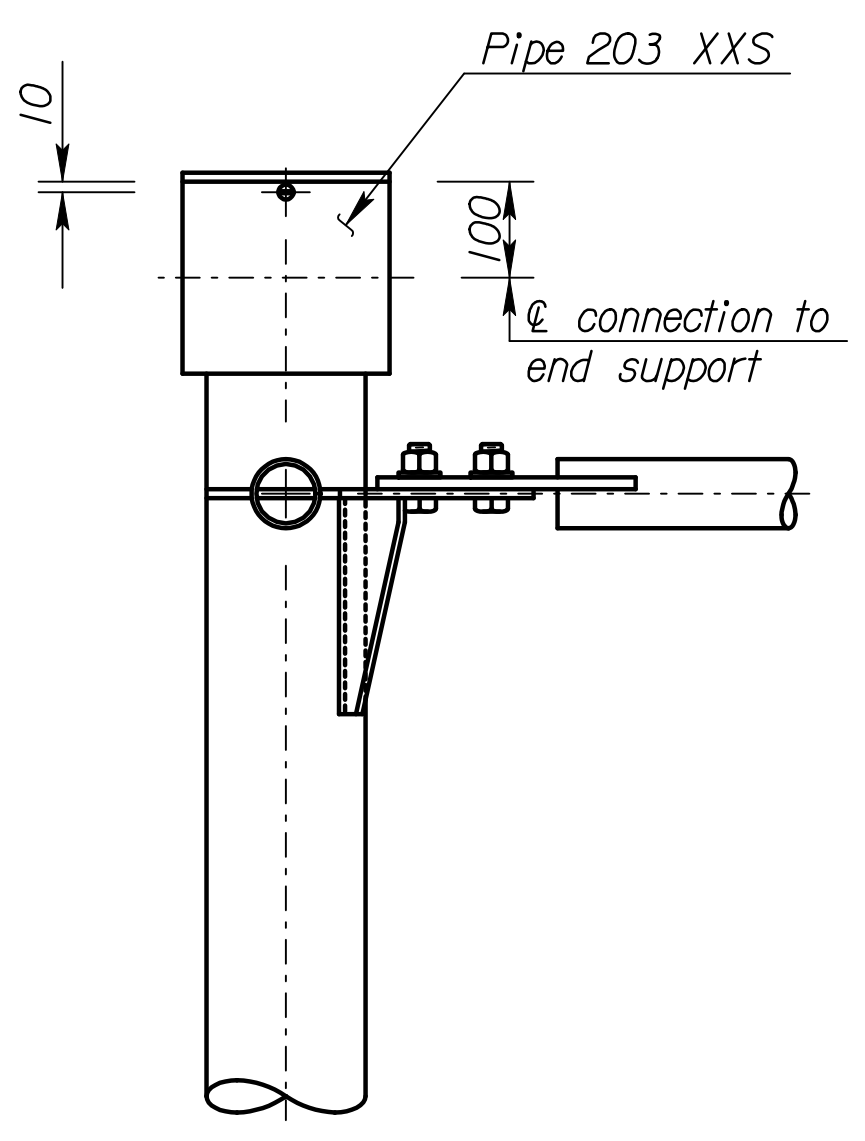


End View

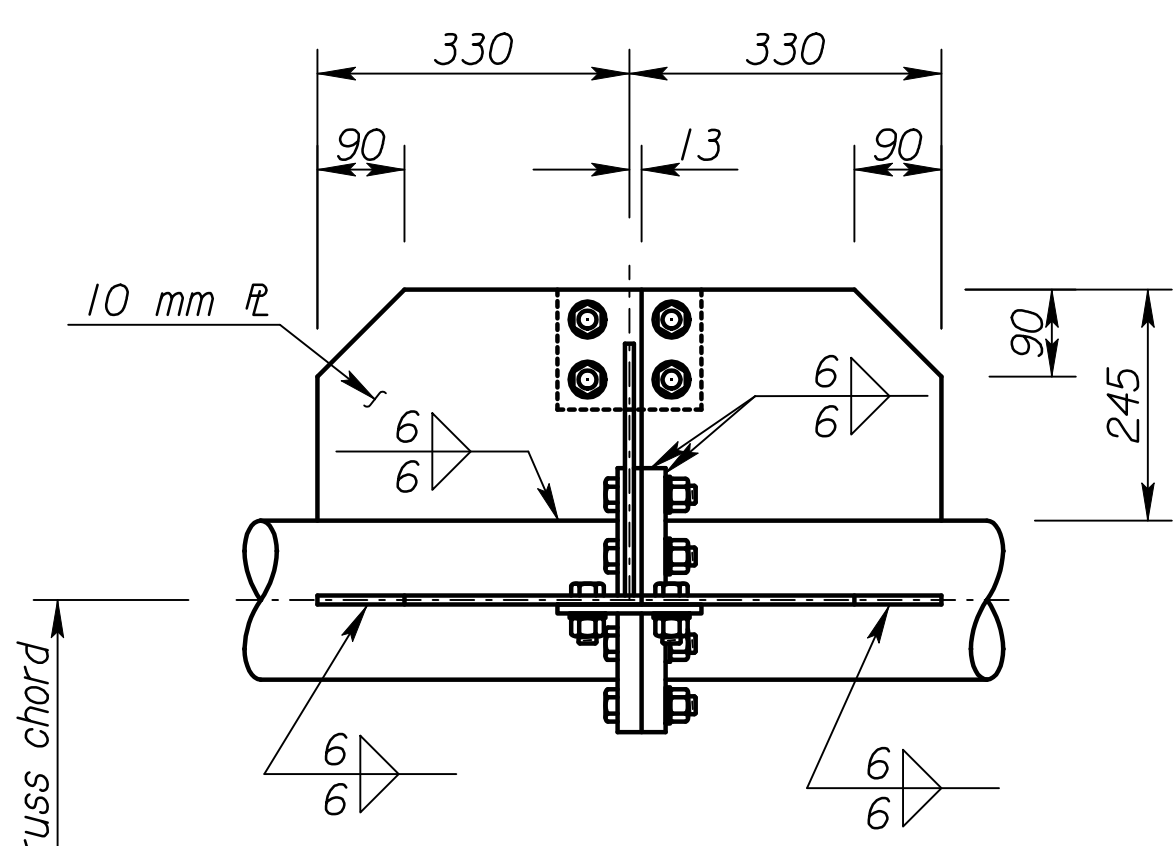


Side View

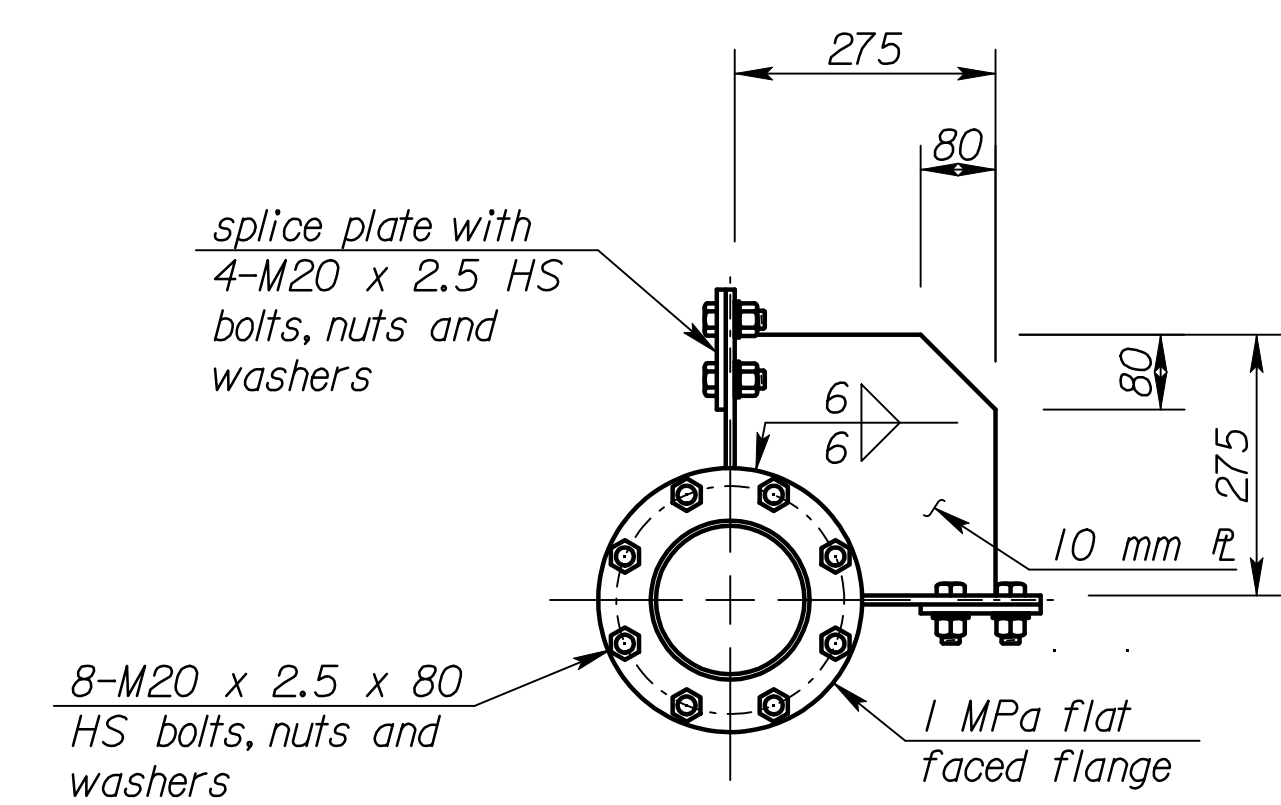
**TYPE II JOINT DETAILS**



Plan



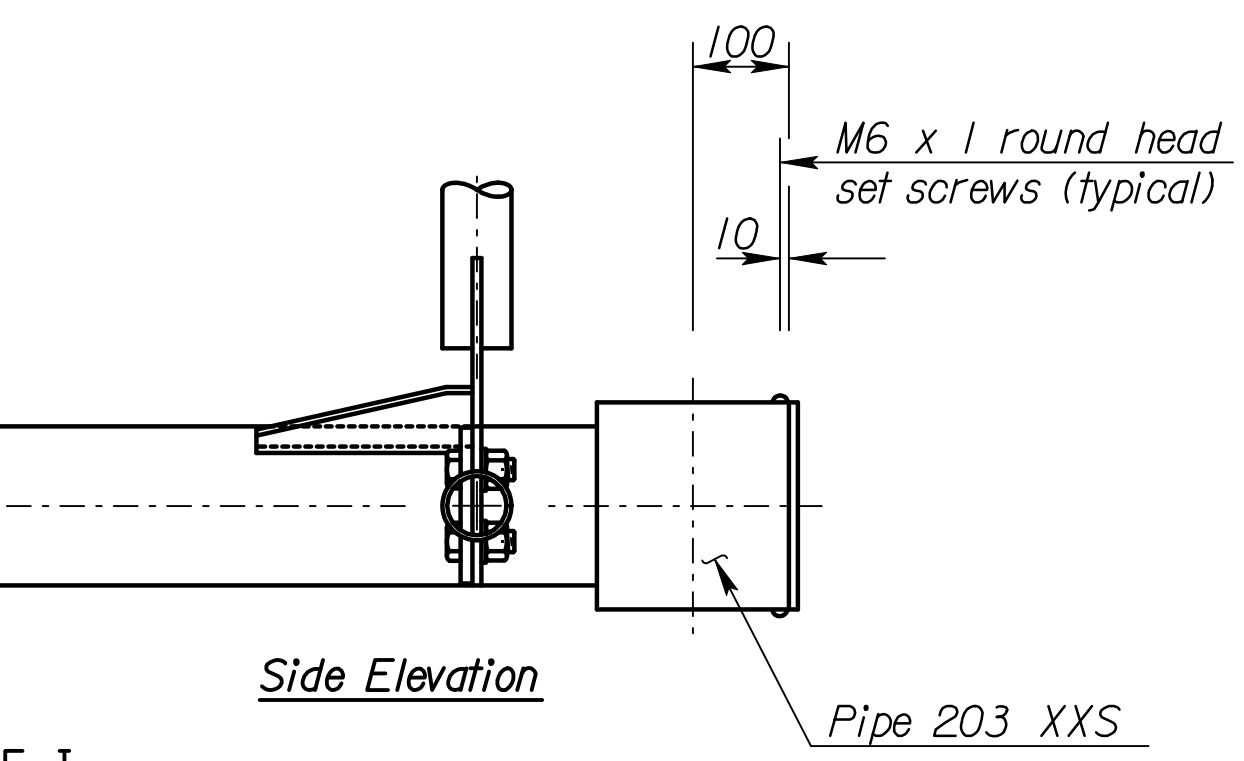
Side View



End View

**TRUSS SPLICE DETAILS**

splice plate with 4-M20 x 2.5 HS bolts, nuts and washers  
8-M20 x 2.5 x 80 HS bolts, nuts and washers  
1 MPa flat faced flange



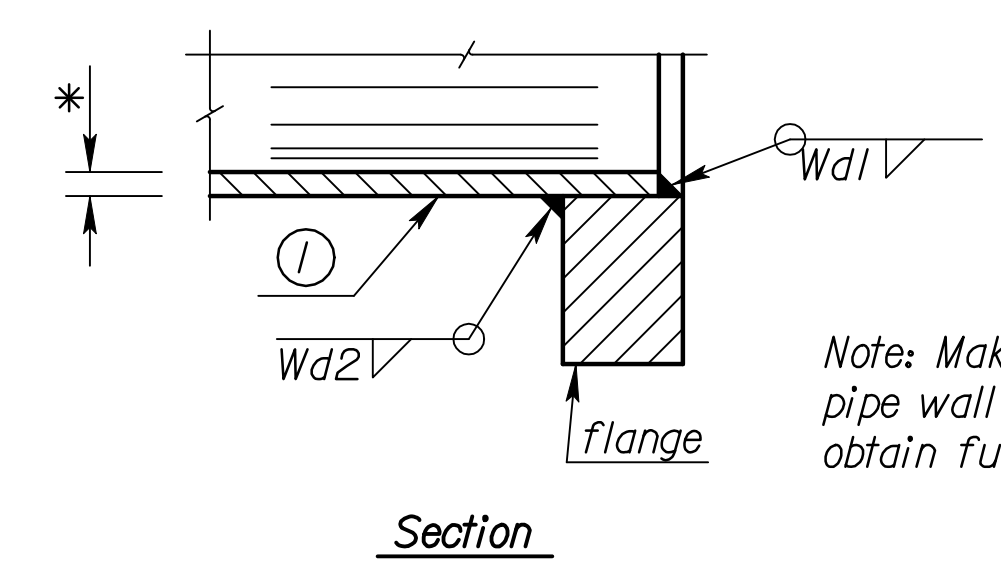
Side Elevation

**DETAILS END JOINT TYPE I**

(showing welded and bolted connections mixed)

Member ① * wall thickness	Fillet Weld size Wd2
4.78	5
5.56	6
7.11	8
8.74	8
11.0	10

\* See "Construction Layout" for wall thickness and "S"



Section

Note: Make Wd1 depth equal to pipe wall thickness, build out to obtain full throat.

**RECORD DRAWING**

**STEEL NOT USED**

NO.	DATE	REVISIONS	BY	APP'D
<b>KANSAS DEPARTMENT OF TRANSPORTATION</b> <b>STANDARD STRUCTURAL SIGN SUPPORTS</b> <b>SPAN TYPE OVERHEAD</b> <b>STEEL ALTERNATE</b> <b>TRUSS END JOINT AND SPLICE DETAILS</b> <b>SL15IC-04 81</b>				
DESIGNED	BFM	DETAILED	KFH	QUANTITIES
DESIGN CK.	RDH	DETAIL CK.	RDH	QUAN. CK.
CADD	DJE	CADD	DJE	CADD
CADD	LES	CADD	LES	CADD

Scale = 1/000  
12/1997/97362/As-Builts/dgn/s/Vol 4/SH 781-KDOT STD-Sign-151csi.dgn Last Rev: 10-4-07 By: gdr