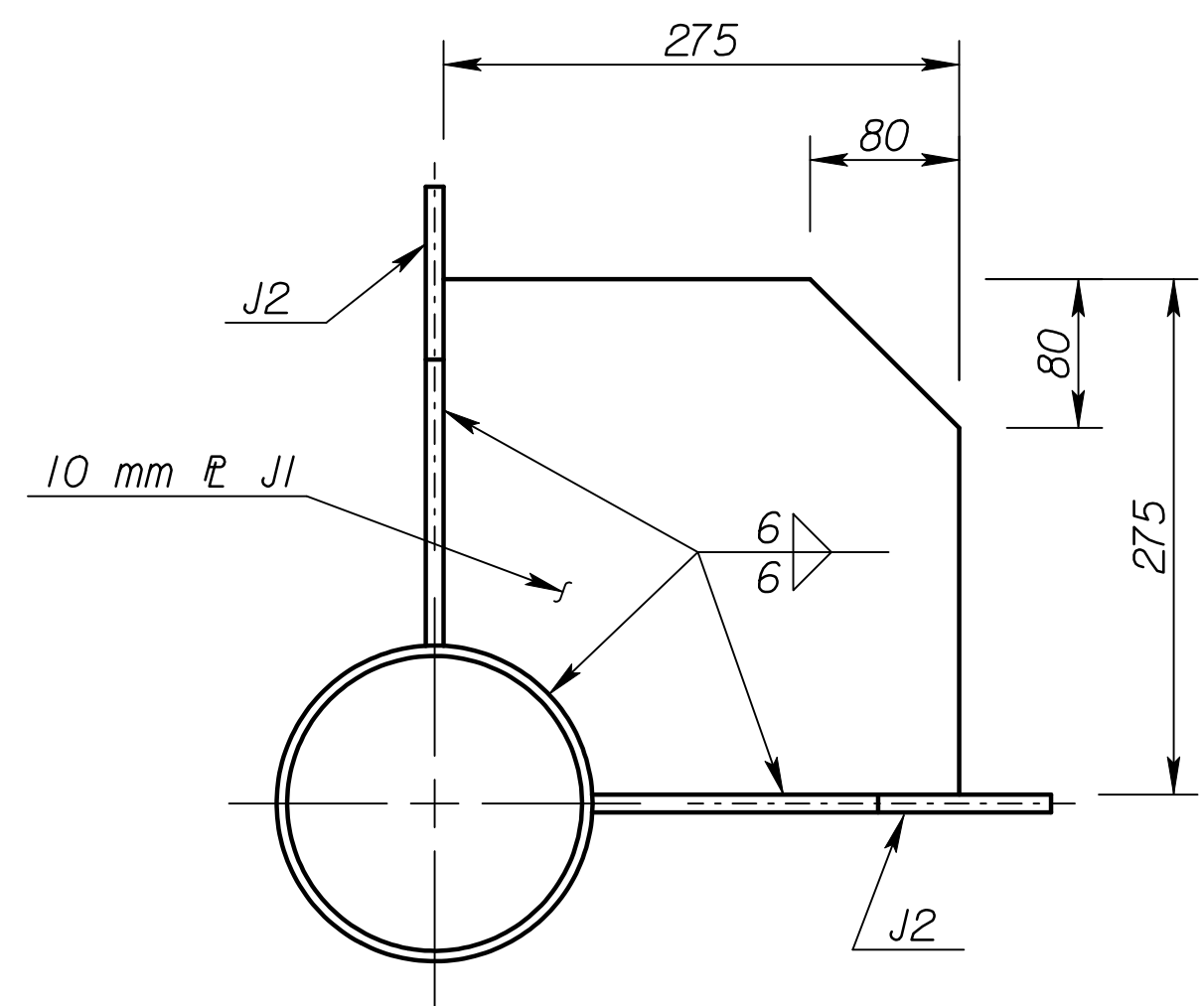
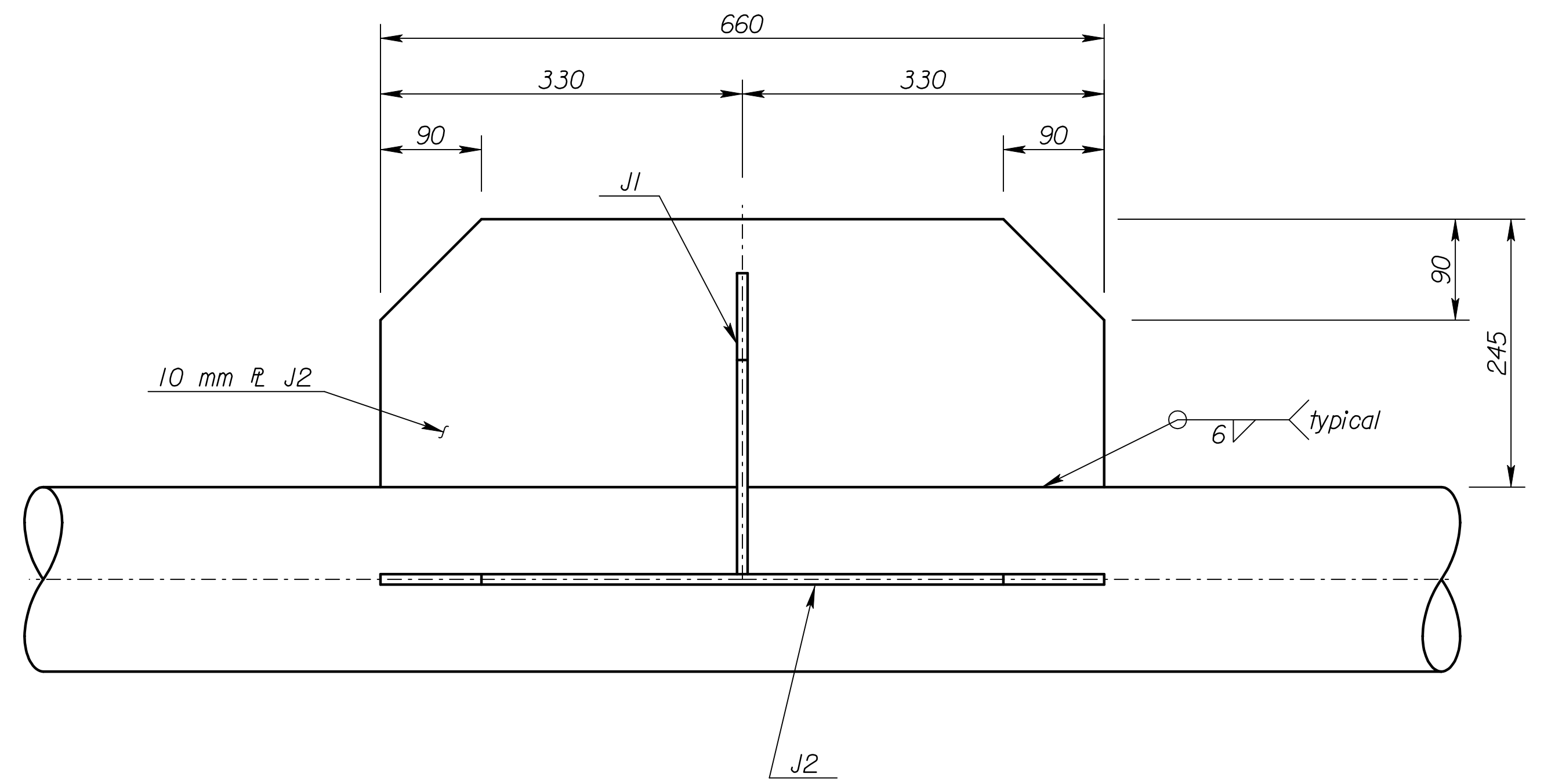


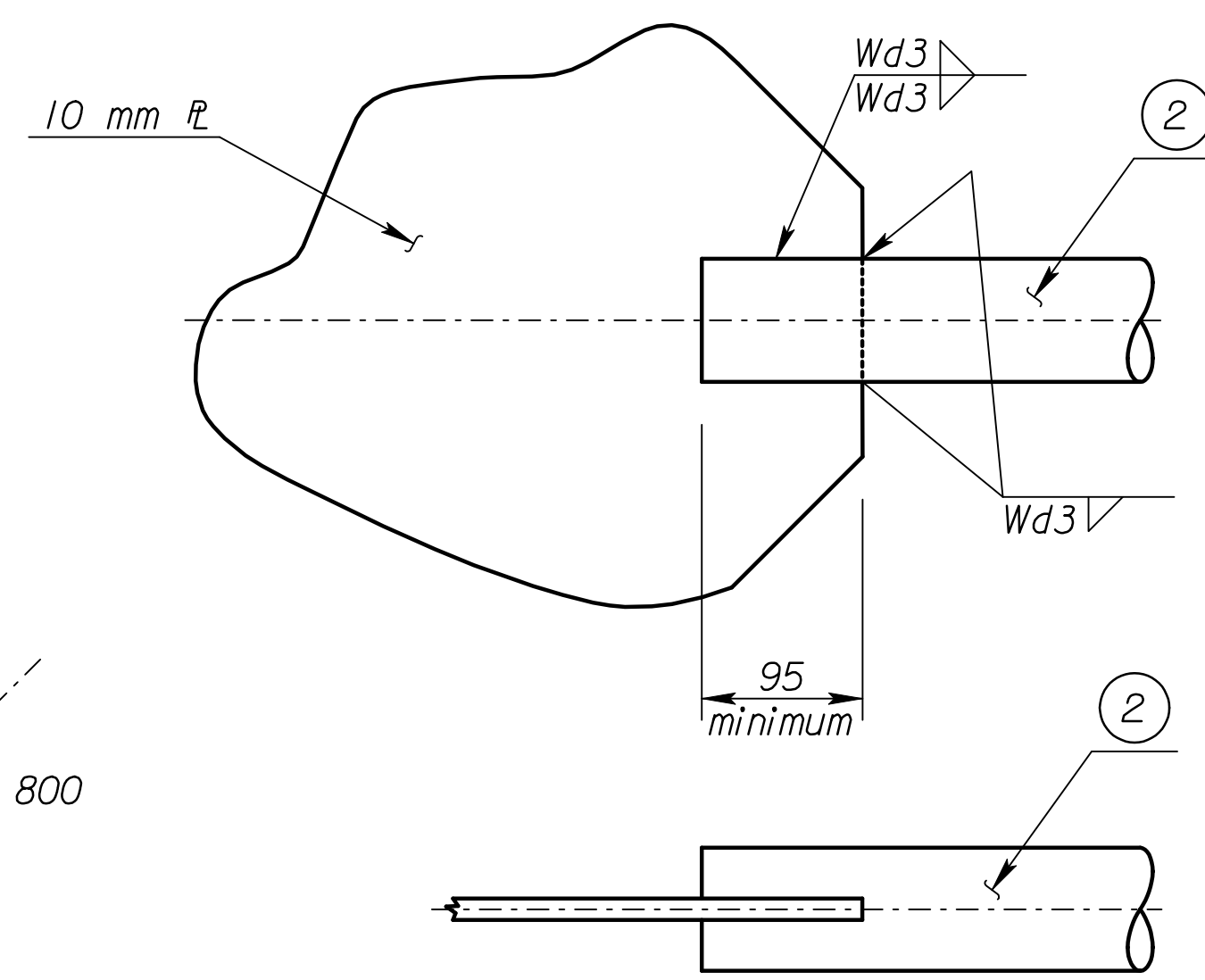
PLAN AT JOINT



DETAILS R J1



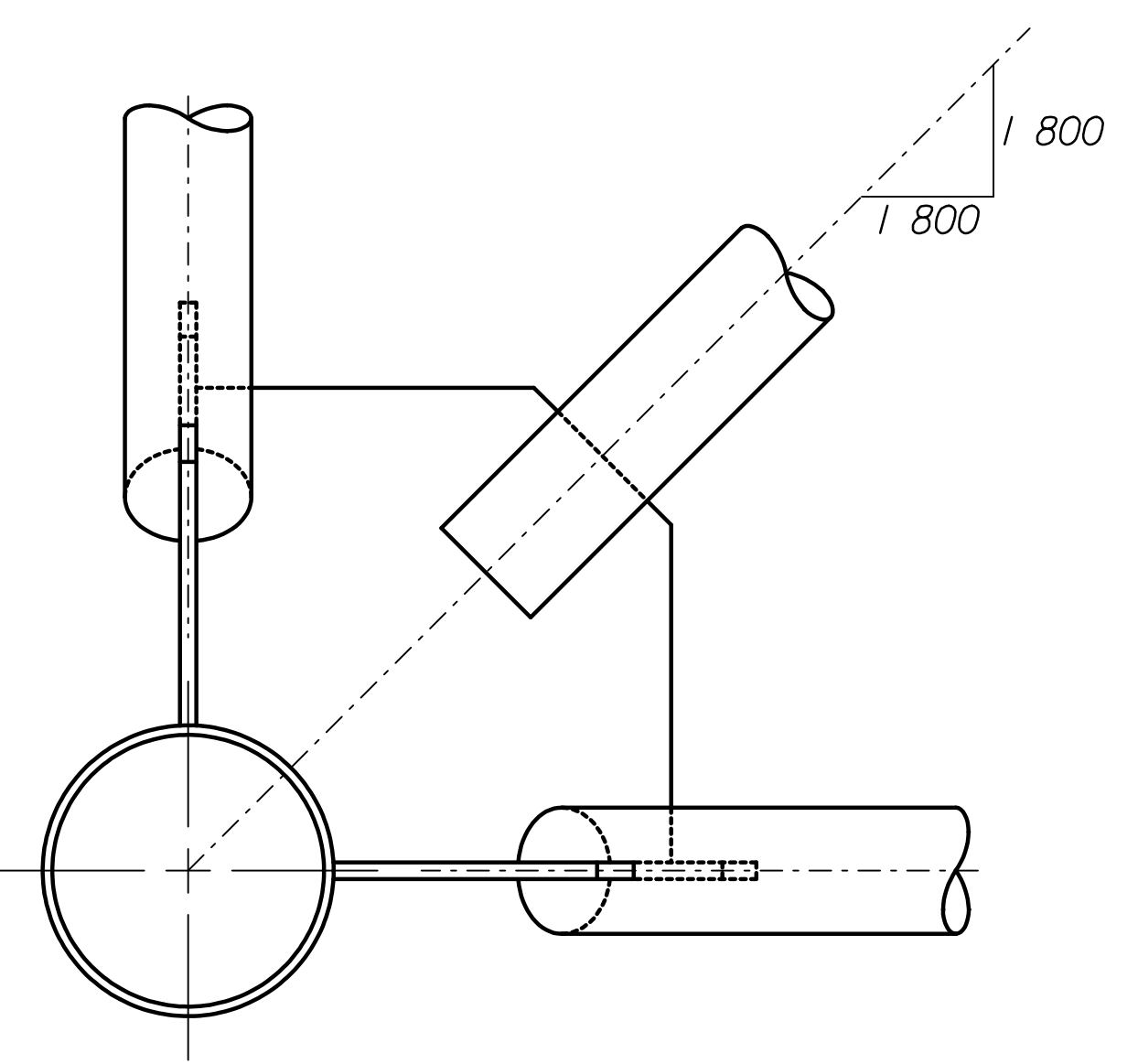
DETAILS R J2



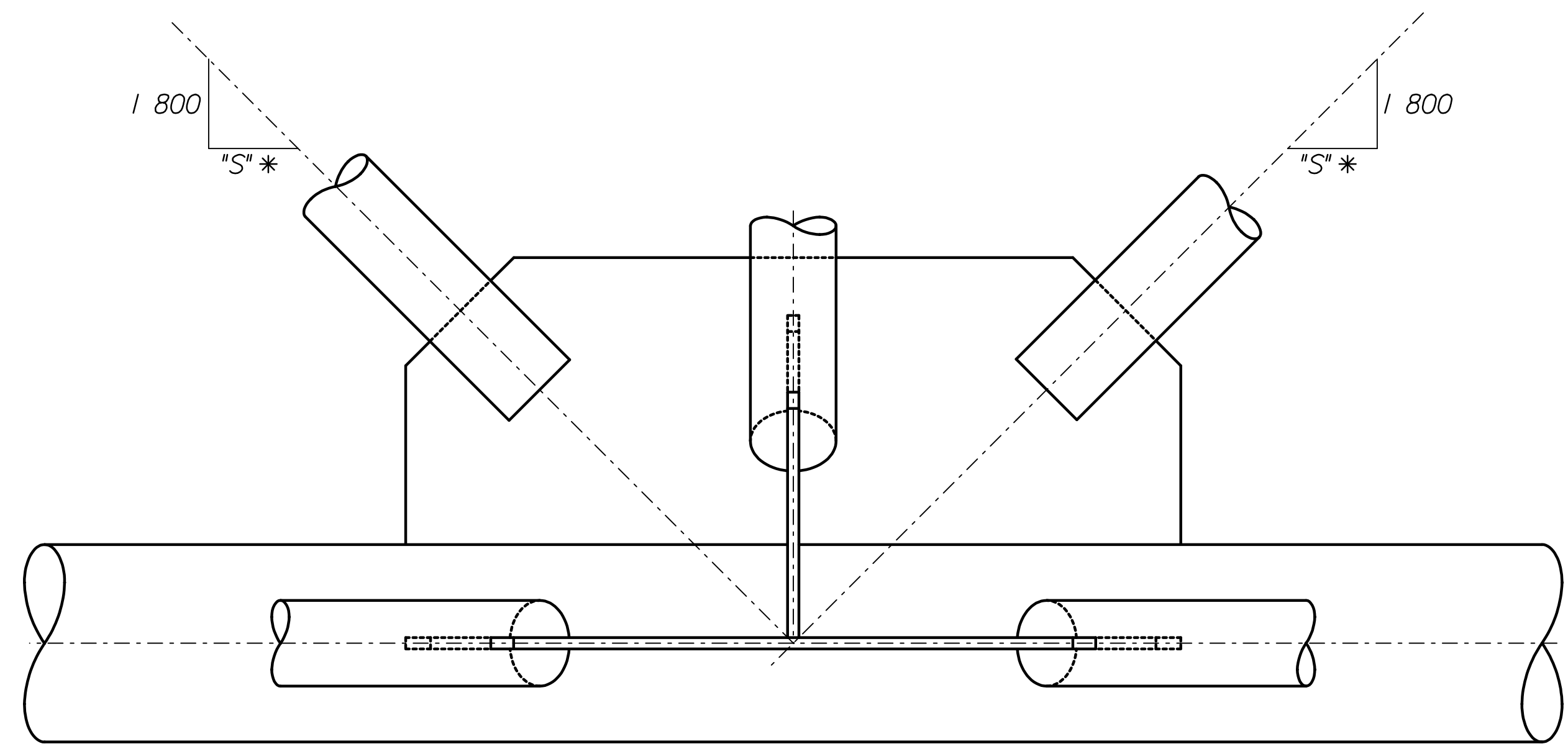
TYPICAL WELDED JOINT
Note: Welded and bolted options may be mixed for a given truss or at a given joint.

Member ② * wall thickness	Fillet Weld size Wd3
3.05	5
5.16	
7.01	

* See "Construction Layout" for wall thickness and "S"



SECTION NEAR JOINT



ELEVATION AT JOINT

TYPICAL DETAILS

STEEL NOT USED

NO.	DATE	REVISIONS	BY	APP'D
KANSAS DEPARTMENT OF TRANSPORTATION STANDARD STRUCTURAL SIGN SUPPORTS SPAN TYPE OVERHEAD STEEL ALTERNATE TRUSS JOINT DETAILS (WELDED OPTION) SL15IC-05 ST SEDGWICK CO.				
DESIGNER	BFM	DESIGNED	KFH	QUANTITIES
DESIGN CK.	RDH	DETAIL CK.	RDH	QUAN. CK.

RECORD DRAWING

Scale = 1/800
I:\1997\97362\As-Builts\dgn\Vol 4\Sh 782-KDOT STD-Sign-15\csi.dgn Last Rev: 10-4-07 Bjs.gdr