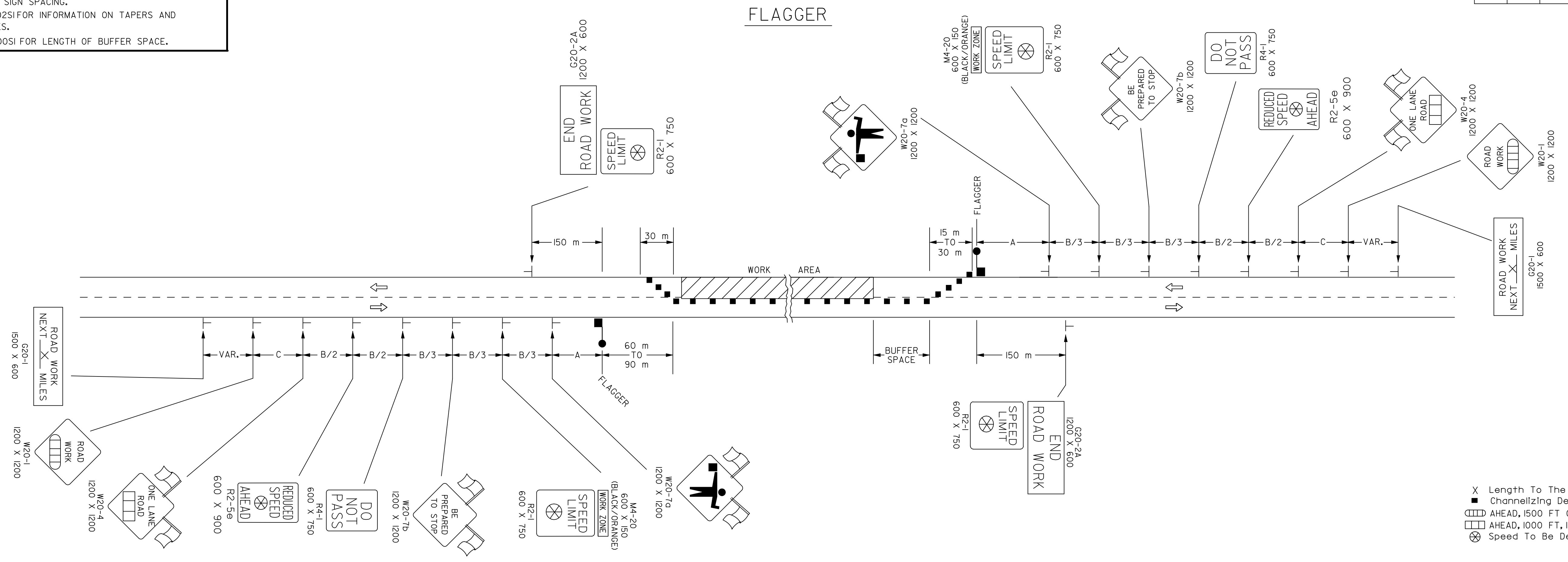
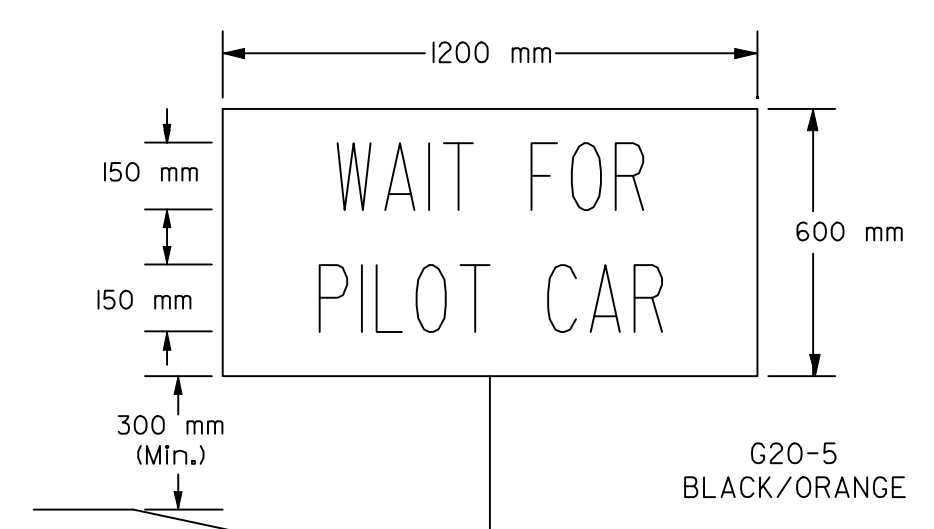


REFER TO STD. TETIOSI FOR ADDITIONAL INFORMATION ON TRAFFIC CONTROL SIGNS AND SIGN SPACING.
 REFER TO STD. TET02SI FOR INFORMATION ON TAPERS AND CHANNELIZING DEVICES.
 REFER TO STD. TET00SI FOR LENGTH OF BUFFER SPACE.



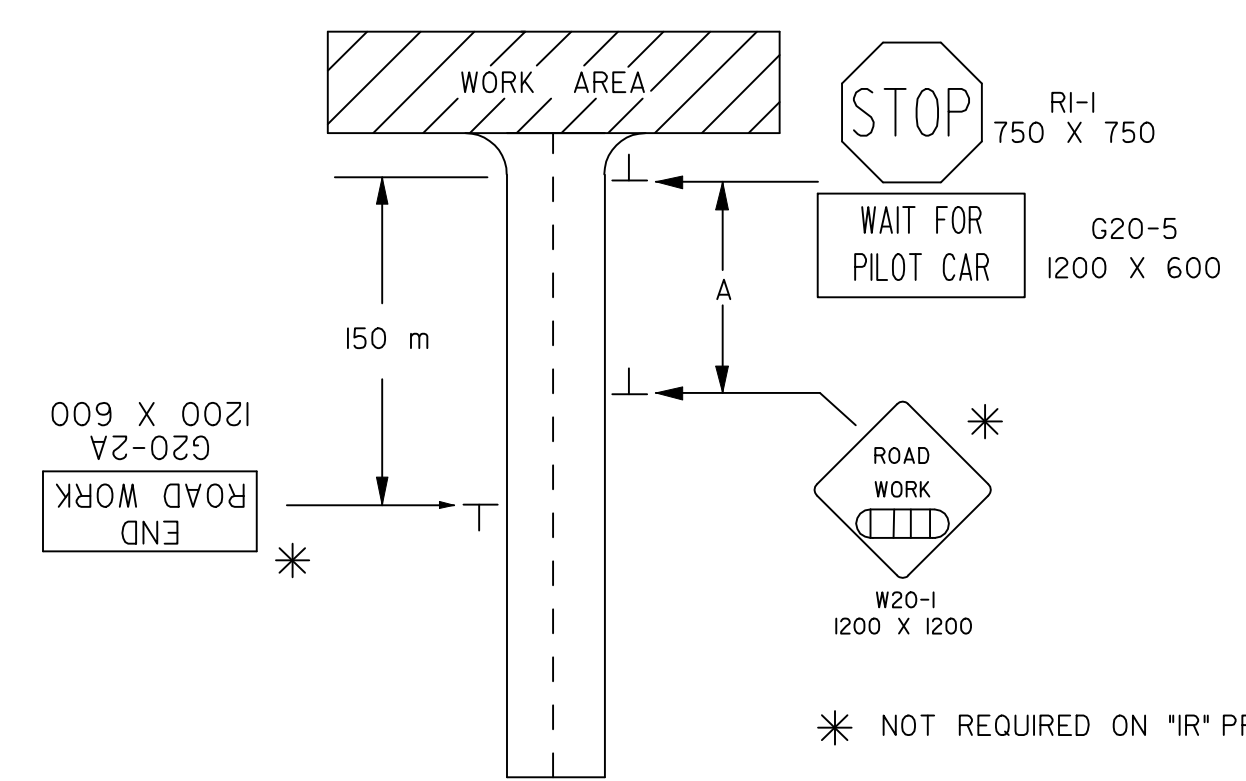
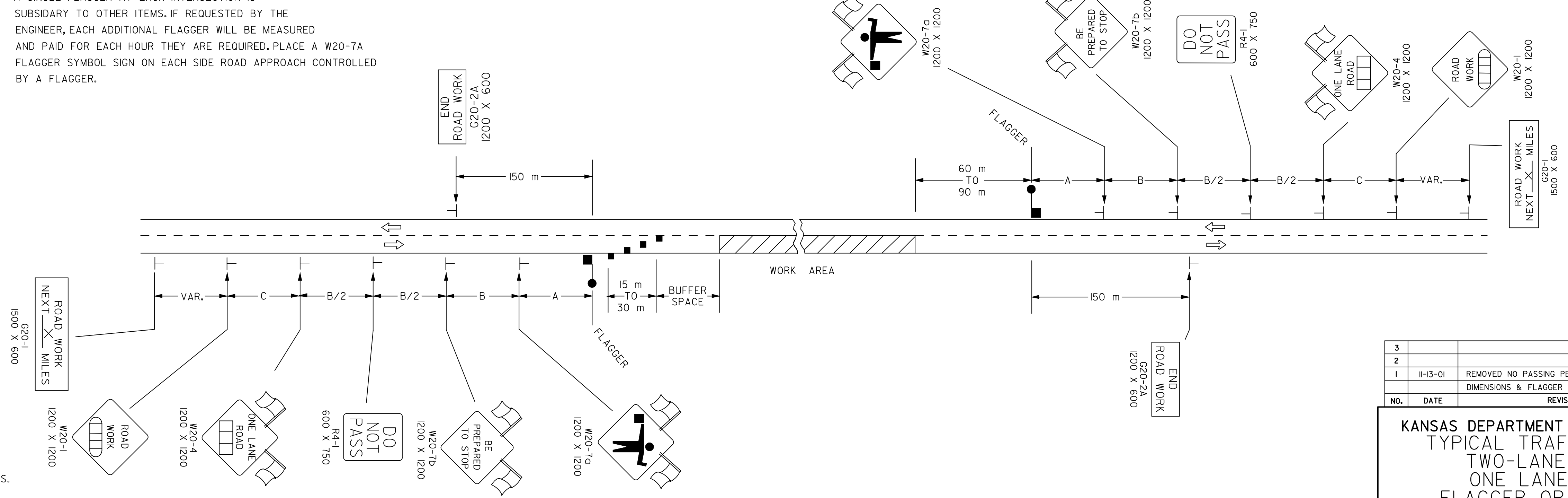
X Length To The Nearest Whole Mile
 ■ Channelizing Device
 □ AHEAD, 1500 FT OR 1 MILE
 □ AHEAD, 1000 FT, 1500 FT, OR 1/2 MILE
 ⊗ Speed To Be Determined By The Engineer



NOTE: PLACE A FLAGGER AT ALL HIGHWAYS AND RS ROUTE INTERSECTIONS IN THE WORK AREA. A SINGLE FLAGGER AT EACH INTERSECTION IS SUBSIDIARY TO OTHER ITEMS. IF REQUESTED BY THE ENGINEER, EACH ADDITIONAL FLAGGER WILL BE MEASURED AND PAID FOR EACH HOUR THEY ARE REQUIRED. PLACE A W20-7A FLAGGER SYMBOL SIGN ON EACH SIDE ROAD APPROACH CONTROLLED BY A FLAGGER.

SIGN SHALL BE PLACED IMMEDIATELY IN FRONT OF THE EXISTING STOP SIGN, A MINIMUM OF 150 mm BELOW THE BOTTOM OF THE STOP SIGN. THE SIGN SHOULD BE REMOVED OR COVERED WHEN THERE IS NO PILOT CAR.

FLAGGER AND PILOT CAR



* NOT REQUIRED ON "IR" PROJECTS.

TYPICAL SIGNING FOR MINOR SIDE ROAD APPROACH TO WORK AREA WITHOUT FLAGGER

3					
2					
1	11-13-01	REMOVED NO PASSING PENNANTS, CLARIFIED		JH	S.A.B
		DIMENSIONS & FLAGGER NOTES.			
NO.	DATE	REVISION	BY	APP'D	

KANSAS DEPARTMENT OF TRANSPORTATION
 TYPICAL TRAFFIC CONTROL
 TWO-LANE HIGHWAY
 ONE LANE CLOSED
 FLAGGER OR PILOT CAR
 TET30SI 9/1/00

DESIGNED	L.E.R.	APP'D	Michael P. McKenna
DETAIL CK.	DETAIL CK.	QUANTITIES	QUAN. CK.
TRACED	TRACED		

DSNR: OPER: JGP Scale = 1000
 1/1997/97362/As-Builts/dgn/s/Vol 4/SN 830-KDOT STD-TC-16730si.dgn Last Rev: 10-5-07 Bjr: gdr