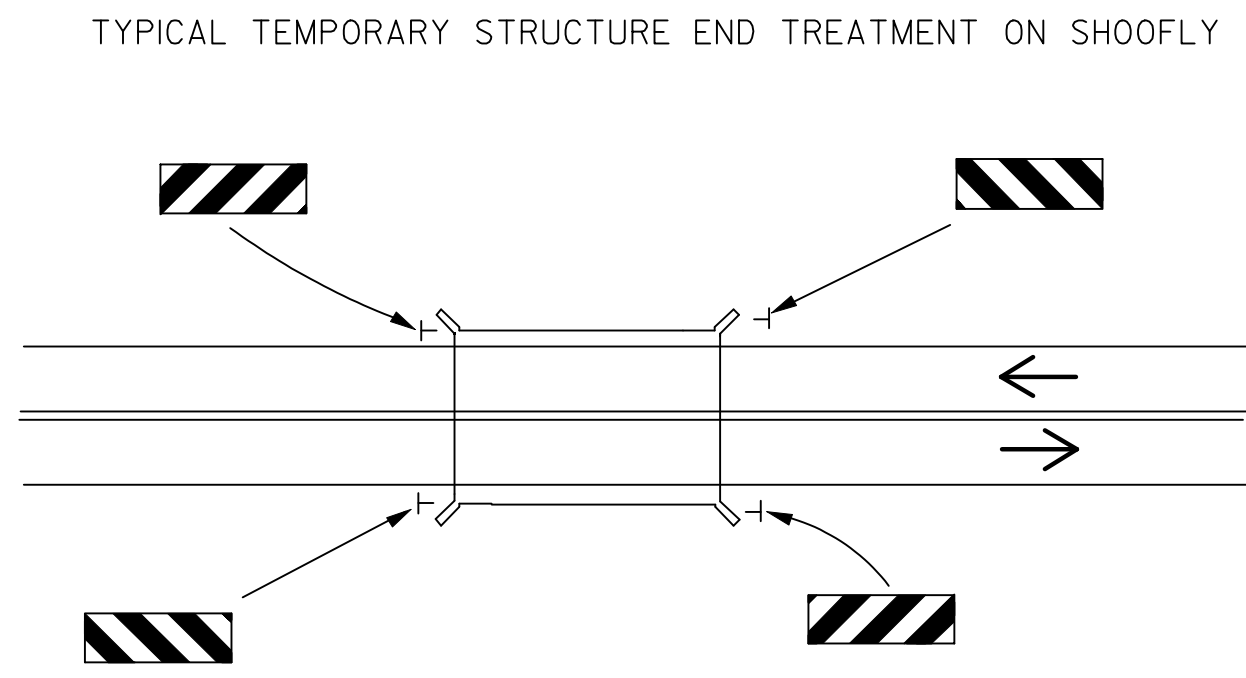
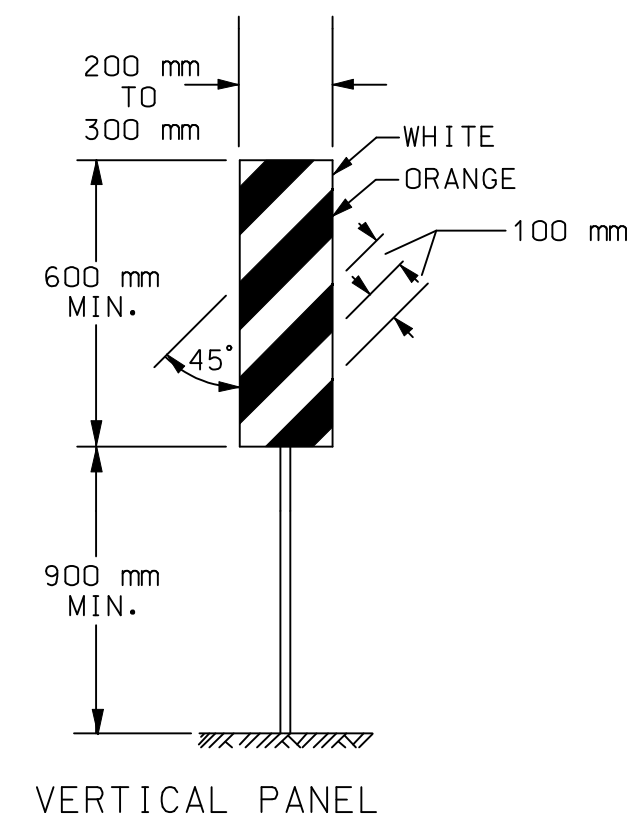


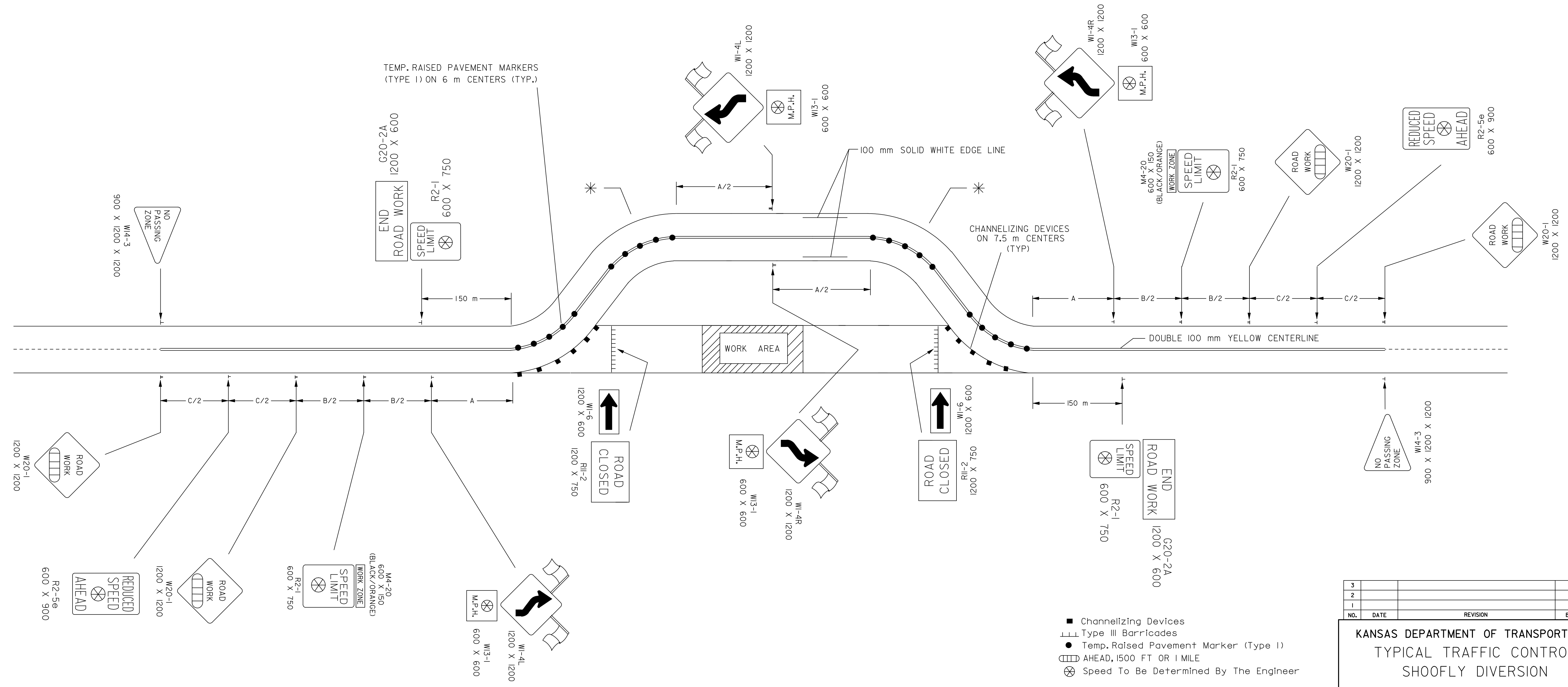
REFER TO STD. TETIOSI FOR ADDITIONAL INFORMATION ON TRAFFIC CONTROL SIGNS AND SIGN SPACING.  
 REFER TO STD. TET02SIFOR INFORMATION ON TAPERS AND CHANNELIZING DEVICES.  
 REFER TO STD. TET00SI FOR LENGTH OF BUFFER SPACE.



\* Note: Black on Orange 600 mm X 750 mm Chevron signs (W1-8) shall be mounted back to back on the outside edge of shoofly curves with a radius of 300 m or less at the spacing shown below. A Minimum of 3 chevrons should be installed per curve.

SUGGESTED CHEVRON SPACING	
CURVE RADIUS	MAX. SPACING
300 m - 225 m	40 m
225 m - 135 m	30 m
LESS THAN 135 m	20 m

THE ENTIRE AREA OF VERTICAL PANELS SHALL BE FULLY REFLECTORIZED WITH TYPE III HIGH PERFORMANCE RETROREFLECTIVE SHEETING. VERTICAL PANELS USED ON ROADWAYS WITH A SPEED LIMIT OF 45 MPH OR GREATER SHALL HAVE A MINIMUM OF 0.175 SQ m OF RETROREFLECTIVE AREA FACING TRAFFIC. THE STRIPES SHALL SLOPE DOWNWARD TO THE TRAFFIC SIDE FOR CHANNELIZING.



- Channelizing Devices
- ▬ Type III Barricades
- Temp. Raised Pavement Marker (Type I)
- ▭ AHEAD, 1500 FT OR 1 MILE
- ⊗ Speed To Be Determined By The Engineer

3					
2					
1					
NO.	DATE	REVISION	BY	APP'D	

**KANSAS DEPARTMENT OF TRANSPORTATION**  
 TYPICAL TRAFFIC CONTROL  
 SHOOFLY DIVERSION

TE736SI 9/1/00

DESIGNED	L.E.R.	9-1-00	APP'D	Michael P. McKenna
DESIGN CK.	DETAIL CK.	QUAN. CK.	TRACED	TRACE CK.