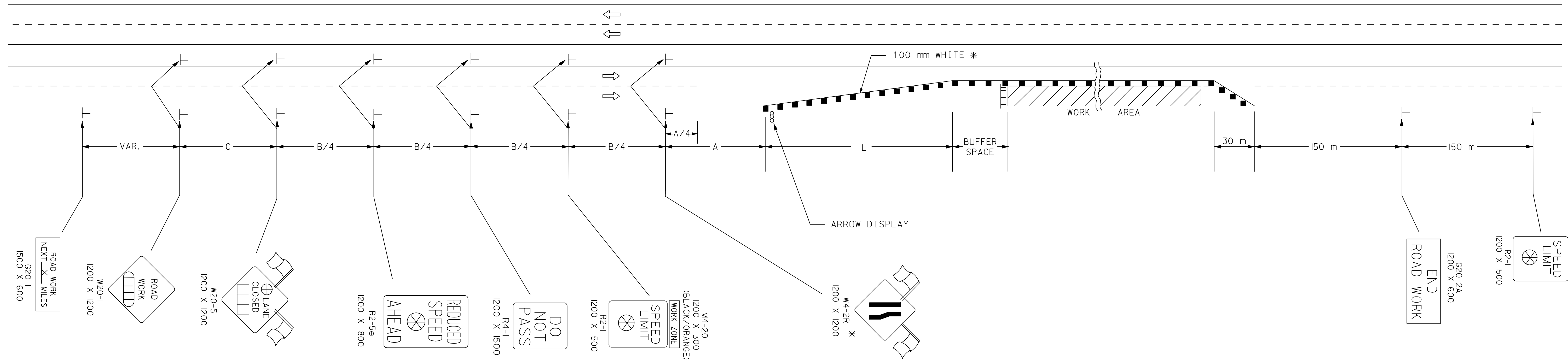


FHWA REGION NO.	STATE	PROJECT NO.	YEAR	SHEET NO.	TOTAL SHEETS
7	KANSAS	54-87 K-6657-01	2002	833	1122

REFER TO STD. TE710SI FOR ADDITIONAL INFORMATION ON TRAFFIC CONTROL SIGNS AND SIGN SPACING.  
 REFER TO STD. TE702SI FOR INFORMATION ON TAPERS AND CHANNELIZING DEVICES.  
 REFER TO STD. TE700SI FOR LENGTH OF BUFFER SPACE.



LEFT-SIDE SIGNS SHALL BE OMITTED FOR A FOUR-LANE UNDIVIDED HIGHWAY.

\*FOR LEFT LANE CLOSURES USE W4-2L AND YELLOW EDGE LINE ALONG CHANNELIZING DEVICES.

A TRAILER OR TRUCK WITH AN ARROW DISPLAY MAY BE USED DURING DAYTIME IN PLACE OF THE ARROW DISPLAY. THE TRUCK SHOULD BE LOCATED BETWEEN THE BUFFER SPACE AND THE WORK AREA.

- Channelizing Devices
- ⊥ Type III Barricades
- ⊞ AHEAD, 1500 FT OR 1 MILE
- ⊗ Speed To Be Determined By The Engineer
- ⊞ AHEAD, 1000 FT, 1500 FT OR 1/2 MILE
- X Length To The Nearest Whole Mile
- ⊕ RIGHT OR LEFT

DSNR: OPER: JGP Scale = 1/8" = 1'-0"  
 1/1997/97362/As-Builts/dgn/s/Vol 4/SH 833-KDOT STD-TC-TE744SI.dgn Last Rev: 10-5-07 By: gdr

3					
2					
1					
NO.	DATE	REVISION	BY	APP'D	

**KANSAS DEPARTMENT OF TRANSPORTATION**  
 TYPICAL TRAFFIC CONTROL  
 FOUR-LANE HIGHWAY  
 ONE LANE CLOSED

TE744SI 9/1/00

FHWA APPROVAL	9-1-00	APP'D	Michael P. McKenna
DESIGNED	L.E.R.	DETAILED	B.A.H.
DESIGN CK.	DETAIL CK.	QUANTITIES	TRACED
		QUAN. CK.	TRACE CK.