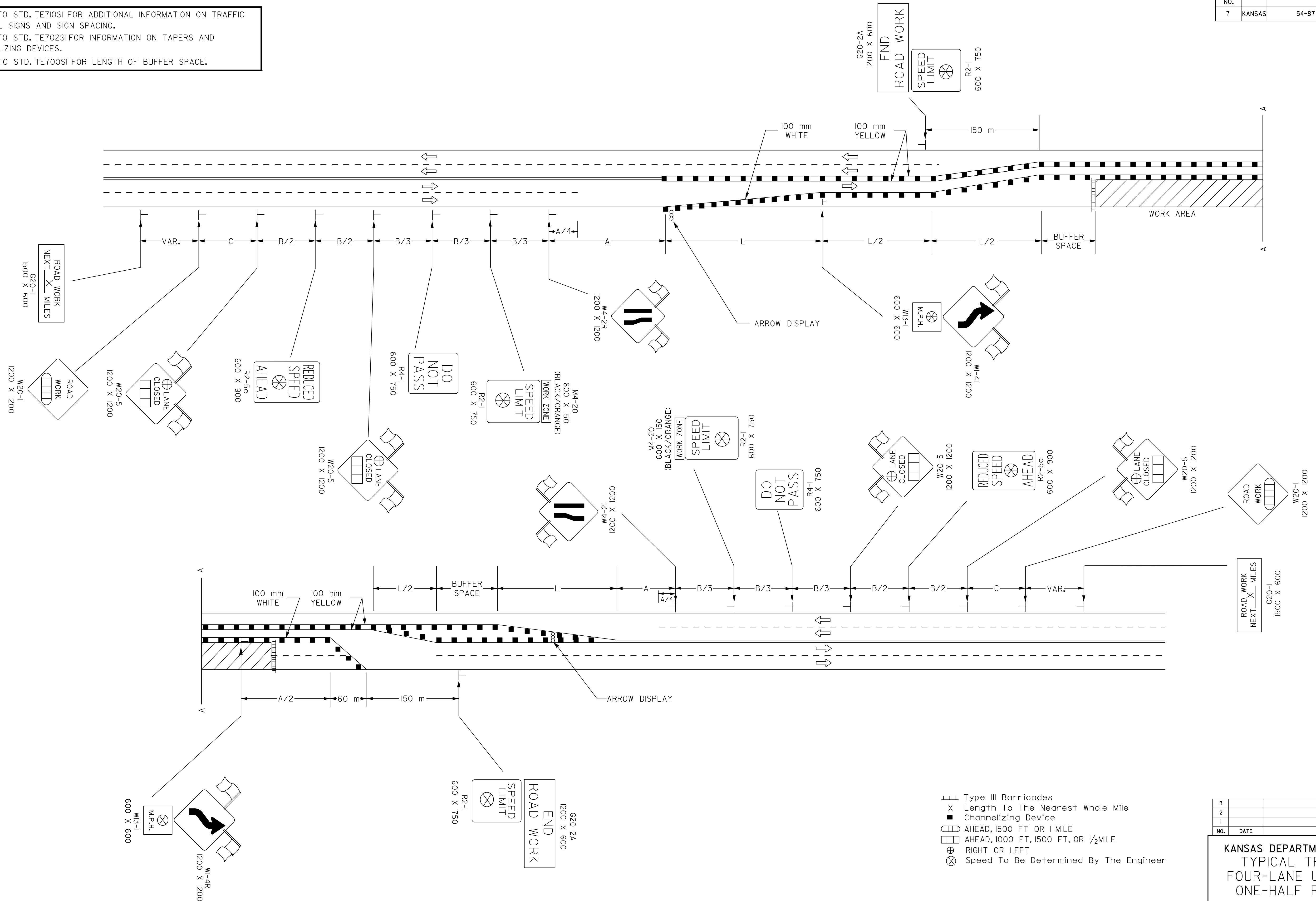


FHWA REGION NO.	STATE	PROJECT NO.	YEAR	SHEET NO.	TOTAL SHEETS
7	KANSAS	54-87 K-6657-01	2002	834	1122

REFER TO STD. TE710SI FOR ADDITIONAL INFORMATION ON TRAFFIC CONTROL SIGNS AND SIGN SPACING.
REFER TO STD. TE702SI FOR INFORMATION ON TAPERS AND CHANNELIZING DEVICES.
REFER TO STD. TE700SI FOR LENGTH OF BUFFER SPACE.



- ||| Type III Barricades
- X Length To The Nearest Whole Mile
- Channelizing Device
- ⊞ AHEAD, 1500 FT OR 1 MILE
- ⊞ AHEAD, 1000 FT, 1500 FT, OR 1/2 MILE
- ⊕ RIGHT OR LEFT
- ⊗ Speed To Be Determined By The Engineer

DSMR: OPER: JGP Scale = 1/8" = 1'-0"
L: 1/1997/97362/As-Builts/dgn/s/Vol 4/SH 834-KDOT STD-TC-TE748SI.dgn Last Rev: 10-5-07 By: gdr

3					
2					
1					
NO.	DATE	REVISION	BY	APP'D	

KANSAS DEPARTMENT OF TRANSPORTATION
TYPICAL TRAFFIC CONTROL
FOUR-LANE UNDIVIDED HIGHWAY
ONE-HALF ROADWAY CLOSED

TE748SI 9/1/00

FHWA APPROVAL	9-1-00	APP'D	Michael P. McKenna
DESIGNED	L.E.R.	DETAILED	B.A.H.
DESIGN CK.	DETAIL CK.	QUANTITIES	TRACED
		QUAN. CK.	TRACE CK.