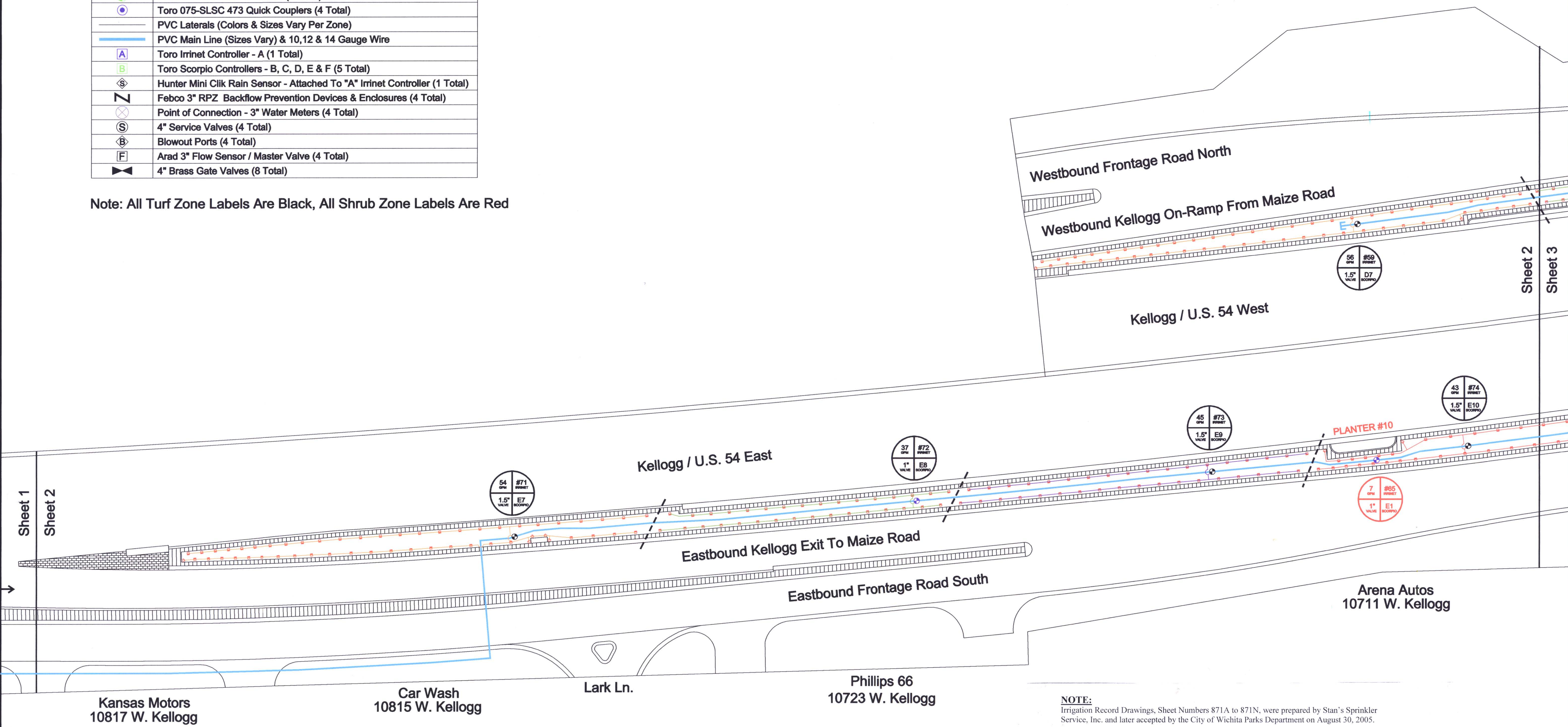


| FHWA REGION NO. | STATE | PROJECT NO. | YEAR | SHEET NO. | TOTAL SHEETS |
|-----------------|--------|-----------------|------|-----------|--------------|
| 7 | KANSAS | 54-87 K-6657-01 | 2002 | 871B | 1122 |

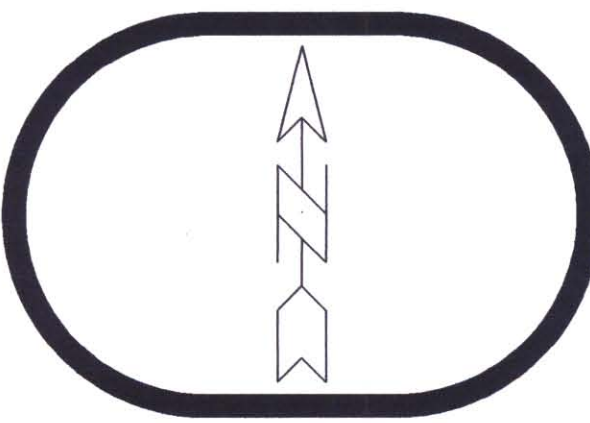
License #: 1840

| Symbol | Irrigation Equipment |
|--------|--|
| | Toro 570Z 4" Pop-Up Series Spray Heads (1,595 Total) |
| | Toro 340 Series Rotors (489 Total) |
| | Toro 1" P-220 Electric Valves (24 Total) |
| | Toro 1-1/2" P-220 Electric Valves (59 Total) |
| | Toro 2" P-220 Electric Valves (1 Total) |
| | Toro 075-SLSC 473 Quick Couplers (4 Total) |
| | PVC Laterals (Colors & Sizes Vary Per Zone) |
| | PVC Main Line (Sizes Vary) & 10,12 & 14 Gauge Wire |
| | Toro Irrinet Controller - A (1 Total) |
| | Toro Scorpio Controllers - B, C, D, E & F (5 Total) |
| | Hunter Mini Click Rain Sensor - Attached To "A" Irrinet Controller (1 Total) |
| | Febco 3" RPZ Backflow Prevention Devices & Enclosures (4 Total) |
| | Point of Connection - 3" Water Meters (4 Total) |
| | 4" Service Valves (4 Total) |
| | Blowout Ports (4 Total) |
| | Arad 3" Flow Sensor / Master Valve (4 Total) |
| | 4" Brass Gate Valves (8 Total) |

Note: All Turf Zone Labels Are Black, All Shrub Zone Labels Are Red



Irrigation As-Built



Project:
West Kellogg Flyover: Maize To Tyler - Turf Areas

Sheet 2 of 13

Drawn By:
P.P.

Checked By:
D.D.

Scale:
1"=30'

Date:
8/29/05

NOTE:
Irrigation Record Drawings, Sheet Numbers 871A to 871N, were prepared by Stan's Sprinkler Service, Inc. and later accepted by the City of Wichita Parks Department on August 30, 2005.