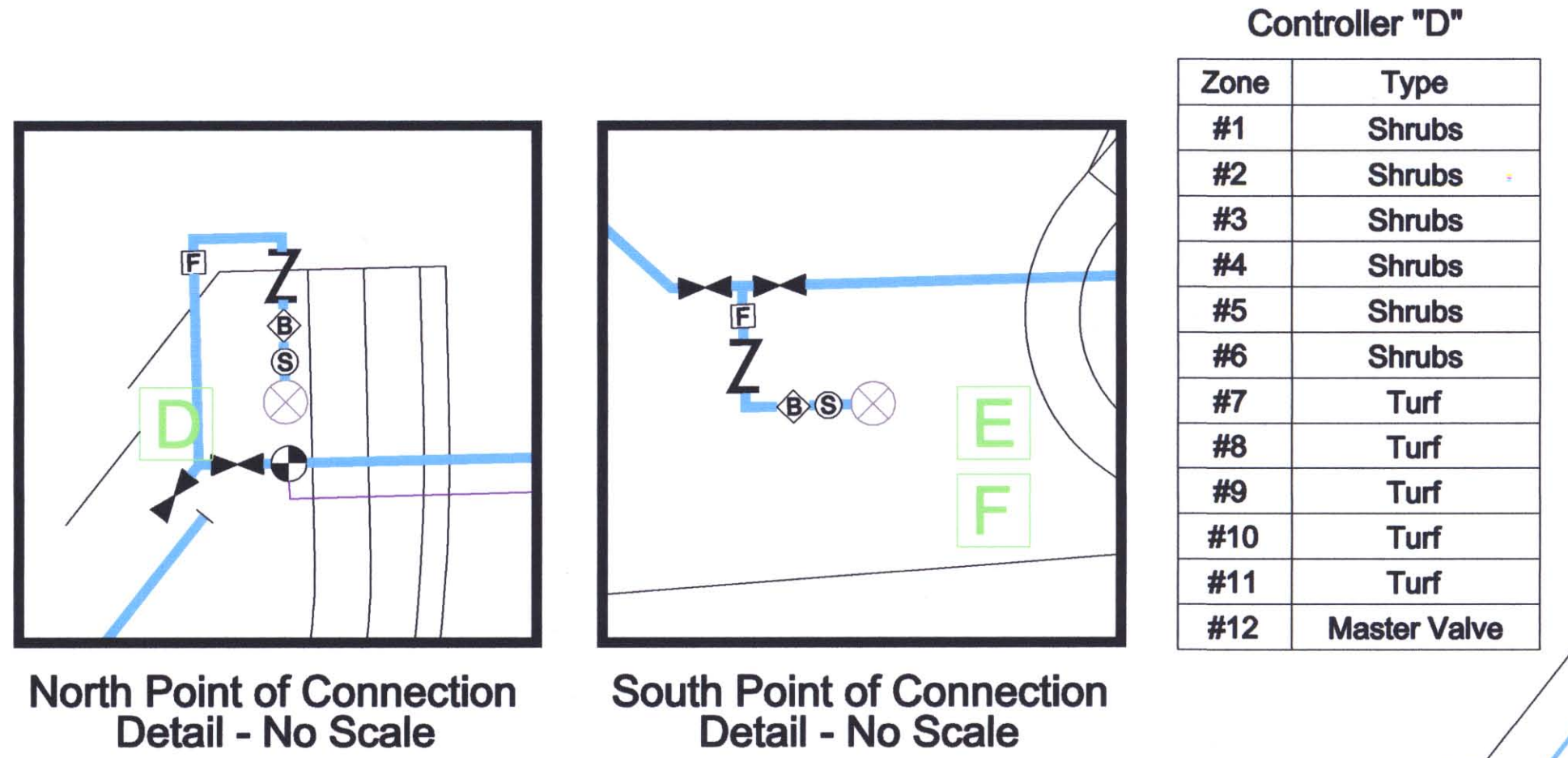


FHWA REGION NO.	STATE	PROJECT NO.	YEAR	SHEET NO.	TOTAL SHEETS
7	KANSAS	54-87 K-6657-01	2002	871C	1122

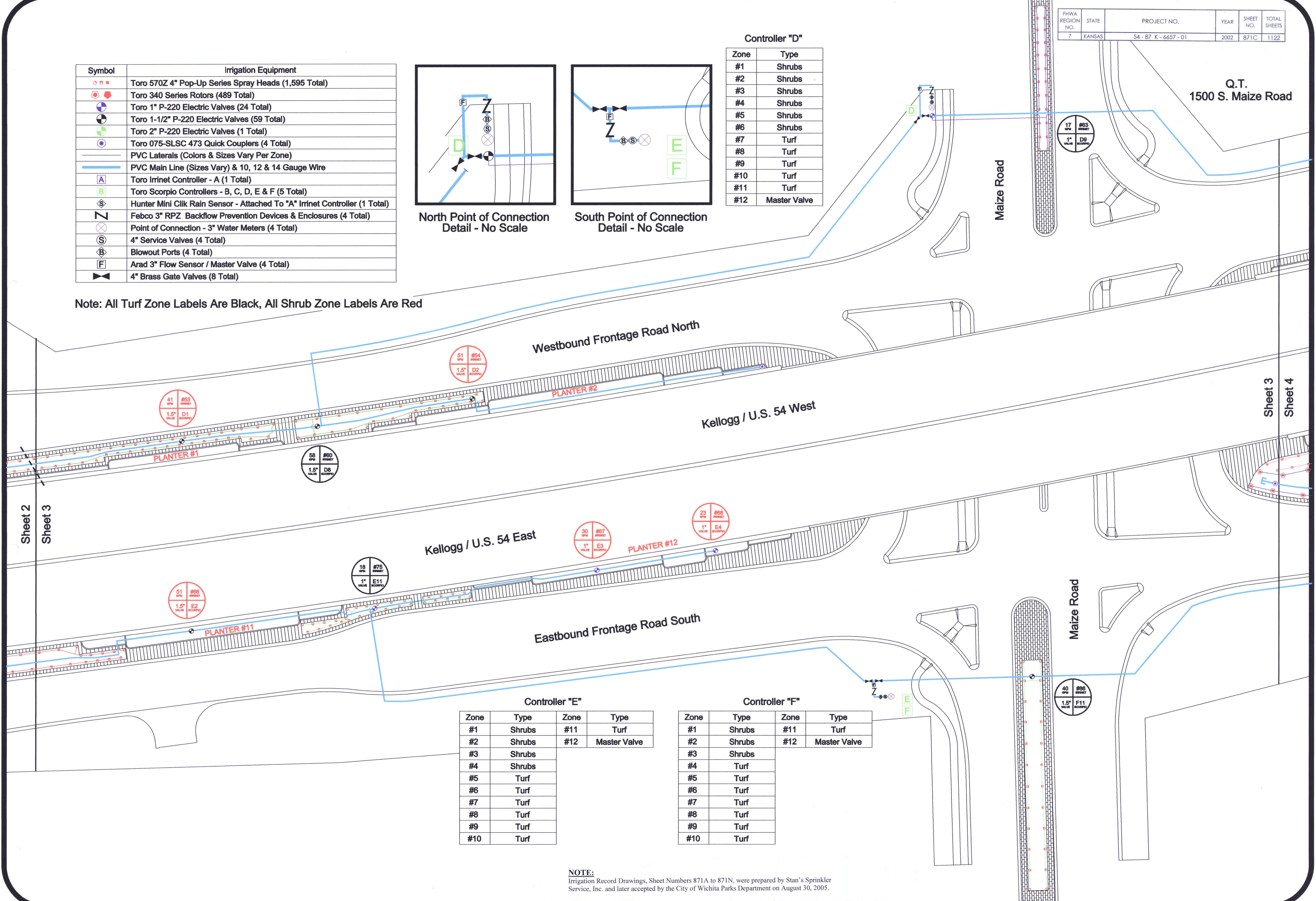
Symbol	Irrigation Equipment
	Toro 570Z 4" Pop-Up Series Spray Heads (1,595 Total)
	Toro 340 Series Rotors (489 Total)
	Toro 1" P-220 Electric Valves (24 Total)
	Toro 1-1/2" P-220 Electric Valves (59 Total)
	Toro 2" P-220 Electric Valves (1 Total)
	Toro 075-SLSC 473 Quick Couplers (4 Total)
	PVC Laterals (Colors & Sizes Vary Per Zone)
	PVC Main Line (Sizes Vary) & 10, 12 & 14 Gauge Wire
	Toro Irrinet Controller - A (1 Total)
	Toro Scorpio Controllers - B, C, D, E & F (5 Total)
	Hunter Mini Click Rain Sensor - Attached To "A" Irrinet Controller (1 Total)
	Febco 3" RPZ Backflow Prevention Devices & Enclosures (4 Total)
	Point of Connection - 3" Water Meters (4 Total)
	4" Service Valves (4 Total)
	Blowout Ports (4 Total)
	Arad 3" Flow Sensor / Master Valve (4 Total)
	4" Brass Gate Valves (8 Total)



Controller "D"

Zone	Type
#1	Shrubs
#2	Shrubs
#3	Shrubs
#4	Shrubs
#5	Shrubs
#6	Shrubs
#7	Turf
#8	Turf
#9	Turf
#10	Turf
#11	Turf
#12	Master Valve

Note: All Turf Zone Labels Are Black, All Shrub Zone Labels Are Red



Controller "E"

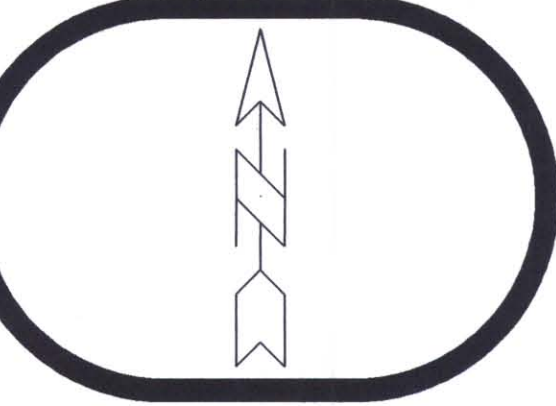
Zone	Type	Zone	Type
#1	Shrubs	#11	Turf
#2	Shrubs	#12	Master Valve
#3	Shrubs		
#4	Shrubs		
#5	Turf		
#6	Turf		
#7	Turf		
#8	Turf		
#9	Turf		
#10	Turf		

Controller "F"

Zone	Type	Zone	Type
#1	Shrubs	#11	Turf
#2	Shrubs	#12	Master Valve
#3	Shrubs		
#4	Turf		
#5	Turf		
#6	Turf		
#7	Turf		
#8	Turf		
#9	Turf		
#10	Turf		

NOTE: Irrigation Record Drawings, Sheet Numbers 871A to 871N, were prepared by Stan's Sprinkler Service, Inc. and later accepted by the City of Wichita Parks Department on August 30, 2005.

Irrigation As-Built



Project: West Kellogg Flyover: Maize To Tyler - Turf Areas

Sheet 3 of 13

Drawn By: P.P.

Checked By: D.D.

Scale: 1"=30'

Date: 8/29/05