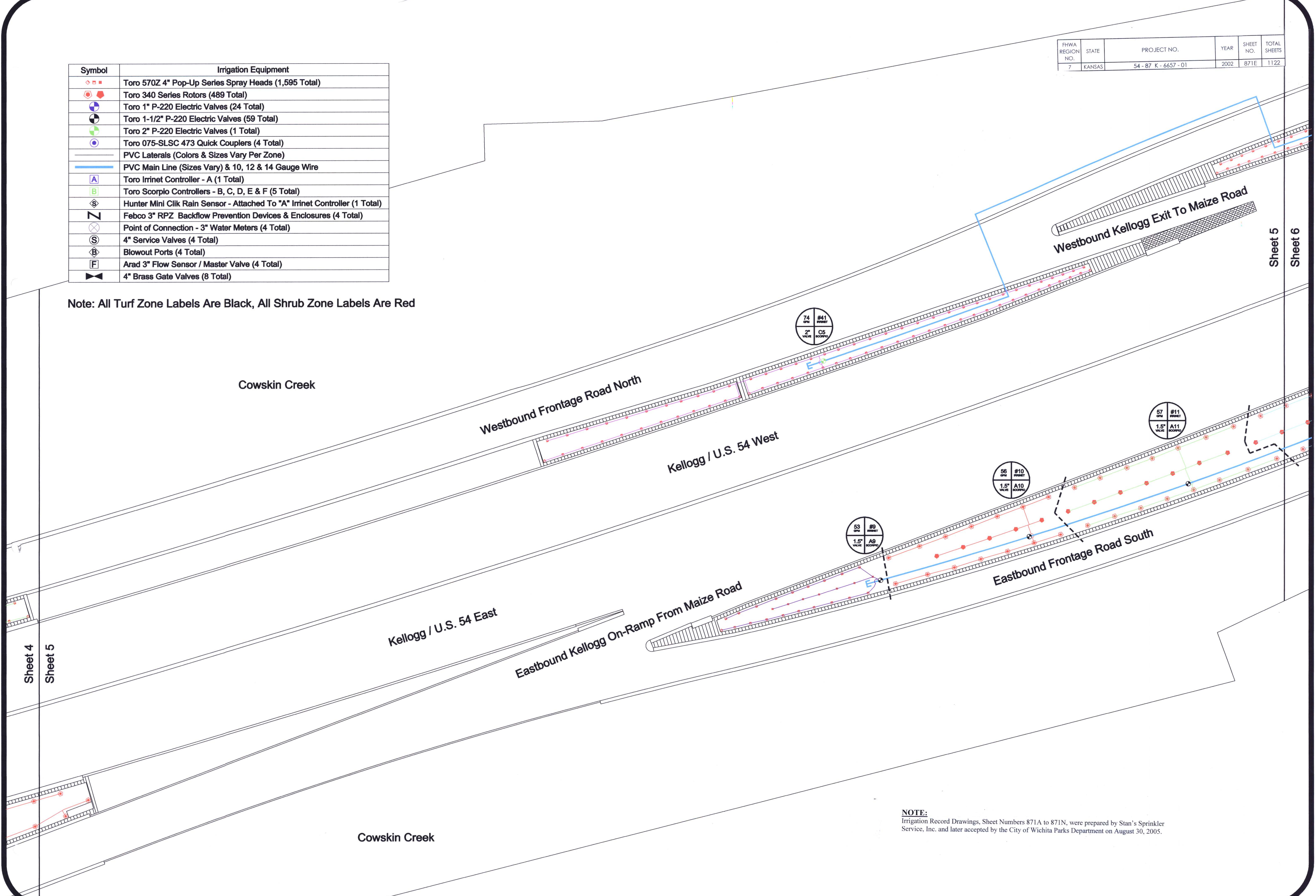


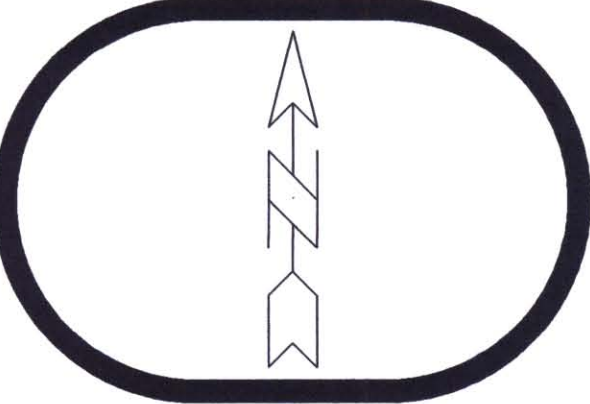
FHWA REGION NO.	STATE	PROJECT NO.	YEAR	SHEET NO.	TOTAL SHEETS
7	KANSAS	54-87 K-6657-01	2002	871E	1122

Symbol	Irrigation Equipment
	Toro 570Z 4" Pop-Up Series Spray Heads (1,595 Total)
	Toro 340 Series Rotors (489 Total)
	Toro 1" P-220 Electric Valves (24 Total)
	Toro 1-1/2" P-220 Electric Valves (59 Total)
	Toro 2" P-220 Electric Valves (1 Total)
	Toro 075-SLSC 473 Quick Couplers (4 Total)
	PVC Laterals (Colors & Sizes Vary Per Zone)
	PVC Main Line (Sizes Vary) & 10, 12 & 14 Gauge Wire
	Toro Irrinet Controller - A (1 Total)
	Toro Scorpio Controllers - B, C, D, E & F (5 Total)
	Hunter Mini Clik Rain Sensor - Attached To "A" Irrinet Controller (1 Total)
	Febco 3" RPZ Backflow Prevention Devices & Enclosures (4 Total)
	Point of Connection - 3" Water Meters (4 Total)
	4" Service Valves (4 Total)
	Blowout Ports (4 Total)
	Arad 3" Flow Sensor / Master Valve (4 Total)
	4" Brass Gate Valves (8 Total)

Note: All Turf Zone Labels Are Black, All Shrub Zone Labels Are Red



Irrigation As-Built



Project:
West Kellogg Flyover: Maize To Tyler - Turf Areas

Sheet 5 of 13

Drawn By:
P.P.

Checked By:
D.D.

Scale:
1"=30'

Date:
8/29/05

NOTE:
Irrigation Record Drawings, Sheet Numbers 871A to 871N, were prepared by Stan's Sprinkler Service, Inc. and later accepted by the City of Wichita Parks Department on August 30, 2005.