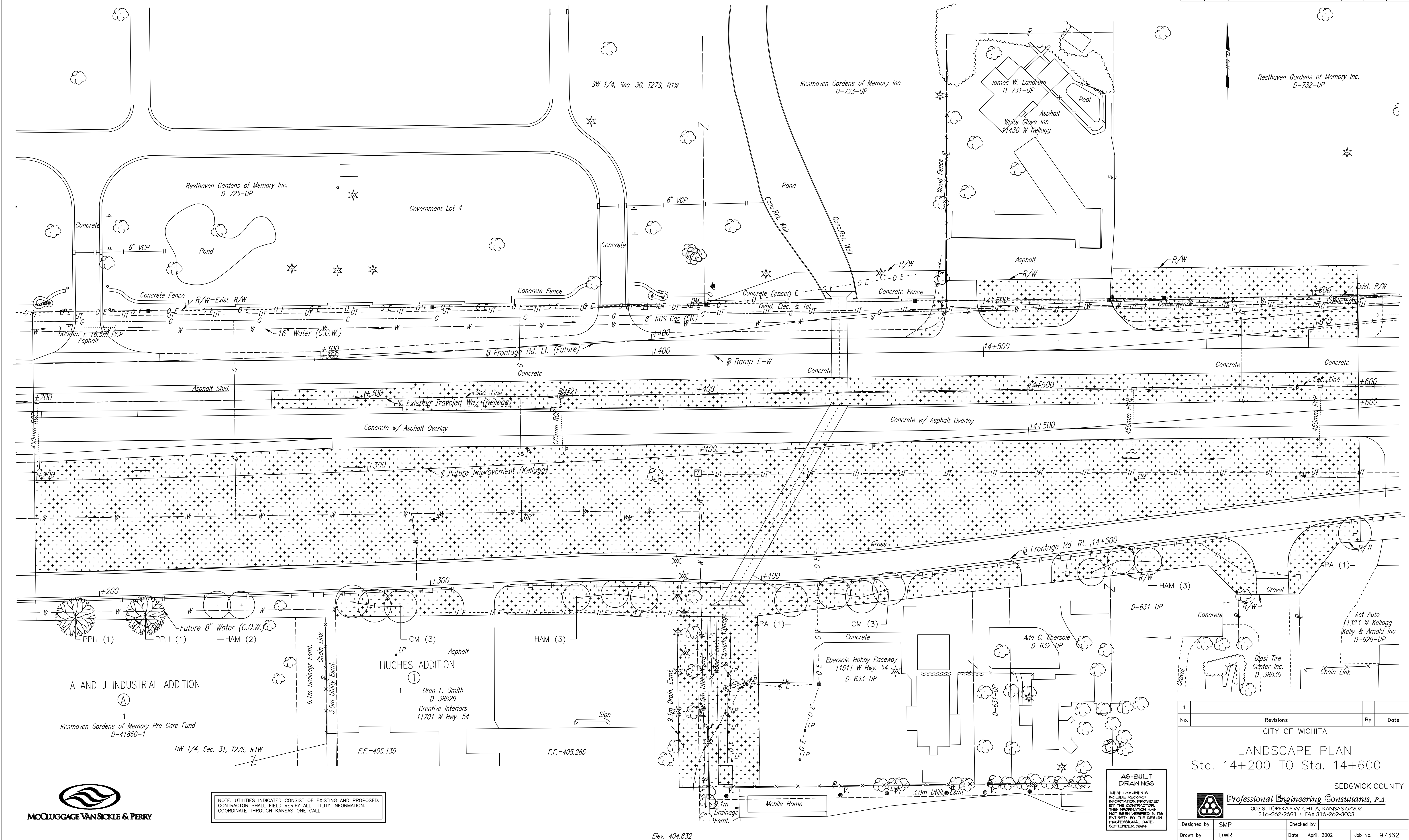


FHWA REGION NO.	STATE	PROJECT NO.	YEAR	SHEET NO.	TOTAL SHEETS
7	KANSAS	54-87 K-6657-01	2002	873	1122

DATE	
BY	
REFERENCES NOTED	
REFERENCES CHECKED	



DSNR: OPER: DWR SCALE: 1:500  
 F: 9934/15142 BY: DWR



NOTE: UTILITIES INDICATED CONSIST OF EXISTING AND PROPOSED. CONTRACTOR SHALL FIELD VERIFY ALL UTILITY INFORMATION. COORDINATE THROUGH KANSAS ONE CALL.

No.	Revisions	By	Date
1			

CITY OF WICHITA  
 LANDSCAPE PLAN  
 Sta. 14+200 TO Sta. 14+600  
 SEDGWICK COUNTY

Designed by	SMP	Checked by	
Drawn by	DWR	Date	April, 2002
		Job No.	97362

AS-BUILT DRAWINGS  
 THESE DOCUMENTS INCLUDE RECORD INFORMATION PROVIDED BY THE CONTRACTOR. THIS INFORMATION HAS NOT BEEN VERIFIED IN ITS ENTIRETY BY THE DESIGN PROFESSIONAL DATE: SEPTEMBER, 2006

Professional Engineering Consultants, P.A.  
 303 S. TOPEKA • WICHITA, KANSAS 67202  
 316-262-2691 • FAX 316-262-3003

Elev. 404.832