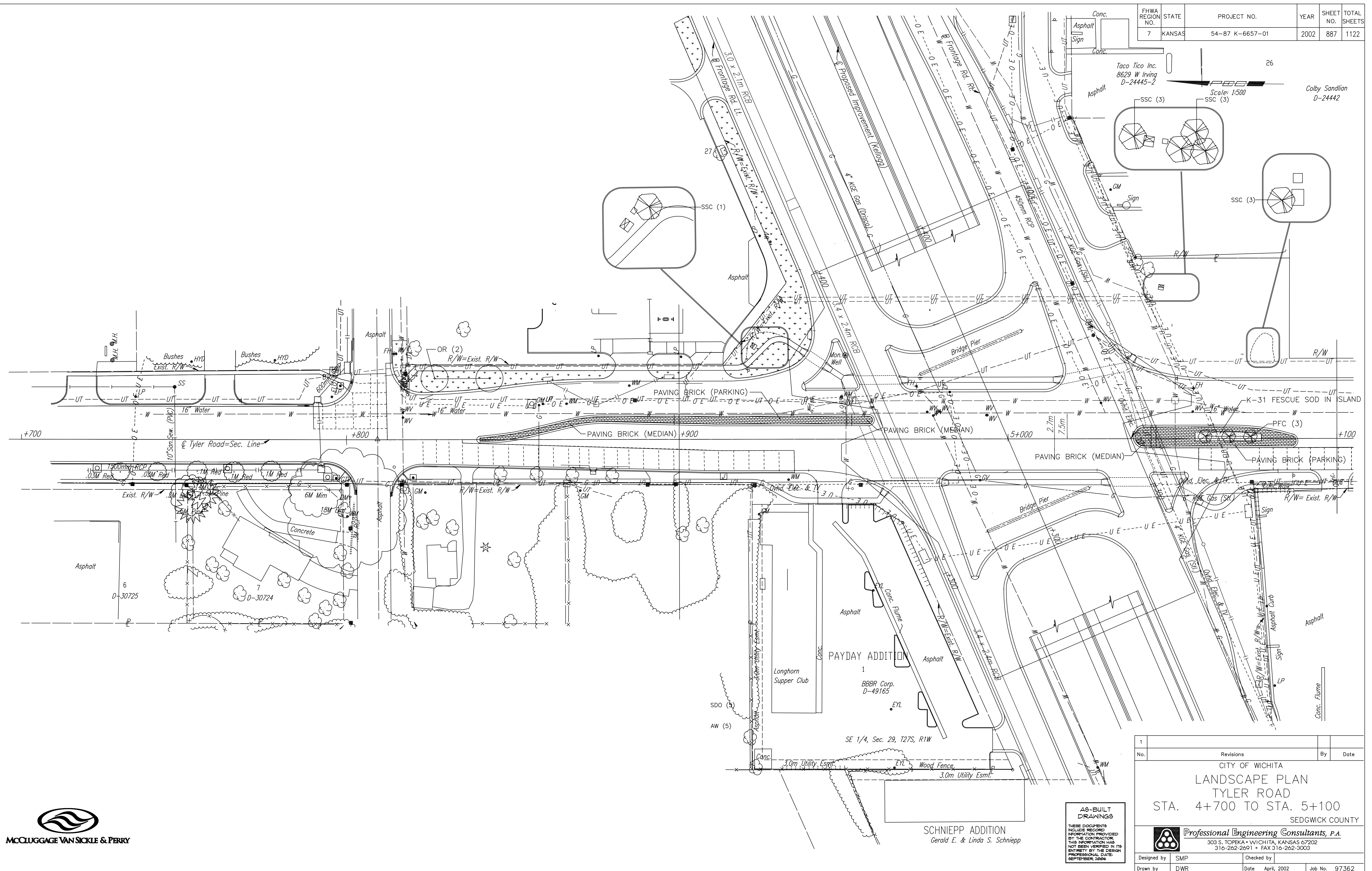


FHWA REGION NO.	STATE	PROJECT NO.	YEAR	SHEET NO.	TOTAL SHEETS
7	KANSAS	54-87 K-6657-01	2002	887	1122

Scale: 1:500
 Colby Sandlian
 D-24442

DATE	
BY	
REFERENCES NOTED	
REFERENCES CHECKED	



DSNR: WDH OPER: DWR SCALE: 1:500
 F:/9934/TYLS4700



AS-BUILT DRAWINGS
 THESE DOCUMENTS INCLUDE RECORD INFORMATION PROVIDED BY THE CONTRACTOR. THIS INFORMATION HAS NOT BEEN VERIFIED IN ITS ENTIRETY BY THE DESIGN PROFESSIONAL DATE: SEPTEMBER 2006

1			
No.	Revisions	By	Date
CITY OF WICHITA LANDSCAPE PLAN TYLER ROAD STA. 4+700 TO STA. 5+100 SEDGWICK COUNTY			
Professional Engineering Consultants, P.A. 303 S. TOPEKA • WICHITA, KANSAS 67202 316-262-2691 • FAX 316-262-3003			
Designed by	SMP	Checked by	
Drawn by	DWR	Date	April, 2002
		Job No.	97362