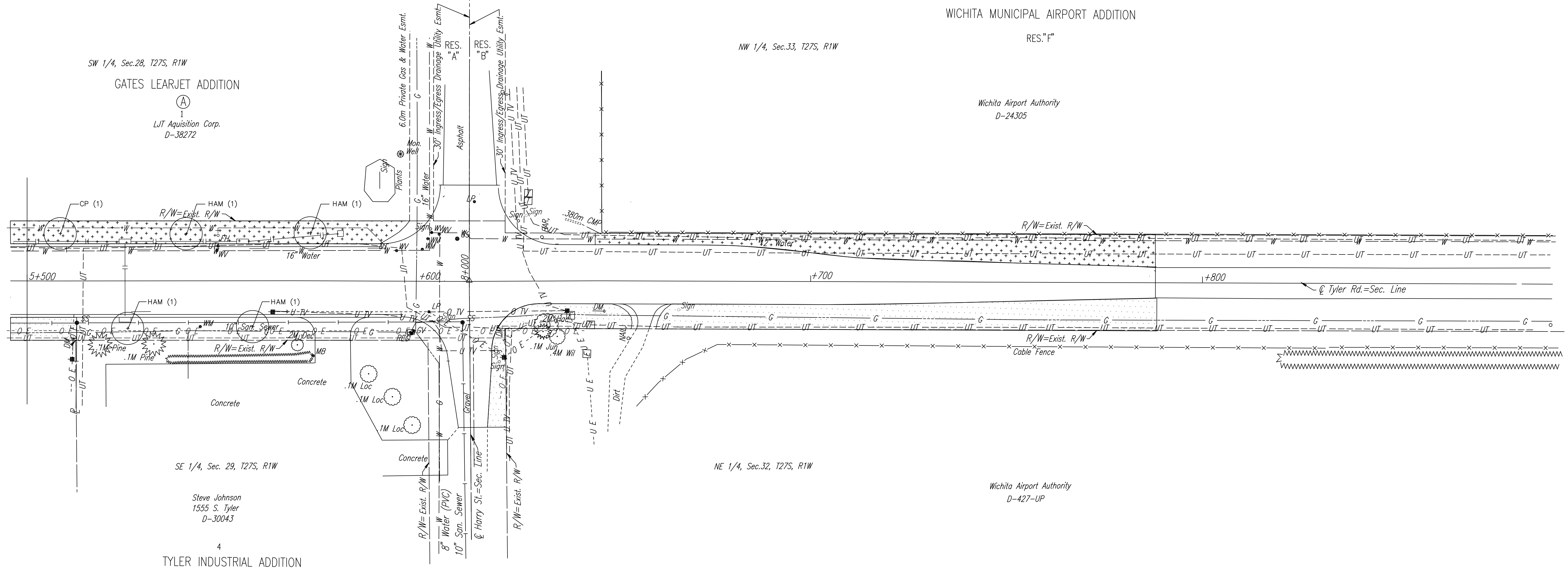


FHWA REGION NO.	STATE	PROJECT NO.	YEAR	SHEET NO.	TOTAL SHEETS
7	KANSAS	54-87 K-6657-01	2002	889	1122



DATE	
BY	
REFERENCES NOTED	
REFERENCES CHECKED	



DSNR: WDH OPER: DWR SCALE: 1:500  
 F: 9934/TYLS500



**UTILITIES**  
 Power - K G & E  
 Telephone - Southwestern Bell  
 Gas - K G & E Gas  
 Cable TV - Cox Communications  
 Water - City of Wichita Water Dept.  
 San. Sewer - City of Wichita Sewer Dept.

**AS-BUILT DRAWINGS**  
 THESE DOCUMENTS INCLUDE RECORD INFORMATION PROVIDED BY THE CONTRACTOR. THIS INFORMATION HAS NOT BEEN VERIFIED IN ITS ENTIRETY BY THE DESIGN PROFESSIONAL DATE: SEPTEMBER, 2006.

1			
No.	Revisions	By	Date
CITY OF WICHITA <b>LANDSCAPE PLAN</b> <b>TYLER ROAD</b> <b>STA. 5+500 TO STA. 5+800</b> SEDGWICK COUNTY			
<b>Professional Engineering Consultants, P.A.</b> 303 S. TOPEKA • WICHITA, KANSAS 67202 316-262-2691 • FAX 316-262-3003			
Designed by	SMP	Checked by	
Drawn by	DWR	Date	April, 2002
		Job No.	97362