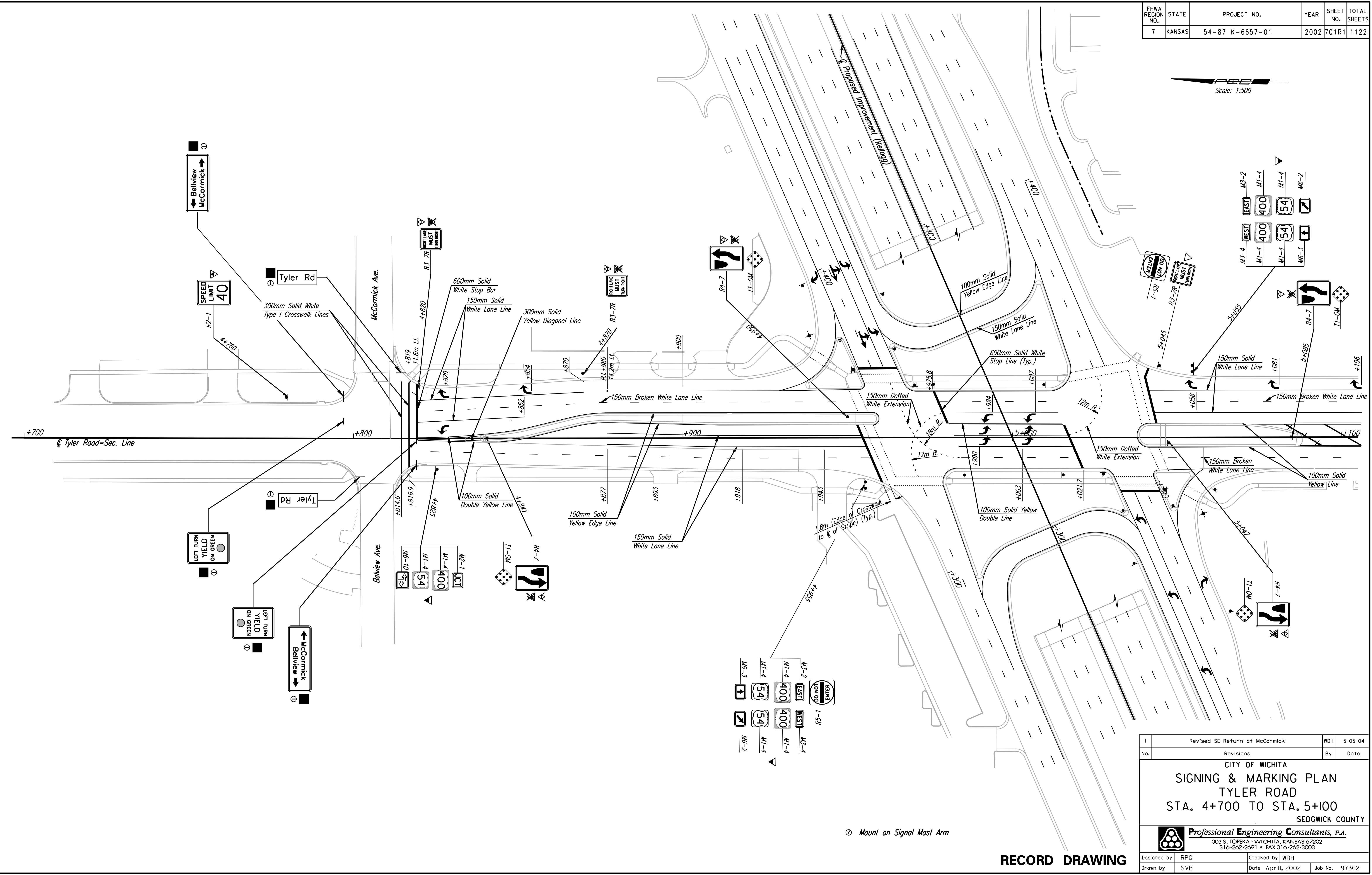


FHWA REGION NO.	STATE	PROJECT NO.	YEAR	SHEET NO.	TOTAL SHEETS
7	KANSAS	54-87 K-6657-01	2002	701R1	1122



DATE	
BY	
REFERENCES NOTED	
REFERENCES CHECKED	

DSMR: RCH OPER: JGP SCALE: 1:500  
 I:\1997\97362\As-Builts\dgn\Vol\_4\Sh 701-Tyler-p4700\_Revise.dgn Last Rev: 10-2-07 By: gdr



① Mount on Signal Mast Arm

**RECORD DRAWING**

Revised SE Return at McCormick		WDH	5-05-04
No.	Revisions	By	Date
<b>CITY OF WICHITA</b> <b>SIGNING &amp; MARKING PLAN</b> <b>TYLER ROAD</b> <b>STA. 4+700 TO STA. 5+100</b> SEDGWICK COUNTY			
<b>Professional Engineering Consultants, P.A.</b> 303 S. TOPEKA • WICHITA, KANSAS 67202 316-262-2691 • FAX 316-262-3003			
Designed by	RPG	Checked by	WDH
Drawn by	SVB	Date	Apr 11, 2002
		Job No.	97362