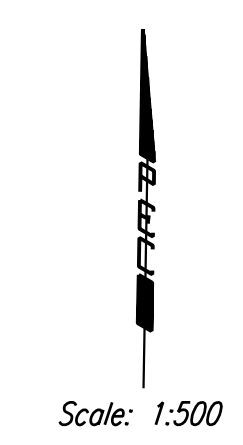
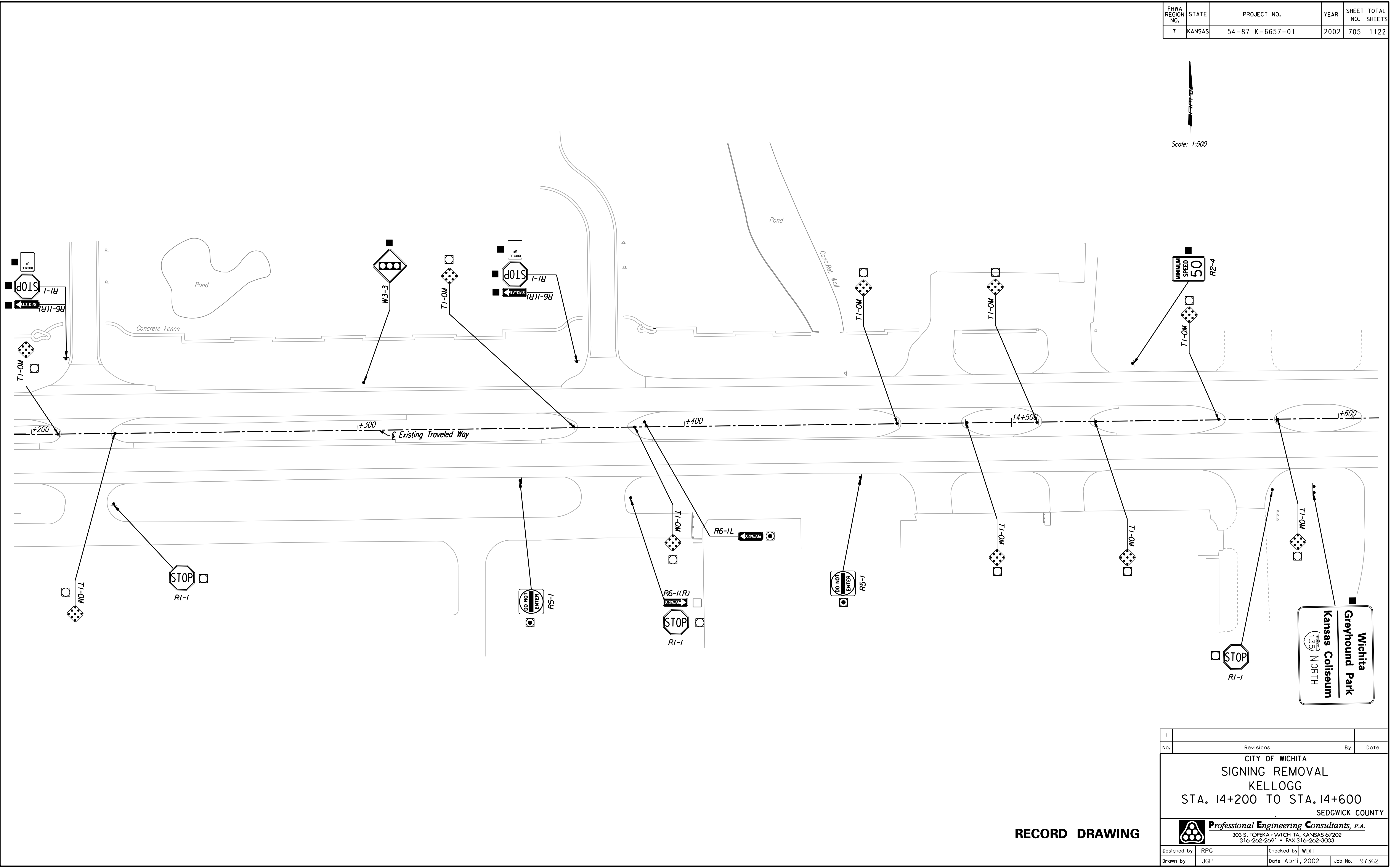


FHWA REGION NO.	STATE	PROJECT NO.	YEAR	SHEET NO.	TOTAL SHEETS
7	KANSAS	54-87 K-6657-01	2002	705	1122



DATE	BY
REFERENCES NOTED	REFERENCES CHECKED



DSNR: WDH OPER: JGP SCALE: 1:500
 1/1997/97362/As-Builts/dgn's/Vol_4/Sh 705-Sign-Removal.plt42.dgn Last Rev: 10-2-07 By: gdr

RECORD DRAWING

1			
No.	Revisions	By	Date
CITY OF WICHITA SIGNING REMOVAL KELLOGG STA. 14+200 TO STA. 14+600 SEDGWICK COUNTY			
Professional Engineering Consultants, P.A. <small>303 S. TOPEKA • WICHITA, KANSAS 67202 316-262-2691 • FAX 316-262-3003</small>			
Designed by	RPG	Checked by	WDH
Drawn by	JGP	Date	April, 2002
		Job No.	97362