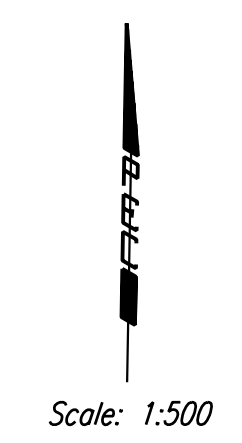
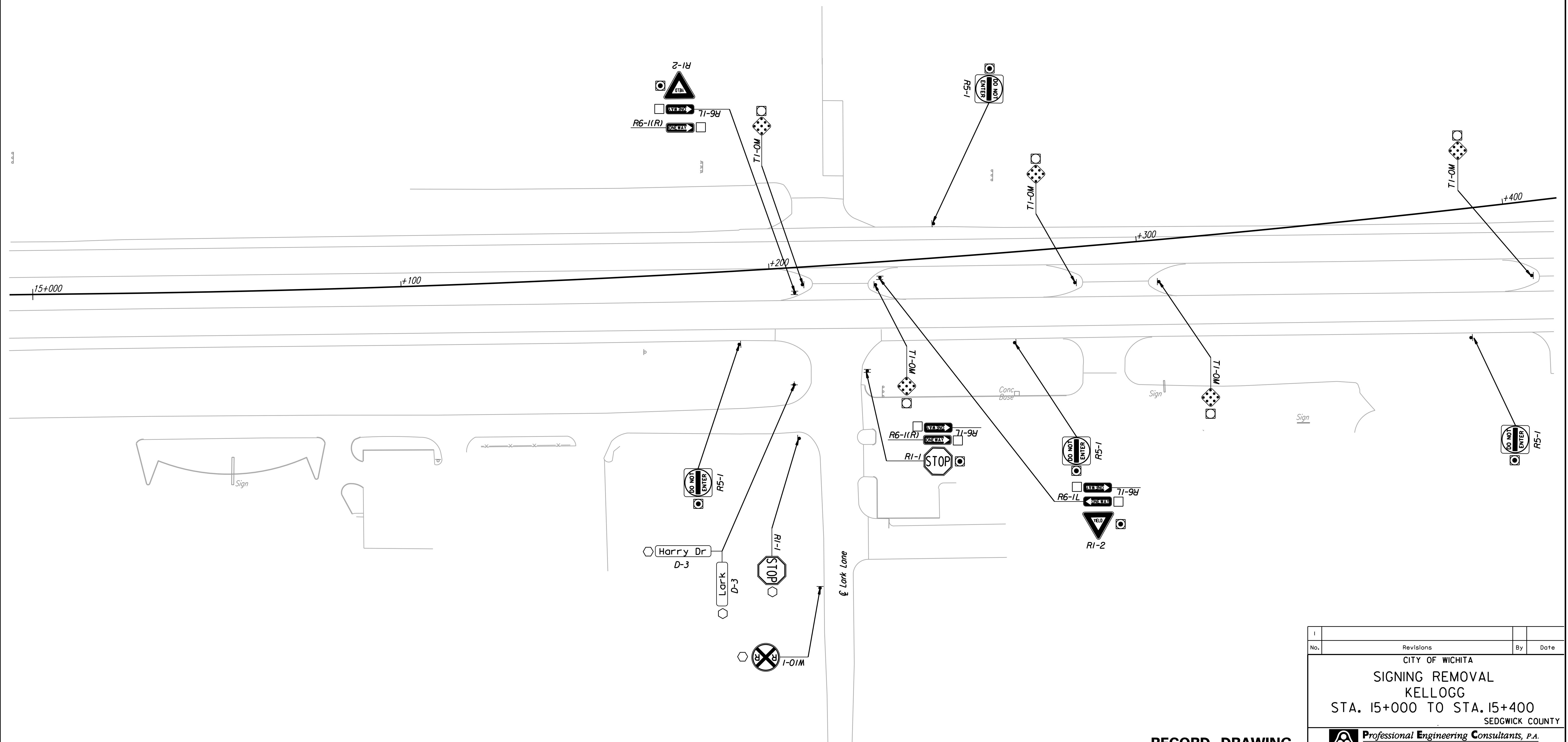


FHWA REGION NO.	STATE	PROJECT NO.	YEAR	SHEET NO.	TOTAL SHEETS
7	KANSAS	54-87 K-6657-01	2002	707	1122



DATE	BY
REFERENCES NOTED	REFERENCES CHECKED



DSNR: WDH OPER: JGP SCALE: 1:500  
 I:/1997/97362/As-Builts/dgn's/Vol\_4/Sh 707-Sign-Removal.plt/50.dgn Last Rev: 10-2-07 By: gdr

**RECORD DRAWING**

1			
No.	Revisions	By	Date
CITY OF WICHITA <b>SIGNING REMOVAL</b> <b>KELLOGG</b> <b>STA. 15+000 TO STA. 15+400</b> SEDGWICK COUNTY			
<b>Professional Engineering Consultants, P.A.</b> <small>303 S. TOPEKA • WICHITA, KANSAS 67202          316-262-2691 • FAX 316-262-3003</small>			
Designed by	RPG	Checked by	WDH
Drawn by	JGP	Date	April, 2002 Job No. 97362