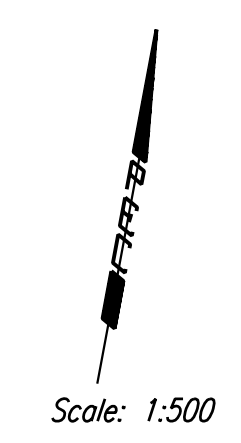
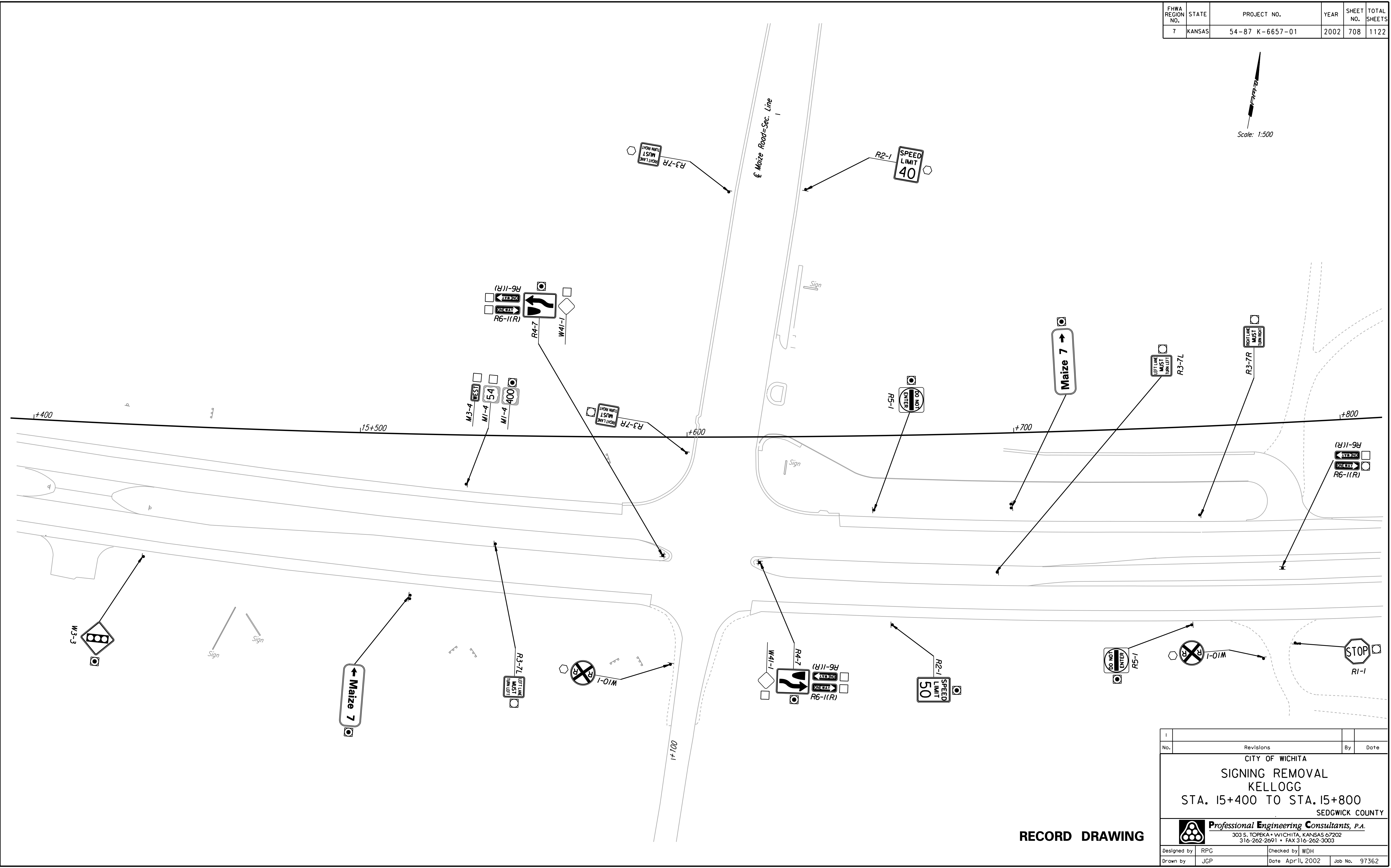


FHWA REGION NO.	STATE	PROJECT NO.	YEAR	SHEET NO.	TOTAL SHEETS
7	KANSAS	54-87 K-6657-01	2002	708	1122



DATE	BY
REFERENCES NOTED	REFERENCES CHECKED



DSNR: WDH OPER: JGP SCALE: 1:500
 11/1997/97362/As-Builts/dgn/s/Vol_4/Sh 708-Sign-Removal.plt154.dgn Last Rev: 10-2-07 By: gdr

RECORD DRAWING

No.	Revisions	By	Date

CITY OF WICHITA
SIGNING REMOVAL
KELLOGG
STA. 15+400 TO STA. 15+800
 SEDGWICK COUNTY

Professional Engineering Consultants, P.A.
 303 S. TOPEKA • WICHITA, KANSAS 67202
 316-262-2691 • FAX 316-262-3003

Designed by	RPG	Checked by	WDH
Drawn by	JGP	Date	April, 2002
		Job No.	97362