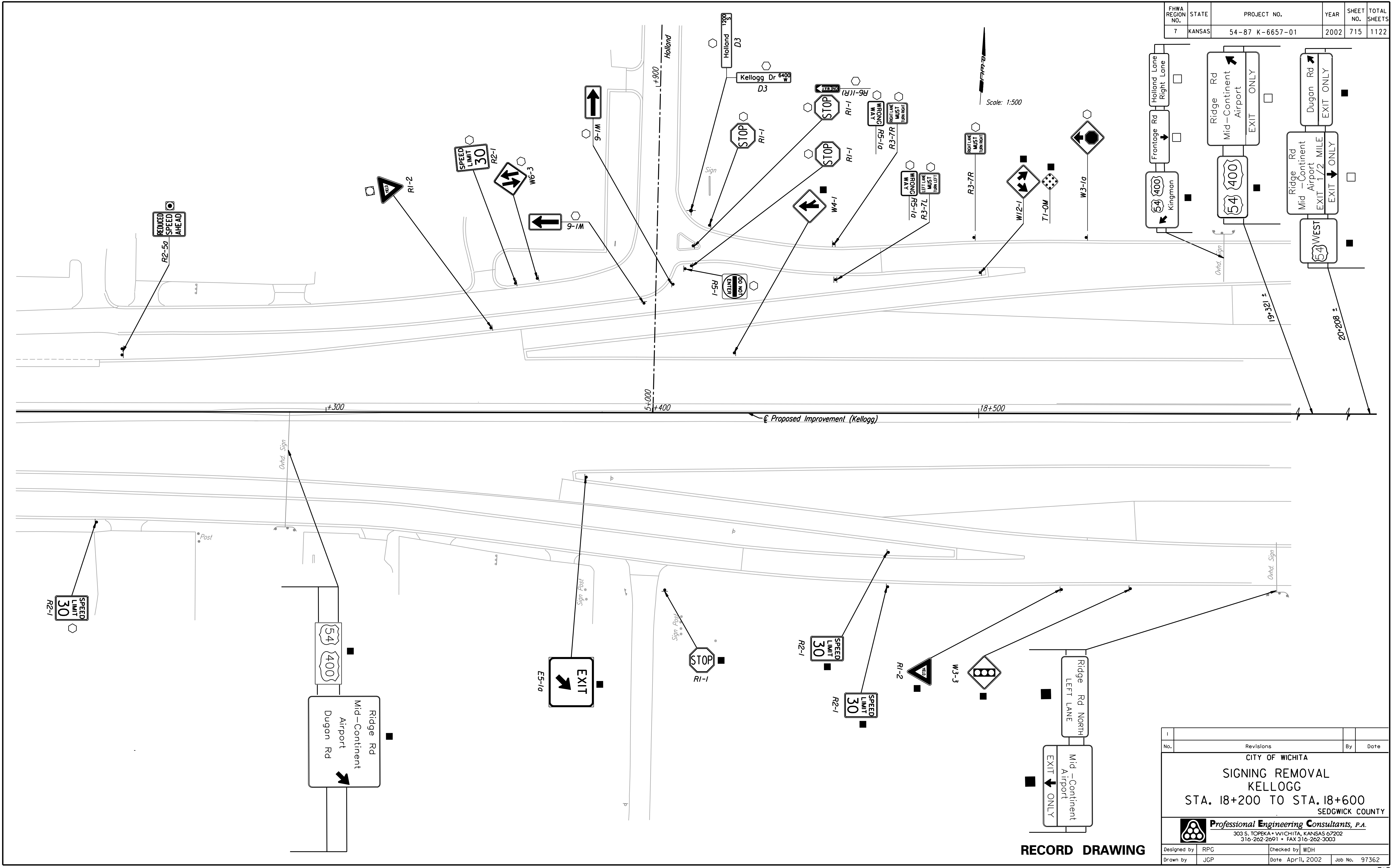


| | | | | | |
|-----------------|--------|-----------------|------|-----------|--------------|
| FHWA REGION NO. | STATE | PROJECT NO. | YEAR | SHEET NO. | TOTAL SHEETS |
| 7 | KANSAS | 54-87 K-6657-01 | 2002 | 715 | 1122 |

| | |
|--------------------|------|
| BY | DATE |
| | |
| REFERENCES NOTED | |
| REFERENCES CHECKED | |

DSMR: WDH OPER: JGP SCALE: 1:500
 1/1997/97.362/As-Builts/dgn/s/Vol_4/Sh 715-Sign-Removal_pl182.dgn Last Rev: 10-2-07 By: gdr



RECORD DRAWING

| No. | Revisions | By | Date |
|-----|-----------|----|------|
| | | | |

CITY OF WICHITA
SIGNING REMOVAL
KELLOGG
STA. 18+200 TO STA. 18+600
 SEDGWICK COUNTY

Professional Engineering Consultants, P.A.
 303 S. TOPEKA • WICHITA, KANSAS 67202
 316-262-2691 • FAX 316-262-3003

| | | | |
|-------------|-----|------------|-------------|
| Designed by | RPG | Checked by | WDH |
| Drawn by | JGP | Date | April, 2002 |
| | | Job No. | 97362 |