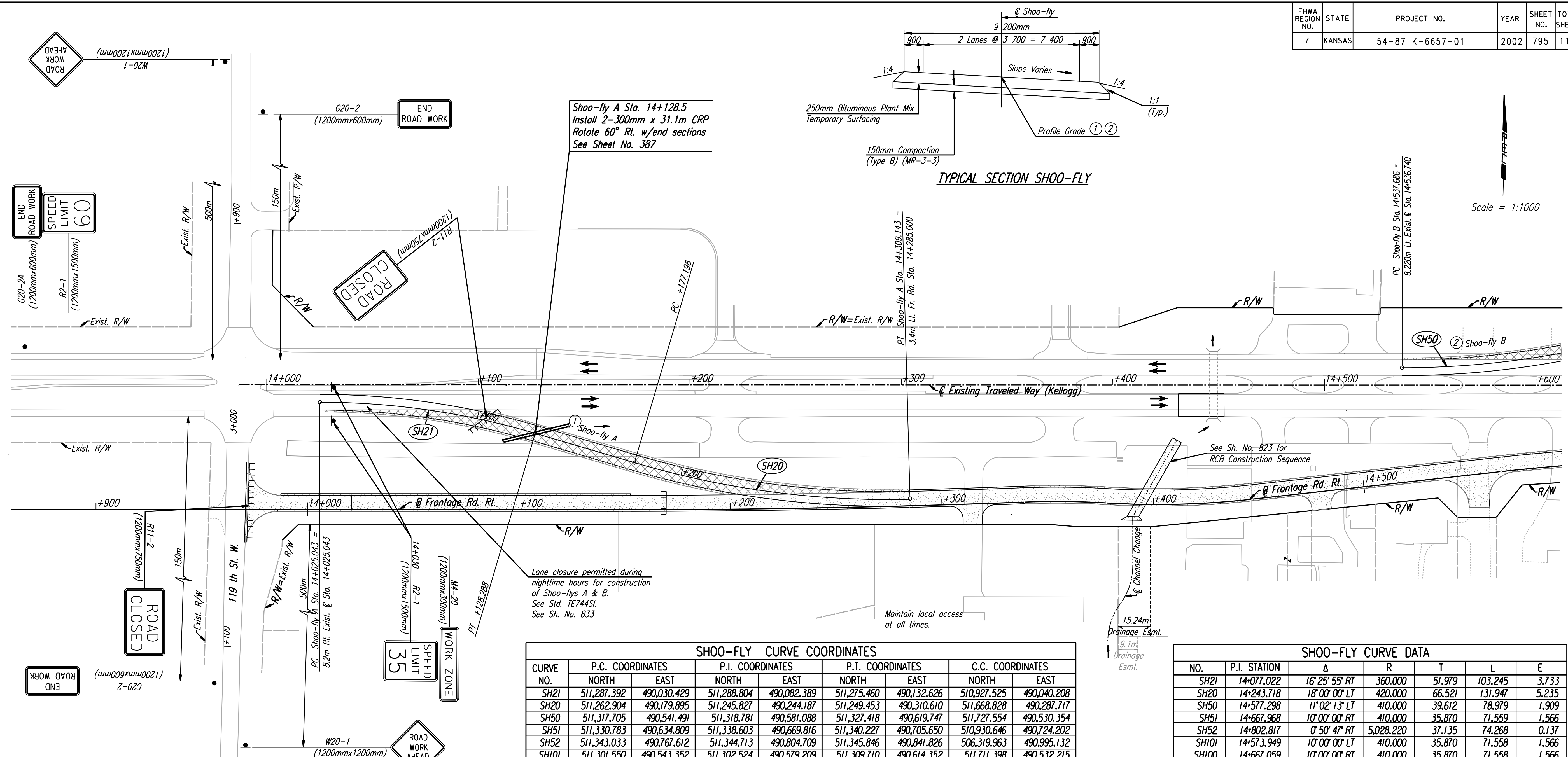


DATE	
BY	
REFERENCES NOTED	
REFERENCES CHECKED	



Scale = 1:1000

CURVE NO.	P.C. COORDINATES		P.I. COORDINATES		P.T. COORDINATES		C.C. COORDINATES	
	NORTH	EAST	NORTH	EAST	NORTH	EAST	NORTH	EAST
SH21	511,287.392	490,030.429	511,288.804	490,082.389	511,275.460	490,132.626	510,927.525	490,040.208
SH20	511,262.904	490,179.895	511,245.827	490,244.187	511,249.453	490,310.610	511,668.828	490,287.717
SH50	511,317.705	490,541.491	511,318.781	490,581.088	511,327.418	490,619.747	511,727.554	490,530.354
SH51	511,330.783	490,634.809	511,338.603	490,669.816	511,340.227	490,705.650	510,930.646	490,724.202
SH52	511,343.033	490,767.612	511,344.713	490,804.709	511,345.846	490,841.826	506,319.963	490,995.132
SH101	511,301.550	490,543.352	511,302.524	490,579.209	511,309.710	490,614.352	511,711.398	490,532.215
SH100	511,314.027	490,635.467	511,321.214	490,670.610	511,322.188	490,706.467	510,912.339	490,717.604
SH31	511,342.396	491,439.675	511,343.850	491,476.664	511,348.713	491,513.361	512,141.780	491,408.267
SH40	511,364.338	491,631.274	511,369.317	491,668.849	511,366.362	491,706.637	511,007.458	491,678.567
SH41	511,366.003	491,711.226	511,362.064	491,761.587	511,373.830	491,810.713	511,685.029	491,736.177
SH7	511,460.205	492,101.100	511,472.354	492,133.261	511,491.922	492,161.528	511,722.139	492,002.154
SH8	511,503.007	492,177.540	511,517.317	492,198.210	511,527.715	492,221.099	511,272.790	492,336.915
SH32	511,380.753	491,755.143	511,391.351	491,835.124	511,419.868	491,910.597	512,074.686	491,663.186
SH33	511,494.038	492,106.903	511,501.180	492,125.805	511,505.534	492,145.536	511,232.111	492,205.867
SH34	511,510.665	492,168.794	511,517.060	492,197.775	511,529.388	492,224.772	511,784.089	492,108.463
SH9	512,206.303	493,982.654	512,207.755	494,013.023	512,202.538	494,042.977	511,931.617	493,995.786
SH10	512,201.086	494,051.309	512,195.873	494,081.236	512,197.318	494,111.579	512,472.007	494,098.500
SH61	511,299.425	490,470.696	511,300.160	490,497.738	511,306.058	490,524.139	511,579.322	490,463.090
SH62	511,305.421	490,390.390	511,298.148	490,423.685	511,299.074	490,457.753	511,578.970	490,450.147
SH63	511,311.769	490,323.028	511,312.694	490,357.095	511,305.421	490,390.390	511,031.872	490,330.633

NO.	P.I. STATION	Δ	R	T	L	E
SH21	14+077.022	16° 25' 55" RT	360.000	51.979	103.245	3.733
SH20	14+243.718	18° 00' 00" LT	420.000	66.521	131.947	5.235
SH50	14+577.298	11° 02' 13" LT	410.000	39.612	78.979	1.909
SH51	14+667.968	10° 00' 00" RT	410.000	35.870	71.559	1.566
SH52	14+802.817	0° 50' 47" RT	5,028.220	37.135	74.268	0.137
SH101	14+573.949	10° 00' 00" LT	410.000	35.870	71.558	1.566
SH100	14+667.059	10° 00' 00" RT	410.000	35.870	71.558	1.566
SH31	15+471.484	5° 17' 55" LT	800.000	37.018	73.983	0.856
SH40	15+665.296	12° 01' 15" RT	360.000	37.903	75.528	1.990
SH41	15+758.039	17° 56' 29" LT	320.000	50.515	100.203	3.963
SH7	16+134.723	14° 00' 00" LT	280.000	34.380	68.417	2.103
SH8	16+213.374	10° 15' 40" RT	280.000	25.140	50.145	1.126
SH32	15+833.024	13° 08' 58" LT	700.000	80.680	160.652	4.634
SH33	16+143.052	8° 15' 19" RT	280.000	20.206	40.342	0.728
SH34	16+216.684	12° 06' 03" LT	280.000	29.678	59.136	1.568
SH9	18+165.998	12° 37' 05" RT	275.000	30.404	60.563	1.676
SH10	18+234.992	12° 36' 25" LT	275.000	30.377	60.509	1.673
SH61	14+493.849	11° 02' 12" LT	280.000	27.052	53.937	1.304
SH62	14+420.103	13° 52' 45" LT	280.000	34.080	67.827	2.066
SH63	14+352.276	13° 52' 45" RT	280.000	34.080	67.827	2.066

**LEGEND**

- New Construction (Work Area)
- Temporary Pavement (Detour Construction)
- Inertial Barrier System
- Type III Barricade
- \* Sign to be mounted on Type III Barricade.
- Reflectorized Drums spaced @ 15 m
- R6-1R ONE-WAY
- SH21 Curve Number for Shoo-fly
- Traffic Lane

- ① See Sheet No. 844 For Shoo-fly A Profile
- ② See Sheet No. 844 For Shoo-fly B Profile

DSNR: OPER: JGP Scale: 1:1000  
12/1997/97-362-As-Builts/dgn/s/Vol 4/Sh 794-TC Stage 1a-pl138.dgn Last Rev: 10-4-07 By: gdr

Revisions		By	Date
CITY OF WICHITA <b>TRAFFIC CONTROL</b> <b>STAGES IA, IB &amp; IC</b> <b>STA. 13+800 TO STA. 14+600</b> SEDGWICK COUNTY			
 <b>Professional Engineering Consultants, P.A.</b> 303 S. TOPEKA • WICHITA, KANSAS 67202 316-262-2691 • FAX 316-262-3003			
Designed by	RPG, RWM	Checked by	WDH
Drawn by	JGP	Date	April, 2002
		Job No.	97362