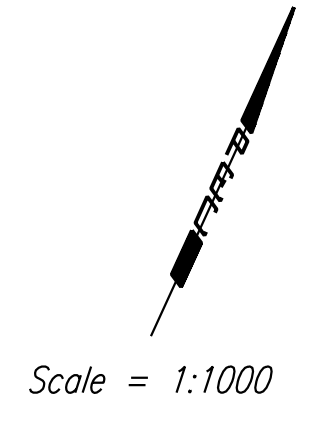
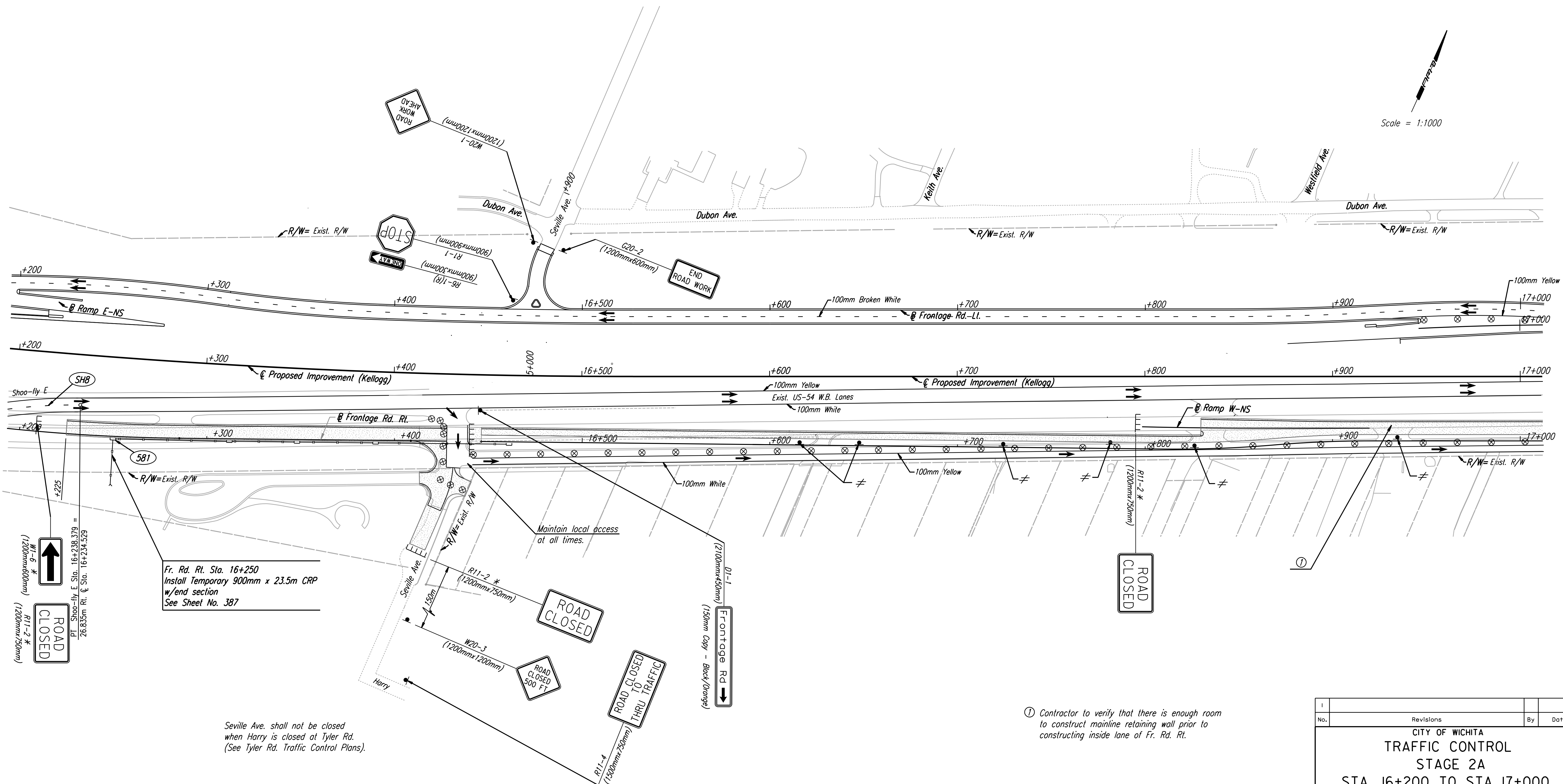


FHWA REGION NO.	STATE	PROJECT NO.	YEAR	SHEET NO.	TOTAL SHEETS
7	KANSAS	54-87 K-6657-01	2002	808	1122

DATE	
BY	
REFERENCES NOTED	
REFERENCES CHECKED	



Fr. Rd. Rt. Sta. 16+250
Install Temporary 900mm x 23.5m CRP
w/end section
See Sheet No. 387

Seville Ave. shall not be closed
when Harry is closed at Tyler Rd.
(See Tyler Rd. Traffic Control Plans.)

Maintain local access
at all times.

① Contractor to verify that there is enough room
to construct mainline retaining wall prior to
constructing inside lane of Fr. Rd. Rt.

DSMR: RCH OPER: JGP Scale: 1:1000
1:1997/97.362/As-Built.dgn/4/4/808-TC Stage 2a-pl162.dgn Last Rev: 10-4-07 By: gdr

No.	Revisions	By	Date
CITY OF WICHITA TRAFFIC CONTROL STAGE 2A STA. 16+200 TO STA. 17+000 SEDGWICK COUNTY			
Professional Engineering Consultants, P.A. <small>303 S. TOPEKA • WICHITA, KANSAS 67202 316-262-2691 • FAX 316-262-3003</small>			
Designed by	RPC, RWM	Checked by	WDH
Drawn by	JGP	Date	April, 2002 Job No. 97362