

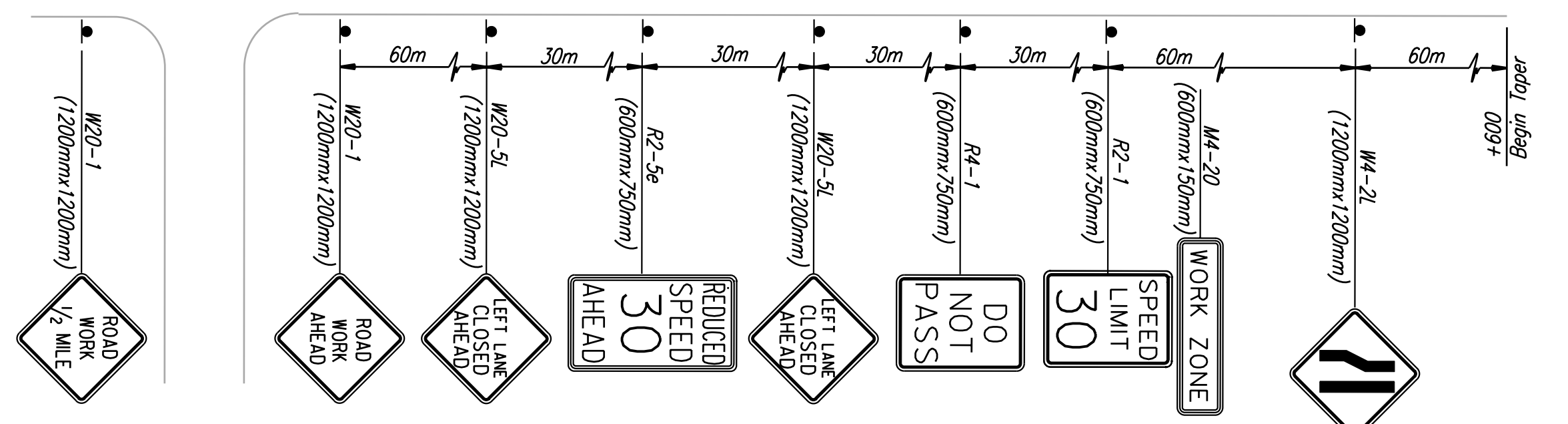
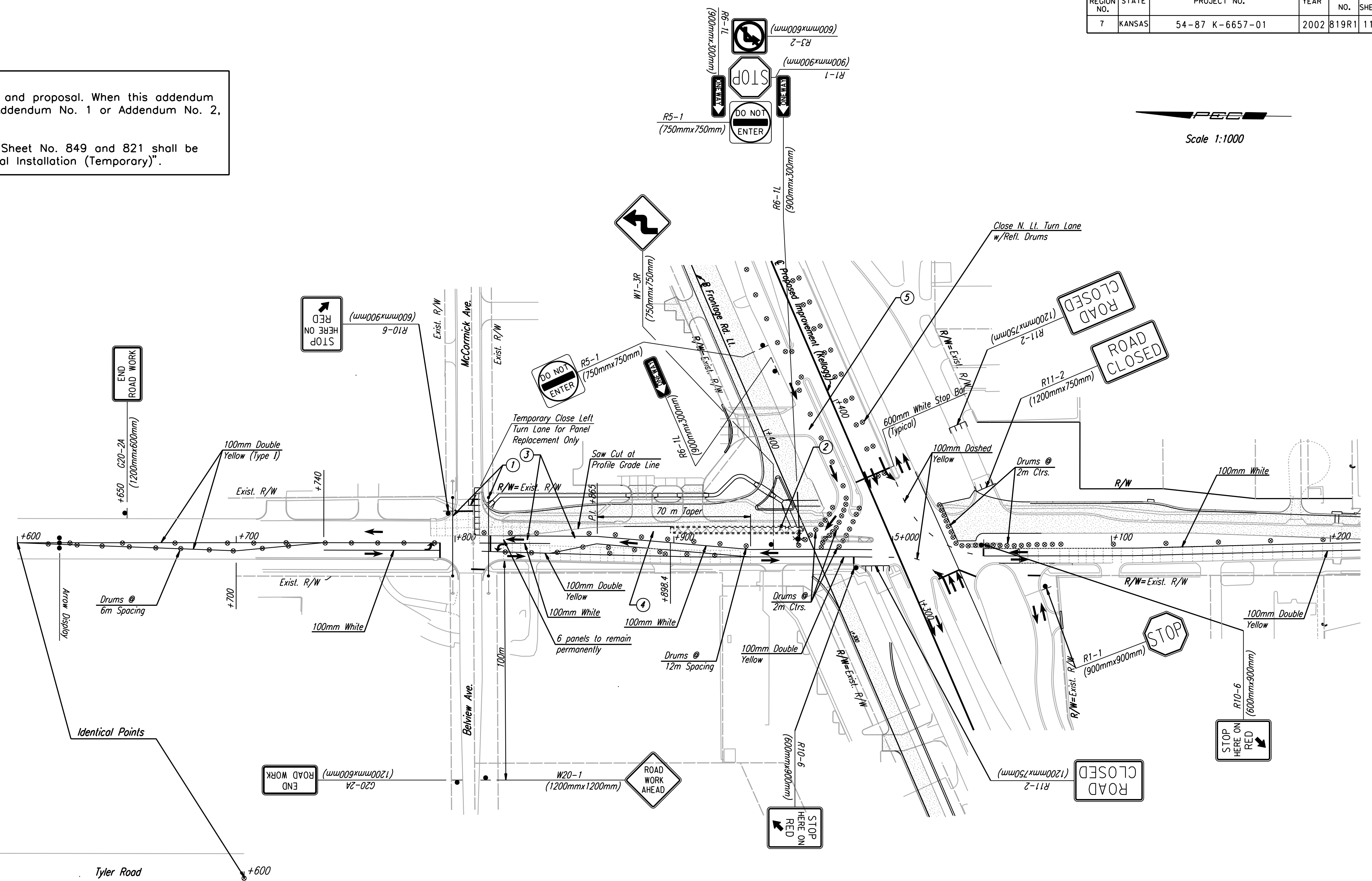
FHWA REGION NO.	STATE	PROJECT NO.	YEAR	SHEET NO.	TOTAL SHEETS
7	KANSAS	54-87 K-6657-01	2002	819R1	1122



**ADDENDUM NO. 3:**  
 The following changes and additions shall be made to the plans and proposal. When this addendum conflicts with the specifications, plans, or special provisions or Addendum No. 1 or Addendum No. 2, **THIS ADDENDUM SHALL GOVERN.**

7. The Temporary signal work at McCormick and Tyler noted on Sheet No. 849 and 821 shall be included in the Lump Sum contract price bid for "Traffic Signal Installation (Temporary)".

DATE	
BY	
REFERENCES NOTED	
REFERENCES CHECKED	



- ① The Signal Heads facing Tyler Road at McCormick shall be placed on span wires for each stage of traffic handling such that the appropriate Signal Head shall be in line with the appropriate lane. The Contractor shall provide the Control Wire as required for each adjustment and shall return the Signal Heads to their Permanent position after completion of the Final Stage. The Control Wires shall be left non-spliced.
- The Controller shall operate in a Semi-Actuated mode during construction. In addition, an interconnect cable shall be extended to the temporary Signal Controller at Tyler and Kellogg. The Timing shall be set so that the Northbound Tyler has a Green Indication at McCormick while Westbound Kellogg has a Green Indication at Tyler.
- The Signal Timing must be approved by the Engineer.

- ② Do not construct median curb this stage. Place Temporary Pavement in Median for traffic handling during Stage IB.
- ③ Exist. Pavement to remain this Stage.
- ④ Place Temporary Bit. Pavement Overlay as required for Stage IB traffic handling.
- ⑤ Contractor to Temporarily Close Frontage Road for RCB Construction.

**RECORD DRAWING**

1	Added S.B. Lt. Turn at McCormick	DH	9-24-02
No.	Revisions	By	Date
CITY OF WICHITA <b>TYLER ROAD</b> <b>TRAFFIC CONTROL - STAGE IA</b> <b>STA. 4+600 TO STA. 5+200</b> SEDGWICK COUNTY			
<b>Professional Engineering Consultants, P.A.</b> 303 S. TOPEKA • WICHITA, KANSAS 67202 316-262-2691 • FAX 316-262-3003			
Designed by	WDH	Checked by	WDH
Drawn by	SVB	Date	Sept., 2002 Job No. 97362

DSNR:WDH OPER:SVB Scale: 1:1000  
 L:\1997\97362\As-Builts\dgr's\Vol 4\Sh 819R1-TC Stage 1a-rcb\tyler\pl4700.dgn Last Rev: 10-5-07 By: gdr