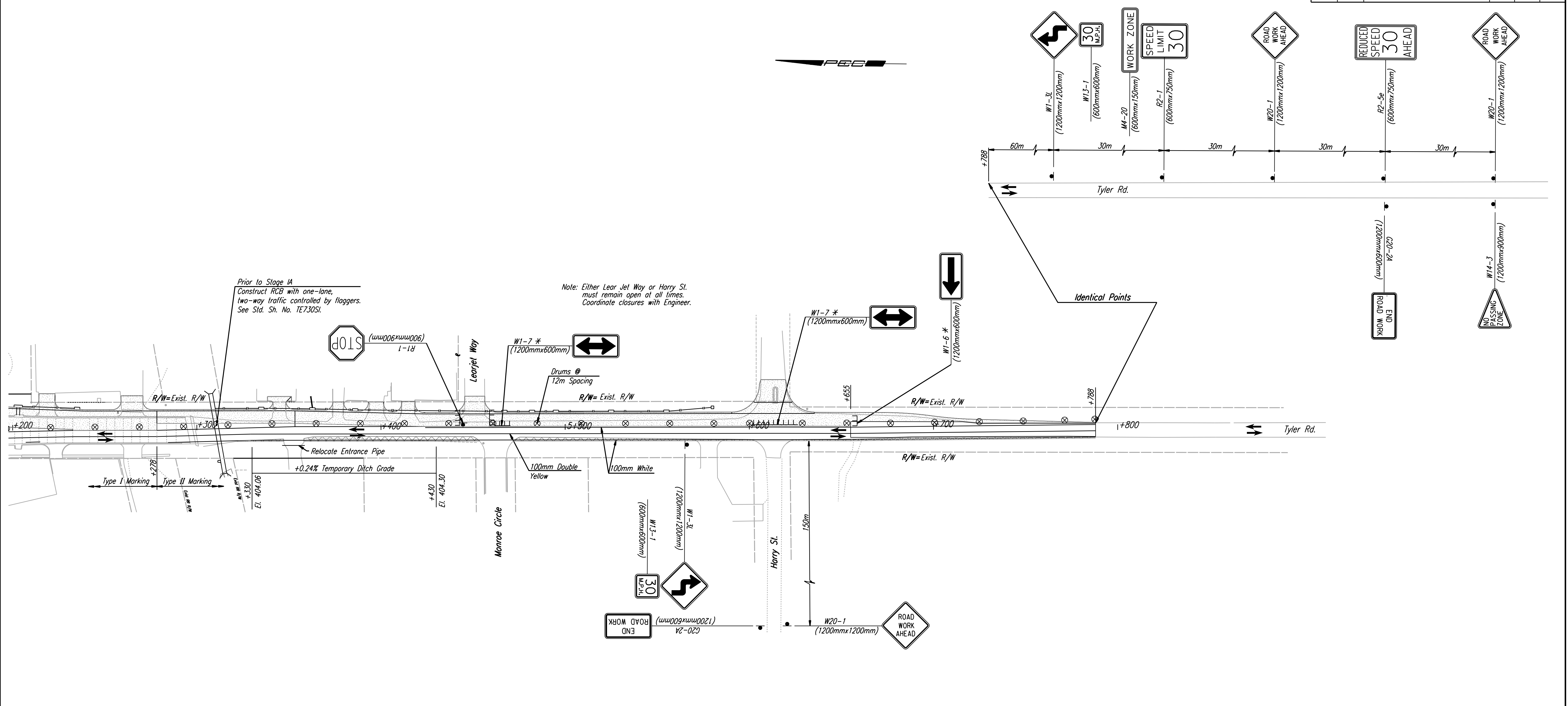
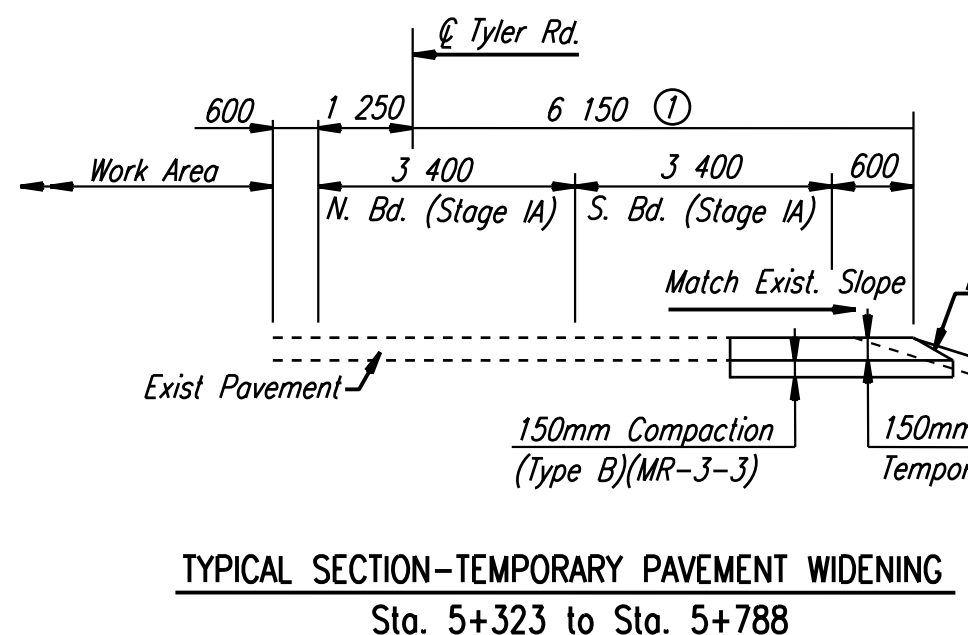


DATE	
BY	
REFERENCES NOTED	
REFERENCES CHECKED	



Prior to Stage IA
Construct RCB with one-lane,
two-way traffic controlled by flaggers.
See Std. Sh. No. 1E730SL.

Note: Either Lear Jet Way or Harry St.
must remain open at all times.
Coordinate closures with Engineer.



- ① Varies from 6 150 @ Sta. 5+655 to 4 500 @ Sta. 5+788.
- ② 1:4 Sta. 5+640 to Sta. 5+788

Note: All work & materials associated with
relocating entrance pipes to the temporary
ditch shall be subsidiary.

DSNR: OPER: JGP Scale: 1:1000
 1/1997/97-362-As-Builts/dgns/Vol 4/SH 820-TC Stage 1a-1/1/15200.dgn Last Rev: 10-5-07 By: gdr

No.	Revisions	By	Date
CITY OF WICHITA TYLER ROAD TRAFFIC CONTROL - STAGE IA STA. 5+200 TO STA. 5+800 SEDGWICK COUNTY			
Professional Engineering Consultants, P.A. 303 S. TOPEKA • WICHITA, KANSAS 67202 316-262-2691 • FAX 316-262-3003			
Designed by	RPG, RWM	Checked by	WDH
Drawn by	JGP	Date	April, 2002 Job No. 97362