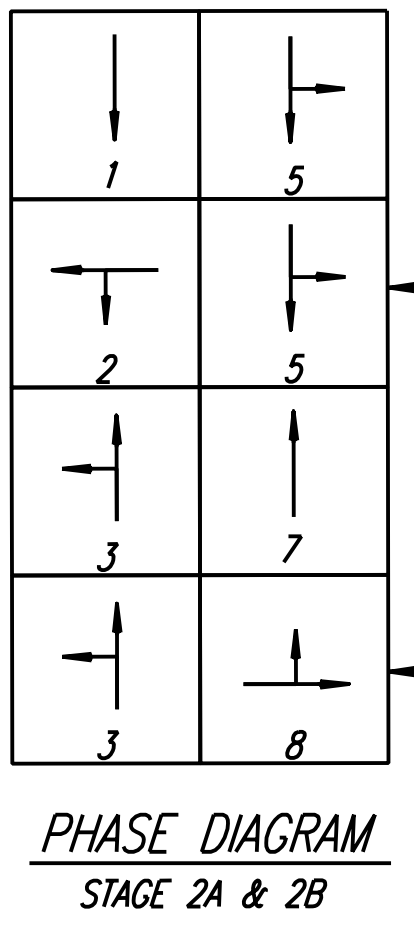
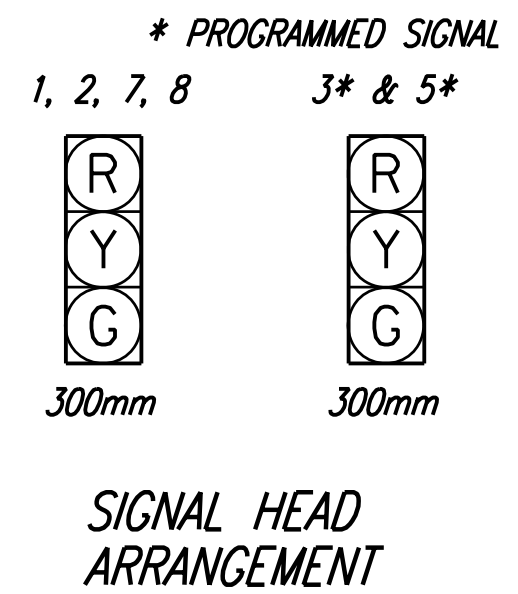
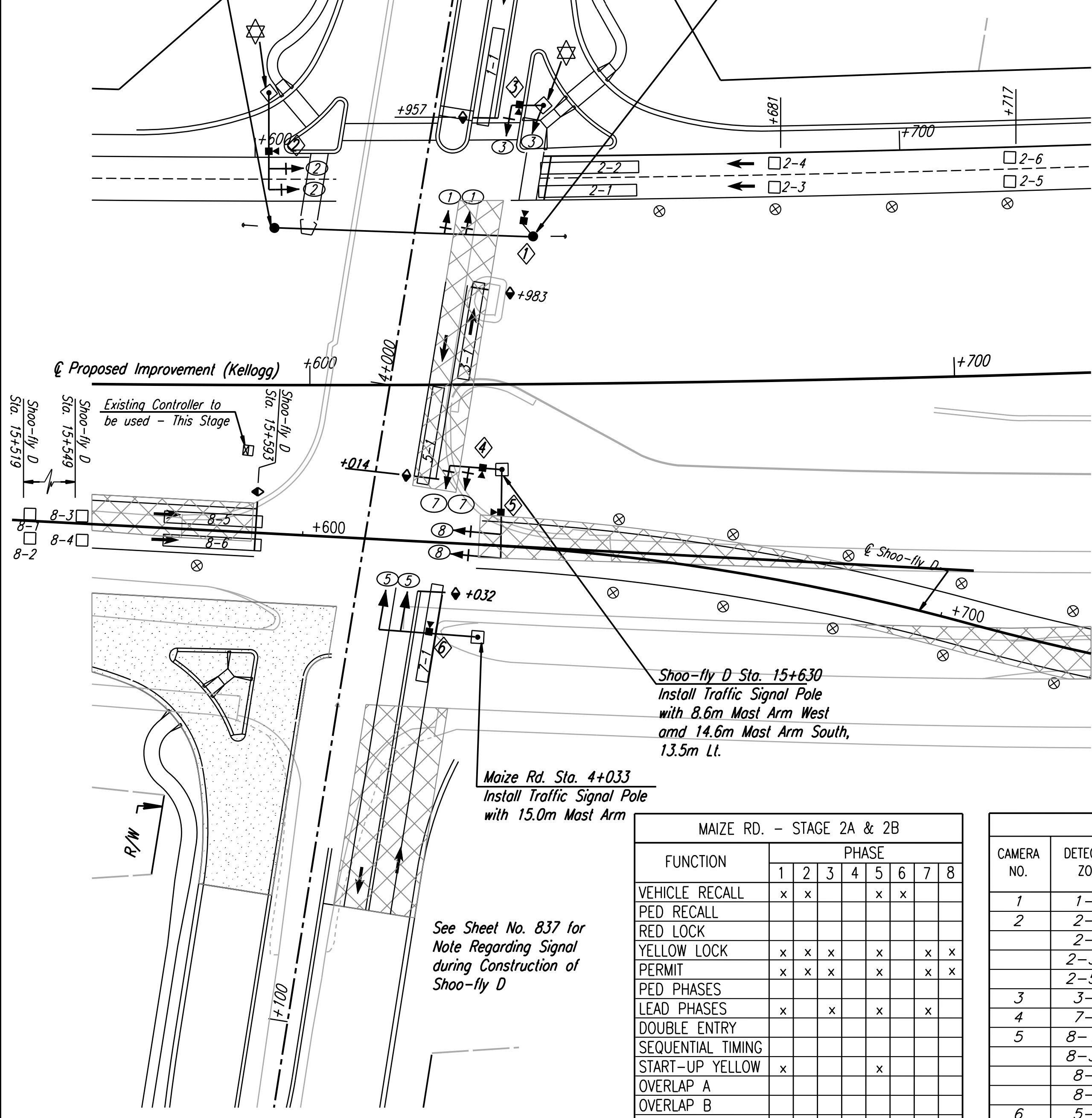


DATE	
BY	
REFERENCES NOTED	
REFERENCES CHECKED	



@ Fr. Rd. Lt. Sta. 15+603  
Install Support Pole for  
Temporary Span Wire  
11m Rt.

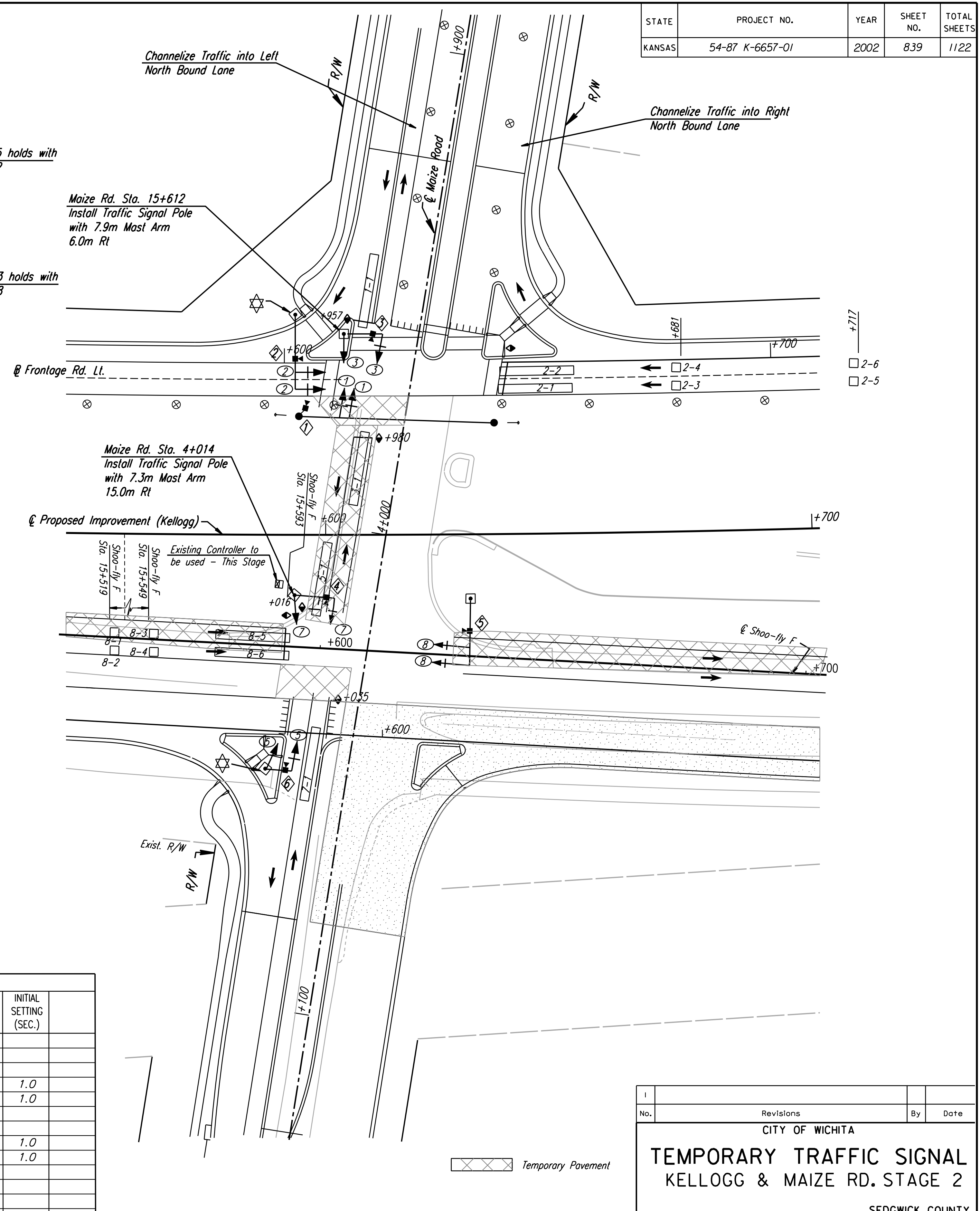
@ Fr. Rd. Lt. Sta. 15+644, 11.3m Rt.  
Install Support Pole for Temporary  
Span Wire



FUNCTION	PHASE							
	1	2	3	4	5	6	7	8
VEHICLE RECALL	x	x			x	x		
PED RECALL								
RED LOCK								
YELLOW LOCK	x	x	x		x		x	x
PERMIT	x	x	x		x		x	x
PED PHASES								
LEAD PHASES	x	x			x		x	
DOUBLE ENTRY								
SEQUENTIAL TIMING								
START-UP YELLOW	x				x			
OVERLAP A								
OVERLAP B								
OVERLAP C								
OVERLAP D								
EXCLUSIVE								
SIMULTANEOUS GAP								

DETECTOR SUMMARY - STAGE 2A and 2B							
CAMERA NO.	DETECTION ZONE	MODE	SIZE (LxW)	PHASE CALLED	PHASE EXTENDED	DELAY/STRETCH TIMER	INITIAL SETTING (SEC.)
1	1-1	Presence	15x1.8	1	1		
2	2-1	Presence	15x1.8	2	2		
	2-2	Presence	15x1.8	2	2		
	2-3,4	Pulse	1.8x1.8	2	2	Stretch	1.0
	2-5,6	Pulse	1.8x1.8	2	2	Stretch	1.0
3	3-1	Presence	15x1.8	3	3		
4	7-1	Presence	15x1.8	7	7		
5	8-1,2	Pulse	1.8x1.8	8	8	Stretch	1.0
	8-3,4	Pulse	1.8x1.8	8	8	Stretch	1.0
	8-5	Presence	15x1.8	8	8		
	8-6	Presence	15x1.8	8	8		
6	5-1	Presence	15x1.8	5	5		

① Detection Zones shall be adjusted to avoid detecting Cross-Traffic  
Note: Maize Road Detection Zones to Shift Location for Stage 2b.  
Detection Zone Layout based upon a design speed of 30 mph.



DSMR: RPG OPER: JGP Scale: 1:500  
 1/1997/97.362/As-Built/dgn/4/5h 839-Signal-Tempmaize.dgn Last Rev: 10-8-07 By: gdr

STAGE 2A

STAGE 2B

Temporary Pavement

UTILITIES  
See Plan Sheet  
for Utilities.

No.	Revisions	By	Date
CITY OF WICHITA			
<b>TEMPORARY TRAFFIC SIGNAL</b>			
<b>KELLOGG &amp; MAIZE RD. STAGE 2</b>			
SEDGWICK COUNTY			
<b>Professional Engineering Consultants, P.A.</b> 303 S. TOPEKA • WICHITA, KANSAS 67202 316-262-2691 • FAX 316-262-3003			
Designed by	RPG	Checked by	BER
Drawn by	JSB	Date	April, 2002 Job No. 97362