

N-5,075.8070, E-(-209.3871)
 @ 159th St. E., Sta. 50+72.80, 51.73' Lt.=
 WL 1, Sta. 0+00.00
 Remove Existing Blowoff Assembly,
 24" Cap and begin new water main installation.
 Connect to Existing 24" Pipe with clean
 Swabbed Pipe. (Fittings and Adaptors as Required)
 1- 24" x 16" CI CL MJ x PE Reducer
 (small end PE)
 1- 16" CI CL MJ 90° Bend
 Defl.= 91° 59' 30"
 1- 16" Anchored Valve Assembly, Special (E)
 (MJ Butterfly Valve)
 Top Valve Box El.= 1369.9

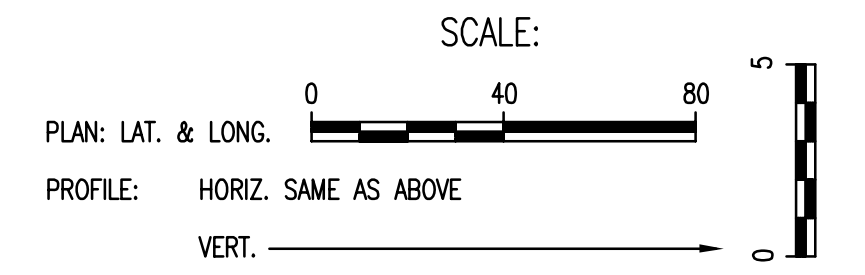
CAUTION!!!
 Buried Telephone Line shall be
 removed and reset as
 required by AT&T. Coordinate
 with AT&T, Mr. John Fagan at
 268-2102. (Provide at least 1
 weeks notice) Relocation costs
 if any to be borne by AT&T.

N-5,080.8139, E-(-93.5627)
 @ 159th St. E., Sta. 50+73.41, 64.00' Rt.=
 WL 1, Sta. 1+15.73
 1- Fire Hydrant Assembly (special)
 L= 15'
 Top Valve Box El.= 1371.7
 FH Bury Line El.= 1371.8
 (see detail sheet no. 6)

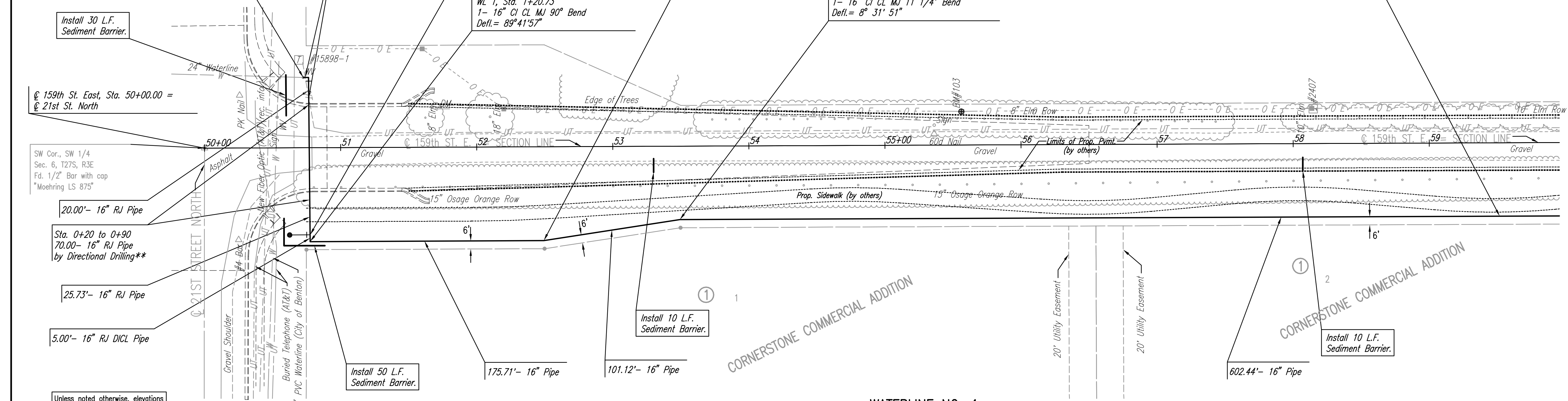
N-5,252.6523, E-(-89.3915)
 @ 159th St. E., Sta. 52+49.15, 69.00' Rt.=
 WL 1, Sta. 2+96.44
 1- 16" CI CL MJ 11 1/4° Bend
 Defl.= 8° 31' 51"

N-5,352.5892, E-(-104.8063)
 @ 159th St. E., Sta. 53+49.15, 54.00' Rt.=
 WL 1, Sta. 3+97.56
 1- 16" CI CL MJ 11 1/4° Bend
 Defl.= 8° 31' 51"

N-5,955.0240, E-(-107.3063)
 @ 159th St. E., Sta. 59+51.59, 54.00' Rt.=
 WL 1, Sta. 10+00.00
 Match Point



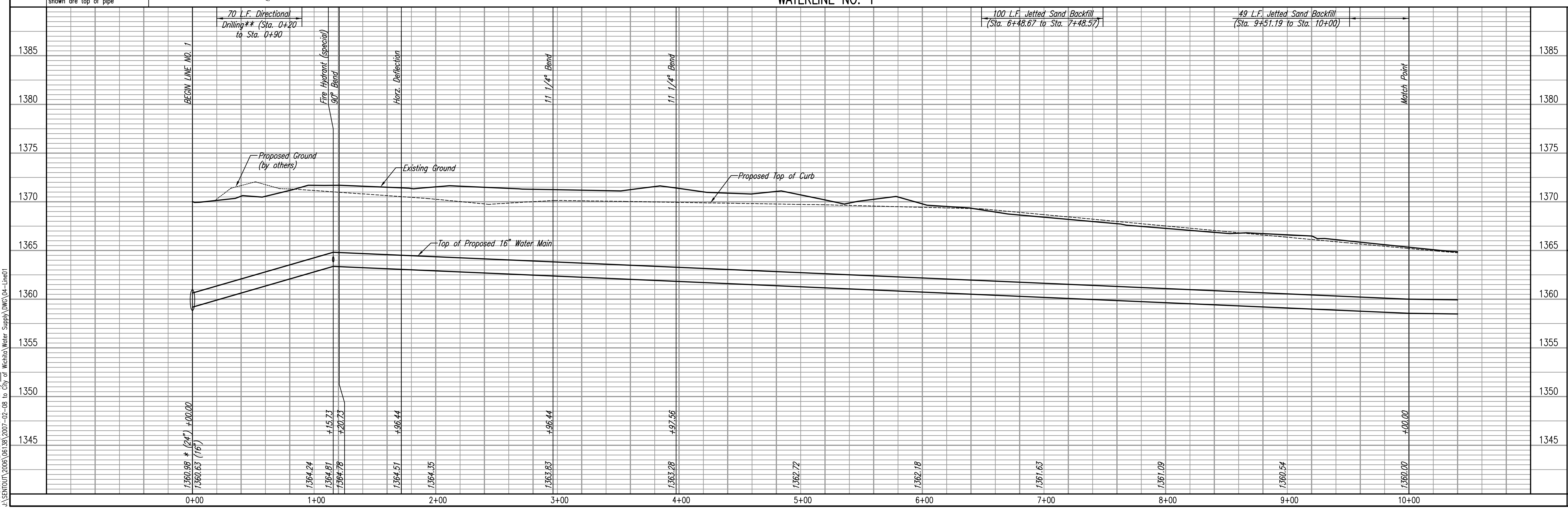
DATE	
BY	
CHECKED	
CHECKED	
PLAN	



* PRIOR TO BEGINNING CONSTRUCTION, THE CONTRACTOR SHALL EXCAVATE THE EXISTING 24" WATERLINE AT STATION 0+00.00 TO VERIFY PIPE SIZE, TYPE, FITTINGS, AND HORIZONTAL AND VERTICAL LOCATION. THE CONTRACTOR SHALL REPORT HIS FINDINGS TO THE ENGINEER SO THAT ANY NECESSARY PLAN MODIFICATIONS CAN BE MADE. ANY ADDITIONAL LABOR OR MATERIALS NECESSARY TO COMPLETE THE CONNECTION SHALL BE CONSIDERED SUBSIDIARY TO THE PROJECT.

** CONTRACTOR SHALL UTILIZE RESTRAINED JOINT PVC (CERTALOK) OR DUCTILE IRON PIPE.

DATE	
BY	
CHECKED	
CHECKED	
PROFILE	



CORNERSTONE COMMERCIAL AND SCHOOL ADDITIONS
 WATER SUPPLY LINE
WATERLINE NO. 1

Professional Engineering Consultants, P.A.
 303 S. TOPEKA, WICHITA, KANSAS 67202
 316-262-2291 • FAX 316-262-3063

Designed By: EJB
 Drawn By: CSL

Job No.: 35-06138-003-161
 Date: APRIL 2006

CITY OF WICHITA PRIVATE PROJECT NO. 1246 PPW (607953)
 CITY OF WICHITA CITY ENGINEER - JAMES L. ARMOUR, P.E.

Sheet 4 of 12

Saved: 02-08-2007 1:30:02 PM by JAW
 Plot Scale: 1"=40'-00" (02-08-2007 3:15:46 PM by BEJ
 J:\SENTOU\2006\06138\2007-02-08 to City of Wichita Water Supply\DWG\04-Line01