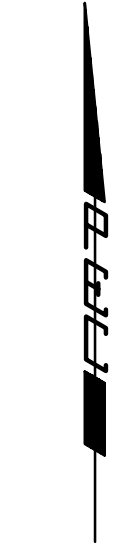


CORNERSTONE COMMERCIAL ADDITION

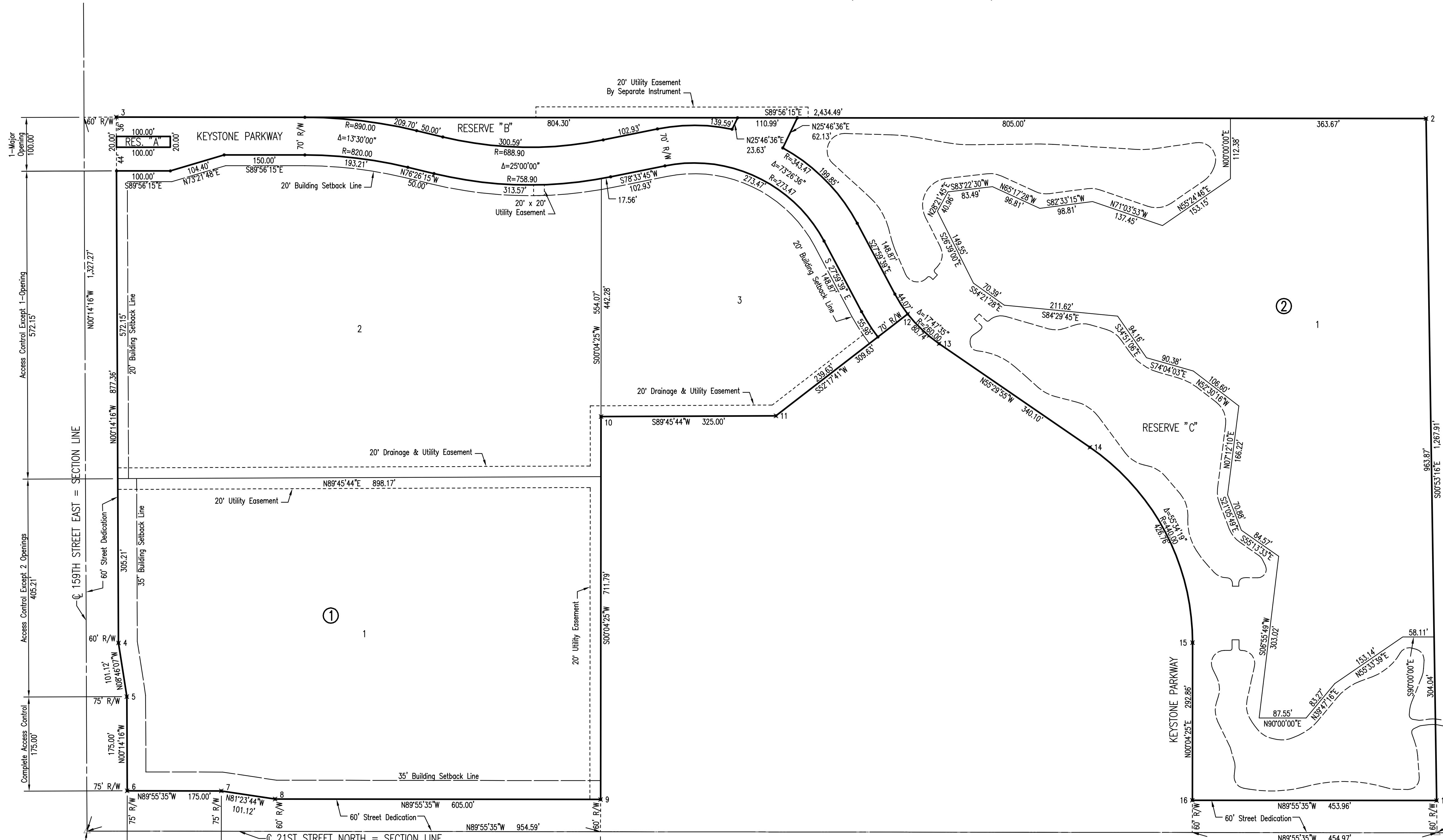
AN ADDITION TO ANDOVER, BUTLER COUNTY, KANSAS



SCALE: 1" = 100'

- = 1/2" REBAR W/PEC CAP UNLESS OTHERWISE NOTED
- △ = SECTION CORNER

COORDINATE LIST		
POINT	NORTH	EAST
1	5060.001289	2351.270221
2	6321.788447	2331.625167
3	6330.415105	-102.864023
4	5353.061554	-98.808235
5	5253.124661	-83.393392
6	5078.126168	-82.667189
7	5077.901487	92.332667
8	5062.773111	192.313326
9	5061.996357	797.312827
10	5773.787629	798.226690
11	5775.136311	1123.228690
12	5964.509431	1368.201442
13	5909.256746	1426.633482
14	5716.612896	1706.916434
15	5353.438932	1897.687915
16	5060.584114	1897.311921



S 1/4 Cor.
Sec. 6, T27S, R3E
Found Rectangular
Iron Bar

Served 02-08-2007 1:43:36 PM by JAW
 Plot Scale 1:100 02-08-2007 3:13:11 PM by BEJ
 J:\SEN\011\2006\06138\2007-02-08 to City of Wichita Water Supply\DWG\09-Cornerstone Commercial Addition

SW Cor., SW 1/4
Sec. 6, T27S, R3E
Fd. 1/2" Bar with cap
Moehring LS 875"

No.	Revision	By	Date
CORNERSTONE COMMERCIAL AND SCHOOL ADDITIONS WATER SUPPLY LINE			
CORNERSTONE COMMERCIAL ADDITION			
CITY OF WICHITA PRIVATE PROJECT NO. 1246 PPW (607853) CITY OF WICHITA CITY ENGINEER - JAMES L. ARMOUR, P.E.			
Professional Engineering Consultants, P.A.			
303 S. TOPKA • WICHITA, KANSAS 67202 316-262-2691 • FAX 316-262-3003			
Designed by	EJB	Job No.	35-06138-003
Drawn by		Date	APRIL 2006
			Sht. 9 of 12

