

GENERAL NOTES

- ALL ELEVATIONS SHOWN ARE USGS DATUM.
- CONTRACTOR WILL BE REQUIRED TO PROVIDE A MINIMUM ADVANCE NOTICE OF FORTY-EIGHT (48) HOURS TO UTILITY COMPANIES PRIOR TO STARTING ANY EXCAVATION AS FOLLOWS:

KANSAS ONE-CALL	687-2470
-----------------	----------

THE CONTRACTOR MUST NOTIFY THE FOLLOWING IN CASE OF AN EMERGENCY:

COX COMMUNICATIONS	262-0661
KANSAS GAS SERVICE	832-3169
WESTAR ENERGY	383-8600
AQUILA NETWORK	1(800)-527-0357
AT&T	1(800)-870-8390
CITY OF WICHITA WATER DEPARTMENT	262-6000
CITY OF WICHITA SEWER MAINTENANCE	262-6000
CITY OF ANDOVER	733-1303
- ALL WATER MAINS AND APPURTENANCES SHALL BE INSTALLED IN ACCORDANCE WITH CITY OF WICHITA, KANSAS STANDARD SPECIFICATIONS.
- THE WATER MAIN SHALL BE CONSTRUCTED ON THE ALIGNMENT SHOWN BY THE PLANS. TREES AND SHRUBS IN PUBLIC RIGHT-OF-WAY WHICH ARE IN DIRECT CONFLICT WITH PROPOSED NEW CONSTRUCTION SHALL BE REMOVED BY THE CONTRACTOR WITH THE ENGINEER'S APPROVAL. TREES AND SHRUBS WHICH ARE NOT IN DIRECT CONFLICT WITH PROPOSED NEW CONSTRUCTION SHALL BE SAVED AND PROTECTED FROM DAMAGE. THE COST FOR ANY NECESSARY TREE TRIMMING, CLEARING AND/OR GRUBBING SHALL BE SUBSIDIARY TO SITE CLEARING.
- OPENINGS AND CLOSING WATER VALVES SHALL BE DONE SLOWLY TO PREVENT DAMAGE TO THE WATER DISTRIBUTION SYSTEM FROM WATER HAMMER. ALL VALVES CLOSED BY THE CONTRACTOR MUST BE REOPENED AS NEW CONSTRUCTION PERMITS. PROJECT INSPECTOR MUST ASCERTAIN THAT ANY VALVE CLOSED BY THE CONTRACTOR IS REOPENED. CONTRACTOR WILL BE PERMITTED TO OPERATE WATER VALVES ONLY WHEN THE PROJECT INSPECTOR ASSIGNED TO THE PROJECT IS PRESENT.
- THE CONTRACTOR SHALL NOT START WORK ON THE PROJECT UNTIL THE PROJECT INSPECTOR IS ASSIGNED TO THE PROJECT AND IS PRESENT ON THE SITE. ANY WORK DONE WITHOUT INSPECTION WILL BE REQUIRED TO BE UNCOVERED FOR INSPECTION.
- THE CONTRACTOR SHALL GIVE ALL PROPERTY OWNERS AND/OR TENANTS OF DEVELOPED PROPERTY DIRECTLY ABUTTING THE CONSTRUCTION OF THIS PROJECT A MINIMUM OF TEN (10) DAYS ADVANCE NOTICE PRIOR TO START OF CONSTRUCTION.
- THE CONTRACTOR SHALL BE RESPONSIBLE FOR PRESERVING PROPERTY IRONS. THE CONTRACTOR SHALL BE REQUIRED TO RE-ESTABLISH ANY PROPERTY IRONS WHICH ARE DAMAGED OR DESTROYED BY HIS CONSTRUCTION OPERATIONS. SUCH IRONS SHALL BE RE-ESTABLISHED BY A LICENSED LAND SURVEYOR IN ACCORDANCE WITH STATE LAWS. ALL COSTS FOR THIS WORK SHALL BE SUBSIDIARY TO SITE RESTORATION.
- THE CONTRACTOR SHALL RESTORE ALL DITCHES, SWALES, ROAD SHOULDERS, ENTRANCES, AND BANKLINES TO THEIR ORIGINAL SLOPES AND GRADES EXCEPT AS SHOWN OTHERWISE.
- NO SERVICES WILL BE INSTALLED AS PART OF THIS PROJECT.
- INTERURBAN TRAFFIC GENERATED OUTSIDE THE PROJECT AREA AND LOCAL BUSINESS OR RESIDENTIAL TRAFFIC GENERATED WITHIN THE PROJECT AREA ARE TO BE CARRIED THROUGH CONSTRUCTION AS FURTHER PROMULGATED BY PROJECT SPECIAL PROVISIONS. THE CONTRACTOR SHALL UTILIZE BARRICADES, SIGNS, GUARDS, AND FLAGMEN IN ACCORDANCE WITH THE MANUAL ON UNIFORM TRAFFIC CONTROL DEVICES.

BENCHMARKS

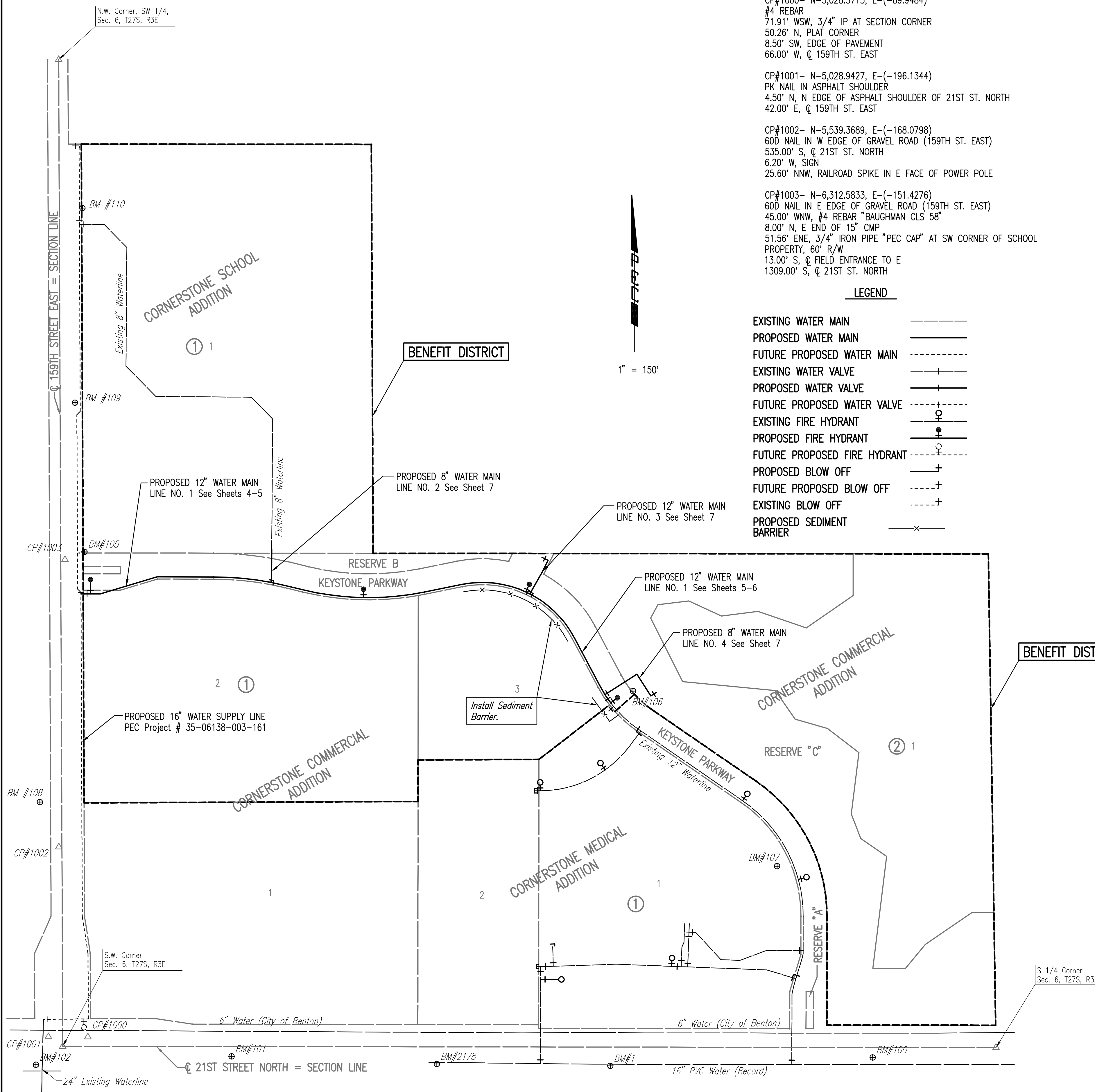
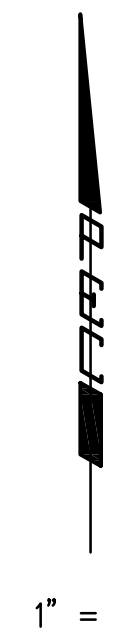
- BM #1- CHISELED 'v', ON THE TOP OF A CURB, ON THE N END OF THE MEDIAN IN QUAIL CROSSING STREET, ON THE S SIDE OF 21ST ST. N.
ELEV. = 1355.93
- BM #80- (NOT SHOWN) DATUM BM, CHISELED 'v' ON THE CENTER OF THE TOP OF THE S HEADWALL RCB UNDER 21ST ST. NORTH, 200' E OF THE S 1/4 CORNER SEC. 6, T27S, R3E, 1/2 MILE W OF ANDOVER ROAD, S SIDE 21ST ST. NORTH.
ELEV. = 1345.60
- BM #81- (NOT SHOWN) CHISELED 'd' AT THE SE CORNER OF THE CURB INLET, ON THE S SIDE OF 21ST ST. NORTH, 250' E OF THE S 1/4 CORNER SEC. 6, T27S, R3E.
ELEV. = 1346.45
- BM #100- CHISELED 'v' IN THE TOP OF THE S CURB OF 21ST ST. N, N OF A POWER POLE, 700' E OF QUAIL CROSSING, 300' W OF THE S 1/4 CORNER SEC. 6, T27S, R3E.
ELEV. = 1349.33
- BM #101- CHISELED 'v' IN THE TOP OF THE S CURB OF 21ST ST. N, N OF A POWER POLE, CREST OF A HILL, 450' E OF THE CENTERLINE OF 159TH ST. EAST.
ELEV. = 1372.64
- BM #102- 60D STEP, E FACE OF A POWER POLE, SW OF THE INTERSECTION OF 21ST ST. N & 159TH ST. E.
ELEV. = 1370.26
- BM #105- TOP OF 'T' POST, 5' NE OF THE SW CORNER OF LOT 1, BLOCK 1, CORNERSTONE SCHOOL ADDITION, 64' E OF THE W LINE OF SEC. 6, T27S, R3E, 1330' N OF THE Q OF 21ST ST. N, ON THE E SIDE OF 159TH ST. EAST.
ELEV. = 1363.41
- BM #106- TOP OF 'T' POST, 5' SE OF THE PLAT CORNER FOR CORNERSTONE SCHOOL ADDITION, ON THE NE R/W LINE FOR KEYSTONE PARKWAY, 70' NE OF THE NORTHERN MOST CORNER FOR LOT 1, BLOCK 1, CORNERSTONE MEDICAL ADDITION, 960' N OF THE Q OF 21ST ST. N, 1530' E OF THE Q OF 159TH ST. E.
ELEV. = 1351.52
- BM #107- CHISELED 'd' IN THE E EDGE OF THE TOP OF THE LIGHT POLE BASE, E SIDE OF THE MEDICAL CLINIC, ON THE N SIDE OF THE PARKING LOT ENTRANCE, 490' N OF THE Q OF 21ST ST. N, 1920' E OF THE Q OF 159TH ST. E, ON THE W SIDE OF KEYSTONE PARKWAY.
ELEV. = 1353.74
- BM #108- T-POST 5' N OF 3RD POWER POLE N OF 21ST ST. N ON W SIDE 159TH ST. E.
ELEV. = 1369.44
- BM #109- CHISELED 'd' ON TOP OF THE CURB W ON THE WEST END OF THE CONCRETE MEDIAN OF THE S ENTRANCE CORNER STONE ELEMENTARY SCHOOL.
ELEV. = 1363.65
- BM #110- CHISELED 'd' ON THE TOP OF THE W SIDE CONCRETE LIGHT BASE, LOCATED ON THE N SIDE OF THE N ELEMENTARY SCHOOL ENTRANCE, 80' ± E OF THE Q OF 159TH ST.
ELEV. = 1367.13
- BM #111- (NOT SHOWN) T-POST ON THE E EDGE OF 159TH ST. E, N OF THE W 1/4 CORNER SECTION, 0.5' N OF THE E END OF THE CROSS ROAD CULVERT PIPE.
ELEV. = 1364.14
- BM #2178- 60D STEP, N FACE OF POWER POLE, S SIDE OF 21ST ST. NORTH, 467' W OF Q OF QUAIL CROSSING STREET.
ELEV. = 1364.42

CONTROL POINTS

- CP#1000- N-5,028.3713, E-(-89.9484)
#4 REBAR
71.91' WSW, 3/4" IP AT SECTION CORNER
50.26' N, PLAT CORNER
8.50' SW, EDGE OF PAVEMENT
66.00' W, Q 159TH ST. EAST
- CP#1001- N-5,028.9427, E-(-196.1344)
PK NAIL IN ASPHALT SHOULDER
45.0' N, N EDGE OF ASPHALT SHOULDER OF 21ST ST. NORTH
42.00' E, Q 159TH ST. EAST
- CP#1002- N-5,539.3689, E-(-168.0798)
60D NAIL IN W EDGE OF GRAVEL ROAD (159TH ST. EAST)
535.00' S, Q 21ST ST. NORTH
6.20' W, SIGN
25.60' NNW, RAILROAD SPIKE IN E FACE OF POWER POLE
- CP#1003- N-6,312.5833, E-(-151.4276)
60D NAIL IN E EDGE OF GRAVEL ROAD (159TH ST. EAST)
45.00' WNW, #4 REBAR "BAUGHMAN CLS 58"
8.00' N, E END OF 15" CMP
51.56' ENE, 3/4" IRON PIPE "PEC CAP" AT SW CORNER OF SCHOOL PROPERTY, 60' R/W
13.00' S, Q FIELD ENTRANCE TO E
1309.00' S, Q 21ST ST. NORTH

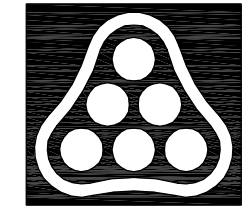
LEGEND

- EXISTING WATER MAIN
- PROPOSED WATER MAIN
- FUTURE PROPOSED WATER MAIN
- EXISTING WATER VALVE
- PROPOSED WATER VALVE
- FUTURE PROPOSED WATER VALVE
- EXISTING FIRE HYDRANT
- PROPOSED FIRE HYDRANT
- FUTURE PROPOSED FIRE HYDRANT
- PROPOSED BLOW OFF
- FUTURE PROPOSED BLOW OFF
- EXISTING BLOW OFF
- PROPOSED SEDIMENT BARRIER



SEE SHEET NO. 8, 9 & 10 FOR PLAT COORDINATES

No.	Revision	By	Date
CORNERSTONE COMMERCIAL AND SCHOOL ADDITIONS WATER DISTRIBUTION IMPROVEMENTS KEY MAP AND GENERAL NOTES CITY OF WICHITA PRIVATE PROJECT NO. 1247 P/PW (607853) CITY OF WICHITA CITY ENGINEER - JAMES L. ARMOUR, P.E. Professional Engineering Consultants, P.A. 303 S. TOPKA • WICHITA, KANSAS 67202 316-262-2691 • FAX 316-262-3003			
Designed by	EJB	Job No.	35-06138-004
Drawn by	JAN	Date	APRIL 2006



Sowed 02-15-2007 3:13:00 PM by CSI
 Plot Scale 1:150 02-15-2007 5:05:30 PM by BEJ
 J:\SENTOU\2006\06138\2007-02-16 to Pop\Water Distribution\DWG 02-Keymap