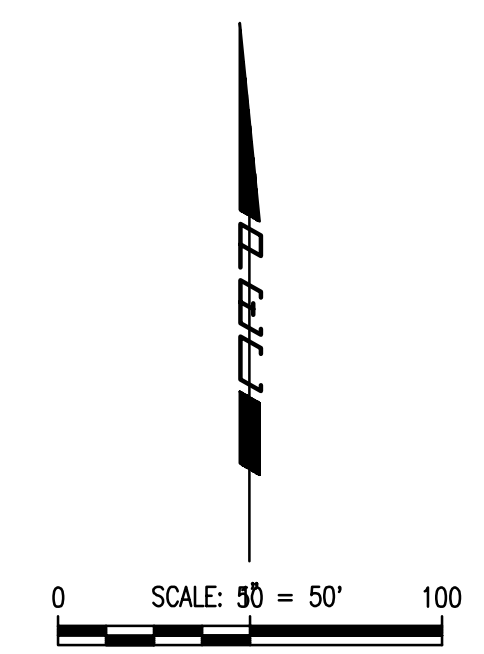


# CORNERSTONE MEDICAL ADDITION

AN ADDITION TO ANDOVER, BUTLER COUNTY, KANSAS

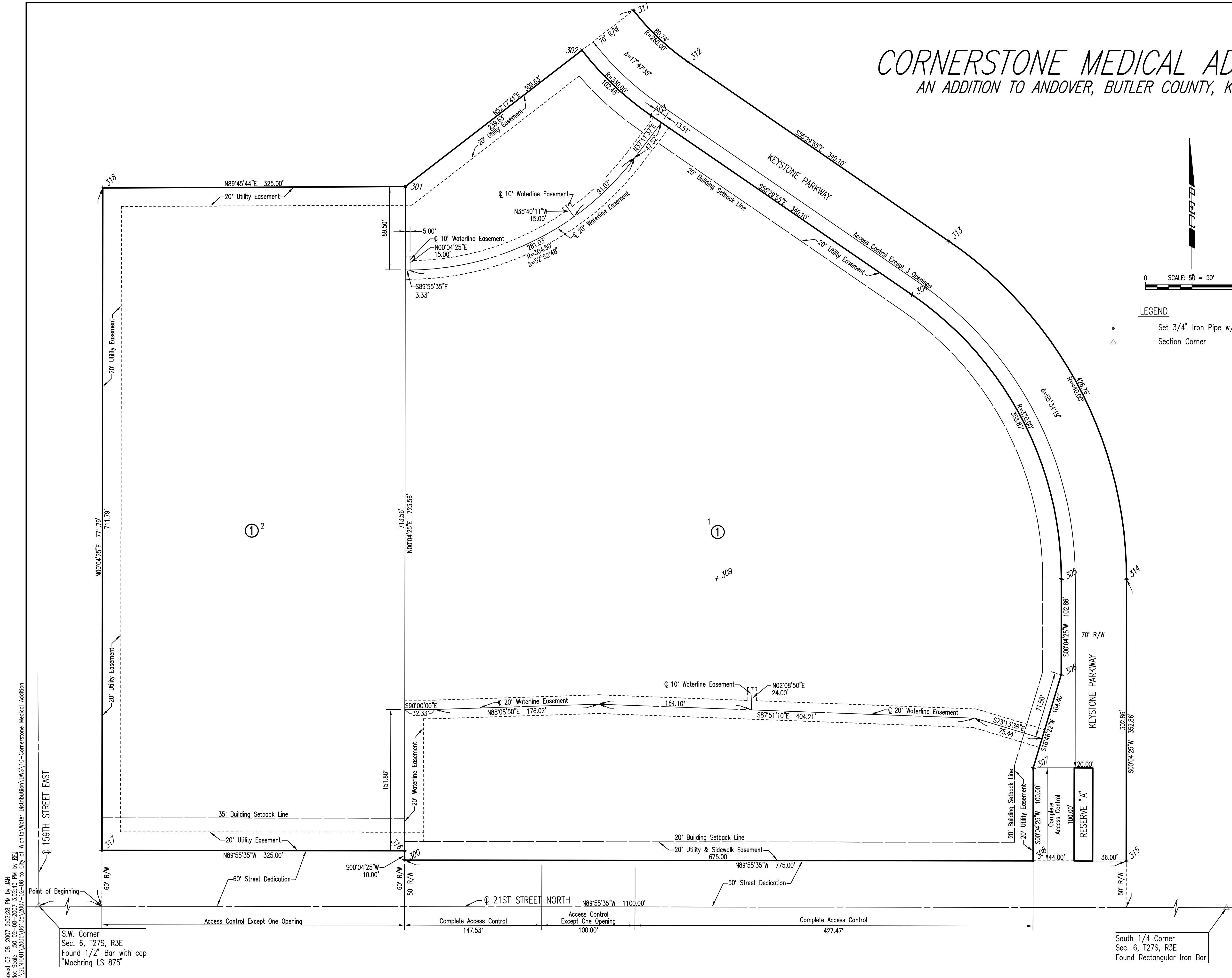


**LEGEND**

- Set 3/4" Iron Pipe w/ PEC Cap
- △ Section Corner

COORDINATE LIST		
POINT	NORTH	EAST
300	5,051.5792	1,122.2997
301	5,775.1363	1,123.2287
302	5,921.6974	1,312.8198
303	5,851.5689	1,386.9835
304	5,658.9251	1,667.2665
305	5,353.5288	1,827.6880
306	5,250.6732	1,827.5559
307	5,150.7118	1,797.4276
308	5,050.7116	1,797.2992
309	5,354.0038	1,457.6883
* 310	6,123.5257	1,573.9047
311	5,964.5094	1,368.2014
312	5,909.2567	1,426.6335
313	5,716.6129	1,706.9164
314	5,353.4389	1,897.6879
315	5,050.5832	1,897.2991
316	5,061.5791	1,122.3126
317	5,061.9964	797.3128
318	5,773.7876	798.2267

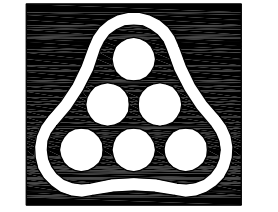
\* NOT SHOWN  
 +500 = COORDINATE POINT NO.



Sowed 02-08-2007 2:02:28 PM by JAW  
 Plot Scale 1/8" = 10'-0" 02-08-2007 3:02:43 PM by BEJ  
 J:\SEN\001\2006\06138\2007-02-08 to City of Wichita Water Distribution\DWG\10-Cornerstone Medical Addition

S.W. Corner  
 Sec. 6, T27S, R3E  
 Found 1/2" Bar with cap  
 "Moehring LS 875"

South 1/4 Corner  
 Sec. 6, T27S, R3E  
 Found Rectangular Iron Bar



No.	Revision	By	Date

**CORNERSTONE COMMERCIAL AND SCHOOL ADDITIONS**  
**WATER DISTRIBUTION IMPROVEMENTS**  
**CORNERSTONE MEDICAL ADDITION**  
 CITY OF WICHITA PRIVATE PROJECT NO. 1247 PPW (607853)  
 CITY OF WICHITA CITY ENGINEER - JAMES L. ARMOUR, P.E.  
**Professional Engineering Consultants, P.A.**  
 303 S. TOPKA • WICHITA, KANSAS 67202  
 316-262-2691 • FAX 316-262-3003

Designed by	EJB	Job No.	35-06138-004	SHL 10 of 14
Drawn by		Date	APRIL 2006	