

FHWA REGION NO.	STATE	PROJECT NUMBER	FISCAL YEAR	SHEET NUMBER	TOTAL SHEETS
7	KANSAS	87N-0245-01	2007	8	55

CENTERLINE P.I. DATA
 STA. 28+19.76, 6.5' RT
 N: 19819.7500
 E: 20006.0823

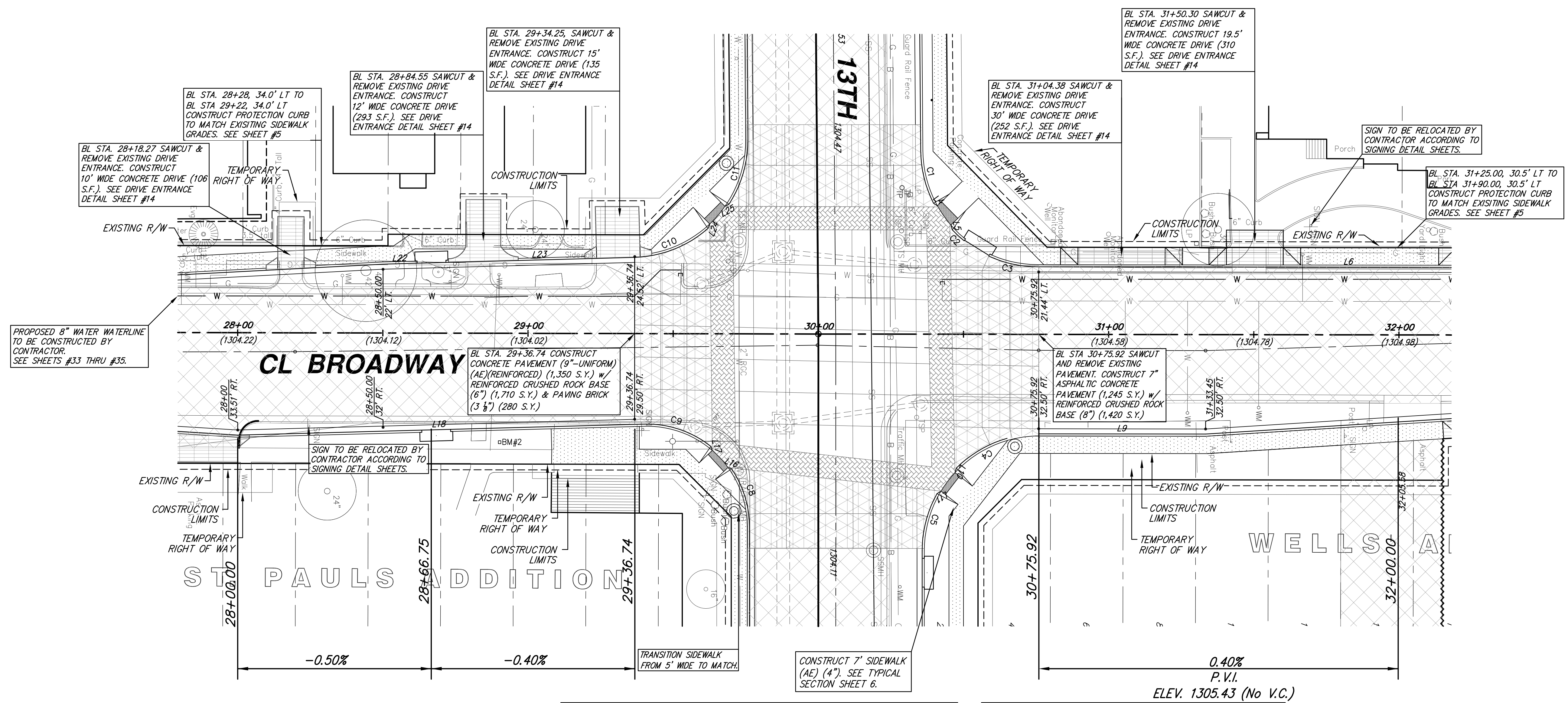
BENCHMARK #2
 STA. 28+90.30, 37.48' RT
 BRASS DISK SET IN CONG.
 N: 19890.2169
 E: 20037.2283
 ELEV. 1304.20 FEET

SW COR. SEC 9, T27W, R1E
 STA. 30+00.00
 N: 20000.0000
 E: 20000.0000
 1/2" IRON PIPE IN THIMBLE
 1. MAG NAIL IN NW FACE OF PP 47.92' NE
 2. CHISLED "X" SE CURB RETURN 50.87' SE
 3. CHISLED "X" SW CURB RETURN 41.95' SW
 4. MAG NAIL IN NW FACE OF PP 58.07' NW

CENTERLINE P.I. DATA
 STA. 30+75.93, 5.5' RT
 N: 20075.9186
 E: 20005.6153

CENTERLINE P.I. DATA
 STA. 31+33.41, 5.5' RT
 N: 20133.4021
 E: 20005.7026

Intersection Details
 See Sheet No. 12



PROPOSED 8" WATER WATERLINE TO BE CONSTRUCTED BY CONTRACTOR. SEE SHEETS #33 THRU #35.

CL BROADWAY

ST PAULS ADDITION

WELLS ADDITION

-0.50%

-0.40%

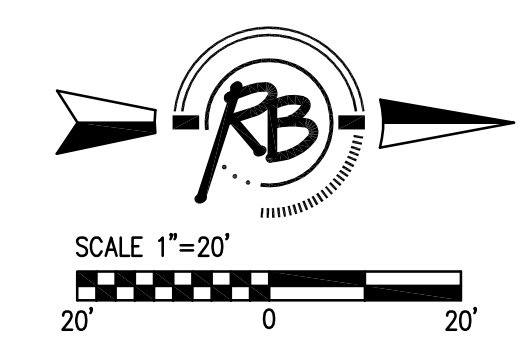
0.40%
 P.V.I.
 ELEV. 1305.43 (No V.C.)

LINE TABLE

LINE	LENGTH	BEARING	START NORTHING	START EASTING	END NORTHING	END EASTING
L1	15.85	N89°37'10"E	20021.14	19683.82	20021.24	19689.88
L2	125.75	N84°00'09"E	20021.24	19689.88	20034.38	19824.74
L3	112.19	N89°33'10"E	20034.38	19824.74	20035.26	19836.83
L4	1.61	S34°03'22"W	20041.01	19855.85	20038.68	19854.95
L5	1.70	S74°08'08"W	20046.13	19864.13	20045.66	19862.49
L6	214.53	N02°05'13"E	20075.45	19976.86	20289.98	19977.19
L7	10.00	N03°27'52"E	20289.98	19977.19	20289.98	19977.79
L8	177.54	S01°36'40"E	20310.58	20023.27	20133.39	20034.45
L9	57.48	N00°05'13"E	20075.92	20034.37	20133.39	20034.45
L10	1.64	N73°13'22"W	20047.08	20047.72	20047.55	20046.14
L11	1.63	N90°00'00"W	20040.87	20054.97	20042.25	20054.10
L12	86.12	N90°00'00"W	20035.75	20160.74	20035.75	20174.62
L13	120.27	S83°57'40"E	20036.03	20192.76	20023.38	20312.36
L14	25.00	N89°36'46"E	19976.25	20299.99	19976.42	20324.99
L15	233.76	N90°00'00"W	19976.25	20300.00	19976.25	20066.24
L16	1.34	N20°43'47"E	19968.89	20045.94	19970.14	20046.41
L17	1.44	N71°04'30"E	19963.00	20038.70	19963.47	20040.06
L18	139.05	S01°32'41"E	19938.99	20031.05	19798.98	20034.80
L19	82.74	N03°33'45"E	19717.47	20029.86	19800.05	20034.80
L20	22.46	N02°25'20"E	19695.01	20029.54	19717.47	20029.66
L21	155.27	N02°59'52"W	19895.03	19884.07	19850.09	19875.95
L22	11.73	S01°32'42"E	19861.81	19975.63	19850.09	19875.95
L23	64.86	S01°32'42"E	19936.56	19973.62	19871.72	19975.37
L24	1.66	N69°07'29"W	19962.00	19963.66	19962.59	19962.11
L25	1.62	S28°27'01"E	19969.26	19955.27	19967.83	19956.04
L26	248.88	N89°40'00"E	19974.28	19684.19	19975.73	19933.07

CURVE TABLE

CURVE	LENGTH	RADIUS	DELTA	TANGENT	CHORD BEARING	CHORD
C1	18.73	40.25	26°39'24"	9.54	N76°13'27"E	18.58
C2	5.59	40.25	7°57'26"	2.80	N42°54'01"E	5.39
C3	17.28	40.25	24°35'34"	8.77	N12°21'00"E	17.14
C4	20.48	40.25	29°12'55"	10.49	S30°24'18"E	20.26
C5	20.52	40.25	29°12'47"	10.49	S72°21'37"E	20.30
C6	14.53	9.25	90°00'00"	9.25	N45°00'00"E	13.08
C7	13.56	9.25	81°57'52"	8.32	S41°58'56"E	12.37
C8	21.06	35.25	34°14'00"	10.86	S72°53'00"W	20.75
C9	25.77	35.25	41°53'34"	13.49	S17°40'14"W	25.20
C10	27.87	40.25	39°40'01"	14.52	N21°22'42"W	27.31
C11	23.46	40.25	33°23'26"	12.07	N73°45'07"W	23.13



LEGEND

[Symbol]	Pavement Removal
[Symbol]	Sidewalk Construction (4 inch)
[Symbol]	Concrete Pavement (8 inch)
[Symbol]	Compacted Subgrade (6 inch)
[Symbol]	Concrete Pavement (9 inch)
[Symbol]	Reinforced Crushed Rock Base (6 inch)
[Symbol]	Paving Brick (4 inch)
[Symbol]	Concrete Base (9 inch)
[Symbol]	Reinforced Crushed Rock Base (6 inch)
[Symbol]	Mill Surface (2 inch)
[Symbol]	Overlay with BM-2, (PG 70-28)

- GENERAL CONSTRUCTION NOTES:**
- PROJECT BASELINE IS THE SECTION LINE COMMON TO SECTION 8, 9, 16 & 17, TOWNSHIP 27 WEST, RANGE 1 EAST OF THE SIXTH PRINCIPAL MERIDIAN. ALL CONSTRUCTION RELATED TO THE BROADWAY IMPROVEMENTS IS STATIONED OFF OF THIS PROJECT BASELINE UNLESS NOTED OTHERWISE.
 - LINE AND CURVE TABLE INFORMATION IS FOR THE FACE OF THE CURB.
 - ALL ELEVATIONS ALONG CURB & GUTTER ARE TOP OF CURB & FLOWLINE.
 - ALL POINT OF INTERSECTION INFORMATION ALONG CURB & GUTTER IS STATIONED TO THE HIGH LIP OF CURB FROM THE PROJECT BASELINE.

REVISED: 11/07/07

13th St. N. and Broadway Improvements
Broadway Paving Plans Sta. 28+00 to 32+00

Ruggles & Bohm, P.A.
 Engineering, Surveying, Land Planning

924 North Main
 Wichita, Kansas 67203
 www.rbkansas.com

(316) 264-8008
 (316) 264-4621 fax
 E-mail: info@rbkansas.com

DESIGN	PDC	DATE	Mar. 20, 2006
DRAWN	PDC	UTILITY	
REVIEW		DATE	Sept. 15, 2004
PROJECT NUMBER	706705	SHEET	8 OF 55