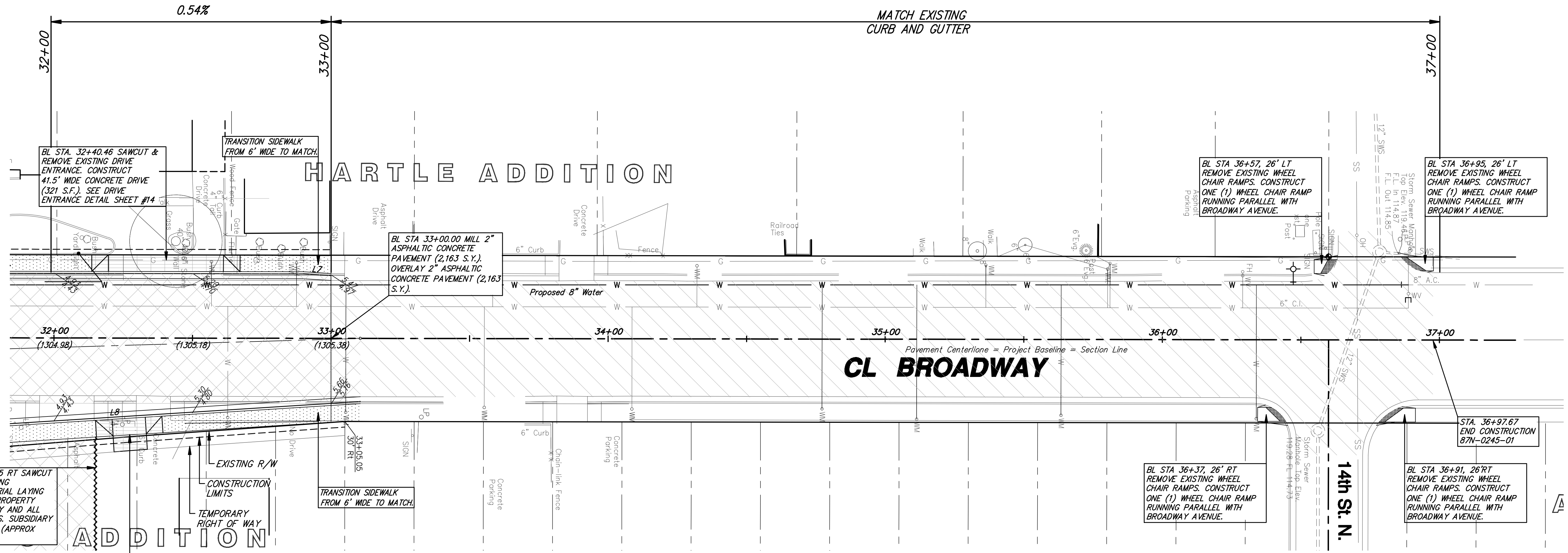


CENTERLINE P.I. DATA
 STA. 33+10.54
 N: 20310.5393
 E: 20000.4715

FHWA REGION NO.	STATE	PROJECT NUMBER	FISCAL YEAR	SHEET NUMBER	TOTAL SHEETS
7	KANSAS	87N-0245-01	2007	9	55



BL STA. 32+15.05 RT SAWCUT & REMOVE EXISTING ASPHALTIC MATERIAL LAYING SOUTH OF THIS PROPERTY LINE. RESEED ANY AND ALL DISTURBED AREAS. SUBSIDIARY TO OTHER ITEMS. (APPROX 725 S.Y.)

BL STA. 32+27.40 SAWCUT & REMOVE EXISTING DRIVE ENTRANCE. CONSTRUCT 12" WIDE CONCRETE DRIVE (228 S.F.). SEE DRIVE ENTRANCE DETAIL SHEET #14

BL STA. 32+40.46 SAWCUT & REMOVE EXISTING DRIVE ENTRANCE. CONSTRUCT 41.5' WIDE CONCRETE DRIVE (321 S.F.). SEE DRIVE ENTRANCE DETAIL SHEET #14

BL STA 33+00.00 MILL 2" ASPHALTIC CONCRETE PAVEMENT (2,163 S.Y.). OVERLAY 2" ASPHALTIC CONCRETE PAVEMENT (2,163 S.Y.)

BL STA 36+57, 26' LT REMOVE EXISTING WHEEL CHAIR RAMPS. CONSTRUCT ONE (1) WHEEL CHAIR RAMP RUNNING PARALLEL WITH BROADWAY AVENUE.

BL STA 36+95, 26' LT REMOVE EXISTING WHEEL CHAIR RAMPS. CONSTRUCT ONE (1) WHEEL CHAIR RAMP RUNNING PARALLEL WITH BROADWAY AVENUE.

BL STA 36+37, 26' RT REMOVE EXISTING WHEEL CHAIR RAMPS. CONSTRUCT ONE (1) WHEEL CHAIR RAMP RUNNING PARALLEL WITH BROADWAY AVENUE.

BL STA 36+91, 26' RT REMOVE EXISTING WHEEL CHAIR RAMPS. CONSTRUCT ONE (1) WHEEL CHAIR RAMP RUNNING PARALLEL WITH BROADWAY AVENUE.

STA. 36+97.67 END CONSTRUCTION 87N-0245-01

LEGEND

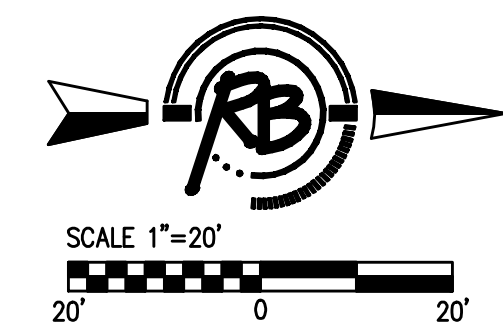
- Pavement Removal
- Sidewalk Construction (4 inch)
- Concrete Pavement (8 inch)
Compacted Subgrade (6 inch)
- Concrete Pavement (9 inch)
Reinforced Crushed Rock Base (6 inch)
- Paving Brick (4 inch)
Concrete Base (9 inch)
Reinforced Crushed Rock Base (6 inch)
- Mill Surface (2 inch)
Overlay with BM-2, (PG 70-28)

GENERAL CONSTRUCTION NOTES:

1. PROJECT BASELINE IS THE SECTION LINE COMMON TO SECTION 8, 9, 16 & 17, TOWNSHIP 27 WEST, RANGE 1 EAST OF THE SIXTH PRINCIPAL MERIDIAN. ALL CONSTRUCTION RELATED TO THE BROADWAY IMPROVEMENTS IS STATIONED OFF OF THIS PROJECT BASELINE UNLESS NOTED OTHERWISE.
2. LINE AND CURVE TABLE INFORMATION IS FOR THE FACE OF THE CURB.
3. ALL ELEVATIONS ALONG CURB & GUTTER ARE TOP OF CURB & FLOWLINE.
4. ALL POINT OF INTERSECTION INFORMATION ALONG CURB & GUTTER IS STATIONED TO THE HIGH LIP OF CURB FROM THE PROJECT BASELINE.

LINE	LENGTH	BEARING	START NORTHING	START EASTING	END NORTHING	END EASTING
L1	15.85	N89°37'10"E	20021.14	19683.82	20021.24	19689.68
L2	125.75	N84°00'09"E	20021.24	19699.68	20034.38	19824.74
L3	112.19	N89°33'10"E	20034.38	19824.74	20035.26	19836.93
L4	1.61	S34°03'22"W	20041.01	19955.85	20039.68	19954.95
L5	1.70	S74°08'08"W	20046.13	19964.13	20045.66	19962.49
L6	214.53	N00°05'13"E	20075.45	19976.86	20288.98	19977.19
L7	10.00	N03°27'52"E	20289.98	19977.19	20289.96	19977.79
L8	177.54	S03°36'40"E	20310.58	20023.27	20133.39	20034.45
L9	57.48	N00°05'13"E	20075.92	20034.37	20133.39	20034.45
L10	1.64	N73°13'22"W	20047.08	20047.72	20047.55	20046.14
L11	1.63	N32°25'09"W	20040.87	20054.97	20042.25	20054.10
L12	86.12	N90°00'00"W	20035.75	20160.74	20035.75	20074.62
L13	120.27	S83°57'40"E	20036.03	20192.76	20023.38	20312.36
L14	25.00	N89°36'46"E	19976.25	20299.99	19976.42	20324.99
L15	233.76	N90°00'00"W	19976.25	20300.00	19976.25	20066.24
L16	1.34	N20°43'47"E	19968.89	20045.94	19970.14	20046.41
L17	1.44	N71°04'30"E	19963.00	20038.70	19963.47	20040.06
L18	139.05	S01°32'41"E	19938.99	20031.05	19799.98	20034.80
L19	82.74	N03°33'45"E	19717.47	20029.66	19800.05	20034.80
L20	22.46	N00°17'50"E	19693.01	20029.54	19717.47	20029.66
L21	153.27	N02°59'52"W	19693.03	19894.07	19650.09	19775.95
L22	11.73	S01°32'42"E	19861.81	19975.63	19850.09	19975.95
L23	64.86	S01°32'42"E	19836.56	19973.62	19871.72	19875.37
L24	1.66	N89°07'29"W	19862.00	19863.66	19862.59	19862.11
L25	1.62	S28°27'01"E	19859.26	19855.27	19867.83	19856.04
L26	248.88	N89°40'00"E	19974.28	19684.19	19975.73	19933.07

CURVE	LENGTH	RADIUS	DELTA	TANGENT	CHORD BEARING	CHORD
C1	18.73	40.25	26°39'24"	9.54	N76°13'27"E	18.56
C2	5.59	40.25	7°57'26"	2.80	N42°54'01"E	5.59
C3	17.28	40.25	24°35'34"	8.77	N12°23'00"E	17.14
C4	20.48	40.25	29°08'55"	10.47	S30°24'18"E	20.26
C5	20.52	40.25	29°12'47"	10.49	S75°23'37"E	20.30
C6	14.53	9.25	90°00'00"	9.25	N45°00'00"E	13.08
C7	13.56	9.25	83°57'52"	8.32	S41°58'56"E	12.37
C8	21.06	35.25	34°14'00"	10.86	S72°53'00"W	20.75
C9	25.77	35.25	41°53'34"	13.49	S17°40'14"W	25.20
C10	27.87	40.25	39°40'01"	14.52	N21°22'42"W	27.31
C11	23.46	40.25	33°23'26"	12.07	N73°45'07"W	23.13



REVISED: 10/22/07

13th St. N. and Broadway Improvements
Broadway Paving Plans Sta. 32+00 to 37+00

Ruggles & Bohm, P.A.
 Engineering, Surveying, Land Planning

624 North Main
 Wichita, Kansas 67208
 www.rbg.com

(316) 264-8888
 (316) 264-4821 fax
 E-mail: info@rbg.com

PDC
 PDC
 Mar. 20, 2006
 QUALITY

12/07

9
 of

base narrow use

706705

9
 of