

1/2" I.P. in THIMBLE DATA

STA. 1+69.95  
N: 19997.4233  
E: 19669.9569

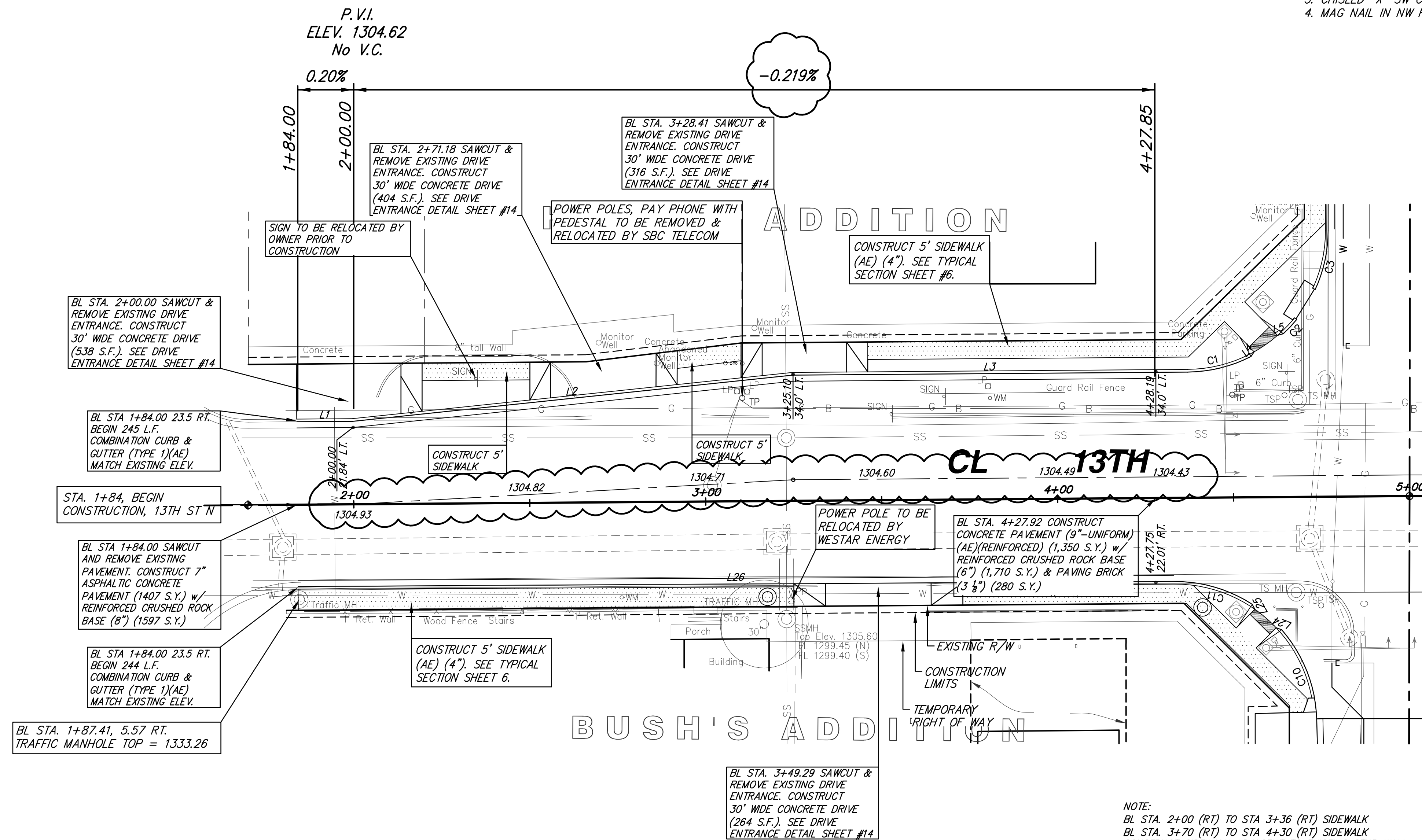
CENTERLINE P.I. DATA

STA. 3+24.91, 6.0' LT  
N: 20004.6329  
E: 19824.8710

SW COR. SEC 9, T27W, R1E

STA. 5+00.00  
N: 20000.0000  
E: 20000.0000  
1/2" IRON PIPE IN THIMBLE  
1. MAG NAIL IN NW FACE OF PP  
2. CHISLED "X" SE CURB RETURN  
3. CHISLED "X" SW CURB RETURN  
4. MAG NAIL IN NW FACE OF PP

FHWA REGION NO.	STATE	PROJECT NUMBER	FISCAL YEAR	SHEET NUMBER	TOTAL SHEETS
7	KANSAS	87N-0245-01	2007	10	55



NOTE:  
BL STA. 2+00 (RT) TO STA 3+36 (RT) SIDEWALK  
BL STA. 3+70 (RT) TO STA 4+30 (RT) SIDEWALK  
CONSTRUCT SIDEWALK ADJACENT TO EXISTING STUB WALL.

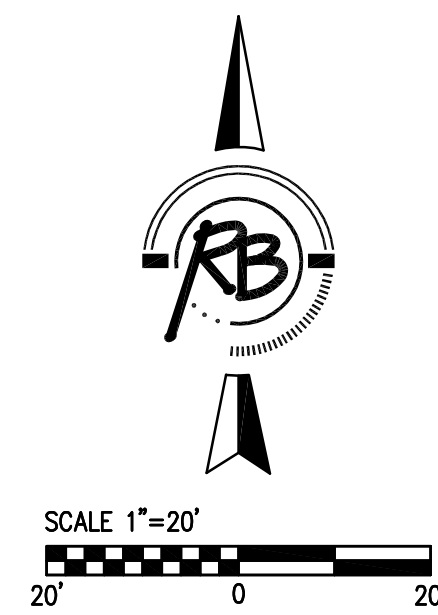
LINE	LENGTH	BEARING	START NORTHING	START EASTING	END NORTHING	END EASTING
L1	15.85	N89°37'10"E	20021.14	19683.82	20021.24	19699.68
L2	125.75	N84°00'09"E	20021.24	19699.68	20024.38	19824.74
L3	112.19	N89°33'10"E	20034.38	19824.74	20035.26	19936.93
L4	1.61	S34°03'22"W	20041.01	19955.85	20039.68	19954.95
L5	1.70	S74°08'08"W	20046.13	19964.13	20045.66	19962.49
L6	214.53	N00°05'13"E	20075.45	19976.86	20289.98	19977.19
L7	10.00	N03°27'52"E	20289.98	19977.19	20289.98	19977.79
L8	177.54	S03°36'40"E	20310.58	20310.58	20023.27	20034.45
L9	57.48	N00°05'13"E	20075.92	20034.37	20133.39	20034.45
L10	1.64	N73°13'22"W	20047.09	20047.72	20047.55	20046.14
L11	1.63	N32°25'09"W	20040.87	20054.97	20042.25	20054.10
L12	86.12	N90°00'00"W	20035.75	20160.74	20035.75	20074.62
L13	120.27	S83°57'40"E	20036.03	20192.76	20023.38	20312.36
L14	25.00	N89°36'46"E	20075.45	19976.25	20299.99	20324.99
L15	233.78	N90°00'00"W	19976.25	20300.00	19976.25	20086.24
L16	1.34	N71°04'30"E	19968.89	20045.94	19970.14	20046.41
L17	1.44	N71°04'30"E	19968.89	20038.70	19963.47	20040.06
L18	139.05	S01°32'41"E	19938.99	20031.05	19799.98	20034.80
L19	82.74	N03°33'45"E	19717.47	20029.66	19800.05	20034.80
L20	22.46	N00°17'50"E	19695.01	20029.54	19717.47	20029.66
L21	155.27	N02°59'52"W	19695.03	19984.07	19850.09	19975.95
L22	11.73	S01°32'42"E	19861.81	19975.63	19850.09	19975.95
L23	64.86	S01°32'42"E	19936.56	19973.62	19871.72	19975.37
L24	1.66	N69°07'29"W	19962.00	19963.66	19962.59	19962.11
L25	1.62	S28°27'01"E	19969.26	19955.27	19967.83	19956.04
L26	248.88	N89°40'00"E	19974.28	19684.19	19975.73	19933.07

CURVE	LENGTH	RADIUS	DELTA	TANGENT	CHORD BEARING	CHORD
C1	18.73	40.25	26°39'24"	9.54	N76°13'27"E	18.56
C2	5.59	40.25	7°57'26"	2.80	N42°54'01"E	5.59
C3	17.28	40.25	24°35'34"	8.77	N12°23'00"E	17.14
C4	20.48	40.25	29°08'55"	10.47	S30°24'18"E	20.26
C5	20.52	40.25	29°12'47"	10.49	S75°23'37"E	20.30
C6	14.53	9.25	90°00'00"	9.25	N45°00'00"E	13.08
C7	13.56	9.25	83°57'52"	8.32	S41°58'56"E	12.37
C8	21.06	35.25	34°14'00"	10.86	S72°53'00"W	20.75
C9	25.77	35.25	41°53'34"	13.49	S17°40'14"W	25.20
C10	27.87	40.25	39°40'01"	14.52	N21°22'42"W	27.31
C11	23.46	40.25	33°23'26"	12.07	N73°45'07"W	23.13

**LEGEND**

- Pavement Removal
- Sidewalk Construction (4 inch)
- Concrete Pavement (8 inch)
- Compacted Subgrade (6 inch)
- Concrete Pavement (9 inch)
- Reinforced Crushed Rock Base (6 inch)
- Paving Brick (4 inch)
- Concrete Base (9 inch)
- Reinforced Crushed Rock Base (6 inch)
- Mill Surface (2 inch)
- Overlay with BM-2, PG 70-28

- GENERAL CONSTRUCTION NOTES:**
- PROJECT BASELINE IS THE SECTION LINE COMMON TO SECTION 8, 9, 16 & 17, TOWNSHIP 27 WEST, RANGE 1 EAST OF THE SIXTH PRINCIPAL MERIDIAN. ALL CONSTRUCTION RELATED TO THE BROADWAY IMPROVEMENTS IS STATIONED OFF OF THIS PROJECT BASELINE UNLESS NOTED OTHERWISE.
  - LINE AND CURVE TABLE INFORMATION IS FOR THE FACE OF THE CURB.
  - ALL ELEVATIONS ALONG CURB & GUTTER ARE TOP OF CURB & FLOWLINE.
  - ALL POINT OF INTERSECTION INFORMATION ALONG CURB & GUTTER IS STATIONED TO THE HIGH LIP OF CURB FROM THE PROJECT BASELINE.



REVISED: 12/14/07

**13th St. N. and Broadway Improvements**  
**13th St. N. Paving Plans Sta. 1+84 to 5+00**

**Ruggles & Bohm, P.A.**  
Engineering, Surveying, Land Planning

924 North Main  
Wichita, Kansas 67203  
www.rbkansas.com

(316) 264-8008  
(316) 264-4621 fax  
E-mail: info@rbkansas.com

DESIGN: PDC  
DRAWN: PDC  
REVIEW: Mar. 20, 2006  
UTILITY: OF

DATE: Sept. 15, 2004

SHEET: 10 OF 55

DRAWING FILE: base narrow use .... PROJECT NUMBER: DATE: Sept. 15, 2004