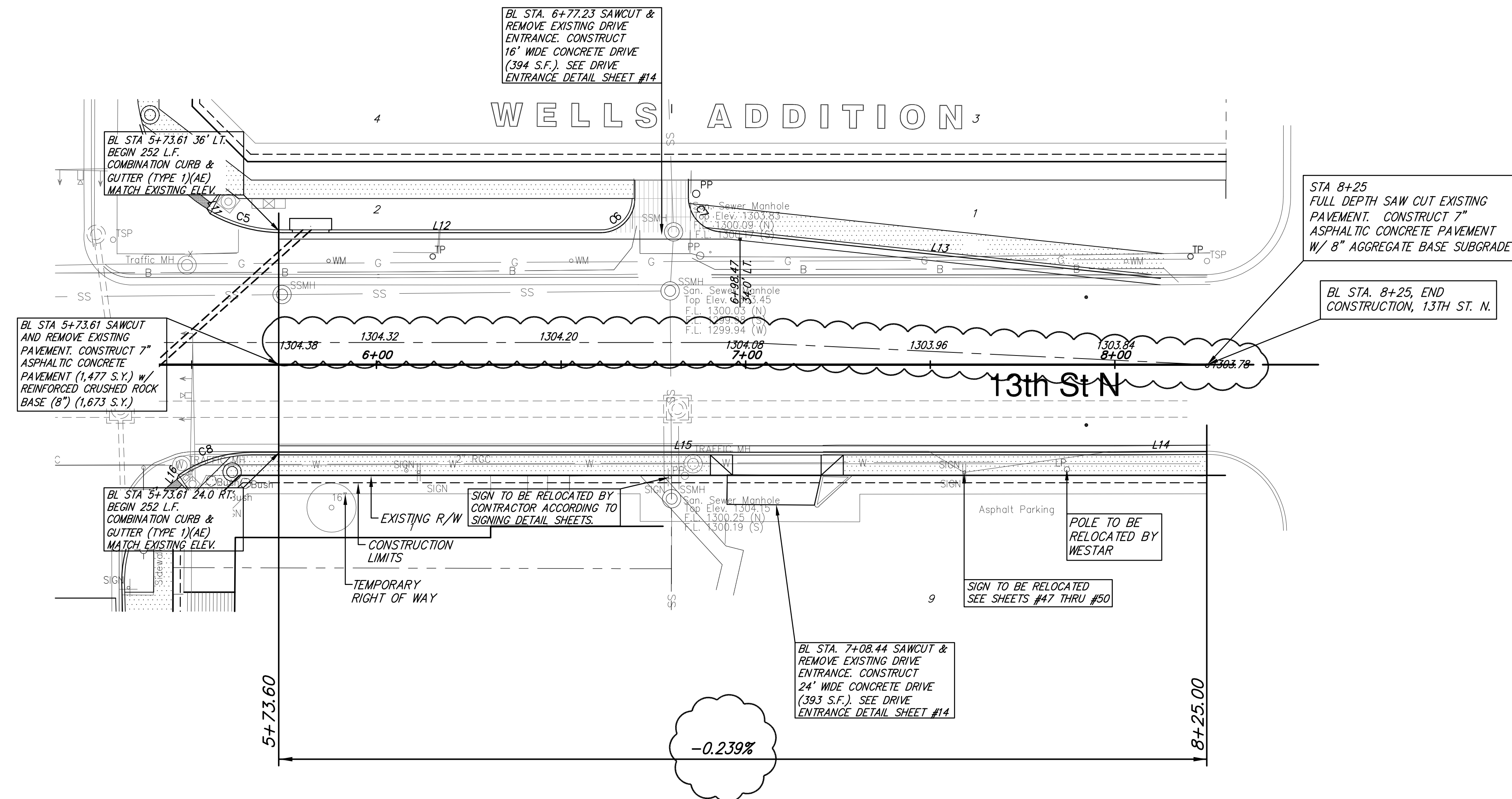


FHWA REGION NO.	STATE	PROJECT NUMBER	FISCAL YEAR	SHEET NUMBER	TOTAL SHEETS
7	KANSAS	87N-0245-01	2007	11	55

CENTERLINE P.I. DATA
 STA. 7+00.00, 6.0' LT
 N: 20006.0000
 E: 20200.0000

CENTERLINE P.I. DATA
 STA. 8+25.00
 N: 19999.9490
 E: 20326.3991



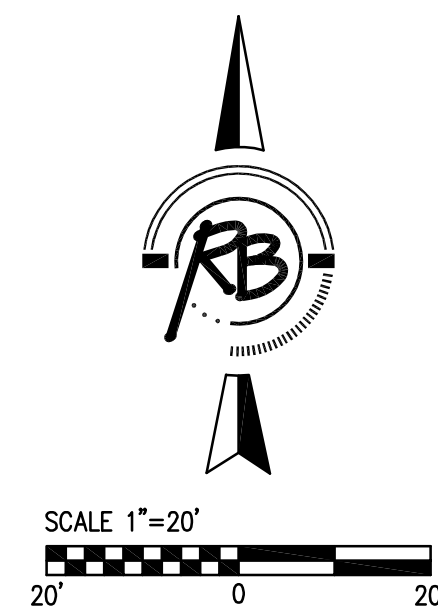
LINE	LENGTH	BEARING	START NORTING	START EASTING	END NORTING	END EASTING
L1	15.85	N89°37'10"E	20021.14	19683.82	20021.24	19699.68
L2	125.75	N84°00'09"E	20021.24	19699.68	20034.38	19824.74
L3	112.19	N89°33'10"E	20034.38	19824.74	20035.26	19936.93
L4	1.61	S34°03'22"W	20041.01	19955.85	20039.68	19954.95
L5	1.70	S74°08'08"W	20046.13	19964.13	20045.66	19962.49
L6	214.53	N00°05'13"E	20075.45	19976.86	20289.98	19977.19
L7	10.00	N03°27'52"E	20289.98	19977.19	20289.96	19977.79
L8	177.54	S03°36'40"E	20310.58	20023.27	20133.39	20034.45
L9	57.48	N00°05'13"E	20075.92	20034.37	20133.39	20034.45
L10	1.64	N73°13'22"W	20047.09	20047.72	20047.55	20046.14
L11	1.63	N32°25'09"W	20040.87	20054.97	20042.25	20054.10
L12	86.12	N90°00'00"W	20035.75	20160.74	20035.75	20074.62
L13	120.27	S83°57'40"E	20036.03	20192.76	20023.38	20312.36
L14	25.00	N89°36'46"E	19976.25	20299.99	19976.42	20324.99
L15	233.78	N90°00'00"W	19976.25	20300.00	19976.25	20066.24
L16	1.34	N71°04'30"E	19968.89	20045.94	19970.14	20046.41
L17	1.44	N11°04'30"E	19963.00	20038.70	19963.47	20040.06
L18	139.05	S01°32'41"E	19938.99	20031.05	19799.98	20034.80
L19	82.74	N03°33'45"E	19717.47	20029.66	19800.05	20034.80
L20	22.46	N00°17'50"E	19695.01	20029.54	19717.47	20029.66
L21	155.27	N02°59'52"W	19695.03	19984.07	19850.09	19975.95
L22	11.73	S01°32'42"E	19861.81	19975.63	19850.09	19975.95
L23	64.86	S01°32'42"E	19936.56	19973.62	19871.72	19975.37
L24	1.66	N69°07'29"W	19962.00	19963.66	19962.59	19962.11
L25	1.62	S28°27'01"E	19969.26	19955.27	19967.83	19956.04
L26	248.88	N89°40'00"E	19974.28	19684.19	19975.73	19933.07

CURVE	LENGTH	RADIUS	DELTA	TANGENT	CHORD BEARING	CHORD
C1	18.73	40.25	26°39'24"	9.54	N76°13'27"E	18.56
C2	5.59	40.25	7°57'26"	2.80	N42°54'01"E	5.59
C3	17.28	40.25	24°35'34"	8.77	N12°23'00"E	17.14
C4	20.48	40.25	29°08'55"	10.47	S30°24'18"E	20.26
C5	20.52	40.25	29°12'47"	10.49	S75°23'37"E	20.30
C6	14.53	9.25	90°00'00"	9.25	N45°00'00"E	13.08
C7	13.56	9.25	83°57'52"	8.32	S41°58'56"E	12.37
C8	21.06	35.25	34°14'00"	10.86	S72°53'00"W	20.75
C9	25.77	35.25	41°53'34"	13.49	S17°40'14"W	25.20
C10	27.87	40.25	39°40'01"	14.52	N21°22'42"W	27.31
C11	23.46	40.25	33°23'26"	12.07	N73°45'07"W	23.13

LEGEND

	Pavement Removal
	Sidewalk Construction (4 inch)
	Concrete Pavement (8 inch)
	Compacted Subgrade (6 inch)
	Concrete Pavement (9 inch)
	Reinforced Crushed Rock Base (6 inch)
	Paving Brick (4 inch)
	Concrete Base (9 inch)
	Reinforced Crushed Rock Base (6 inch)
	Mill Surface (2 inch)
	Overlay with BM-2, (PG 70-28)

- GENERAL CONSTRUCTION NOTES:**
- PROJECT BASELINE IS THE SECTION LINE COMMON TO SECTION 8, 9, 16 & 17, TOWNSHIP 27 WEST, RANGE 1 EAST OF THE SIXTH PRINCIPAL MERIDIAN. ALL CONSTRUCTION RELATED TO THE BROADWAY IMPROVEMENTS IS STATIONED OFF OF THIS PROJECT BASELINE UNLESS NOTED OTHERWISE.
 - LINE AND CURVE TABLE INFORMATION IS FOR THE FACE OF THE CURB.
 - ALL ELEVATIONS ALONG CURB & GUTTER ARE TOP OF CURB & FLOWLINE.
 - ALL POINT OF INTERSECTION INFORMATION ALONG CURB & GUTTER IS STATIONED TO THE HIGH LIP OF CURB FROM THE PROJECT BASELINE.



REVISED: 12/14/07

13th St. N. and Broadway Improvements
13th St. N. Paving Plans Sta. 5+00 to 8+75

Ruggles & Bohm, P.A.
 Engineering, Surveying, Land Planning

924 North Main
 Wichita, Kansas 67203
 www.rbkansas.com

(316) 264-8008
 (316) 264-4621 fax
 E-mail: info@rbkansas.com

DESIGN PDC
 DRAWN PDC
 REVIEW Mar. 20, 2006
 UTILITY 11
 OF SHEET 55

DRAWING FILE: base narrow use... PROJECT NUMBER: DATE: Sept. 24, 2004